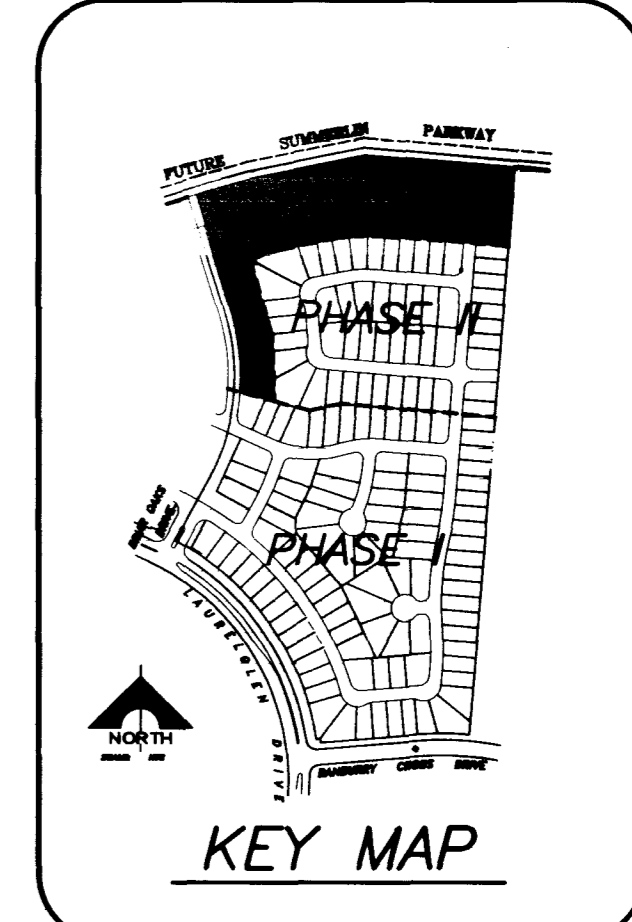


Call before you Dig.
1-800-227-2600
UNDERGROUND SERVICE (USA)



SEE COLEMAN HOMES OAK HILLS AT SUMMERLIN - PHASE II. ON FILE AT THE CITY OF LAS VEGAS FILE NO. 107Y-4506-2

EXISTING SANITARY SEWER IMPROVEMENTS
SEE CYPRESS POINT - PHASE I
PER CARTER BURGESS ENGINEERING
ON FILE AT THE CITY OF LAS VEGAS,
FILE NO. 107Y-4514-1

RESIDENTIAL SEWER BACKWATER VALVE TABLE	
CLARK COUNTY SANITATION DISTRICT DRAWING NO.	
LOT NUMBER	
103-115	
118-120	
122,123	
177-179	
181-184	
186-194	

***EXISTING SERVICE (8 - 3/4" WATER METER)**
IF ANY OF THE EXISTING SERVICES ARE INCORRECTLY LOCATED OR NOT USED FOR ANY REASON, THE DEVELOPER SHALL ABANDON THE LATERALS AT THE CONNECTION TO THE ACTIVE MAIN IN ACCORDANCE WITH THE UDACS AND AT THE DEVELOPER'S EXPENSE.
LOTS 100-107 BLOCK 4

NOTES

THIS PROPERTY MAY HAVE STATIC WATER PRESSURE IN EXCESS OF 80 PSI. THE UNIFORM PLUMBING CODE REQUIRES THAT INDIVIDUAL, ON-SITE (PRIVATE), PRESSURE REDUCING VALVES BE INSTALLED WHENEVER THE PRESSURE EXCEEDS 80PSI. PRVS ARE THE DEVELOPER'S RESPONSIBILITY AND WILL NOT BE INSPECTED OR INCLUDED IN THE ACCEPTANCE OF LVWD FACILITIES.

BENCHMARK

ID. #	DESC.	NGVD 29	NAVD 88	SUMMERLIN DATUM
1954	OLVOD RIVET & PLATE IN TOP OF CURB NW SIDE OF TOWN CENTER DRIVE & SOUTH CIRCLE ISLAND.	2725.923	2728.37 (831.6074 M)	2726.19

SUMMERLIN DATUM USED FOR THIS PROJECT

FIRE FLOW CALCULATIONS

FIRE FLOW REQUIREMENT IS 1500 GALLONS PER MINUTE AT 20 PSI RESIDUAL PRESSURE.

Based on:

- SQUARE FOOTAGE: 1680 square feet
- LARGEST AREA BETWEEN 4-HOUR AREA SEPARATION WALLS: N/A square feet
- BUILDING HEIGHT: 27 feet
- NUMBER OF STORIES: 2
- TYPE OF CONSTRUCTION: FRAME/STUCCO
- OCCUPANCY: RESIDENTIAL
- FULL AUTOMATIC FIRE SPRINKLER SYSTEM: NONE

Reviewed By: *[Signature]*
Date: 1,25,99

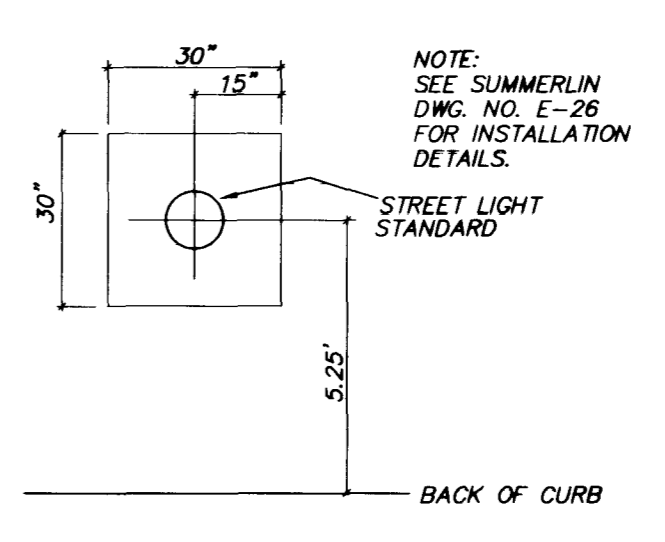
NOTE:
ALL SEWER MAINS SHOWN ON THIS SHEET ARE EXIST. PUBLIC SEWER MAINS.
10' MIN. SEPARATION REQUIRED FROM EXIST. 8" SEWER TO PROPOSED 8" WATER.

SEWAGE CONTRIBUTION

45 RESIDENTIAL UNITS x 250 G.P.D. = 11,250 G.P.D.
AVG. PEAKING FACTOR = 3.4 (FROM TABLE C, PG. T-3)
PEAK FLOW 11,250 x 3.4 = 44,250 g.p.d.

WATER QUANTITIES

- 1 STD. FIRE HYDRANT ASSEMBLY 2 EA.
- 2 1" SERVICE W/METER BOX (UDACS PLATE 1B) 37 EA.
- 3 3/4" METER FROM L.V.V.W.D. 37 EA.
- 4 6" PVC 851 L.F.
- 5 6" GATE VALVE 2 EA.
- 6 6"x6"x6" TEE 1 EA.
- 7 6" 45" BEND 2 EA.
- 8 8"x6" REDUCER 1 EA.
- 9 EXIST. 3/4" WATER METER 8 EA.



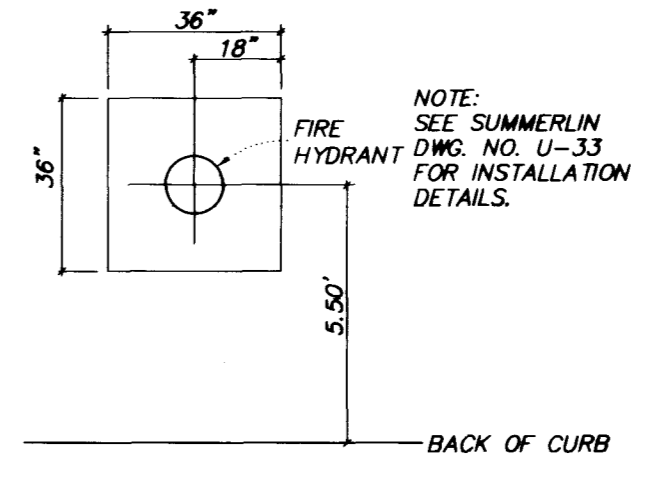
STREET LIGHT LOCATION DETAIL

BASIS OF BEARING

NORTH 15°23'46" EAST, BEING THE BEARING OF THE CENTERLINE OF ANASAZI DRIVE AS SHOWN BY MAP THEREOF ON FILE IN BOOK 63, PAGE 92 OF PLATS IN THE CLARK COUNTY NEVADA RECORDERS OFFICE.

CONSTRUCTION NOTES

- CONSTRUCTION SURVEY:
GRADES ARE GIVEN FROM TOP OF STAKES OR NAILS. THE CONTRACTORS ARE CAUTIONED TO OBSERVE THE FOLLOWING RULES IN USING THE GRADE STAKES GIVEN BY THIS OFFICE. THREE (3) CONSECUTIVE POINTS THAT ARE SHOWN TO BE ON THE SAME LINE OF SLOPE MUST BE USED IN COMMON IN ORDER THAT ANY VARIATION OUT OF A PERFECT STRAIGHT GRADE MAY BE DETECTED IN CASE ANY SUCH DISCREPANCY IS FOUND, THE SAME MUST BE REPORTED. OTHERWISE THIS OFFICE WILL NOT BE RESPONSIBLE FOR ANY ERROR IN THE GRADE OF THE FINISHED WORK.
- THESE PLANS SHALL BE ON THE JOB SITE AT ALL TIMES.



FIRE HYDRANT LOCATION DETAIL

APPROVED FOR CONSTRUCTION

[Signature] 1-28-99
LAS VEGAS VALLEY WATER DISTRICT DATE

COLEMAN HOMES

G. C. WALLACE, INC.
Engineering/Architecture
1555 SOUTH RAINBOW BLVD./LAS VEGAS, NEVADA 89102
(702) 363-1200

UTILITY PLAN

OAK HILLS AT SUMMERLIN - PHASE III

SHEET TITLE

DRAWN BY: GCW 05/15/98

DESIGNED BY: GCW

CHECKED BY:

PROJECT NO.: 743.162

SCALE: 1" = 40' HOR. N/A VERT.

SEAL

THOMAS R. DYSON
REGISTERED PROFESSIONAL ENGINEER - STATE OF NEVADA
No. 11306

SHEET C-5

5 OF 13 SHEETS

DRAWING NO. 307Y-4506-3

LOCATION OF NEAREST SANITARY SEWER 12" OR LARGER

