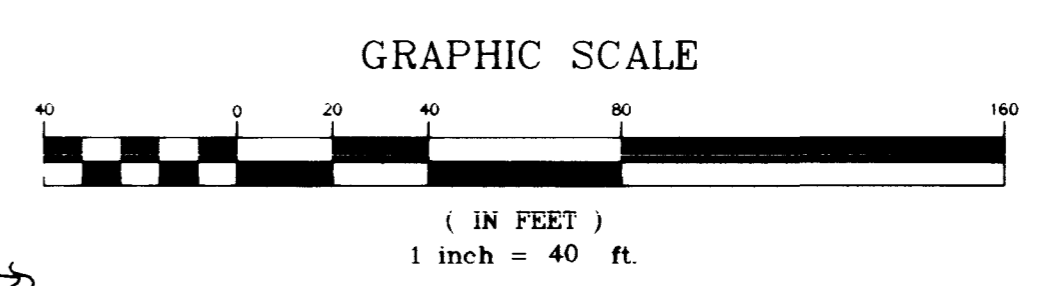
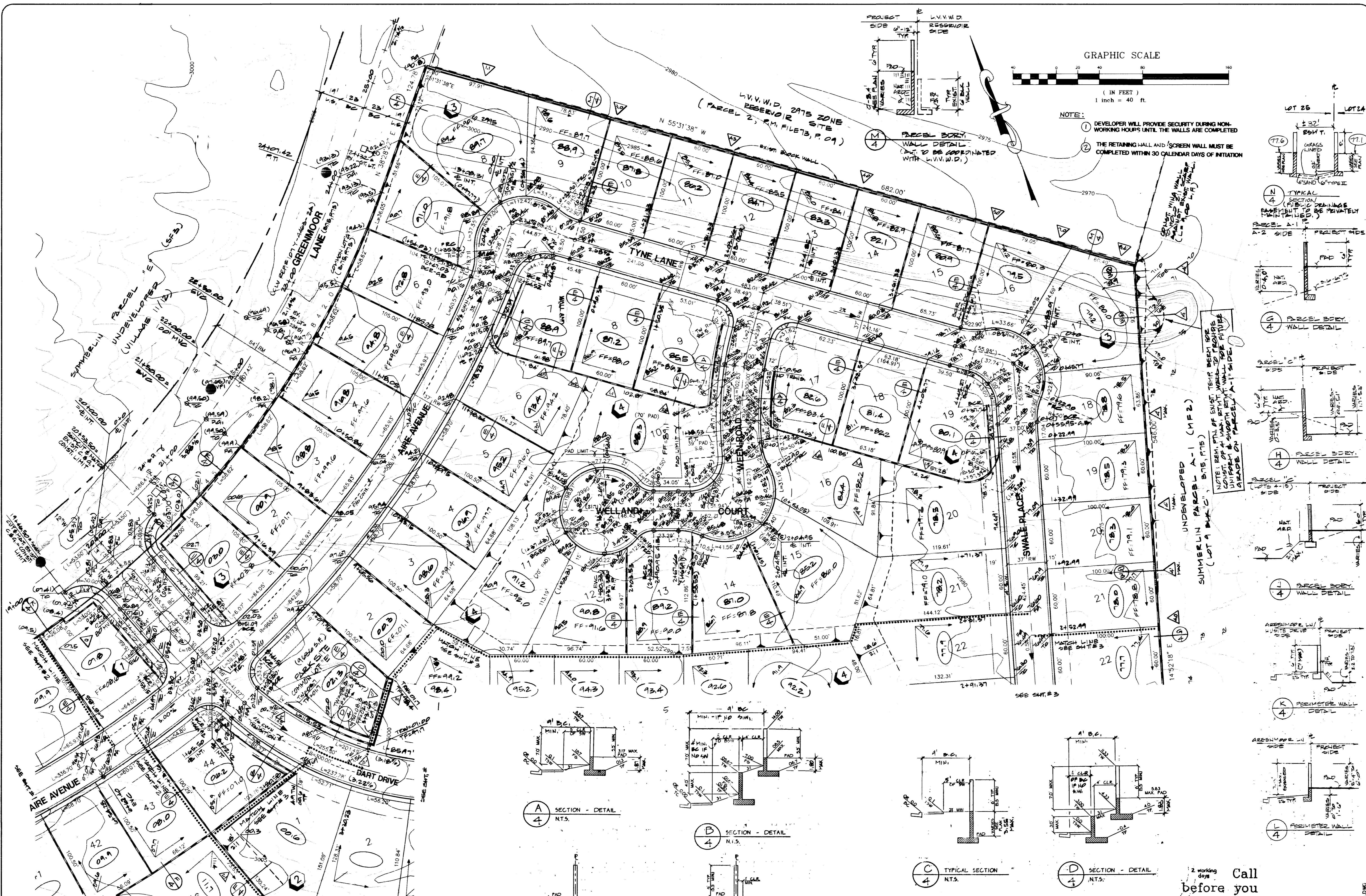
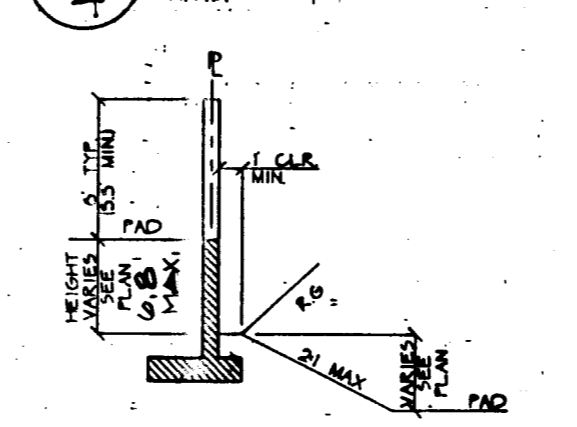
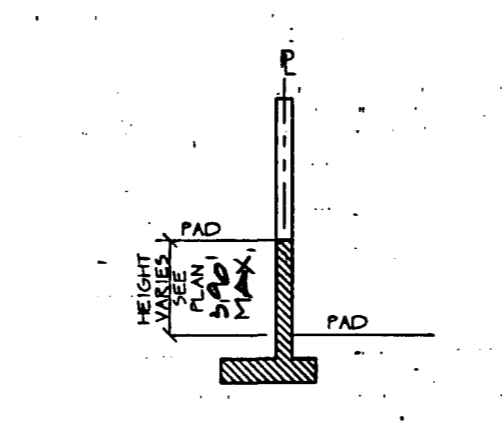
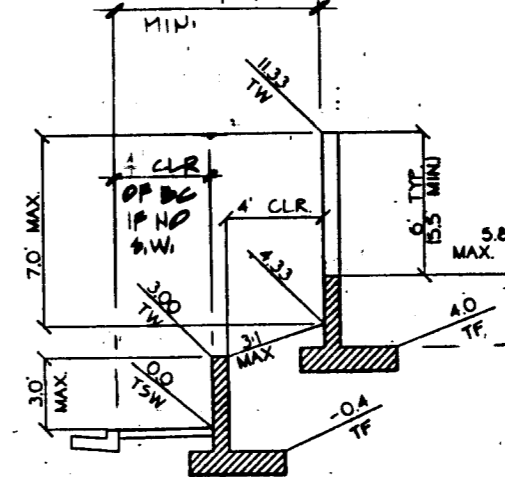
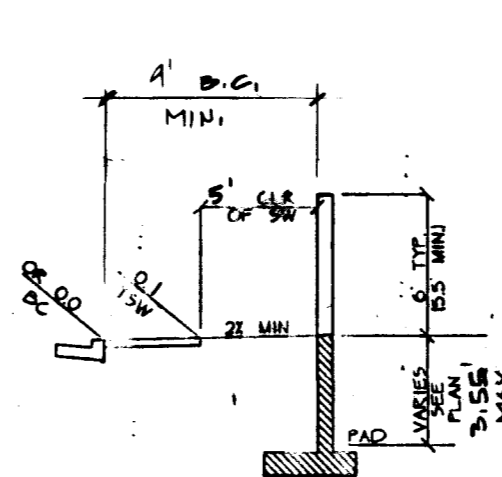
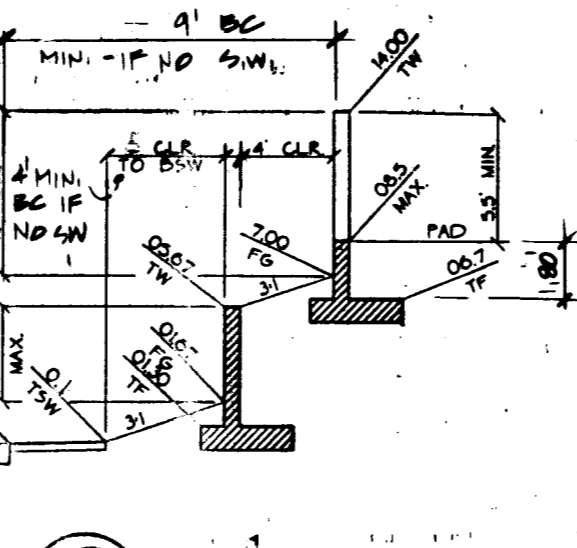
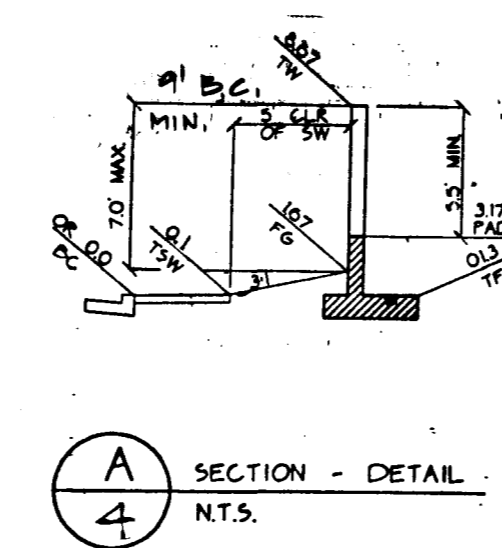
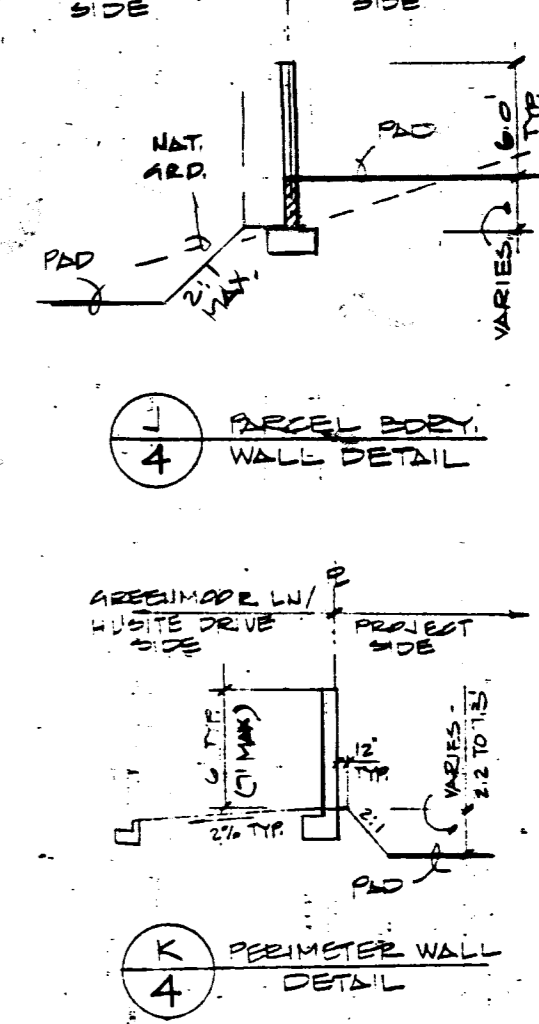
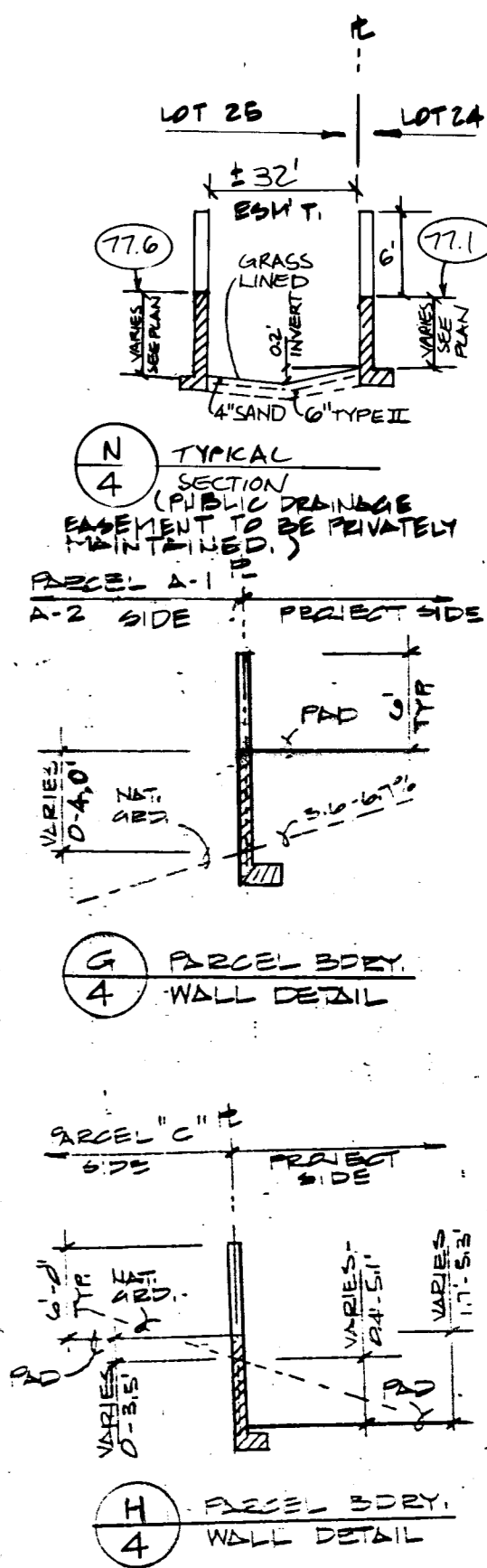


H:\CAD\LAND\570\5070\LANDC MHD SEP 04 08:17:18 1996 PLOTTED BY: JEM



NOTE: 1 DEVELOPER WILL PROVIDE SECURITY DURING NON-WORKING HOURS UNTIL THE WALLS ARE COMPLETED. 2 THE RETAINING WALL AND SCREEN WALL MUST BE COMPLETED WITHIN 30 CALENDAR DAYS OF INITIATION.



Call before you Dig 1-800-247-2600

I CERTIFY THAT THIS GRADING PLAN IS IN CONFORMANCE WITH THE APPROVED DRAINAGE STUDY ON FILE AT THE CITY OF LAS VEGAS FOR THIS PROJECT.

BENCHMARK CONTROL POINT "SPANKY" - A BRASS CAP SET IN CONCRETE STAMPED "#42". SET BY G.C. WALLACE ENGINEERING AND USED AS A BENCHMARK FOR SUMMERLIN CONSTRUCTION.

ELEVATION = 2825.38 (SUMMERLIN DATUM) = PROJECT DATUM. ELEVATION EQUATION: SUMMERLIN ELEV. - 0.217 = NAVD'29 ELEV. ELEVATION EQUATION: NAVD'29 ELEV. + 2.437 = NAVD'88 ELEV.

APPROVED FOR CONSTRUCTION

Signature and date: 2/24/97

LYING WITHIN SECTION 25, TOWNSHIP 20 SOUTH, RANGE 59 EAST AND IN SECTION 30, TOWNSHIP 20 SOUTH, RANGE 60 EAST, M.D.M., CITY OF LAS VEGAS, NEVADA.

KAUFMAN & BROAD CITY OF LAS VEGAS, NEVADA CONSULTING ENGINEERS • PLANNERS • LAND SURVEYORS 2727 SOUTH RAINBOW BOULEVARD LAS VEGAS, NEVADA 89102-5148 PHONE (702) 873-7550 FAX (702) 362-2597

GRADING PLAN OAK KNOLL SUMMERLIN VILLAGE 11/12

SEAL, SIGNATURE, DATE SEP 96, SHEET 4 OF 26 SHEETS

1074-4509

