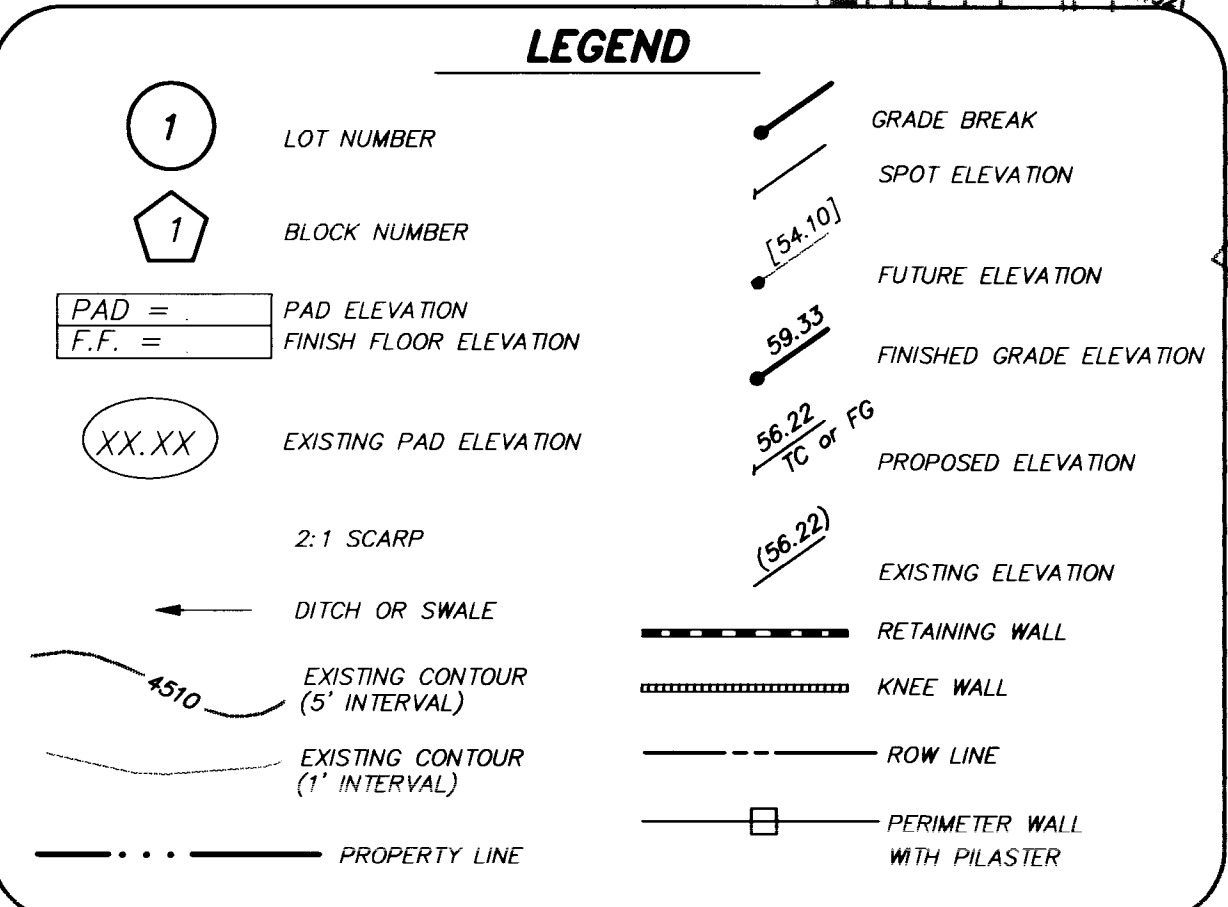


- WALL NOTES:**
1. APPROVAL OF THESE PLANS BY THE CITY ENGINEER DOES NOT PERTAIN TO CONSTRUCTION OF NEW WALLS (RETAINING OR NON-RETAINING) OR MODIFICATIONS TO EXISTING WALLS.
  2. ALL WALLS, NEW OR EXISTING, ARE REVIEWED BY THE CITY ENGINEER FOR GRADING RELATIONSHIPS ONLY.
  3. ALL WALLS, RETAINING AND NON-RETAINING, MUST BE APPROVED AND A PERMIT OBTAINED FROM THE DEPARTMENT OF BUILDING AND SAFETY.
  4. FOR SIGHT DISTANCE REQUIREMENTS AT INTERSECTIONS SEE SUMMERLIN STD. DWG. NO. DC-3.

- NOTES:**
1. FINISH FLOOR ELEVATIONS SHOWN ARE A MINIMUM ELEVATION.
  2. DIMENSIONS SHOWN ON THIS PLAN ARE FOR INFORMATION ONLY AND SHALL NOT BE USED AS A SALES TOOL BY SALES PERSONNEL OR PROSPECTIVE PURCHASERS.
  3. REFER TO FINAL RECORDED MAP FOR ALL LOT DIMENSIONS.



**BENCHMARK**

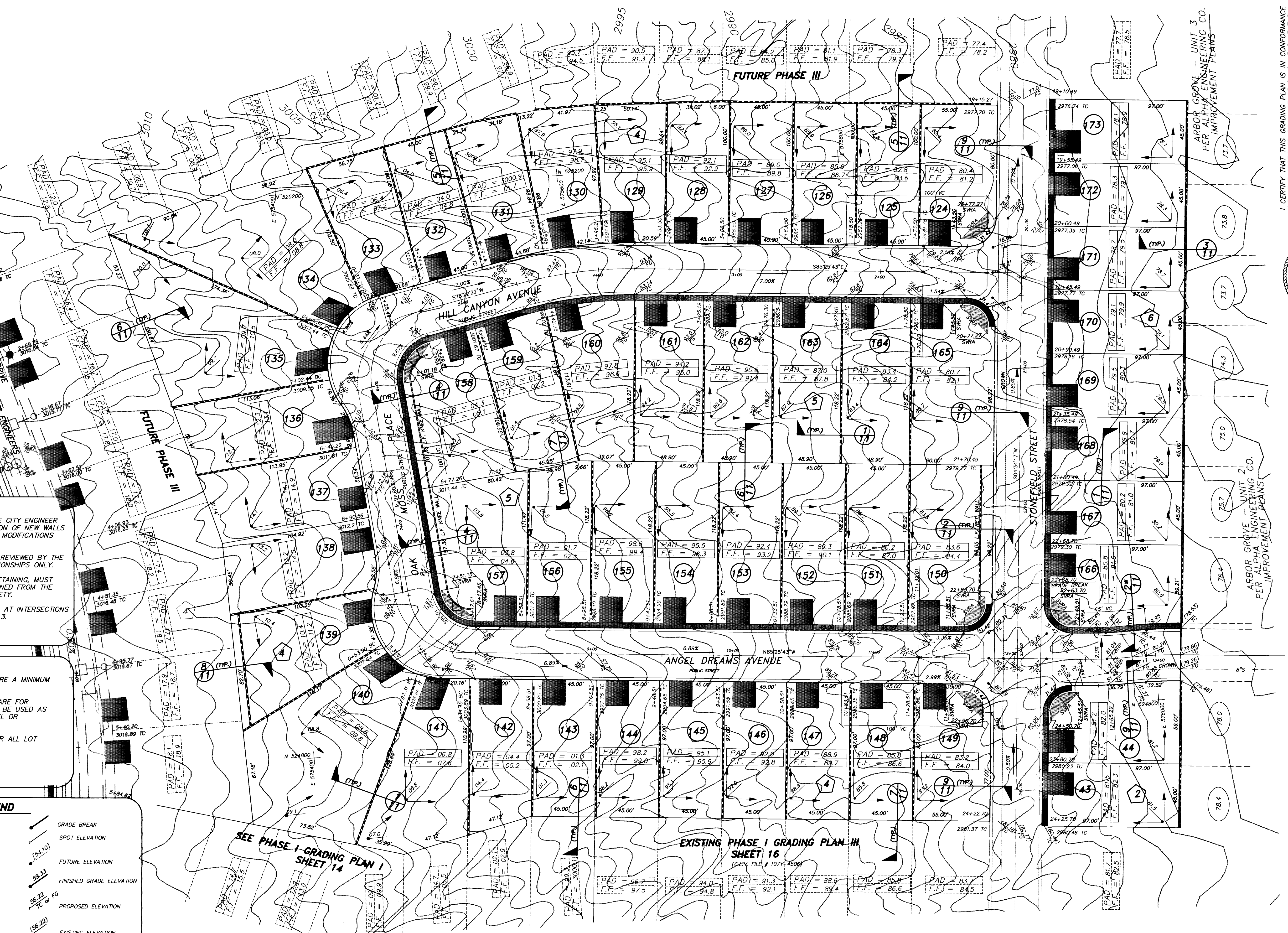
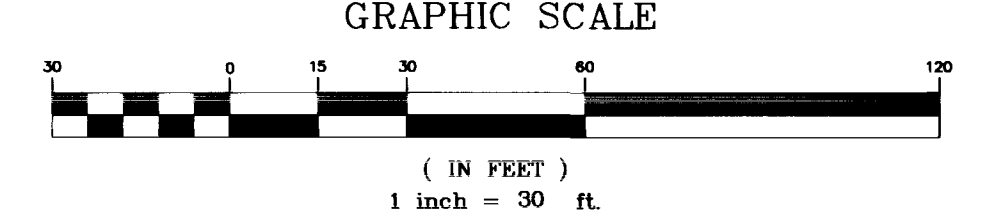
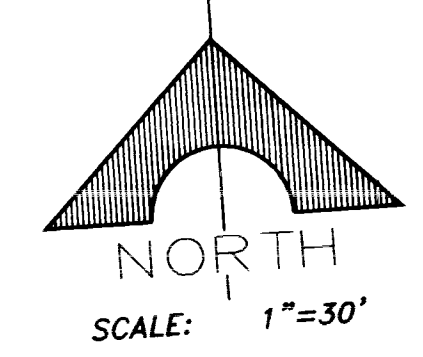
ID #	DESC.	NOVD 20	NOVD 08	SUMMERLIN DATUM
01000	SPOT & PLATE IN TOP OF CURB NW SIDE OF TRAIL OVER DRIVE & SOUTH SIDE OF DRIVE	2726.823	2726.57	2726.19
		(831.8074 M)		

SUMMERLIN DATUM USED FOR THIS PROJECT

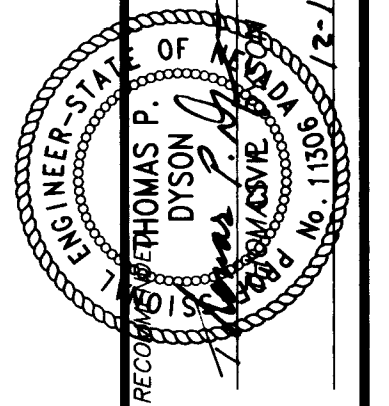
**BASIS OF BEARING**

NORTH 152°34'6" EAST, BEING THE BEARING OF THE CENTERLINE OF ANAKAP DRIVE AS SHOWN & ADJ. THEREOF ON FILE IN BOOK 63 PAGE 92 OF PLATS IN THE CLARK COUNTY NEVADA RECORDED OFFICE.

SVRA SIGHT VISIBILITY RESTRICTION AREA (NO VIEW OBSTRUCTION OVER 30' ABOVE TOP OF CURB ALLOWED IN THE SVRA)



I CERTIFY THAT THIS GRADING PLAN IS IN CONFORMANCE WITH THE APPROVED DRAINAGE STUDY ON FILE AT THE CITY OF LAS VEGAS FOR THIS PROJECT.



**G.C. WALLACE, INC.**  
Engineering/Architecture  
1555 SOUTH RAINBOW BLVD., LAS VEGAS, NEVADA 89102

**COLEMAN HOMES**  
OAK HILLS AT SUMMERLIN—PHASE II  
GRADING PLAN

