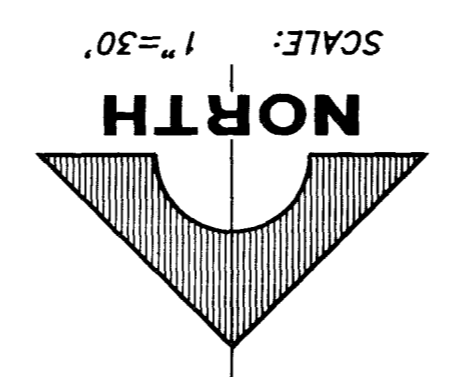


HILL CANYON AVENUE  
(PUBLIC STREET)



MH COORDINATES

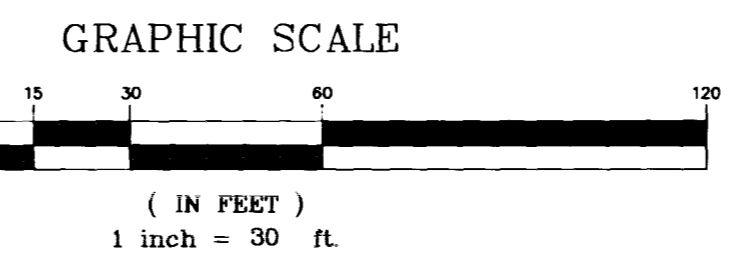
MH#	NORTHING	EASTING
4	525139.4327	575608.0335

SIDEWALK RAMP

RAMP	"A"	"B"	SLOPE
1	8.0'	8.0'	-1.05%

CURVE TABLE

CURVE	DELTA	RADIUS	LENGTH	TANGENT
C1	90°00'00"	20.00'	31.42'	20.00'
C2	16°11'55"	281.50'	79.59'	40.06'
C3	16°11'55"	300.00'	84.82'	42.69'
C4	16°11'55"	318.50'	90.05'	45.33'
C5	04°14'09"	318.50'	23.55'	11.78'
C6	07°34'53"	318.50'	42.14'	21.10'
C7	04°22'53"	318.50'	24.36'	12.18'
C8	13°18'50"	281.59'	65.43'	32.87'
C9	02°50'44"	284.95'	14.15'	7.08'



**BASIS OF BEARING**

NORTH 152°46' EAST, BEING THE BEARING OF THE CENTERLINE OF ANASAS DRIVE AS SHOWN BY MAP THEREOF ON FILE IN BOOK 63, PAGE 82 OF PLATS IN THE CLARK COUNTY NEVADA RECORDS OFFICE.

**CALL BEFORE YOU DIG OVERHEAD**

1-702-593-6111

**BENCHMARK**

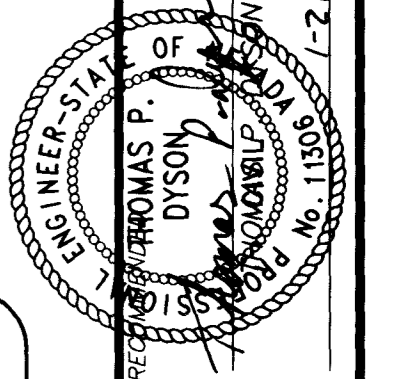
BL. #	DESC.	NOV. 29	NOV. 08	SUMMERLIN DATA
1851	BLVD MARK & PLATE IN TOP OF CURB NW CORNER OF TOWN CENTER DRIVE & SOUTH ORACLE ISLAND.	2728.823	2728.37	2728.18 (831.8074 M)

SUMMERLIN DATA USED FOR THIS PROJECT

**Call before you Dig**

1-800-227-2600

UNDERGROUND SERVICE (USA)

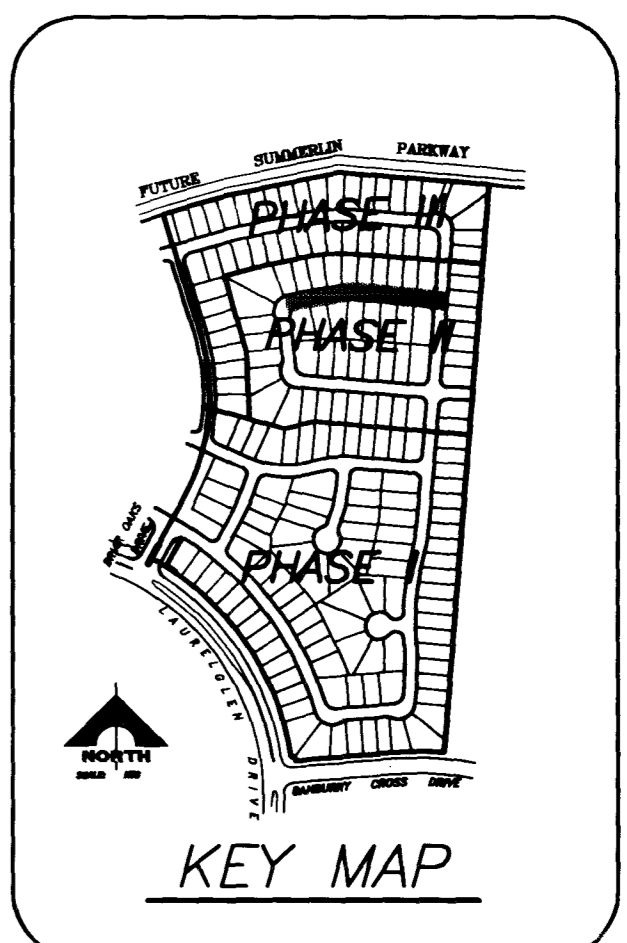
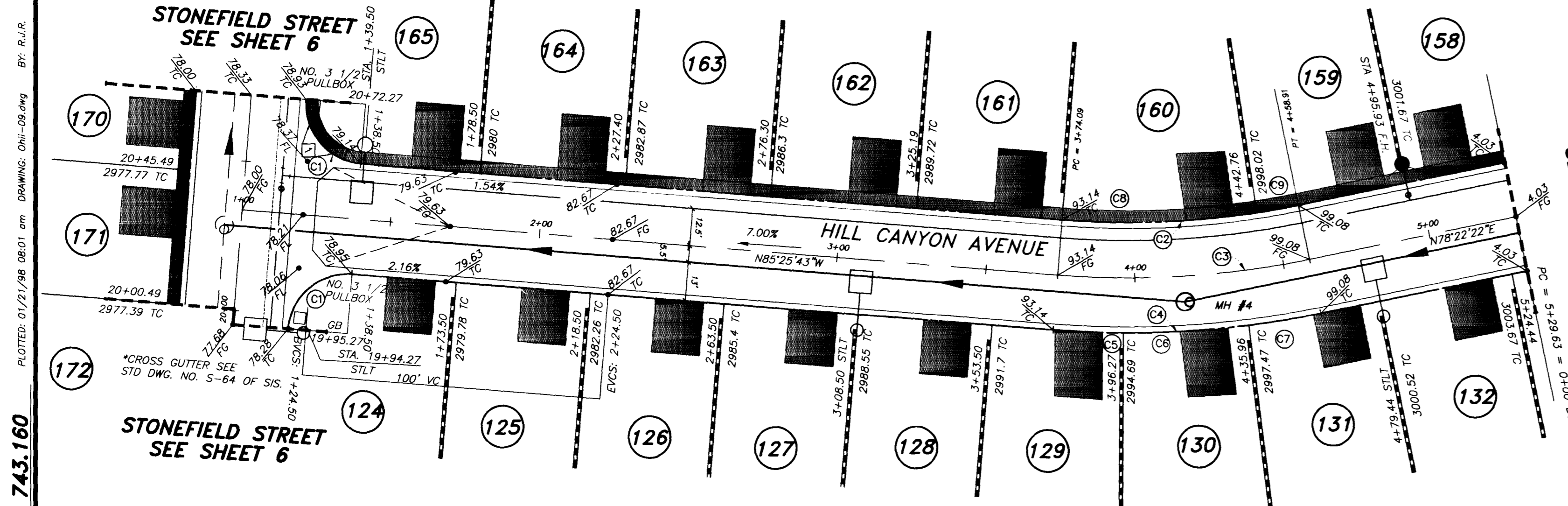


- SEE APPROPRIATE VILLAGE DESIGN CRITERIA FOR LANDSCAPE TREATMENT AND WIDTH.
- SEE GENERAL NOTES ON STD. DWG. S-1 OF SIS.
- MINIMUM FLOWLINE TO FLOWLINE DIMENSION SHALL BE 36 FEET.
- SEE STD. DWG. U-5 OF SIS FOR LOCATION OF UTILITIES.
- SIDEWALK OR WALKWAY MAY MEANDER PROVIDING A 3" MINIMUM SEPARATION IS MAINTAINED BETWEEN THE WALKWAY OR SIDEWALK AND THE CURB. THIS AREA SHALL BE DESIGNATED AS A "PUBLIC SIDEWALK EASEMENT" ON THE FINAL MAP.
- NO FIRE HYDRANT OR STREET LIGHT SHALL BE LOCATED WITHIN THE SIDEWALK OR WALKWAY.
- NATVE MAY BE USED IN LIEU OF TYPE I WITH CIVIL CONSTRUCTION SERVICES APPROVAL.

**RESIDENTIAL STREET**  
(PUBLIC STREET)

- SEE APPROPRIATE VILLAGE DESIGN CRITERIA FOR LANDSCAPE TREATMENT AND WIDTH.
- SEE GENERAL NOTES ON STD. DWG. S-1 OF SIS.
- MINIMUM FLOWLINE TO FLOWLINE DIMENSION SHALL BE 36 FEET.
- SEE STD. DWG. U-5 OF SIS FOR LOCATION OF UTILITIES.
- SIDEWALK OR WALKWAY MAY MEANDER PROVIDING A 3" MINIMUM SEPARATION IS MAINTAINED BETWEEN THE WALKWAY OR SIDEWALK AND THE CURB. THIS AREA SHALL BE DESIGNATED AS A "PUBLIC SIDEWALK EASEMENT" ON THE FINAL MAP.
- NO FIRE HYDRANT OR STREET LIGHT SHALL BE LOCATED WITHIN THE SIDEWALK OR WALKWAY.
- NATVE MAY BE USED IN LIEU OF TYPE I WITH CIVIL CONSTRUCTION SERVICES APPROVAL.

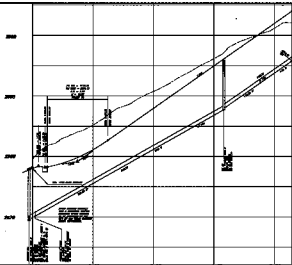
**RESIDENTIAL STREET OFF-SET CROWN**  
(PUBLIC STREET)



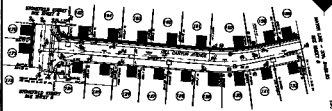
JOB NO. 743.160

6111

1074-4506-2



HILL CANYON AVENUE



KEY ORGANIZATION

1	2	3	4	5	6	7	8	9	10
11	12	13	14	15	16	17	18	19	20

ADDRESS MAP

1	2	3	4	5	6	7	8	9	10
11	12	13	14	15	16	17	18	19	20

STREET INDEX

1	2	3	4	5	6	7	8	9	10
11	12	13	14	15	16	17	18	19	20



NAME OF READER

**DEWOLF**



ADDRESS MAP

1	2	3	4	5	6	7	8	9	10
11	12	13	14	15	16	17	18	19	20

