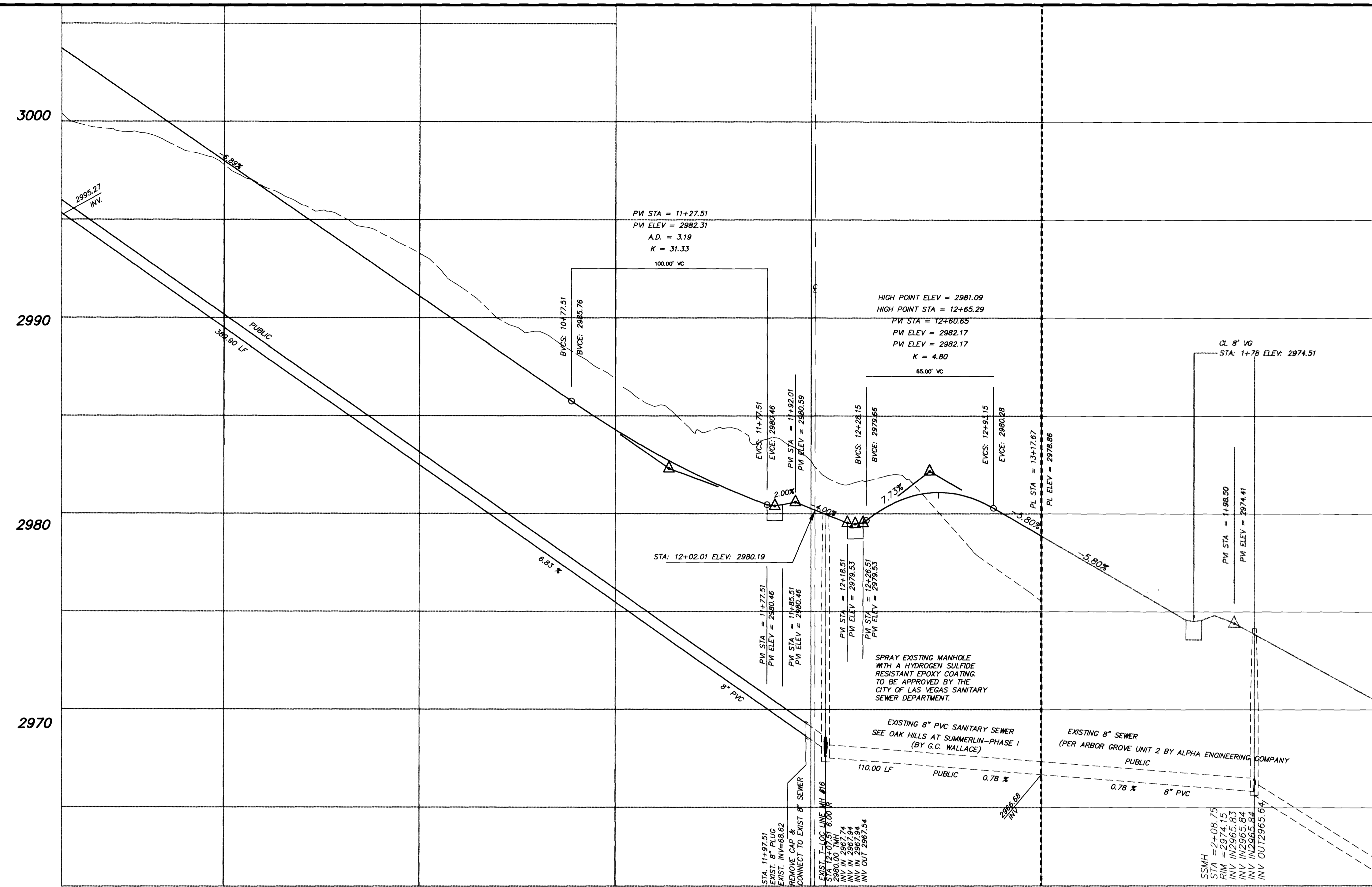


JOB NO. 743.160 PLOTTED: 01/21/20 07:59 am DRAWING: 01-17-61.dwg BY: R.R.



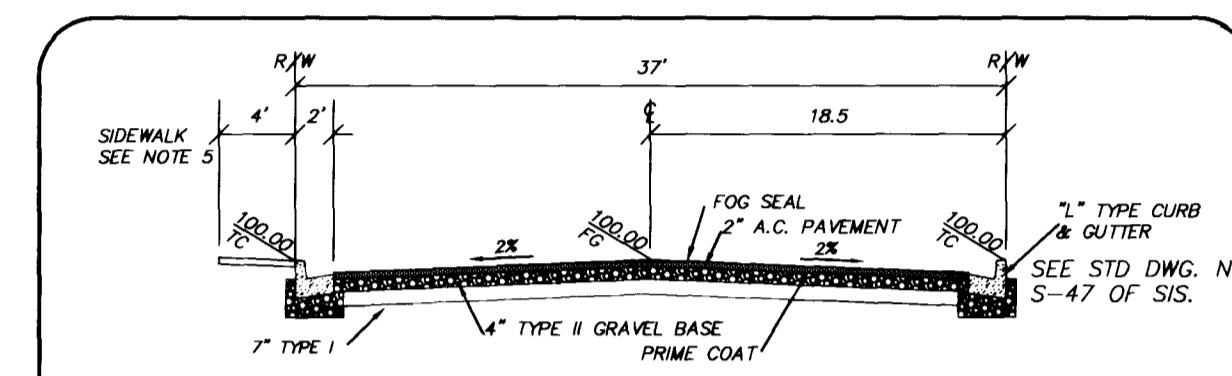
BASIS OF BEARING
 NORTH 152°34' EAST, BEING THE BEARING OF THE CENTERLINE OF ANASAZI DRIVE AS SHOWN BY MAP THEREON ON FILE IN BOOK 63, PAGE 92 OF PLATS IN THE CLARK COUNTY NEVADA RECORDERS OFFICE.



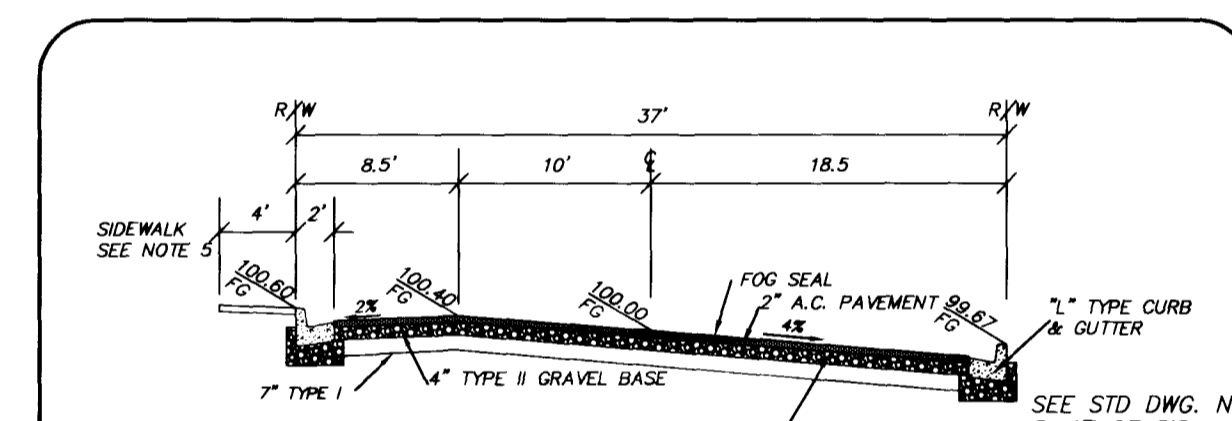
BENCHMARK

ID #	DESC	MOND 29	NOV 08	MARKER DATUM
01	CL 1000 PILE & PLATE IN TOP OF CURB NW SIDE 1554 OF TONY GUSTER DRIVE & SOUTH CIRCLE ISLAND	2726.923	2726.37	2726.19

MARKER DATUM USED FOR THIS PROJECT



- SEE APPROPRIATE VILLAGE DESIGN CRITERIA FOR LANDSCAPE TREATMENT AND MOTH.
- SEE GENERAL NOTES ON STD. DWG. S-1 OF SIS.
- MINIMUM FLOWLINE TO FLOWLINE DIMENSION SHALL BE 36 FEET.
- SEE STD. DWG. U-5 OF SIS FOR LOCATION OF UTILITIES.
- SIDEWALK OR WALKWAY MAY MEANDER PROVIDING A 3" MINIMUM SEPARATION IS MAINTAINED BETWEEN THE WALKWAY OR SIDEWALK AND THE CURB. THIS AREA SHALL BE DESIGNATED AS A PUBLIC SIDEWALK EASEMENT ON THE FINAL MAP.
- NO FIRE HYDRANT OR STREET LIGHT SHALL BE LOCATED WITHIN THE SIDEWALK OR WALKWAY.
- NATIVE MAY BE USED IN LIEU OF TYPE I WITH CLV CONSTRUCTION SERVICES APPROVAL.



- SEE APPROPRIATE VILLAGE DESIGN CRITERIA FOR LANDSCAPE TREATMENT AND MOTH.
- SEE GENERAL NOTES ON STD. DWG. S-1 OF SIS.
- MINIMUM FLOWLINE TO FLOWLINE DIMENSION SHALL BE 36 FEET.
- SEE STD. DWG. U-5 OF SIS FOR LOCATION OF UTILITIES.
- SIDEWALK OR WALKWAY MAY MEANDER PROVIDING A 3" MINIMUM SEPARATION IS MAINTAINED BETWEEN THE WALKWAY OR SIDEWALK AND THE CURB. THIS AREA SHALL BE DESIGNATED AS A PUBLIC SIDEWALK EASEMENT ON THE FINAL MAP.
- NO FIRE HYDRANT OR STREET LIGHT SHALL BE LOCATED WITHIN THE SIDEWALK OR WALKWAY.
- NATIVE MAY BE USED IN LIEU OF TYPE I WITH CLV CONSTRUCTION SERVICES APPROVAL.

9+00 10+00 11+00 12+00

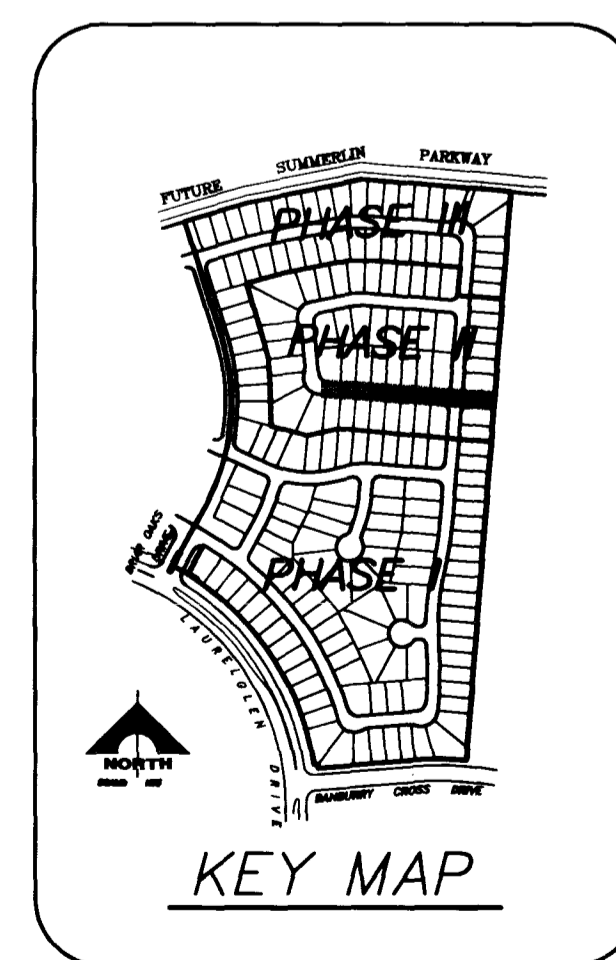
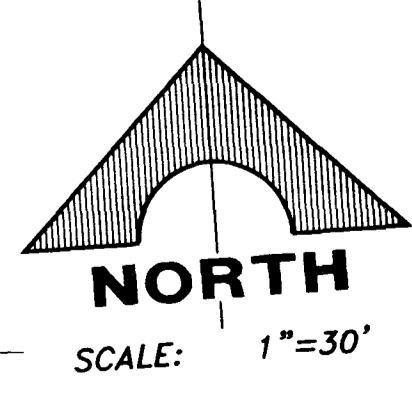
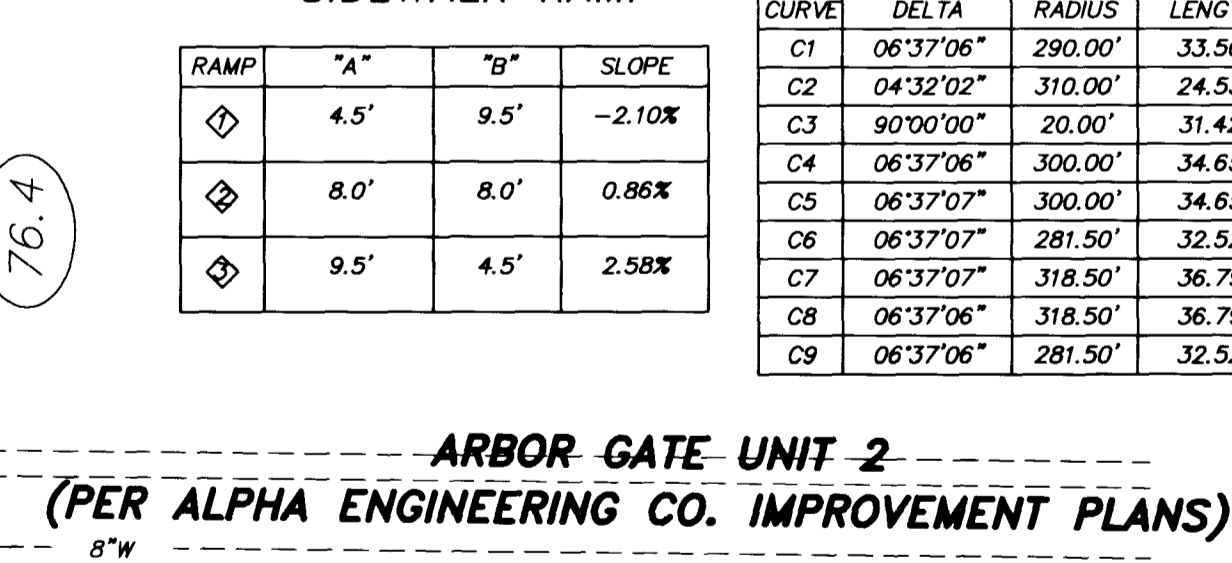
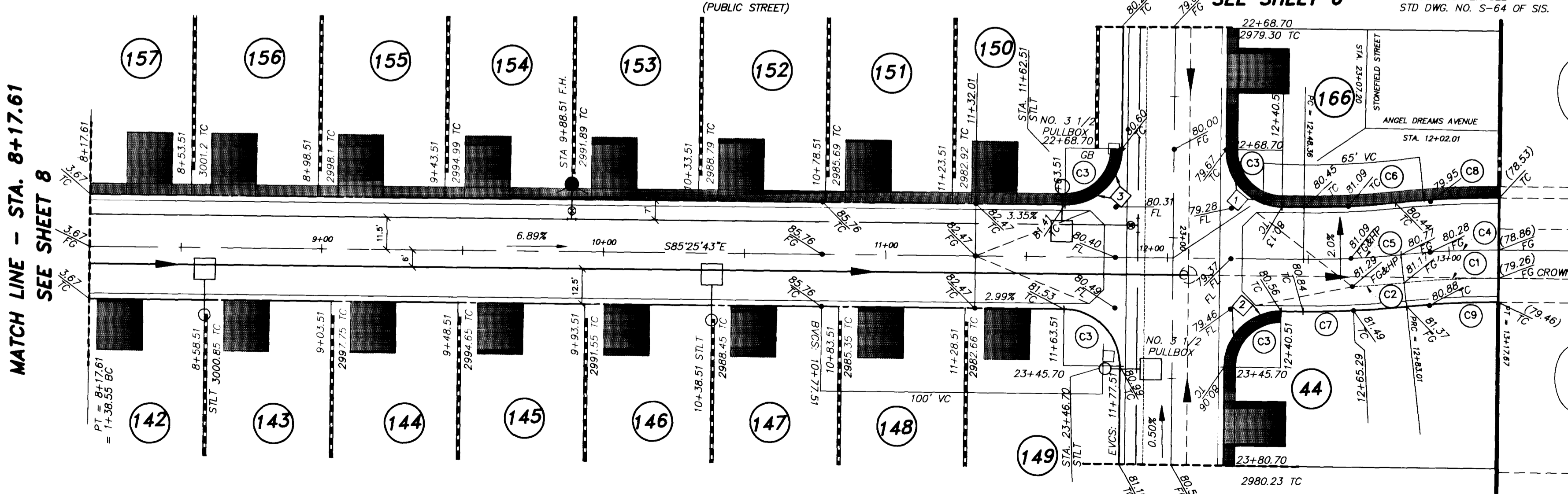
ANGEL DREAMS AVENUE (PUBLIC STREET)
 STONEFIELD STREET SEE SHEET 6

SIDEWALK RAMP

RAMP	"A"	"B"	SLOPE
1	4.5'	9.5'	-2.10%
2	8.0'	8.0'	0.86%
3	9.5'	4.5'	2.58%

CURVE TABLE

CURVE	DELTA	RADIUS	LENGTH	TANGENT
C1	06°37'06"	290.00'	33.50'	16.77'
C2	04°32'02"	310.00'	24.53'	12.27'
C3	90°00'00"	20.00'	31.42'	20.00'
C4	06°37'06"	300.00'	34.65'	17.35'
C5	06°37'07"	300.00'	34.65'	17.35'
C6	06°37'07"	281.50'	32.52'	16.28'
C7	06°37'07"	318.50'	36.79'	18.42'
C8	06°37'06"	318.50'	36.79'	18.42'
C9	06°37'06"	281.50'	32.52'	16.28'



ENGINEER'S SEAL OF THOMAS P. DYSON, P.E., No. 11506, State of Nevada, License No. 11-1-11

RECORD COPY

11506 P.E. NO. DATE 1-1-11

1555 SOUTH RAINBOW BLVD., LAS VEGAS, NEVADA 89102

G.C. WALLACE, INC.
 Engineering/Architecture

COLEMAN HOMES
 OAK HILLS AT SUMMERLIN - PHASE II
 ANGEL DREAMS AVENUE
 STA. 8+17.61 TO STA. 13+17.67

SHEET 7 OF 13 SHEETS

1074-4506-2

