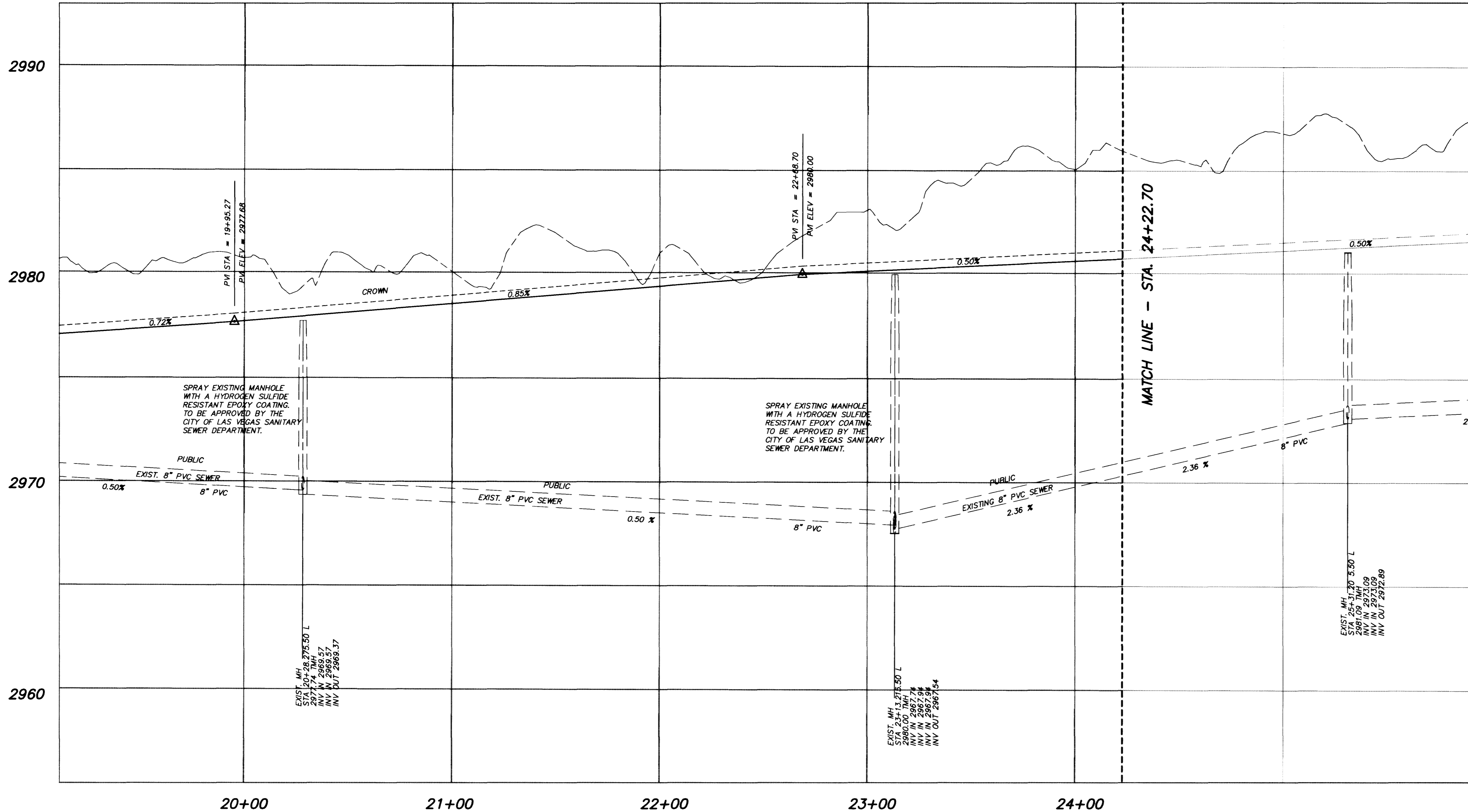


JOB NO. 743.160 PLOTTED: 01/21/98 07:48 am DRAWING: CH-108.dwg BY: R.J.R.

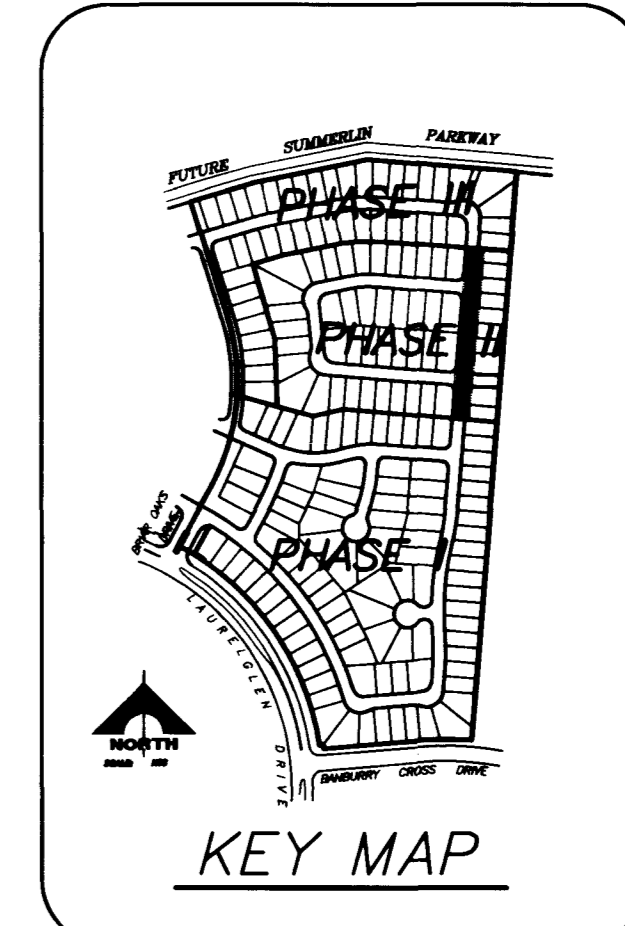
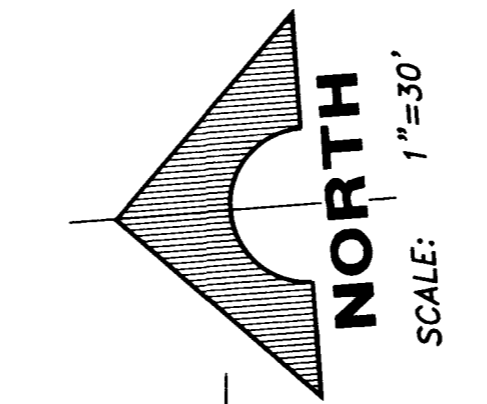
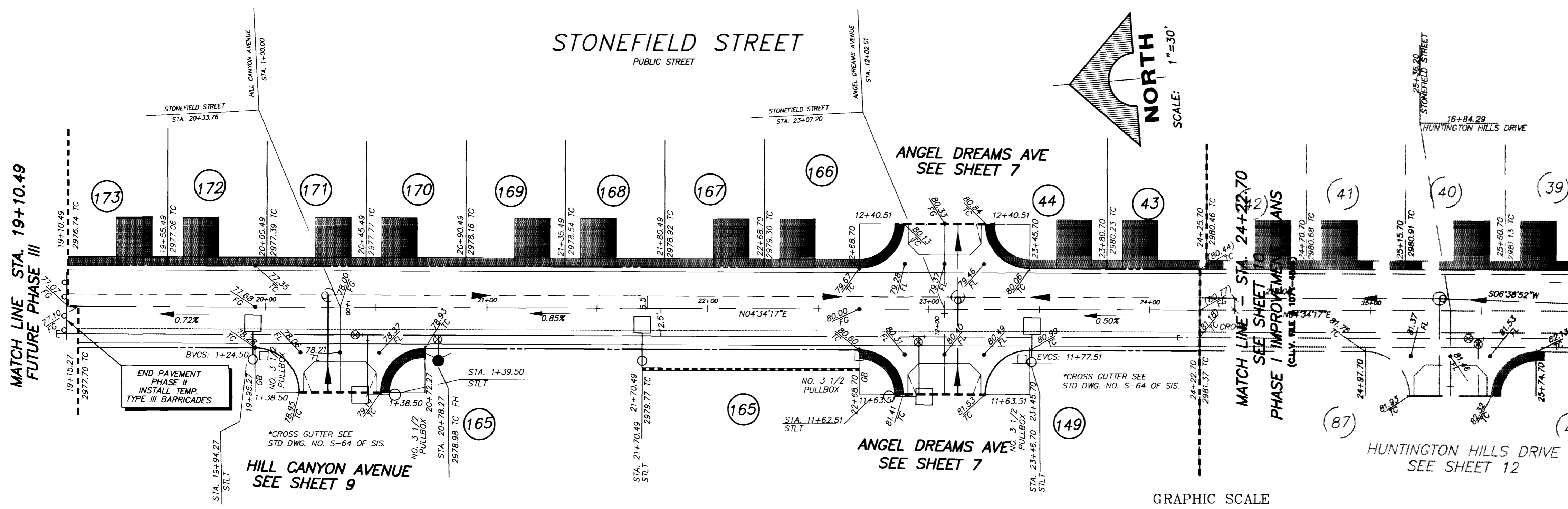
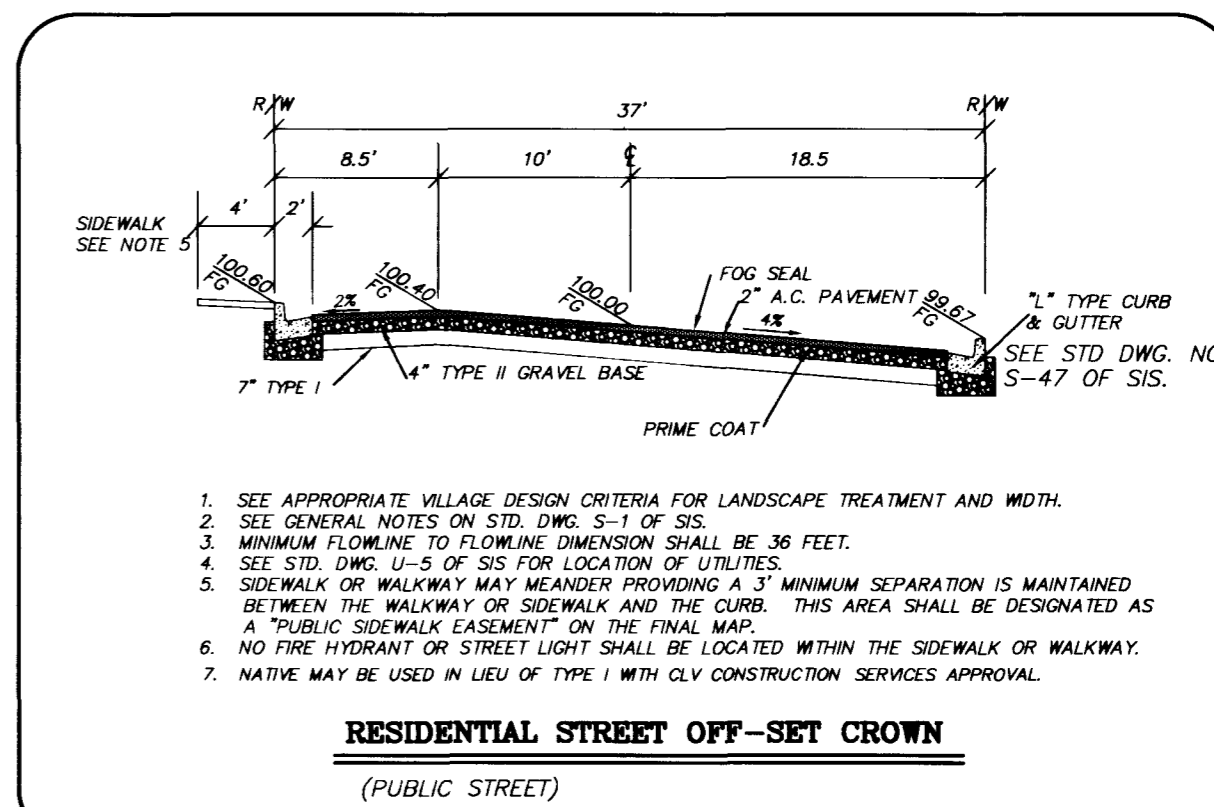
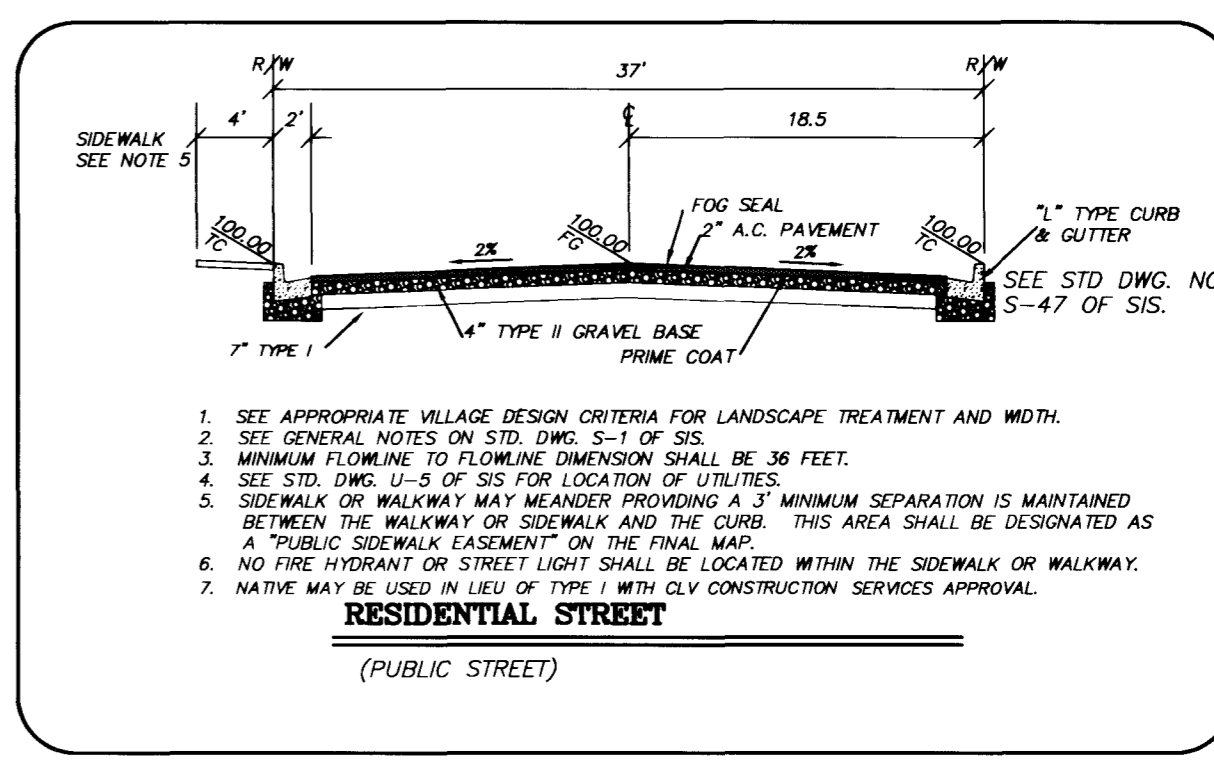


**BASIS OF BEARING**  
 NORTH 15°23'46" EAST, BEING THE BEARING OF THE CENTERLINE OF ANASAD DRIVE AS SHOWN BY MAP THEREOF ON FILE IN BOOK 63, PAGE 80 OF PLATS & RECORDS, CLARK COUNTY, NEVADA RECORDERS OFFICE.

**BENCHMARK**

NO.	DESC.	NOV 20	MAY 88	SAMBERLIN DATUM
1	BM 1	2728.823	2728.37	2728.18
2	BM 2		181.8079 40	

SAMBERLIN DATUM USED FOR THIS PROJECT

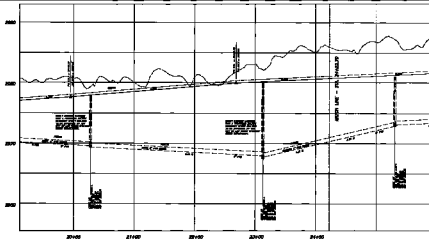


RECORDED & RETURNED TO THE ENGINEER BY: THOMAS P. DYSON, LICENSED PROFESSIONAL ENGINEER, STATE OF NEVADA, LICENSE NO. 11300. P.E. NO. DATE 11/306. 1-71-11.

G.C. WALLACE, INC. Engineering/Architecture 1555 SOUTH RAINBOW BLVD., LAS VEGAS, NEVADA 89102

COLEMAN HOMES OAK HILLS AT SUMMERLIN-PHASE II STONEFIELD STREET STA. 19+95.27 TO STA. 24+22.70

SHEET 6 OF 13 SHEETS



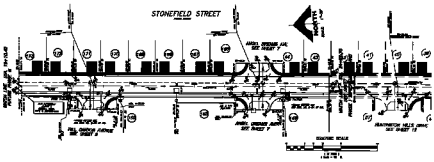
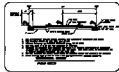
**NAME OF PROJECT**  
**STONEFIELD STREET**

**PROPOSED**

DATE	BY



SEE SHEET  
Call  
before  
Digs  
158222



U.S. WALLACE, INC.  
Engineering Department

