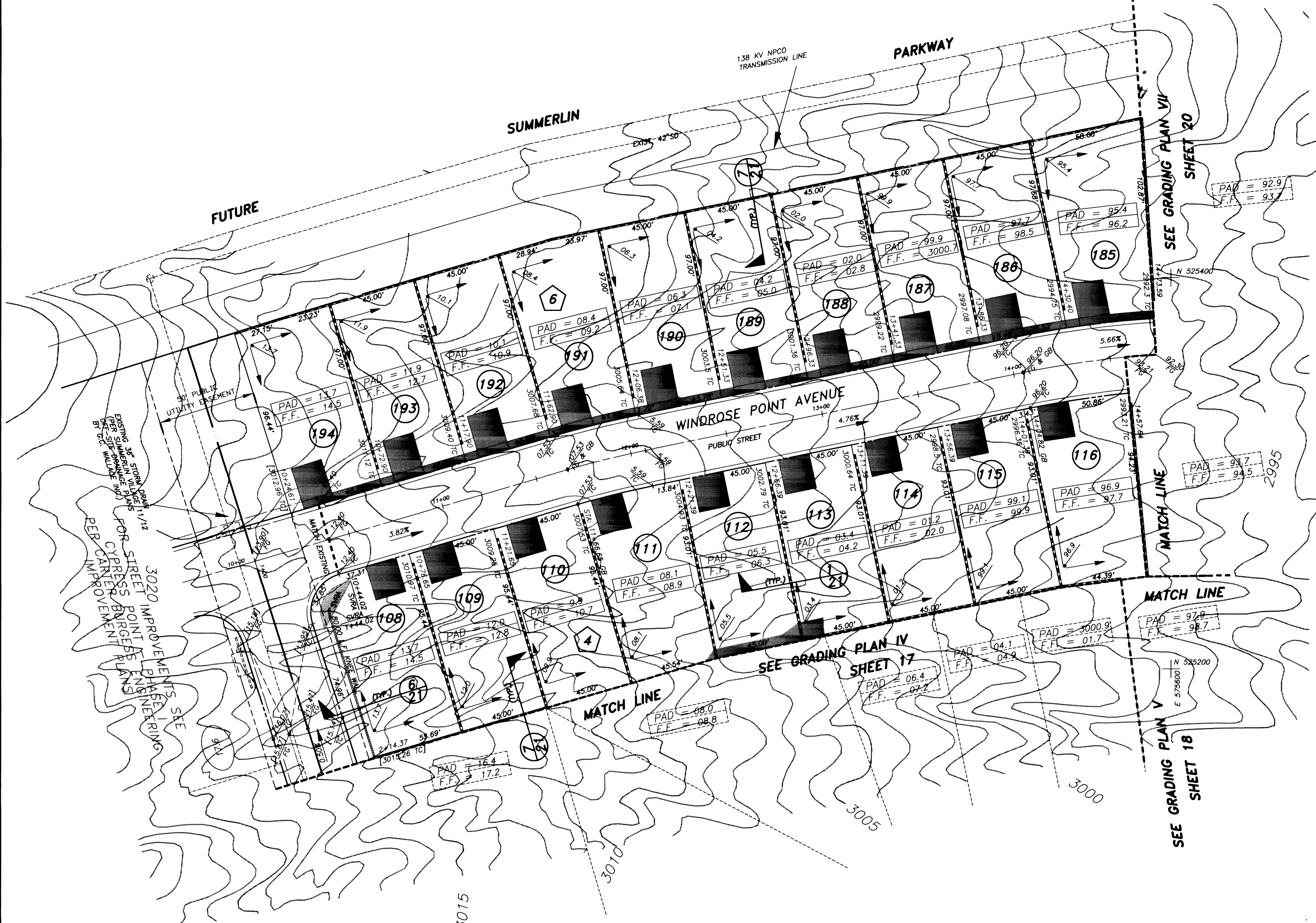


E 575200

E 575400

E 575600

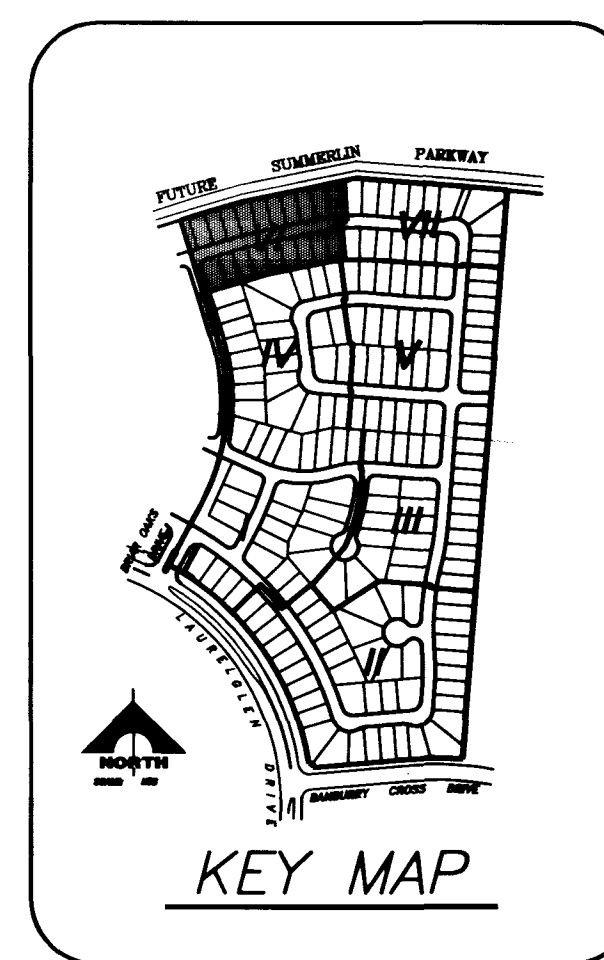
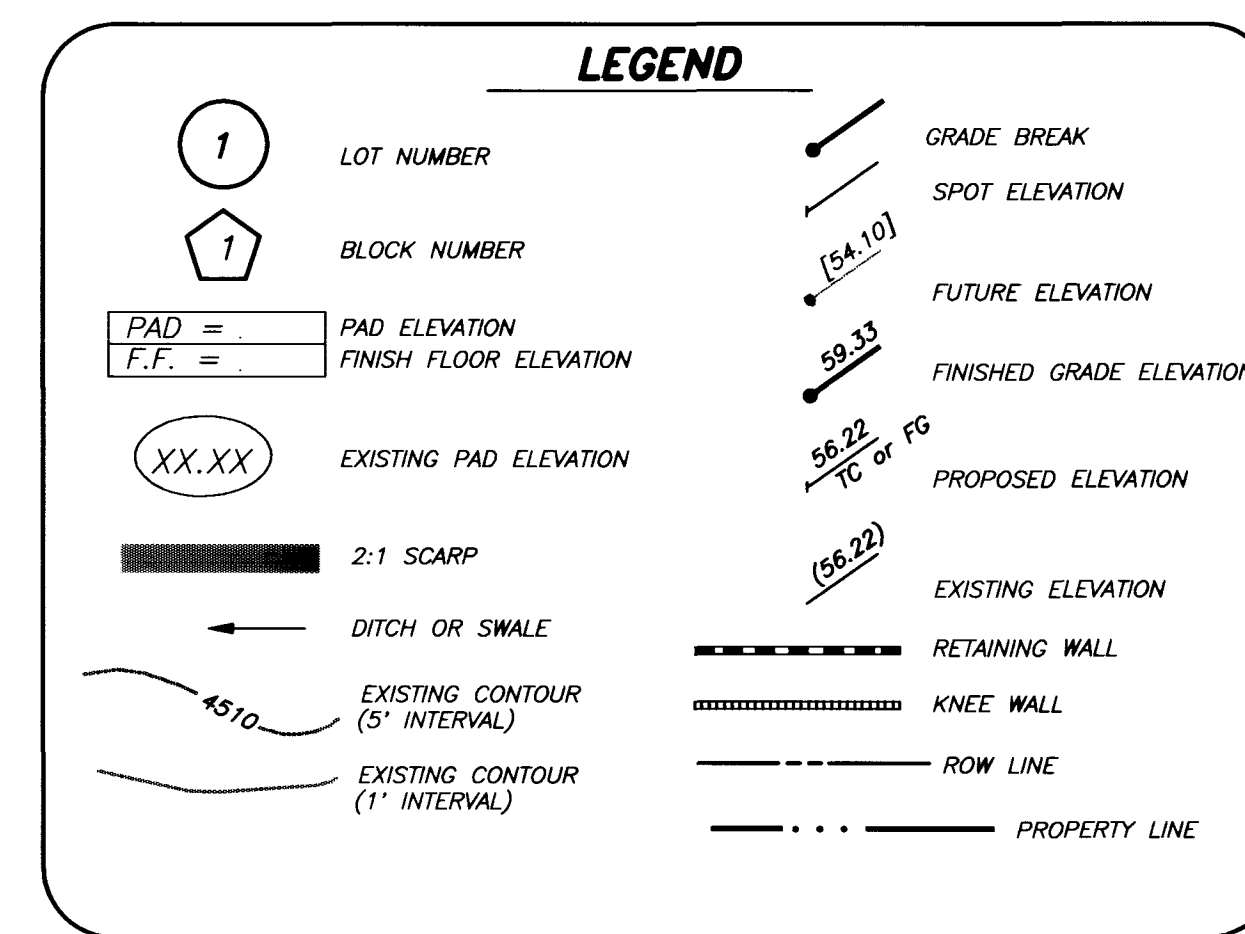


**WALL NOTES:**

- APPROVAL OF THESE PLANS BY THE CITY ENGINEER DOES NOT PERTAIN TO CONSTRUCTION OF NEW WALLS (RETAINING OR NON-RETAINING) OR MODIFICATIONS TO EXISTING WALLS.
- ALL WALLS, NEW OR EXISTING, ARE REVIEWED BY THE CITY ENGINEER FOR GRADING RELATIONSHIPS ONLY.
- ALL WALLS, RETAINING AND NON-RETAINING, MUST BE APPROVED AND A PERMIT OBTAINED FROM THE DEPARTMENT OF BUILDING AND SAFETY.
- FOR SIGHT DISTANCE REQUIREMENTS AT INTERSECTIONS SEE SUMMERLIN STD. DWG. NO. DC-3.

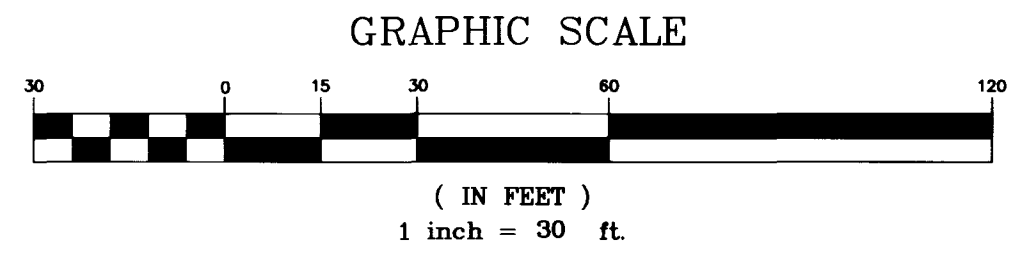
**NOTES:**

- FINISH FLOOR ELEVATIONS SHOWN ARE A MINIMUM ELEVATION.
- DIMENSIONS SHOWN ON THIS PLAN ARE FOR INFORMATION ONLY AND SHALL NOT BE USED AS A SALES TOOL BY SALES PERSONNEL OR PROSPECTIVE PURCHASERS.
- REFER TO FINAL RECORDED MAP FOR ALL LOT DIMENSIONS.

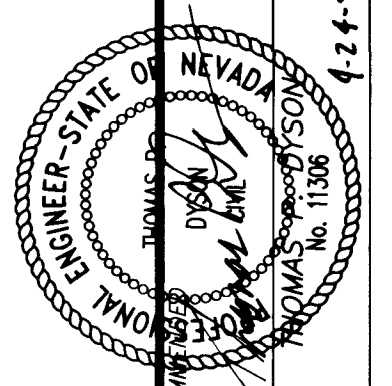


NOTE: PHASE II GRADING PLANS INCLUDED FOR INFORMATION ONLY. FINAL GRADES TO BE DETERMINED WITH CLV APPROVAL OF PHASE II.

SVRA SIGHT VISIBILITY RESTRICTION AREA (NO VIEW OBSTRUCTION OVER 30" ABOVE TOP OF CURB ALLOWED IN THE SVRA)



I CERTIFY THAT THIS GRADING PLAN IS IN CONFORMANCE WITH THE APPROVED DRAINAGE STUDY ON FILE AT THE CITY OF LAS VEGAS FOR THIS PROJECT.



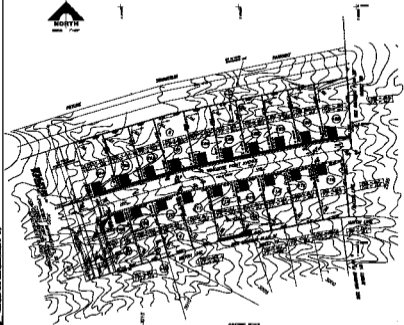
G.C. WALLACE, INC.  
Engineering/Architecture  
1555 SOUTH MAINWAY BLVD/LAS VEGAS, NEVADA 89102

COLEMAN HOMES  
OAK HILLS AT SUMMERLIN  
GRADING PLAN VI - PHASE II

SHEET  
19  
OF 24 SHEETS

JOB NO. 743.158  
PLOTTED: 04/24/97 11:46 am  
DRAWING: D:\DRAWINGS\743.158\DWG-19  
BY: 07

107Y-4506



- NOTES**
1. REVIEW OF THIS PLAN IS ONE OF THE FINAL STEPS OF THE DESIGN PROCESS.
  2. ALL DIMENSIONS ARE IN FEET AND INCHES.
  3. ALL DIMENSIONS ARE TO FACE UNLESS OTHERWISE NOTED.
  4. SEE EXHIBIT 'A' FOR DETAILS.

- NOTES**
1. ALL DIMENSIONS ARE TO FACE UNLESS OTHERWISE NOTED.
  2. SEE EXHIBIT 'A' FOR DETAILS.
  3. ALL DIMENSIONS ARE IN FEET AND INCHES.

**LEGEND**

	COLUMN		BEAM
	WALL		WINDOW
	DOOR		STAIRCASE
	ROOF		FLOOR
	FOUNDATION		SITE BOUNDARY

- SPACING OF BEAMS
- SPACING OF FLOOR JOISTS



U.S. WALLACE, INC.  
 Registered Professional Engineer  
 License No. 12345  
 197Y-4506