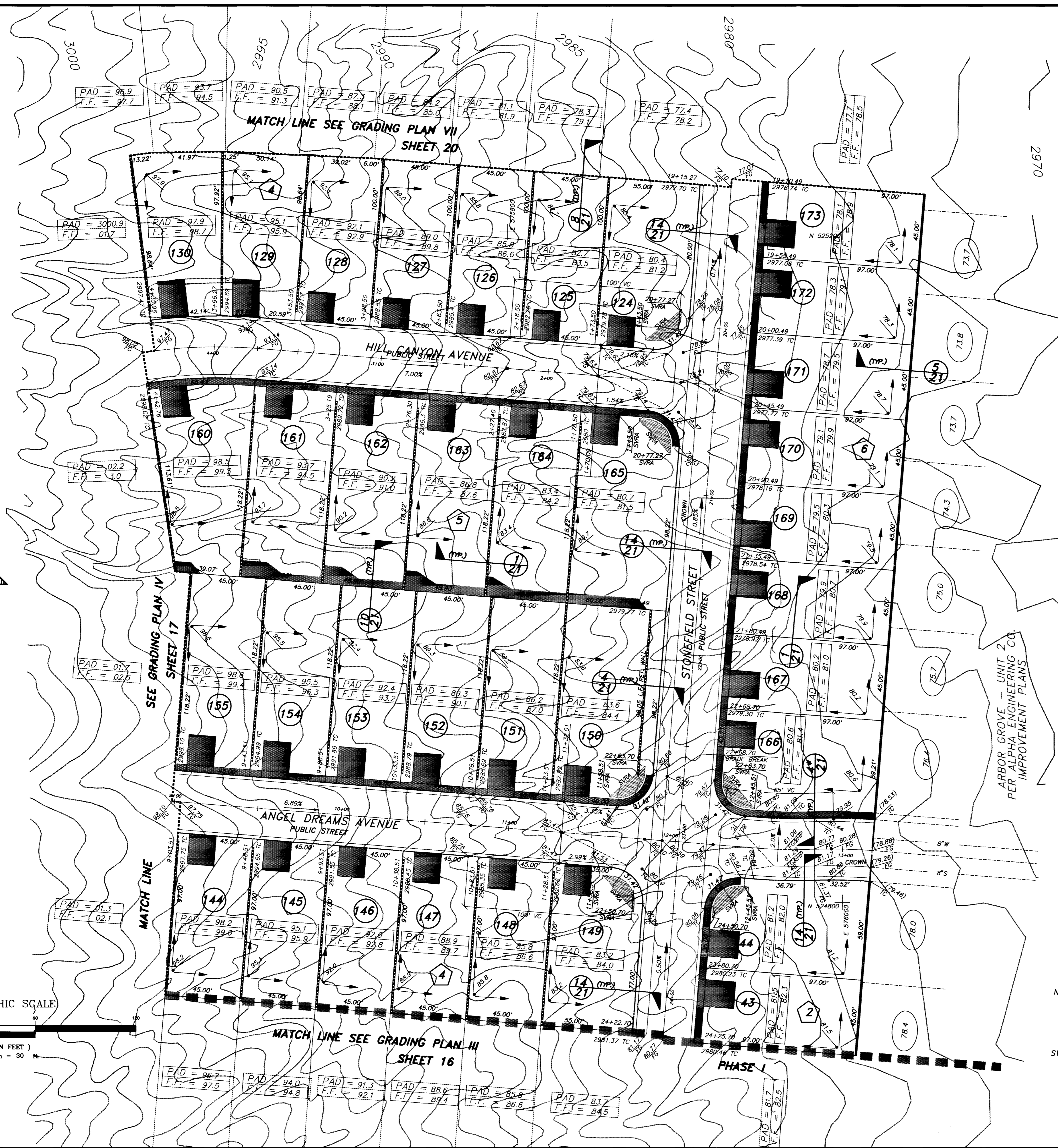


GRAPHIC SCALE

( IN FEET )  
1 inch = 30 ft

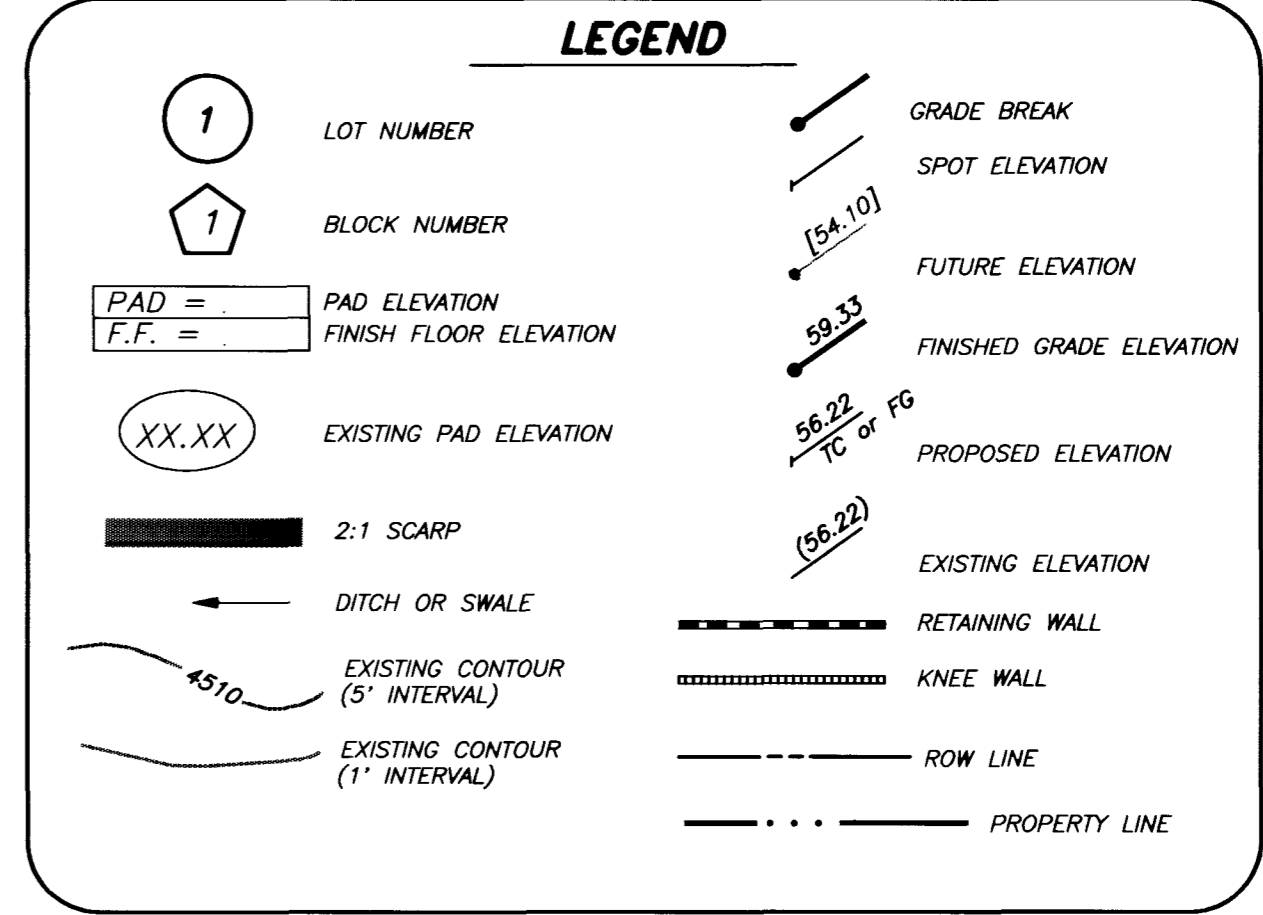


**WALL NOTES:**

- APPROVAL OF THESE PLANS BY THE CITY ENGINEER DOES NOT PERTAIN TO CONSTRUCTION OF NEW WALLS (RETAINING OR NON-RETAINING) OR MODIFICATIONS TO EXISTING WALLS.
- ALL WALLS, NEW OR EXISTING, ARE REVIEWED BY THE CITY ENGINEER FOR GRADING RELATIONSHIPS ONLY.
- ALL WALLS, RETAINING AND NON-RETAINING, MUST BE APPROVED AND A PERMIT OBTAINED FROM THE DEPARTMENT OF BUILDING AND SAFETY.
- FOR SIGHT DISTANCE REQUIREMENTS AT INTERSECTIONS SEE SUMMERLIN STD. DWG. NO. DC-3.

**NOTES:**

- FINISH FLOOR ELEVATIONS SHOWN ARE A MINIMUM ELEVATION.
- DIMENSIONS SHOWN ON THIS PLAN ARE FOR INFORMATION ONLY AND SHALL NOT BE USED AS A SALES TOOL BY SALES PERSONNEL OR PROSPECTIVE PURCHASERS.
- REFER TO FINAL RECORDED MAP FOR ALL LOT DIMENSIONS.

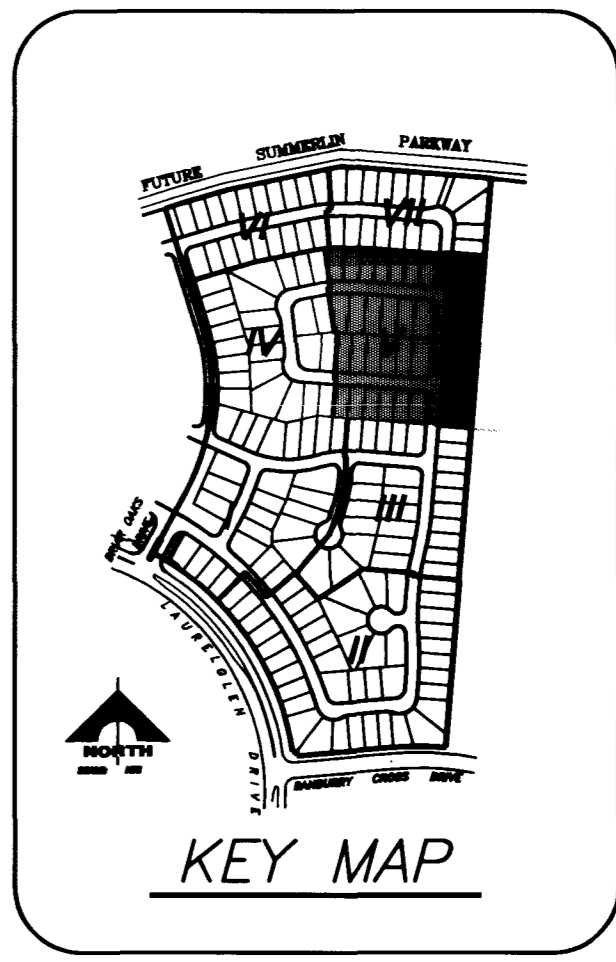


ARBOR GROVE - UNIT 3  
PER ALPHA ENGINEERING CO.  
IMPROVEMENT PLANS

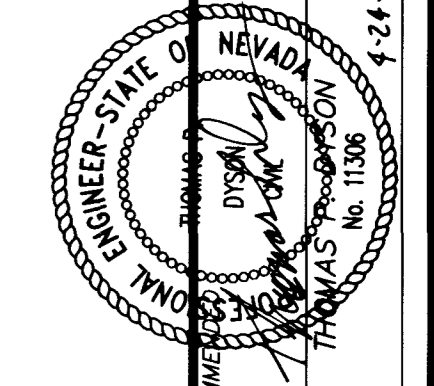
ARBOR GROVE - UNIT 2  
PER ALPHA ENGINEERING CO.  
IMPROVEMENT PLANS

NOTE: PHASE II GRADING PLANS INCLUDED FOR INFORMATION ONLY. FINAL GRADES TO BE DETERMINED WITH CLV APPROVAL OF PHASE II.

SVRA SIGHT VISIBILITY RESTRICTION AREA (NO VIEW OBSTRUCTION OVER 30° ABOVE TOP OF CURB ALLOWED IN THE SVRA)



I CERTIFY THAT THIS GRADING PLAN IS IN CONFORMANCE WITH THE APPROVED DRAINAGE STUDY ON FILE AT THE CITY OF LAS VEGAS FOR THIS PROJECT.



REV.	DATE	DESCRIPTION

RECORDED: 04/24/97 11:37 am  
DRAWN: P/

G. C. WALLACE, INC.  
Engineering/Architecture  
1555 SOUTH RAINBOW BLVD., LAS VEGAS, NEVADA 89102

COLEMAN HOMES  
OAK HILLS AT SUMMERLIN  
GRADING PLAN V - PHASE II

SHEET  
18  
OF 24 SHEETS

