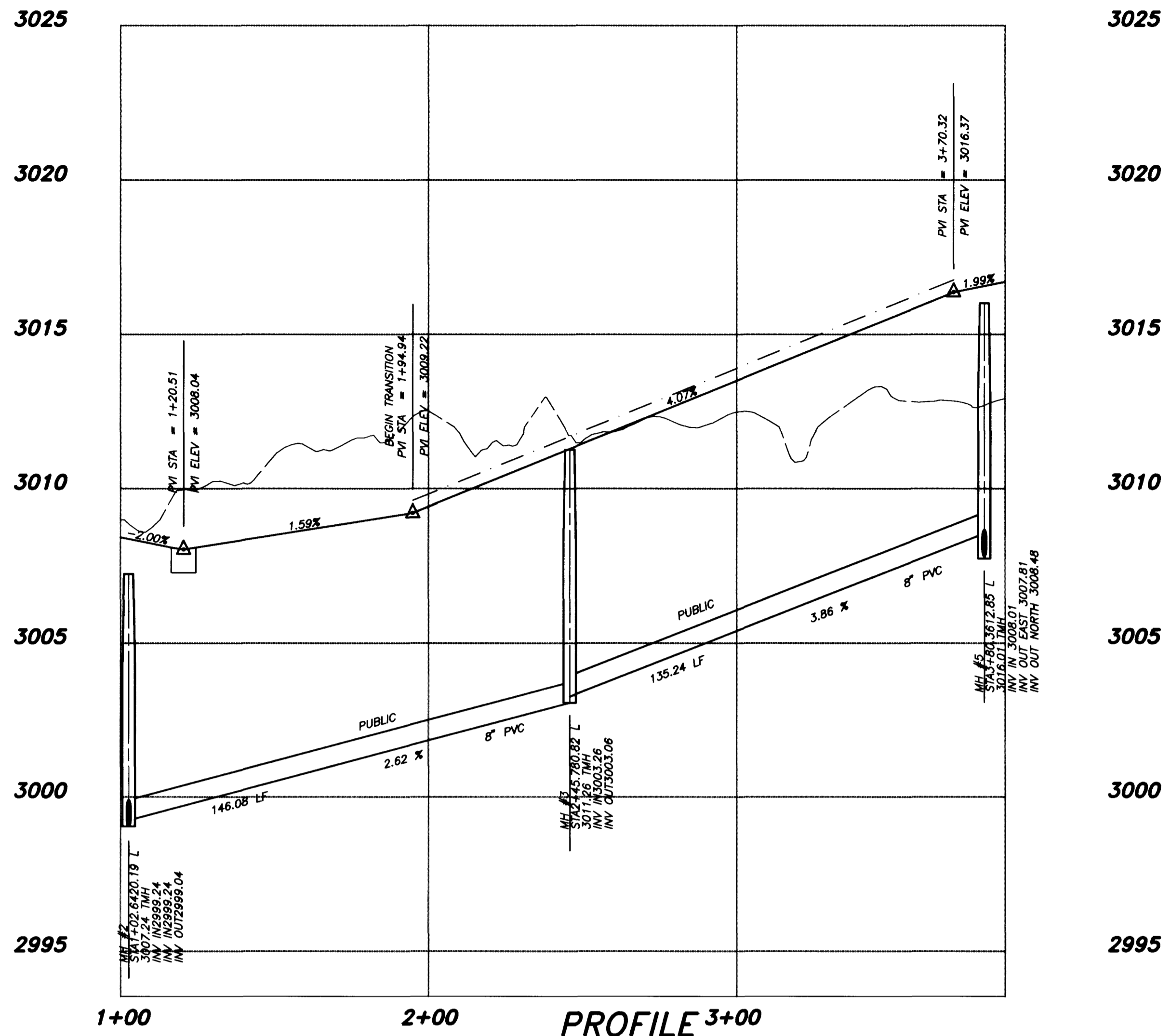


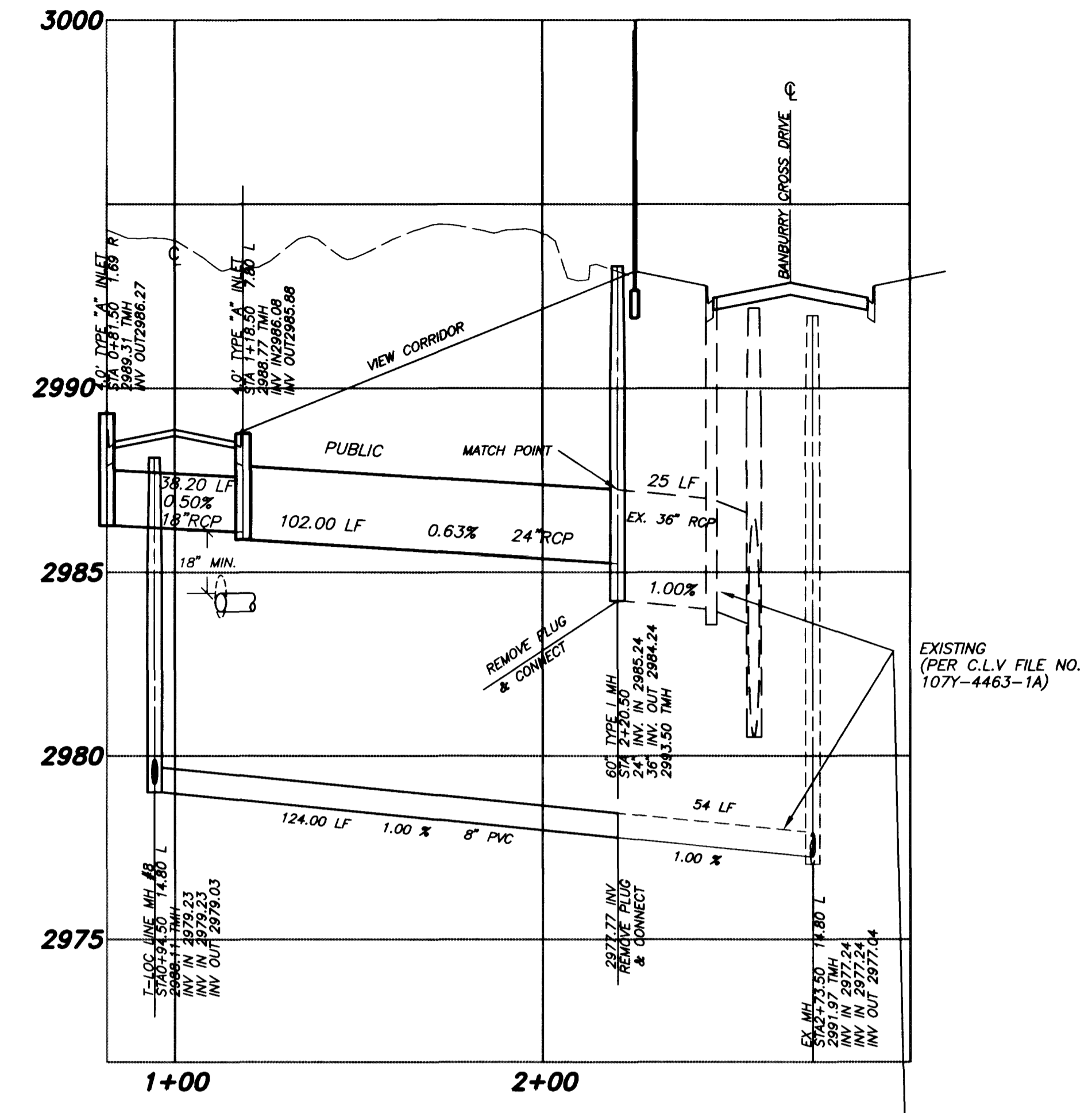
JOB NO. 743.158 PLOTTED: 04/22/2021 2:01 PM DRAWING: D:\DRAWINGS\743.158\DWG-11.dwg BR: TP



3025
3020
3015
3010
3005
3000
2995

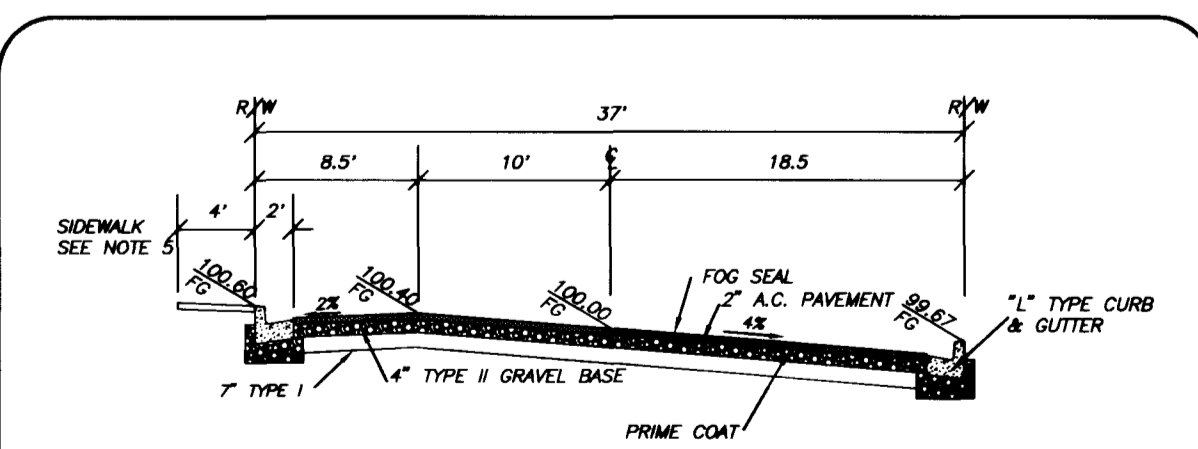
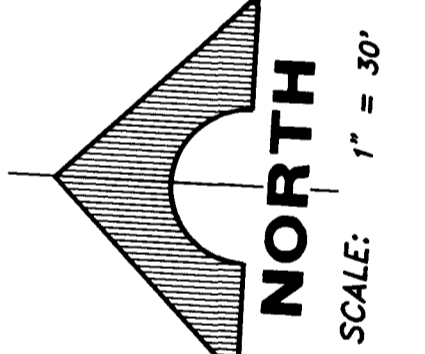
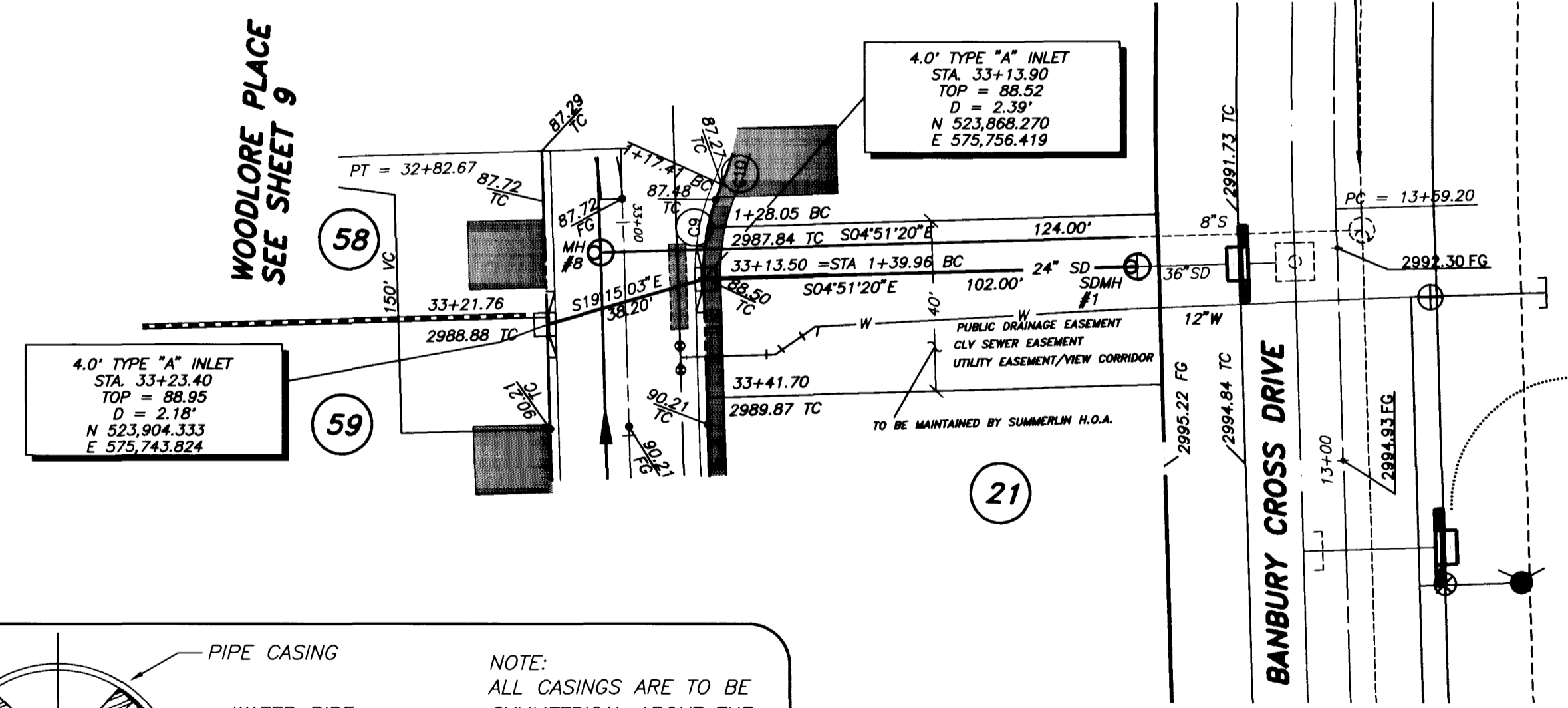
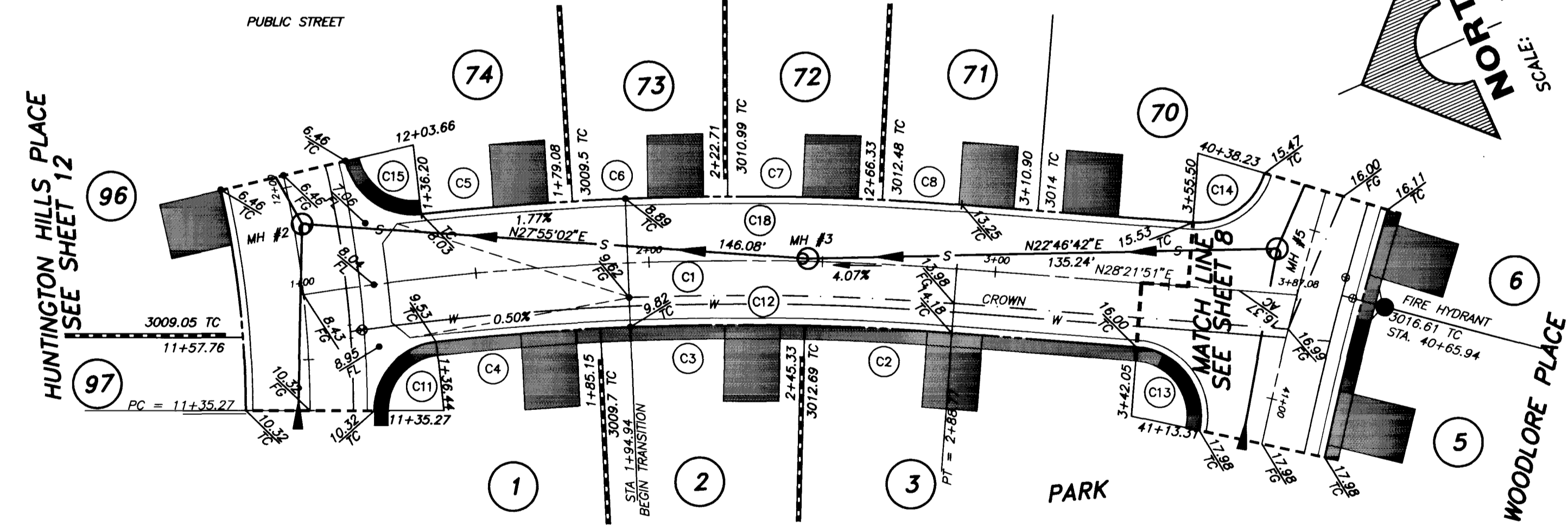
Call before you Dig.
1-800-227-2600
UNDERGROUND SERVICES (USA)

CALL BEFORE YOU DO OVERHEAD
1-702-593-6111



PROFILE
SCALE: HORIZ. 1" = 30'
VERT. 1" = 3'

OAK COUNTRY LANE



- SEE APPROPRIATE VILLAGE DESIGN CRITERIA FOR LANDSCAPE TREATMENT AND WIDTH.
- SEE GENERAL NOTES ON STD. DWG. S-1 OF SIS.
- MINIMUM FLOWLINE TO FLOWLINE DIMENSION SHALL BE 36 FEET.
- SEE STD. DWG. U-5 OF SIS FOR LOCATION OF UTILITIES.
- SIDEWALK OR WALKWAY MAY MEANDER PROVIDING A 3' MINIMUM SEPARATION IS MAINTAINED BETWEEN THE WALKWAY OR SIDEWALK AND THE CURB. THIS AREA SHALL BE DESIGNATED AS A "PUBLIC SIDEWALK EASEMENT" ON THE FINAL MAP.
- NO FIRE HYDRANT OR STREET LIGHT SHALL BE LOCATED WITHIN THE SIDEWALK OR WALKWAY.
- NATIVE MAY BE USED IN LIEU OF TYPE I WITH CLV CONSTRUCTION SERVICES APPROVAL.

RESIDENTIAL STREET OFF-SET CROWN
(PUBLIC STREET)

CURVE TABLE

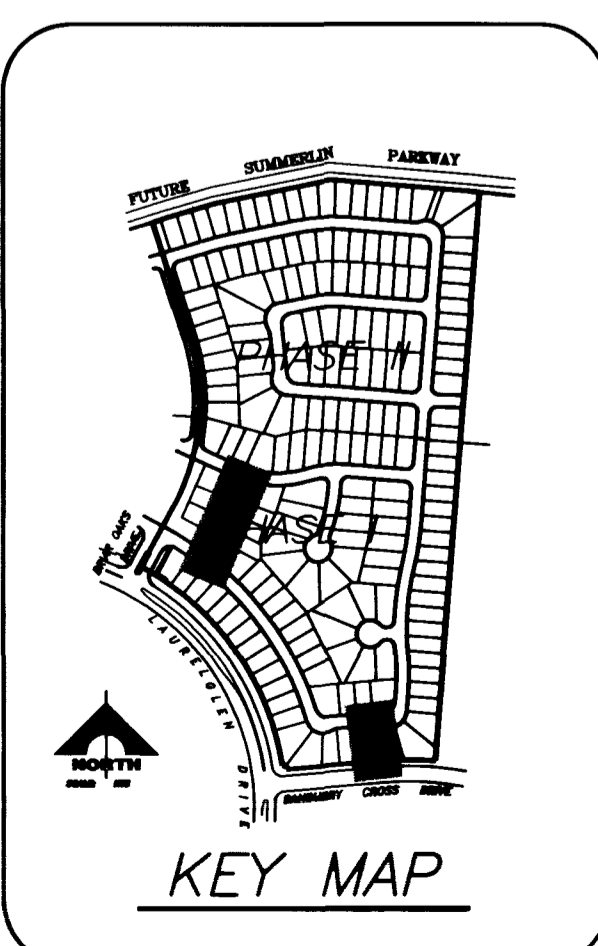
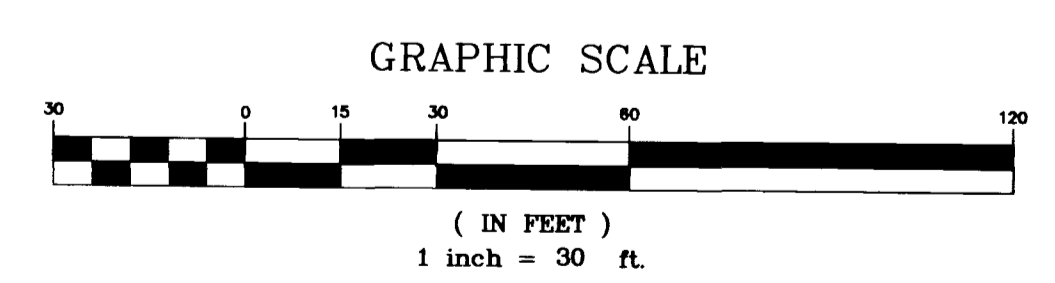
| CURVE | DELTA | RADIUS | LENGTH | TANGENT |
|-------|-----------|---------|---------|---------|
| C1 | 13°14'46" | 816.50' | 188.77' | 94.81' |
| C2 | 03°02'53" | 798.00' | 42.45' | 21.23' |
| C3 | 04°13'23" | 798.00' | 58.82' | 29.42' |
| C4 | 03°25'06" | 798.00' | 47.61' | 23.81' |
| C5 | 03°00'32" | 835.00' | 43.85' | 21.93' |
| C6 | 03°03'41" | 835.00' | 44.62' | 22.31' |
| C7 | 03°03'40" | 835.00' | 44.61' | 22.31' |
| C8 | 01°34'28" | 835.00' | 22.95' | 11.47' |
| C9 | 25°50'31" | 50.00' | 22.55' | 11.47' |
| C10 | 08°36'53" | 50.00' | 7.52' | 3.77' |
| C11 | 83°39'10" | 20.00' | 29.20' | 17.90' |
| C12 | 10°41'21" | 798.00' | 148.88' | 74.66' |
| C13 | 97°35'55" | 20.00' | 34.07' | 22.85' |
| C14 | 77°46'25" | 20.00' | 27.15' | 16.13' |
| C15 | 83°18'08" | 20.00' | 29.08' | 17.79' |
| C18 | 10°42'21" | 835.00' | 156.02' | 78.24' |

MH COORDINATES

| MH# | NORTH | EAST |
|---------|-------------|-------------|
| MH #2 | 524,606.115 | 575,392.177 |
| MH #3 | 524,477.036 | 575,323.783 |
| MH #5 | 524,352.340 | 575,271.421 |
| MH #8 | 523,892.776 | 575,761.362 |
| SDMH #1 | 523,766.638 | 575,765.052 |

TYPICAL CASING SECTION

NOTE:
1. STEEL PIPE CASING SHALL BE FABRICATED FROM A MIN. OF 1/4" THICK STEEL PLATES, CONFORMING TO THE REQUIREMENTS OF ASTM A283, GRADE B, C, OR D. ALL JOINTS SHALL BE WELDED. INTERIOR JOINTS SHALL BE GROUNDED TO A SMOOTH FINISH. ALL WELDING SHALL BE PERFORMED IN ACCORDANCE WITH AWS A5.1. "AWMA STANDARD FOR FABRICATED ELECTRICALLY WELDED STEEL WATER PIPE." COATINGS FOR STEEL CASING ARE NOT REQUIRED.
2. PIPE CASING SHALL BE LAID TRUE TO LINE AND GRADE WITH NO BENDS OR CHANGES IN GRADE FOR THE FULL LENGTH OF THE CASING.
3. THE PIPE SHALL BE SUPPORTED AT EACH END OF EACH JOINT WITH SPACERS. AFTER INSTALLATION OF THE WATER PIPE, THE CASING PIPE SHALL BE SEALED AT BOTH ENDS WITH CASING END SEALS.



APPROVED FOR CONSTRUCTION
LAS VEGAS VALLEY WATER DISTRICT DATE

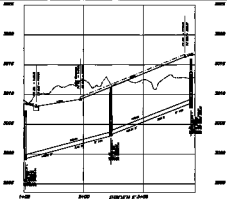
| REV | DATE | DESCRIPTION | CLV | DATE |
|-----|------|-------------|-----|------|
| | | | | |

REGISTERED PROFESSIONAL ENGINEER
STATE OF NEVADA
No. 11306
G. C. WALLACE, INC.
1555 SOUTH RAINBOW BLVD./LAS VEGAS, NEVADA 89102
P.E. NO. DATE
11306 4-21-97

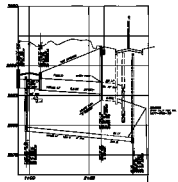
G. C. WALLACE, INC.
Engineering/Architecture

COLEMAN HOMES
OAK HILLS AT SUMMERLIN - PHASE I
OAK COUNTRY LANE
STA. 1+00 TO STA. 3+87.08

SHEET
11
OF 24 SHEETS



OAK COUNTRY LANE



PROFILE



| Station | Prop. Elev. | Ground Elev. | Grade |
|---------|-------------|--------------|-------|
| 1+00 | 280 | 280 | 2.00% |
| 1+10 | 282 | 282 | 2.00% |
| 1+20 | 284 | 284 | 2.00% |
| 1+30 | 286 | 286 | 2.00% |
| 1+40 | 288 | 288 | 2.00% |
| 1+50 | 290 | 290 | 2.00% |
| 1+60 | 292 | 292 | 2.00% |
| 1+70 | 294 | 294 | 2.00% |
| 1+80 | 296 | 296 | 2.00% |
| 1+90 | 298 | 298 | 2.00% |
| 2+00 | 300 | 300 | 2.00% |

| Station | Prop. Elev. | Ground Elev. | Grade |
|---------|-------------|--------------|-------|
| 1+00 | 280 | 280 | 2.00% |
| 1+10 | 282 | 282 | 2.00% |
| 1+20 | 284 | 284 | 2.00% |
| 1+30 | 286 | 286 | 2.00% |
| 1+40 | 288 | 288 | 2.00% |
| 1+50 | 290 | 290 | 2.00% |
| 1+60 | 292 | 292 | 2.00% |
| 1+70 | 294 | 294 | 2.00% |
| 1+80 | 296 | 296 | 2.00% |
| 1+90 | 298 | 298 | 2.00% |
| 2+00 | 300 | 300 | 2.00% |



DATE: 11/15/11
 DRAWN BY: J. WALLACE, P.E.
 CHECKED BY: J. WALLACE, P.E.
 PROJECT: OAK COUNTRY LANE
 SHEET: 11 OF 11