

**NOTES:**

- MASONRY UNITS SHALL BE ASTM C-90, GRADE N-1 HOLLOW CONCRETE UNITS. MASONRY DESIGN STRESS IS AS FOLLOWS:  $F_m = 1500 \text{ PSI (HALF STRESSES ARE USED UNLESS SPECIAL INSPECTION IS CALLED FOR.)}$
- MORTAR SHALL BE ASTM C-270, TYPE "M" OR "S", WITH A MINIMUM STRENGTH OF 1800 psi AT 28 DAYS.
- GROUT SHALL HAVE A MINIMUM STRENGTH OF 2000 PSI AT 28 DAYS USING TYPE V CEMENT PER ASTM C-150.
- CONCRETE SHALL HAVE A MINIMUM STRENGTH OF 3000 PSI AT 28 DAYS USING TYPE V CEMENT PER ASTM C-150 (DESIGN BASED ON  $f_c = 2800 \text{ psi}$  WITH NO SPECIAL INSPECTION).
- REINFORCING STEEL SHALL CONFORM TO ASTM A-615, GRADE 60.
- UNLESS OTHERWISE NOTED, ALL MATERIALS SHALL CONFORM TO THE UNIFORM BUILDING CODE, LATEST EDITION, AND PER STANDARD SPECIFICATIONS FOR THE CITY OF LAS VEGAS, NEVADA.
- SOLID GROUT ALL MASONRY UNITS BELOW HIGHEST FINISH GRADE AT THE WALL.
- ALL WALLS ARE SUBJECT TO APPROVAL BY THE CITY OF LAS VEGAS, NEVADA BUILDING DEPARTMENT.
- WALLS SHALL BE STEPPED ONLY AS SHOWN ON THE PLANS.
- ALL CORNERS OR ANGLES SHALL BE TIED TOGETHER WITH REINFORCING STEEL AND GROUTED SOLID.
- HORIZONTAL JOINT REINFORCING SHALL BE 9-GA. LADDER TYPE WITH LAP SPLICES OF 12" MINIMUM INCLUDING CORNERS AND INTERSECTIONS.
- BOND BEAMS AND JOINT REINFORCING SHALL NOT BE CONTINUOUS THROUGH WALL CONSTRUCTION JOINTS.
- WHERE VERTICAL GROUT LIFTS ARE NOT CONTINUOUS FOR THE ENTIRE HEIGHT OF THE WALL, TERMINATE LIFT 1' BELOW TOP OF TOP BLOCK TO FORM A KEY FOR FUTURE LIFTS.
- LOCATE KEYS IN RETAINING WALL AT A MAXIMUM SPACING OF 24'-0".
- BACKFILL BEHIND WALLS SHALL BE COMPACTED TO 90% OF STANDARD PROCTOR DENSITY.
- IF ACTUAL HEIGHT OF WALL IS NOT LISTED IN TABLE BELOW, USE STEEL AND DIMENSIONS FOR NEXT HIGHER WALL LISTED.
- PROJECT LOGS REPORT: TERRACON CONSULTANTS WESTERN, INC. PROJECT NO. 64465223 JUNE 26, 1996

ALLOWABLE SOILS BEARING PRESSURE = 1500 psf (2000 psf W/16" MIN DEPTH BELOW FINISH GRADE)  
 SOIL ACTIVE PRESSURE = 35 psf (LEVEL)  
 SOIL PASSIVE PRESSURE = 250 psf/ft  
 COEFFICIENT OF FRICTION = 0.4

RECORDS

REV.	DATE	DESCRIPTION	CLY.	DATE

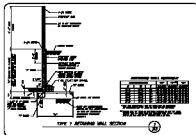
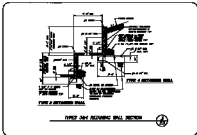
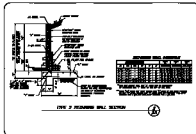
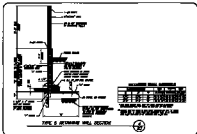
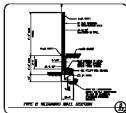
8255  
P.E. NO. DATE

REGISTERED PROFESSIONAL ENGINEER - STATE OF NEVADA  
 G. C. WALLACE, INC.  
 Engineering/Architecture  
 1555 SOUTH RAINBOW BLVD./LAS VEGAS, NEVADA 89102

COLEMAN HOMES  
 OAK HILLS AT SUMMERLIN  
 RETAINING WALL DETAILS

SHEET  
 23  
 OF 24 SHEETS

JOB NO. 749.169  
 PLOTTED: 04/24/97 12:25 pm  
 DRAWING: D:\DRAWINGS\749.169\04-23  
 BY: OF



- NOTES**
1. SEE SPECIFICATIONS FOR MATERIALS AND CONSTRUCTION.
  2. SEE SPECIFICATIONS FOR MATERIALS AND CONSTRUCTION.
  3. SEE SPECIFICATIONS FOR MATERIALS AND CONSTRUCTION.
  4. SEE SPECIFICATIONS FOR MATERIALS AND CONSTRUCTION.
  5. SEE SPECIFICATIONS FOR MATERIALS AND CONSTRUCTION.
  6. SEE SPECIFICATIONS FOR MATERIALS AND CONSTRUCTION.
  7. SEE SPECIFICATIONS FOR MATERIALS AND CONSTRUCTION.
  8. SEE SPECIFICATIONS FOR MATERIALS AND CONSTRUCTION.
  9. SEE SPECIFICATIONS FOR MATERIALS AND CONSTRUCTION.
  10. SEE SPECIFICATIONS FOR MATERIALS AND CONSTRUCTION.
  11. SEE SPECIFICATIONS FOR MATERIALS AND CONSTRUCTION.
  12. SEE SPECIFICATIONS FOR MATERIALS AND CONSTRUCTION.
  13. SEE SPECIFICATIONS FOR MATERIALS AND CONSTRUCTION.
  14. SEE SPECIFICATIONS FOR MATERIALS AND CONSTRUCTION.
  15. SEE SPECIFICATIONS FOR MATERIALS AND CONSTRUCTION.
  16. SEE SPECIFICATIONS FOR MATERIALS AND CONSTRUCTION.
  17. SEE SPECIFICATIONS FOR MATERIALS AND CONSTRUCTION.
  18. SEE SPECIFICATIONS FOR MATERIALS AND CONSTRUCTION.
  19. SEE SPECIFICATIONS FOR MATERIALS AND CONSTRUCTION.
  20. SEE SPECIFICATIONS FOR MATERIALS AND CONSTRUCTION.