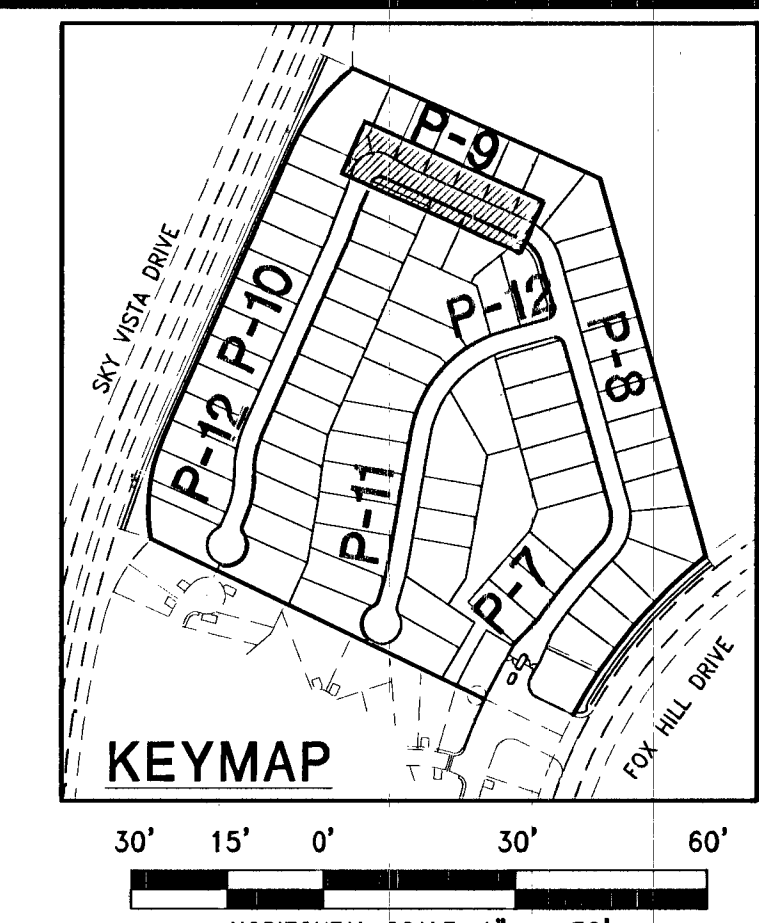
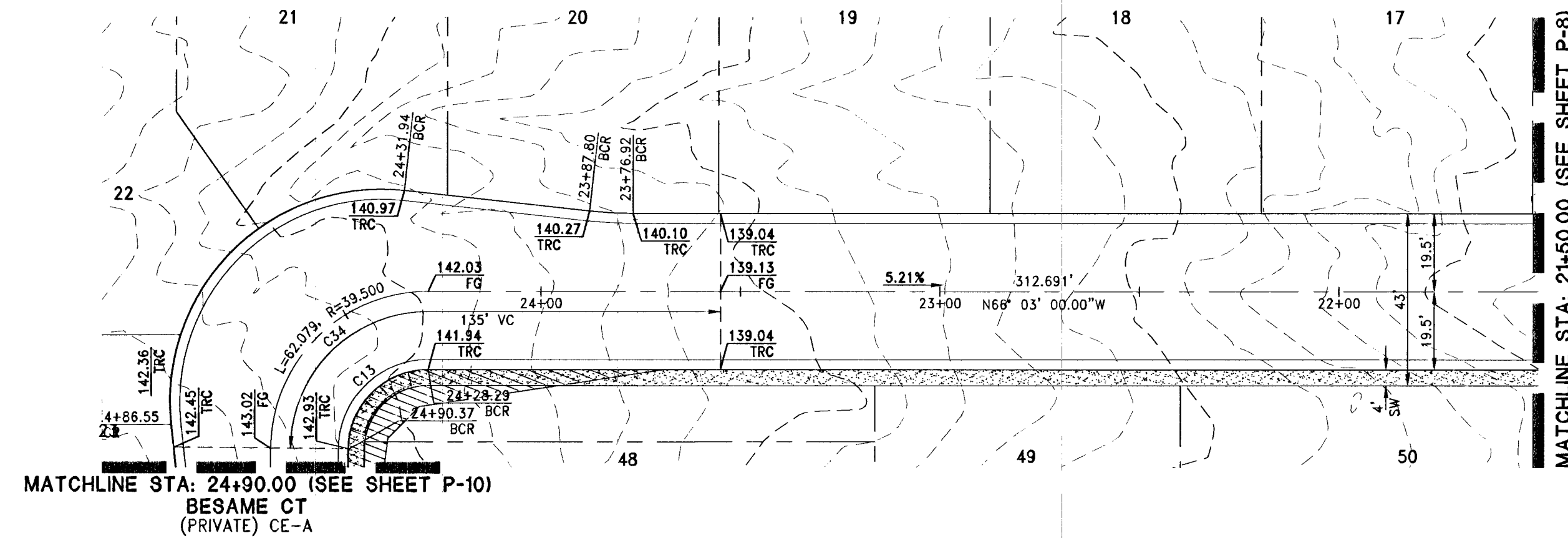


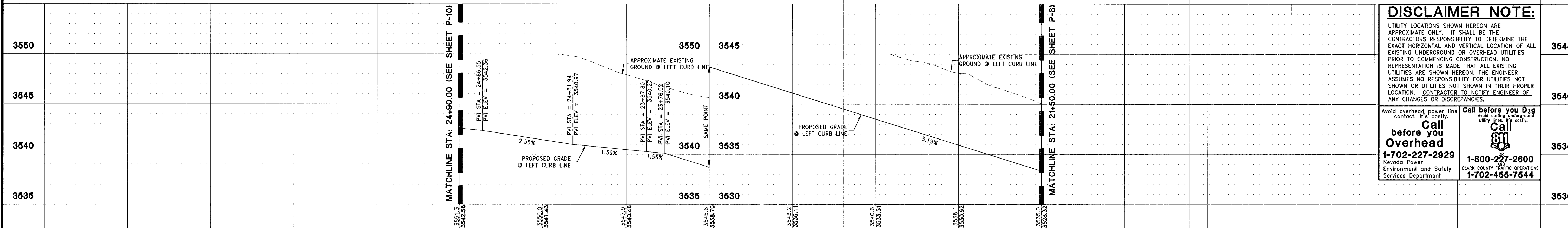
**BENCHMARK**  
 CITY OF LAS VEGAS BENCHMARK STATION 5LV09 34NE6  
 RIVET AND PLATE IN TOP OF CURB AT THE NORTHEAST CORNER OF DESERT FOOTHILLS AND ALTA DRIVE.  
 ELEVATION = 1007.197 METERS (NAVD'88)  
 ELEVATION = 3304.45 US SURVEY FEET (NAVD'88)

**BASIS OF BEARINGS**  
 NORTH 89°48'49" EAST, BEING THE BEARING OF THE NORTH LINE OF SECTION 27, TOWNSHIP 20 SOUTH, RANGE 59 EAST, M.D.M., CITY OF LAS VEGAS, CLARK COUNTY, NEVADA AS SHOWN BY MAP THEREOF ON FILE IN FILE 91, PAGE 28 OF PARCEL MAPS IN THE COUNTY RECORDER'S OFFICE, CLARK COUNTY, NEVADA.

**NOTE**  
 SEE SHEET P-3 FOR CENTERLINE DATA, CURB DATA, AND UTILITY PROFILES.



**TEMPESTAD AVE  
 (PRIVATE) CE-A**



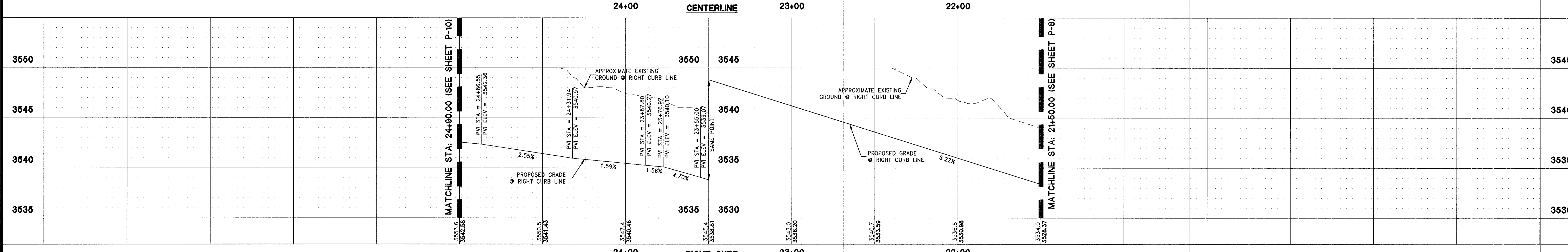
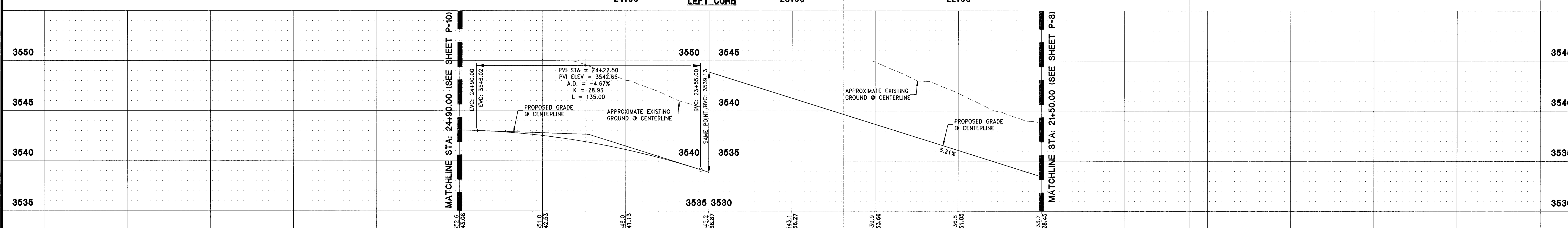
**DISCLAIMER NOTE:**  
 UTILITY LOCATIONS SHOWN HEREON ARE APPROXIMATE ONLY. IT SHALL BE THE CONTRACTOR'S RESPONSIBILITY TO DETERMINE THE EXACT HORIZONTAL AND VERTICAL LOCATION OF ALL EXISTING UNDERGROUND OR OVERHEAD UTILITIES PRIOR TO COMMENCING CONSTRUCTION. NO REPRESENTATION IS MADE THAT ALL EXISTING UTILITIES ARE SHOWN HEREON. THE ENGINEER ASSUMES NO RESPONSIBILITY FOR UTILITIES NOT SHOWN OR UTILITIES NOT SHOWN IN THEIR PROPER LOCATION. CONTRACTOR TO NOTIFY ENGINEER OF ANY CHANGES OR DISCREPANCIES.

Call before you Dig  
 Avoid cutting or underground utility lines costly.

Call before you Overhead  
 1-702-227-2929  
 Nevada Power  
 Environment and Safety  
 Services Department

Call before you Dig  
 Avoid cutting or underground utility lines costly.

Call before you Dig  
 1-800-227-2600  
 CLARK COUNTY TRAFFIC OPERATIONS  
 1-702-455-7544



**FOR REVIEW ONLY**

REV	DESCRIPTION	BY	APPD	DATE

DATE: May 17, 2014  
 HORIZ. SCALE: 1" = 30'  
 VERT. SCALE: 1" = 5'  
 DRAWN BY: CS  
 DESIGNED BY: CR  
 CHECKED BY: JLL  
 APPROVED BY: JLL  
 PROJECT #: 3110.0017

**TOLL SOUTH LV, LLC**  
 1140 TOWN CENTER DRIVE SUITE 250  
 LAS VEGAS, NV 89144  
 PHONE: 702-243-9800 FAX: 702-243-9810

**RCI Engineering**  
 4325 Dean Martin Drive Suite 300, Las Vegas, NV 89103  
 PH702.455.0800 FAX702.453.0801

MONTECITO AT SUMMERLIN VILLAGE 23B PARCEL X  
 A SINGLE FAMILY RESIDENTIAL SUBDIVISION  
 THREE LINE PLAN & PROFILE - TEMPESTAD AVE  
 STA: 21+50.00 - 24+90.00

CITY OF LAS VEGAS

5/22/2014

**P-9**  
 SHEET 29 OF 39  
 CLV DRAWING NUMBER  
 1053318  
 1074797

CLV PROJECT

NEVADA  
 JOHN I. LAND  
 Exp. 12/31/2014  
 CIVIL ENGINEER  
 No. 16441

0:\3110\_Toll\0017\_V23A\_Parcel\_X\_Civil\_P3\5008\_P07.dwg scribbled 5/17/14 3:36pm