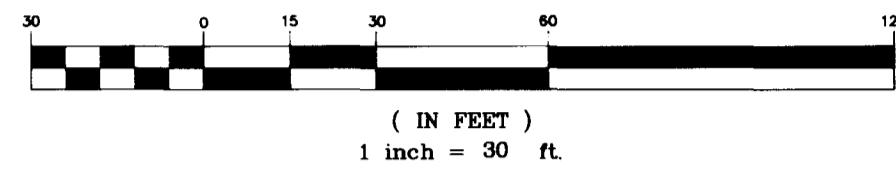


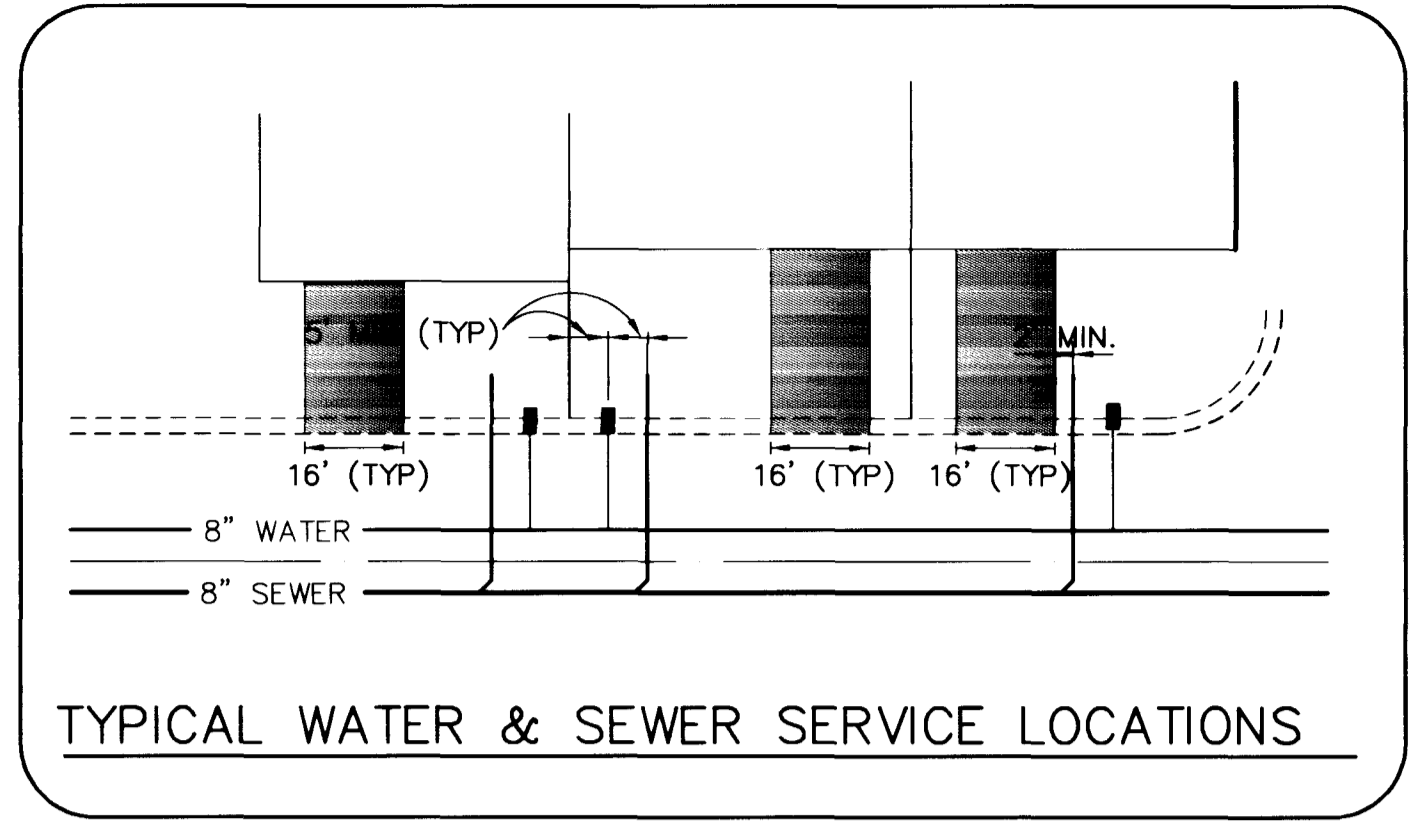
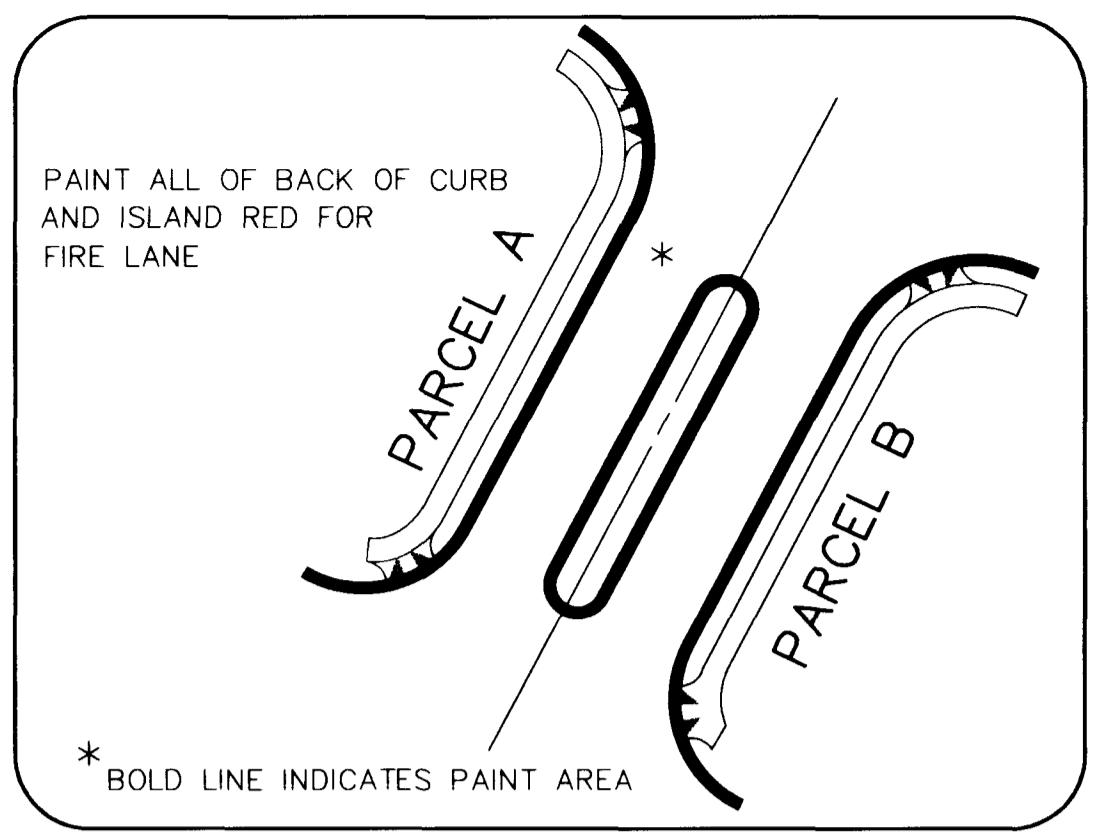
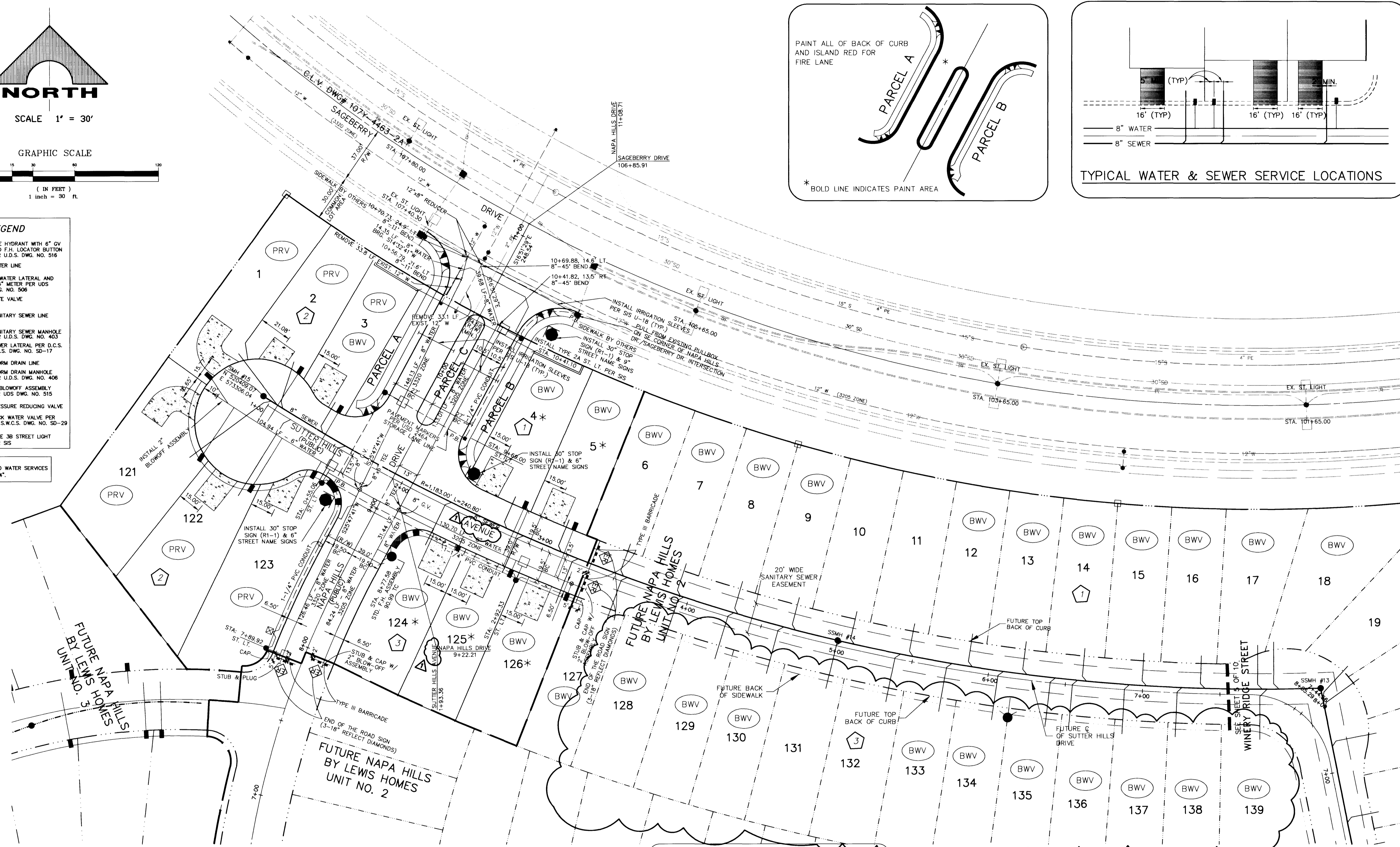
SCALE 1" = 30'

GRAPHIC SCALE



- LEGEND**
- FIRE HYDRANT WITH 6" GV AND F.H. LOCATOR BUTTON PER U.D.S. DWG. NO. 516
 - WATER LINE
 - 1" WATER LATERAL AND 3/4" METER PER UDS DWG. NO. 506
 - GATE VALVE
 - SANITARY SEWER LINE
 - SANITARY SEWER MANHOLE PER U.D.S. DWG. NO. 403
 - SEWER LATERAL PER D.C.S. W.C.S. DWG. NO. 50-17
 - STORM DRAIN LINE
 - STORM DRAIN MANHOLE PER U.D.S. DWG. NO. 406
 - 2" BLOWOFF ASSEMBLY PER UDS DWG. NO. 515
 - PRESSURE REDUCING VALVE
 - BACK WATER VALVE PER D.C.S. W.C.S. DWG. NO. 50-29
 - TYPE 3B STREET LIGHT PER SIS

* ALL INDICATED WATER SERVICES SHALL BE 3/4".



- 125 AMP 240V PAD MOUNT SERVICE WITH
- 2 2 POLE 60 AMP CIRCUIT BREAKER/S
 - 2 1 POLE 15 AMP CIRCUIT BREAKER/S
 - 1 POLE 40 AMP CIRCUIT BREAKER/S
 - 1 POLE 60 AMP CIRCUIT BREAKER/S
 - 2 POLE 60 AMP CONTACTOR/S
 - 1 BY-PASS SWITCH PER CONTACTOR

BENCHMARKS
 G.C. WALLACE PROJECT BENCHMARK NO. 107, A 2" BRASS DISK IN CONCRETE, LYING SOUTH 44°00'38" EAST, 641.6' FROM THE INTERSECTION OF HUALAPAI WAY AND TOWN CENTER DRIVE.
 ELEVATION = 2877.96
 CITY OF LAS VEGAS BENCHMARK
 0LV001954 RIVET & PLATE IN TOP OF CURB NW SIDE OF TOWN CENTER DR. AND SOUTH CIRCLE ISLAND.
 2725.923 NGVD 1929 DATUM
 2728.37 NAVD 1988 DATUM (831.6074 M)
 2726.19 SUMMERLIN DATUM * PROJECT DATUM
 SUMMERLIN DATUM = NAVD - 2.18'

BASIS OF BEARINGS
 SOUTH 11°16'20" EAST, BEING THE BEARING OF THE CENTERLINE OF PAVILION CENTER DRIVE AS SHOWN BY "THE ARBORS AT SUMMERLIN VILLAGE 11/12 UNIT 2A" ON FILE IN BOOK 75, PAGE 75 OF PLATS IN THE CLARK COUNTY RECORDER'S OFFICE CLARK COUNTY, NEVADA.



APPROVALS

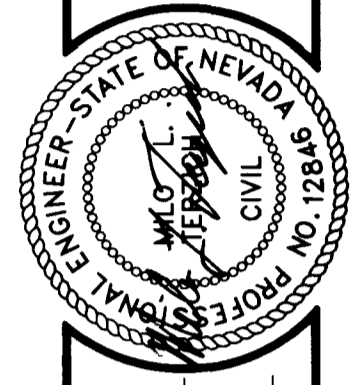
1st approval 5-14-98
 2nd approval 5-28-98

[Signature] 6-26-98
 LAS VEGAS VALLEY WATER DISTRICT DATE

AVOID CUTTING UNDERGROUND UTILITY LINES. IT'S COSTLY.
Call before you Dig.
 1-800-227-2600
 UNDERGROUND SERVICE (USA)

THIS PROPERTY MAY HAVE STATIC WATER PRESSURE IN EXCESS OF 80 PSI. THE UNIFORM PLUMBING CODE REQUIRES THAT INDIVIDUAL, ON-SITE (PRIVATE), PRESSURE REDUCING VALVES BE INSTALLED WHENEVER THE PRESSURE EXCEEDS 80 PSI. PRV'S ARE THE DEVELOPER'S RESPONSIBILITY AND WILL NOT BE INSPECTED OR INCLUDED IN THE ACCEPTANCE OF L.V.V.W.D. FACILITIES.

FIRE HYDRANTS INSTALLATION
 FIRE HYDRANT(S) TO BE INSTALLED IN ACCORDANCE WITH THE UOAS STANDARD PLATE NO. 7



G.C. WALLACE, INC.
 Engineering/Architecture
 1535 SOUTH SANDY BLVD./LAS VEGAS, NEVADA 89106
 PHONE (702) 363-1800

NAPA HILLS BY LEWIS HOMES UNIT 1
UTILITY PLAN I

SHEET **4**
 OF 10 SHEETS

