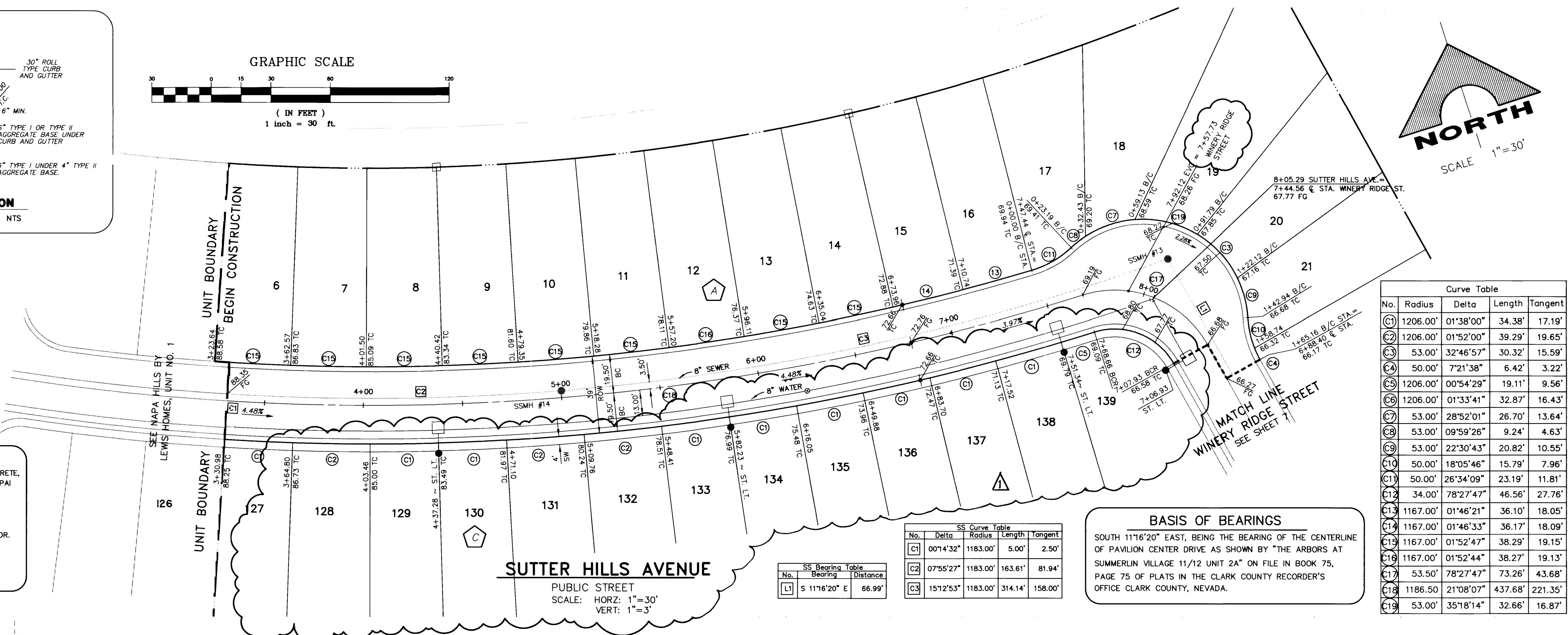


AVOID CUTTING UNDERGROUND UTILITY LINES. IT'S COSTLY.
Call before you Dig.
 1-800-227-2600
 UNDERGROUND SERVICE ALERT (USA)

BENCHMARKS
 G.C. WALLACE PROJECT BENCHMARK NO. 107, A 2" BRASS DISK IN CONCRETE, LYING SOUTH 44°00'38" EAST, 641.6' FROM THE INTERSECTION OF HUALAPAI WAY AND TOWN CENTER DRIVE.
 ELEVATION = 2877.96
 CITY OF LAS VEGAS BENCHMARK
 OLVD01954 RIVET & PLATE IN TOP OF CURB NW SIDE OF TOWN CENTER DR. AND SOUTH CIRCLE ISLAND.
 2725.923 NAVD 1929 DATUM
 2728.37 NAVD 1988 DATUM (831.6074 M)
 2726.19 SUMMERLIN DATUM * PROJECT DATUM
 SUMMERLIN DATUM = NAVD - 2.18'



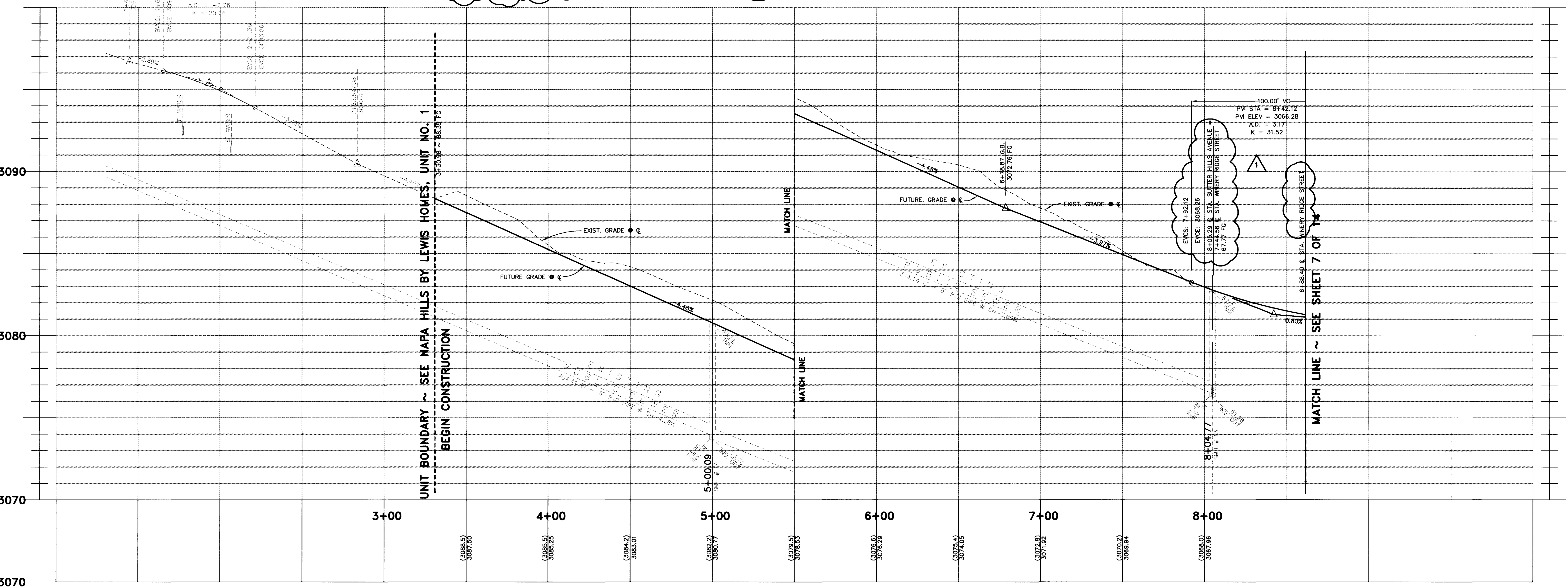
Curve Table

No.	Radius	Delta	Length	Tangent
(1)	1206.00'	01°38'00"	34.38'	17.19'
(2)	1206.00'	01°52'00"	39.29'	19.65'
(3)	53.00'	32°46'57"	30.32'	15.59'
(4)	50.00'	7°21'38"	6.42'	3.22'
(5)	1206.00'	00°54'29"	19.11'	9.56'
(6)	1206.00'	01°33'41"	32.87'	16.43'
(7)	53.00'	28°52'01"	26.70'	13.64'
(8)	53.00'	09°59'26"	9.24'	4.63'
(9)	53.00'	22°30'43"	20.82'	10.55'
(10)	50.00'	18°05'46"	15.79'	7.96'
(11)	50.00'	26°34'09"	23.19'	11.81'
(12)	34.00'	78°27'47"	46.56'	27.76'
(13)	1167.00'	01°46'21"	36.10'	18.05'
(14)	1167.00'	01°46'33"	36.17'	18.09'
(15)	1167.00'	01°52'47"	38.29'	19.15'
(16)	1167.00'	01°52'44"	38.27'	19.13'
(17)	53.50'	78°27'47"	73.26'	43.68'
(18)	1186.50'	21°08'07"	437.68'	221.35'
(19)	53.00'	35°18'14"	32.66'	16.87'

SS Curve Table

No.	Delta	Radius	Length	Tangent
(1)	00°14'32"	1183.00'	5.00'	2.50'
(2)	07°55'27"	1183.00'	163.61'	81.94'
(3)	15°12'53"	1183.00'	314.14'	158.00'

BASIS OF BEARINGS
 SOUTH 11°16'20" EAST, BEING THE BEARING OF THE CENTERLINE OF PAVILION CENTER DRIVE AS SHOWN BY "THE ARBORS AT SUMMERLIN VILLAGE 11/12 UNIT 2A" ON FILE IN BOOK 75, PAGE 75 OF PLATS IN THE CLARK COUNTY RECORDER'S OFFICE CLARK COUNTY, NEVADA.



RECOMMENDED DATE: 5/27/18
 DATE: 5/27/18
 P.E. NO.:
G.C. WALLACE, INC.
 Engineering/Architecture
 1855 SOUTH SANDY BLVD./SUITE 1000 LAS VEGAS, NEVADA 89102
 PHONE (702) 363-1120

NAPA HILLS BY LEWIS HOMES UNIT NO. 2
SUTTER HILLS AVENUE
PLAN & PROFILE
3+30.98 TO 8+05.29 & 1+00 TO 2+38.84

SHEET **5**
 OF 14 SHEETS

JOB NO. 5543.921

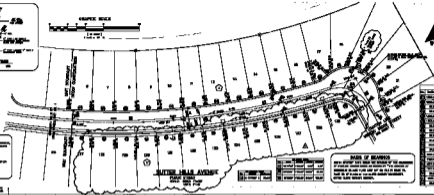
8560

107Y-4560-2

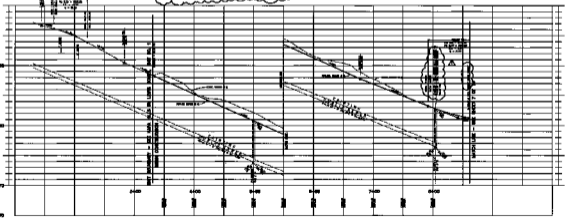


Call before you Dig.
1-800-82-8888
www.callbeforeyoudig.com

NOTES:
1. ALL WORK SHALL BE IN ACCORDANCE WITH THE CITY OF CHICAGO SPECIFICATIONS FOR THE CONSTRUCTION OF STREETS AND HIGHWAYS.
2. THE CONTRACTOR SHALL BE RESPONSIBLE FOR OBTAINING ALL NECESSARY PERMITS FROM THE CITY OF CHICAGO.
3. THE CONTRACTOR SHALL MAINTAIN ACCESS TO ALL ADJACENT PROPERTIES AT ALL TIMES.
4. THE CONTRACTOR SHALL BE RESPONSIBLE FOR THE PROTECTION OF ALL UTILITIES AND STRUCTURES TO REMAIN.
5. THE CONTRACTOR SHALL MAINTAIN ADEQUATE TRAFFIC CONTROL THROUGHOUT THE PROJECT.
6. THE CONTRACTOR SHALL BE RESPONSIBLE FOR THE REMOVAL OF ALL DEBRIS AND EXCESS MATERIAL FROM THE PROJECT SITE.
7. THE CONTRACTOR SHALL MAINTAIN A CLEAN AND SAFE WORK SITE AT ALL TIMES.
8. THE CONTRACTOR SHALL BE RESPONSIBLE FOR THE PROTECTION OF ALL TREES AND LANDSCAPE FEATURES TO REMAIN.
9. THE CONTRACTOR SHALL MAINTAIN ADEQUATE DRAINAGE THROUGHOUT THE PROJECT.
10. THE CONTRACTOR SHALL BE RESPONSIBLE FOR THE PROTECTION OF ALL ADJACENT PROPERTIES FROM DAMAGE.
11. THE CONTRACTOR SHALL MAINTAIN ADEQUATE ACCESS TO ALL ADJACENT PROPERTIES AT ALL TIMES.
12. THE CONTRACTOR SHALL BE RESPONSIBLE FOR THE PROTECTION OF ALL UTILITIES AND STRUCTURES TO REMAIN.
13. THE CONTRACTOR SHALL MAINTAIN ADEQUATE TRAFFIC CONTROL THROUGHOUT THE PROJECT.
14. THE CONTRACTOR SHALL BE RESPONSIBLE FOR THE REMOVAL OF ALL DEBRIS AND EXCESS MATERIAL FROM THE PROJECT SITE.
15. THE CONTRACTOR SHALL MAINTAIN A CLEAN AND SAFE WORK SITE AT ALL TIMES.
16. THE CONTRACTOR SHALL BE RESPONSIBLE FOR THE PROTECTION OF ALL TREES AND LANDSCAPE FEATURES TO REMAIN.
17. THE CONTRACTOR SHALL MAINTAIN ADEQUATE DRAINAGE THROUGHOUT THE PROJECT.
18. THE CONTRACTOR SHALL BE RESPONSIBLE FOR THE PROTECTION OF ALL ADJACENT PROPERTIES FROM DAMAGE.
19. THE CONTRACTOR SHALL MAINTAIN ADEQUATE ACCESS TO ALL ADJACENT PROPERTIES AT ALL TIMES.
20. THE CONTRACTOR SHALL BE RESPONSIBLE FOR THE PROTECTION OF ALL UTILITIES AND STRUCTURES TO REMAIN.



LINE NO.	TYPE	DEPTH (FEET)	MARKER
1	WATER	4.0	RED
2	SEWER	4.0	RED
3	STREET LIGHT	15.0	RED
4	STREET LIGHT	15.0	RED
5	STREET LIGHT	15.0	RED
6	STREET LIGHT	15.0	RED
7	STREET LIGHT	15.0	RED
8	STREET LIGHT	15.0	RED
9	STREET LIGHT	15.0	RED
10	STREET LIGHT	15.0	RED
11	STREET LIGHT	15.0	RED
12	STREET LIGHT	15.0	RED
13	STREET LIGHT	15.0	RED
14	STREET LIGHT	15.0	RED
15	STREET LIGHT	15.0	RED
16	STREET LIGHT	15.0	RED
17	STREET LIGHT	15.0	RED
18	STREET LIGHT	15.0	RED
19	STREET LIGHT	15.0	RED
20	STREET LIGHT	15.0	RED
21	STREET LIGHT	15.0	RED
22	STREET LIGHT	15.0	RED
23	STREET LIGHT	15.0	RED
24	STREET LIGHT	15.0	RED
25	STREET LIGHT	15.0	RED
26	STREET LIGHT	15.0	RED
27	STREET LIGHT	15.0	RED
28	STREET LIGHT	15.0	RED
29	STREET LIGHT	15.0	RED
30	STREET LIGHT	15.0	RED
31	STREET LIGHT	15.0	RED
32	STREET LIGHT	15.0	RED
33	STREET LIGHT	15.0	RED
34	STREET LIGHT	15.0	RED
35	STREET LIGHT	15.0	RED
36	STREET LIGHT	15.0	RED
37	STREET LIGHT	15.0	RED
38	STREET LIGHT	15.0	RED
39	STREET LIGHT	15.0	RED
40	STREET LIGHT	15.0	RED
41	STREET LIGHT	15.0	RED
42	STREET LIGHT	15.0	RED
43	STREET LIGHT	15.0	RED
44	STREET LIGHT	15.0	RED
45	STREET LIGHT	15.0	RED
46	STREET LIGHT	15.0	RED
47	STREET LIGHT	15.0	RED
48	STREET LIGHT	15.0	RED
49	STREET LIGHT	15.0	RED
50	STREET LIGHT	15.0	RED
51	STREET LIGHT	15.0	RED
52	STREET LIGHT	15.0	RED
53	STREET LIGHT	15.0	RED
54	STREET LIGHT	15.0	RED
55	STREET LIGHT	15.0	RED
56	STREET LIGHT	15.0	RED
57	STREET LIGHT	15.0	RED
58	STREET LIGHT	15.0	RED
59	STREET LIGHT	15.0	RED
60	STREET LIGHT	15.0	RED
61	STREET LIGHT	15.0	RED
62	STREET LIGHT	15.0	RED
63	STREET LIGHT	15.0	RED
64	STREET LIGHT	15.0	RED
65	STREET LIGHT	15.0	RED
66	STREET LIGHT	15.0	RED
67	STREET LIGHT	15.0	RED
68	STREET LIGHT	15.0	RED
69	STREET LIGHT	15.0	RED
70	STREET LIGHT	15.0	RED
71	STREET LIGHT	15.0	RED
72	STREET LIGHT	15.0	RED
73	STREET LIGHT	15.0	RED
74	STREET LIGHT	15.0	RED
75	STREET LIGHT	15.0	RED
76	STREET LIGHT	15.0	RED
77	STREET LIGHT	15.0	RED
78	STREET LIGHT	15.0	RED
79	STREET LIGHT	15.0	RED
80	STREET LIGHT	15.0	RED
81	STREET LIGHT	15.0	RED
82	STREET LIGHT	15.0	RED
83	STREET LIGHT	15.0	RED
84	STREET LIGHT	15.0	RED
85	STREET LIGHT	15.0	RED
86	STREET LIGHT	15.0	RED
87	STREET LIGHT	15.0	RED
88	STREET LIGHT	15.0	RED
89	STREET LIGHT	15.0	RED
90	STREET LIGHT	15.0	RED
91	STREET LIGHT	15.0	RED
92	STREET LIGHT	15.0	RED
93	STREET LIGHT	15.0	RED
94	STREET LIGHT	15.0	RED
95	STREET LIGHT	15.0	RED
96	STREET LIGHT	15.0	RED
97	STREET LIGHT	15.0	RED
98	STREET LIGHT	15.0	RED
99	STREET LIGHT	15.0	RED
100	STREET LIGHT	15.0	RED



U.S. MULLANEY INC.

 147-440-1