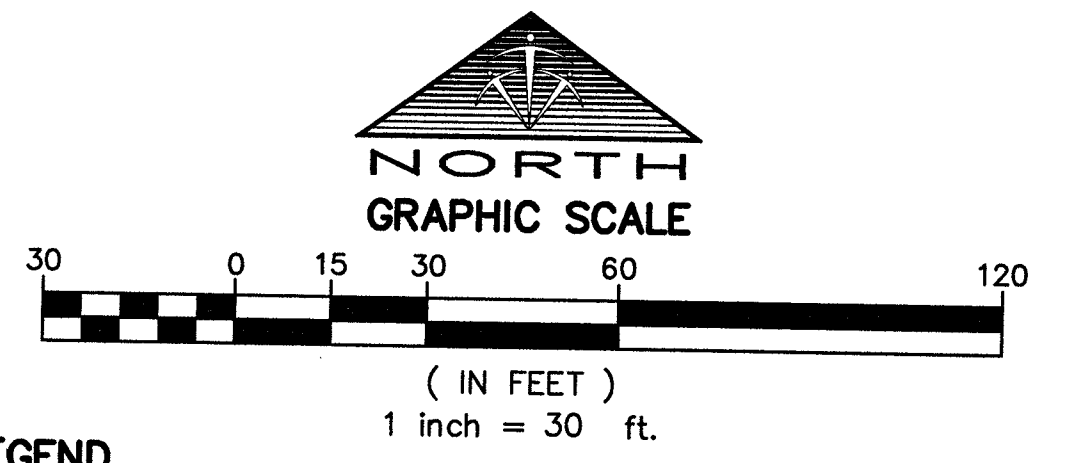


MONUMENT TIE MAP FRANKLIN PARK AT PROVIDENCE II - PHASE 3 A COMMON INTEREST COMMUNITY

AS SHOWN ON THAT CERTAIN MAP ON FILE IN THE CLARK COUNTY RECORDER'S OFFICE IN BOOK 149, PAGE 17 OF PLATS, SITUATE IN THE
SOUTHWEST QUARTER (SW 1/4) OF THE SOUTHWEST QUARTER (SW 1/4) OF SECTION 13, TOWNSHIP 19 SOUTH, RANGE 59 EAST, M.D.M.,
CITY OF LAS VEGAS, CLARK COUNTY, NEVADA.



LEGEND

- SUBDIVISION BOUNDARY LINE
- ALIQUOT LINE
- SECTION LINE
- RIGHT-OF-WAY LINE
- STREET CENTERLINE
- ASSESSOR'S PARCEL LINE
- MONUMENT TIE LINE
- MATCHLINE
- FOUND MONUMENT AS DESCRIBED
- FOUND TYPE III MONUMENT PER BOOK 146, PAGE 80 OF PLATS
- SET 5/8" REBAR AND 1-1/2" ALUMINUM CAP STAMPED "PLS 14414" UNLESS OTHERWISE NOTED
- SET TYPE IV REFERENCE MONUMENT STAMPED "PLS 14414" UNLESS OTHERWISE NOTED
- LOT NUMBER
- CURVE SEGMENT
- LINE SEGMENT
- PRIVATE STREET PER FILE 149, PAGE 17 OF PLATS
- CLARK COUNTY OFFICIAL RECORD
- RIGHT-OF-WAY
- CLARK COUNTY ASSESSOR'S PARCEL NUMBER

BASIS OF BEARINGS

NORTH 00°55'58" WEST BEING THE BEARING OF THE WEST LINE OF THE SOUTHWEST QUARTER (SW 1/4) OF THE SOUTHWEST QUARTER (SW 1/4) OF SECTION 13, TOWNSHIP 19 SOUTH, RANGE 59 EAST, M.D.M., CITY OF LAS VEGAS, CLARK COUNTY, NEVADA AS SHOWN ON THAT CERTAIN MAP ON FILE IN THE CLARK COUNTY'S RECORDER'S OFFICE IN BOOK 149, PAGE 17 OF PLATS.

CURVE TABLE				
CURVE	DELTA	RADIUS	LENGTH	TANGENT
C6	23°33'41"	218.50'	89.85'	45.57'
C7	23°33'41"	100.00'	41.12'	20.86'
C8	13°13'11"	250.00'	57.68'	28.97'

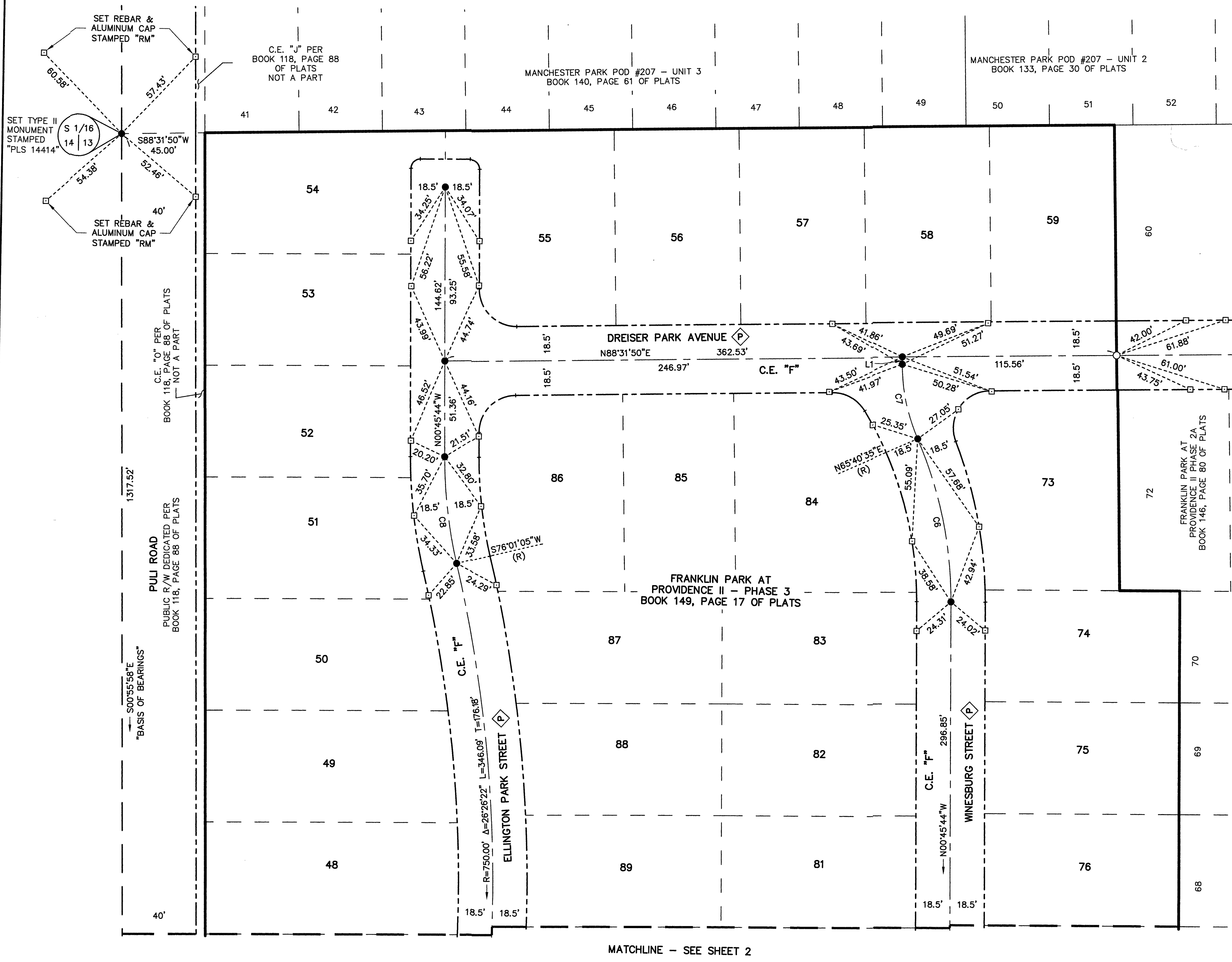
LINE TABLE		
LINE	BEARING	LENGTH
L1	N00°45'44"W	3.93'

SURVEYOR'S CERTIFICATE

I, MICHAEL A. LATHAN, A PROFESSIONAL LAND SURVEYOR LICENSED IN THE STATE OF NEVADA, DO HEREBY CERTIFY THAT THE MONUMENTS HAVE BEEN SET ACCORDING TO THE RECORDED FINAL MAPS FOR THIS SUBDIVISION AND THE TIE DISTANCES ESTABLISHED AS SHOWN HEREON. THIS SURVEY WAS COMPLETED ON AUGUST 23, 2018.



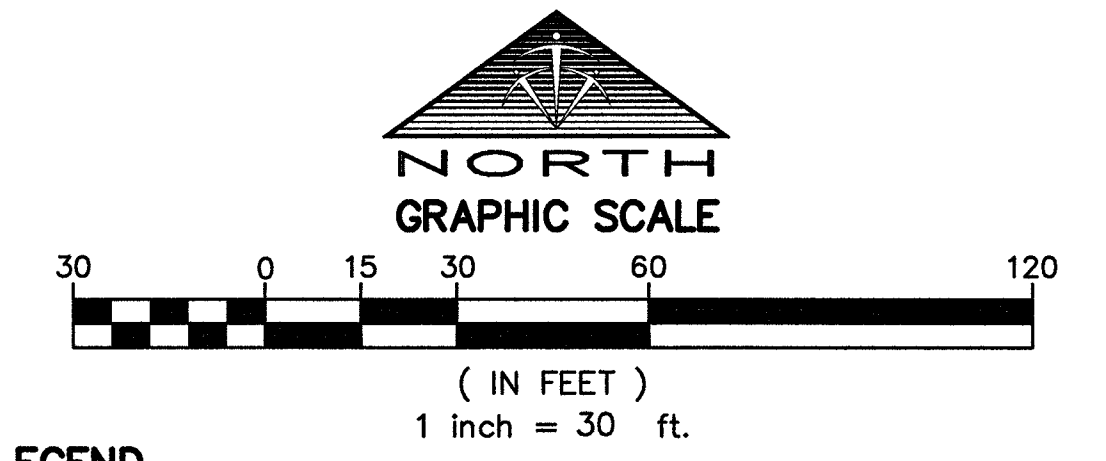
8/28/2018
MICHAEL A. LATHAN
PROFESSIONAL LAND SURVEYOR
NEVADA LICENSE NO. 14414



MONUMENT TIE MAP FRANKLIN PARK AT PROVIDENCE II - PHASE 3

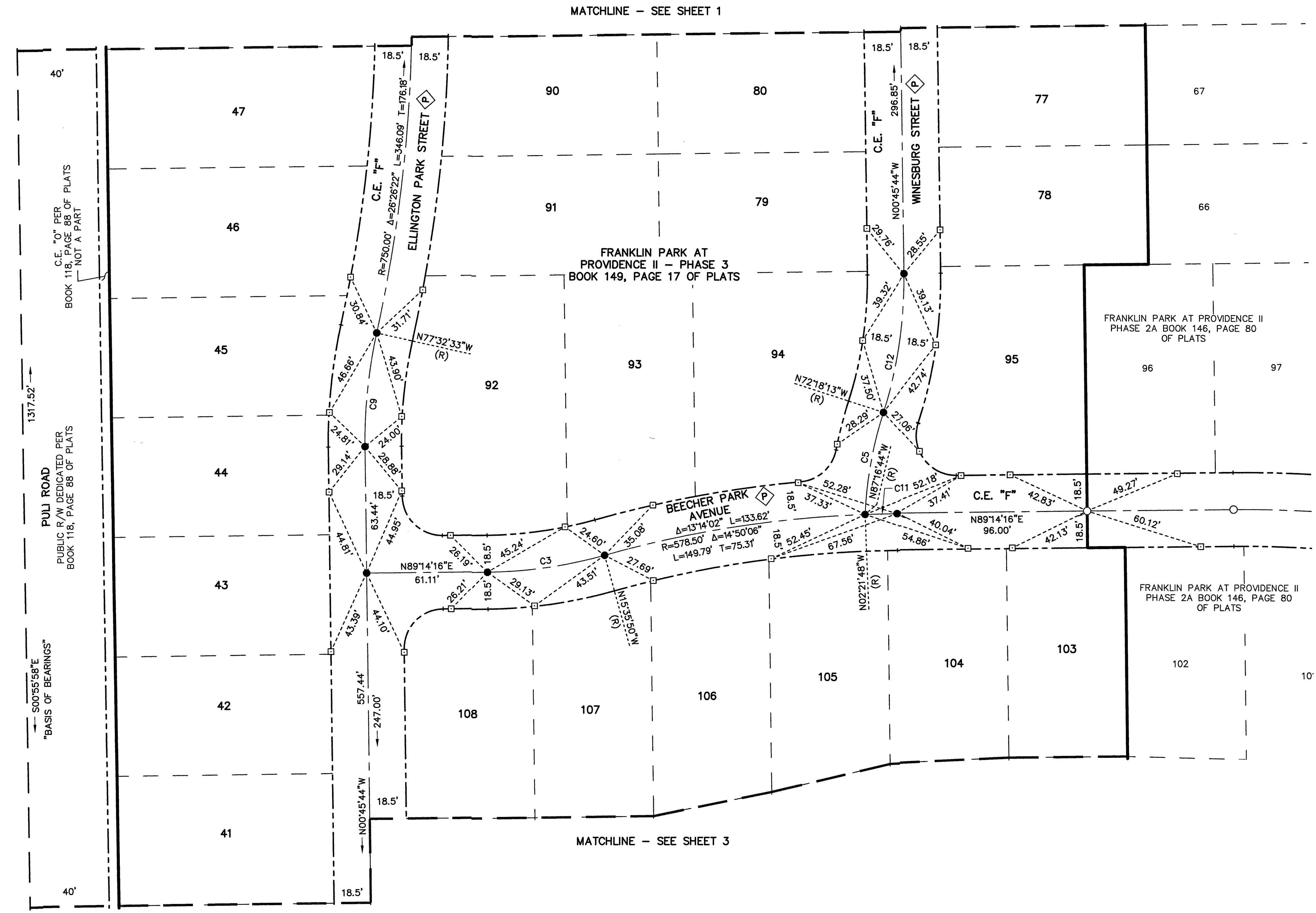
A COMMON INTEREST COMMUNITY

AS SHOWN ON THAT CERTAIN MAP ON FILE IN THE CLARK COUNTY RECORDER'S OFFICE IN BOOK 149, PAGE 17 OF PLATS, SITUATE IN THE
SOUTHWEST QUARTER (SW 1/4) OF THE SOUTHWEST QUARTER (SW 1/4) OF SECTION 13, TOWNSHIP 19 SOUTH, RANGE 59 EAST, M.D.M.,
CITY OF LAS VEGAS, CLARK COUNTY, NEVADA.



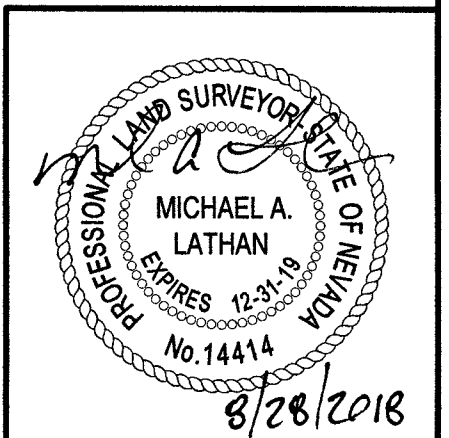
- LEGEND**
- SUBDIVISION BOUNDARY LINE
 - ALIQUOT LINE
 - SECTION LINE
 - RIGHT-OF-WAY LINE
 - STREET CENTERLINE
 - ASSESSOR'S PARCEL LINE
 - MONUMENT TIE LINE
 - MATCHLINE
 - FOUND MONUMENT AS DESCRIBED
 - FOUND TYPE III MONUMENT PER BOOK 146, PAGE 80 OF PLATS
 - SET 5/8" REBAR AND 1-1/2" ALUMINUM CAP STAMPED "PLS 14414" UNLESS OTHERWISE NOTED
 - SET TYPE IV REFERENCE MONUMENT STAMPED "PLS 14414" UNLESS OTHERWISE NOTED
 - LOT NUMBER
 - CURVE SEGMENT
 - LINE SEGMENT
 - PRIVATE STREET PER FILE 149, PAGE 17 OF PLATS
 - CLARK COUNTY OFFICIAL RECORD
 - RIGHT-OF-WAY
 - CLARK COUNTY ASSESSOR'S PARCEL NUMBER

CURVE TABLE				
CURVE	DELTA	RADIUS	LENGTH	TANGENT
C3	14°50'06"	231.50'	59.94'	30.14'
C5	14°58'32"	200.00'	52.27'	26.29'
C9	13°13'11"	250.00'	57.68'	28.97'
C11	1°36'04"	578.50'	16.17'	8.08'
C12	18°27'31"	218.50'	70.39'	35.50'



JOB# 20712.0003

TRI-CORE
SURVEYING, LLC
6781 WEST CHARLESTON BLVD.
LAS VEGAS, NEVADA 89146
TEL (702) 821-1554 FAX (702) 870-4378

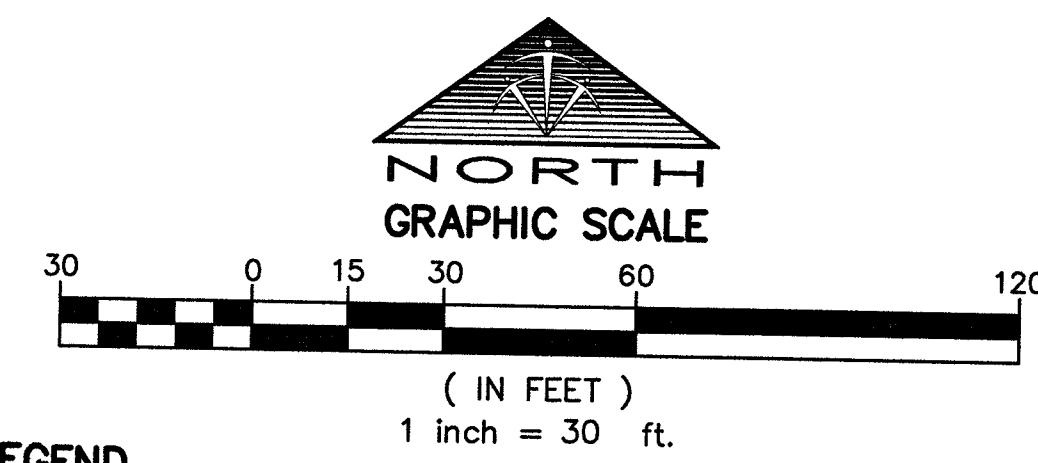


RD
SHEET 2 OF 3

MONUMENT TIE MAP FRANKLIN PARK AT PROVIDENCE II - PHASE 3

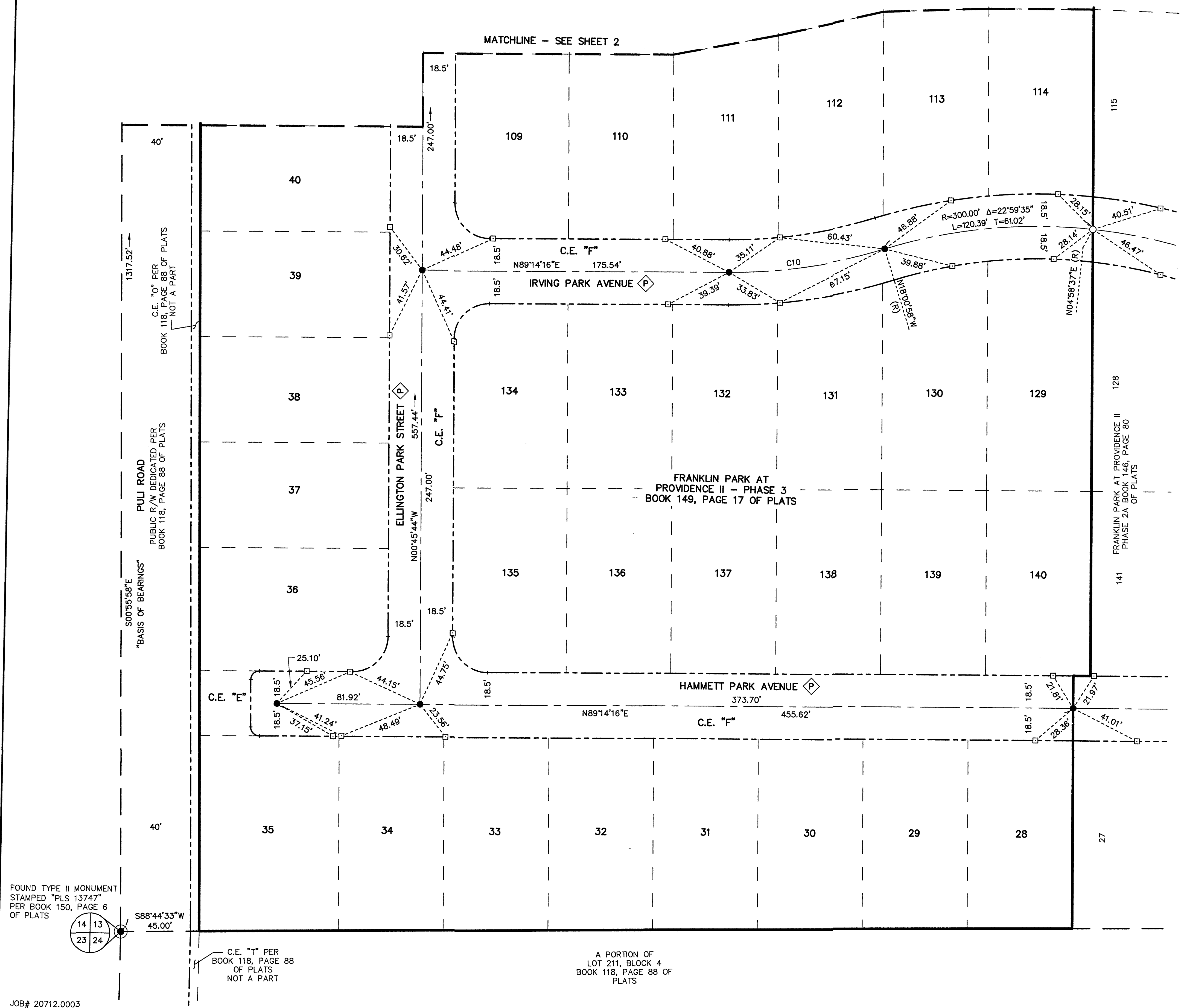
A COMMON INTEREST COMMUNITY

AS SHOWN ON THAT CERTAIN MAP ON FILE IN THE CLARK COUNTY RECORDER'S OFFICE IN BOOK 149, PAGE 17 OF PLATS, SITUATE IN THE SOUTHWEST QUARTER (SW 1/4) OF THE SOUTHWEST QUARTER (SW 1/4) OF SECTION 13, TOWNSHIP 19 SOUTH, RANGE 59 EAST, M.D.M., CITY OF LAS VEGAS, CLARK COUNTY, NEVADA.



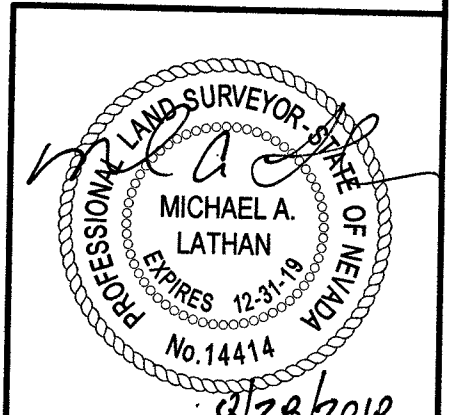
- LEGEND**
- SUBDIVISION BOUNDARY LINE
 - ALIQUOT LINE
 - SECTION LINE
 - RIGHT-OF-WAY LINE
 - STREET CENTERLINE
 - ASSESSOR'S PARCEL LINE
 - MONUMENT TIE LINE
 - MATCHLINE
 - FOUND MONUMENT AS DESCRIBED
 - FOUND TYPE III MONUMENT PER BOOK 146, PAGE 80 OF PLATS
 - SET 5/8" REBAR AND 1-1/2" ALUMINUM CAP STAMPED "PLS 14414" UNLESS OTHERWISE NOTED
 - SET TYPE IV REFERENCE MONUMENT STAMPED "PLS 14414" UNLESS OTHERWISE NOTED
 - LOT NUMBER
 - CURVE SEGMENT
 - LINE SEGMENT
 - PRIVATE STREET PER FILE 149, PAGE 17 OF PLATS
 - CLARK COUNTY OFFICIAL RECORD
 - RIGHT-OF-WAY
 - CLARK COUNTY ASSESSOR'S PARCEL NUMBER

CURVE TABLE				
CURVE	DELTA	RADIUS	LENGTH	TANGENT
C10	17°15'14"	300.00'	90.34'	45.51'



JOB# 20712.0003

TRI-CORE
SURVEYING, LLC
6781 WEST CHARLESTON BLVD.
LAS VEGAS, NEVADA 89146
TEL (702) 821-1554 FAX (702) 870-4378



RD
SHEET 3 OF 3