

# FINAL MAP OF FALLBROOK

(A COMMON INTEREST COMMUNITY SUBDIVISION)

TOTAL LOTS: 156 LOTS  
TOTAL ACREAGE: 22.73 ACRES

ALL OF LOT 2 AND COMMON LOT "B" OF BOOK 78, OF PLATS, PAGE 62, OFFICIAL RECORDS, IN THE SOUTHEAST QUARTER (SE1/4) OF SECTION 23 AND IN THE NORTHEAST QUARTER (NE 1/4) OF SECTION 26, TOWNSHIP 20 SOUTH, RANGE 59 EAST, M.D.M. CITY OF LAS VEGAS, CLARK COUNTY, NEVADA.

**BASIS OF BEARINGS:**  
BEING THE CENTERLINE OF LAUREL GLEN DRIVE, AS SHOWN ON THE MAP OF THE ARBORS AT SUMMERLIN VILLAGE 11/12, UNIT NO. 3 A-B, AS SHOWN ON THE MAP IN BOOK 78, OF PLATS, PAGE 62, OFFICIAL RECORDS OF CLARK COUNTY, NEVADA, WHICH BEARS NORTH 71°19'54" EAST.

**REFERENCES:**

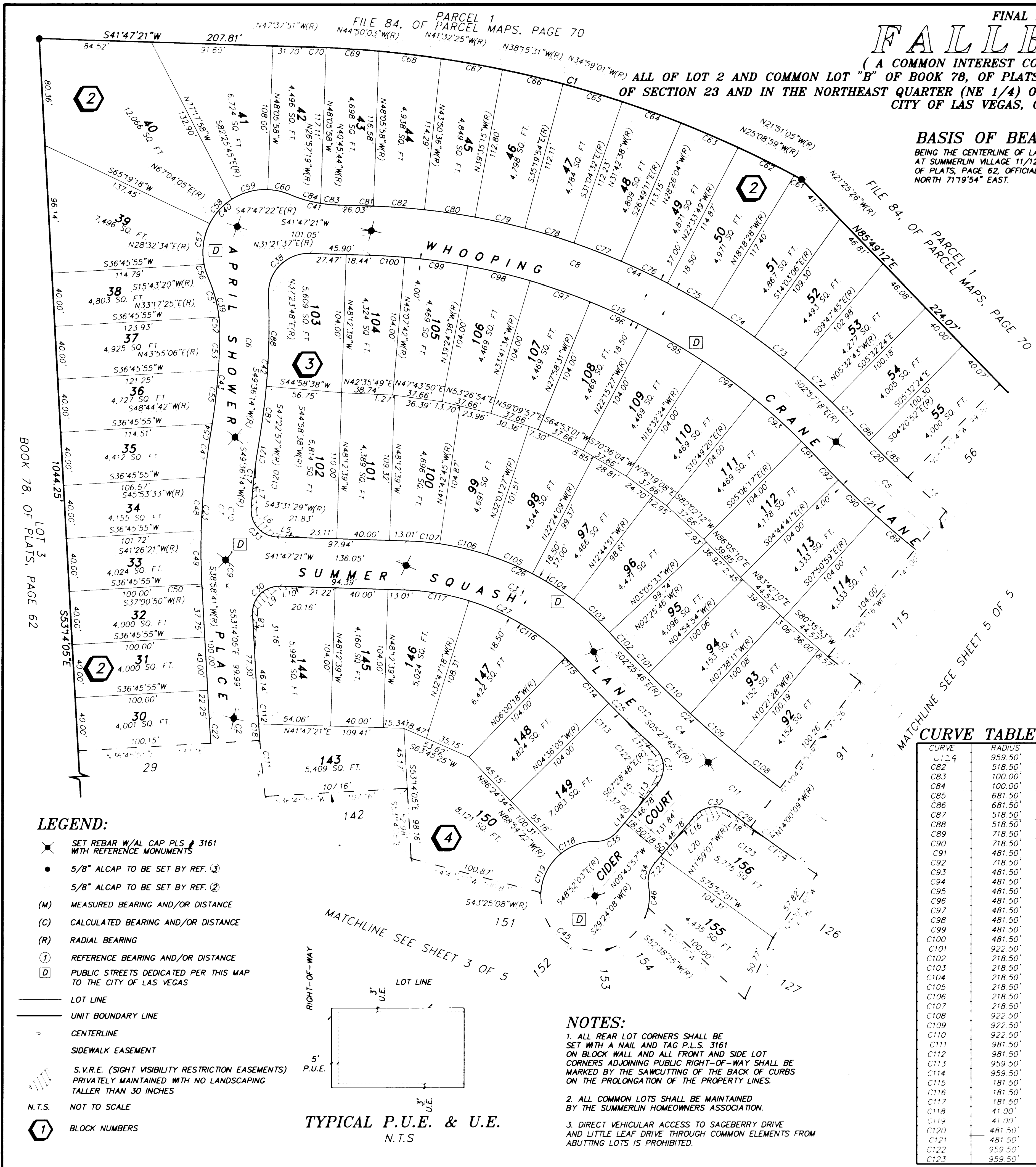
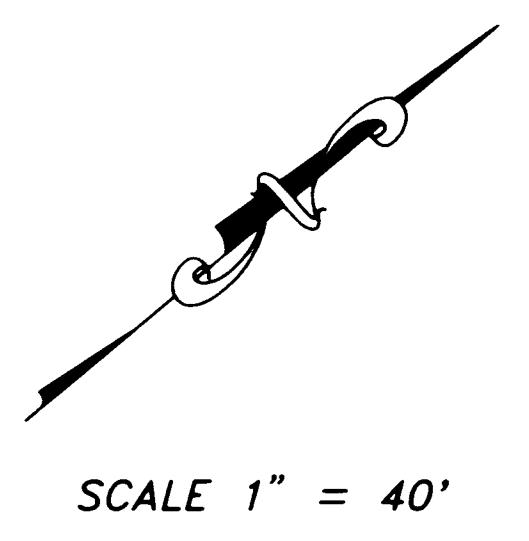
- ① PARCEL MAP FILE 84, PAGE 50
- ② PLATS BOOK 76, PAGE 92
- ③ PLATS BOOK 78, PAGE 62

**NUMBERED COURSES:**

LINE	DIRECTION	DISTANCE
L1	N77°29'35"E	30.49'
L2	S74°54'30"W	27.61'
L3	N25°21'43"W	50.77'
L4	N48°30'47"E	24.82'
L5	S87°39'25"W	17.91'
L6	N52°15'23"W	37.29'
L7	N46°44'12"W	35.02'
L8	N05°43'22"W	19.58'
L9	N33°35'19"E	23.47'
L10	S89°22'22"W	38.17'
L11	N53°36'23"W	16.57'
L12	S17°50'06"E	26.77'
L13	S09°43'57"E	24.20'
L14	S09°43'57"E	22.58'
L15	S01°37'48"E	26.77'
L16	S34°08'28"W	16.57'
L17	N71°09'43"E	38.17'
L18	S09°43'57"E	16.98'
L19	N09°43'57"W	22.58'

**CURVE TABLE:**

CURVE	RADIUS	LENGTH	TANGENT	DELTA
C1	820.00'	383.37'	195.25'	26°47'13"
C2	1000.00'	17.75'	8.88'	01°01'02"
C3	200.00'	159.81'	84.45'	45°46'53"
C4	941.00'	174.90'	87.70'	10°38'59"
C5	700.00'	97.73'	48.95'	07°59'58"
C6	500.00'	159.21'	80.28'	18°14'37"
C7	500.00'	112.04'	56.26'	12°50'21"
C8	500.00'	394.93'	208.42'	45°15'21"
C9	500.00'	19.32'	9.66'	02°12'48"
C10	500.00'	92.73'	46.50'	10°37'33"
C11	941.00'	54.96'	27.49'	03°20'47"
C12	941.00'	119.94'	60.05'	07°18'11"
C13	681.50'	38.52'	19.26'	03°14'18"
C14	959.50'	33.70'	16.85'	02°00'45"
C15	41.00'	122.21'	508.39'	170°46'43"
C16	981.50'	42.30'	21.15'	02°28'10"
C17	481.50'	51.09'	25.57'	06°04'45"
C18	981.50'	17.75'	8.88'	01°02'11"
C19	481.50'	380.32'	200.70'	45°15'21"
C20	681.50'	56.63'	28.33'	04°45'41"
C21	718.50'	100.32'	50.24'	07°59'58"
C22	1018.50'	17.75'	8.88'	00°59'55"
C23	518.50'	116.19'	58.34'	12°50'21"
C24	922.50'	171.47'	85.98'	10°38'59"
C25	959.50'	84.58'	42.32'	05°03'02"
C26	218.50'	174.59'	92.26'	45°46'53"
C27	181.50'	145.03'	76.63'	45°46'53"
C28	959.50'	18.32'	9.16'	01°05'38"
C29	20.00'	33.17'	21.84'	95°01'26"
C30	20.00'	30.63'	19.23'	87°44'51"
C31	20.00'	32.02'	20.62'	91°44'08"
C32	20.00'	17.76'	9.51'	50°51'55"
C33	20.00'	17.76'	9.51'	50°51'55"
C34	30.00'	49.42'	32.39'	94°23'33"
C35	100.00'	43.55'	22.13'	24°57'12"
C36	47.00'	112.65'	120.31'	137°19'20"
C37	100.00'	37.10'	18.76'	21°15'20"
C38	518.50'	110.47'	55.44'	12°12'26"
C39	481.50'	75.03'	37.59'	08°55'42"
C40	518.50'	409.54'	216.13'	45°15'21"
C41	41.00'	201.60'	33.36'	281°43'49"
C42	41.00'	16.63'	8.43'	23°14'17"
C43	518.50'	33.58'	16.80'	03°42'40"
C44	518.50'	40.30'	20.16'	04°27'13"
C45	518.50'	40.05'	20.03'	04°25'31"
C46	518.50'	2.25'	1.13'	00°14'57"
C47	100.00'	30.66'	15.45'	17°34'05"
C48	100.00'	12.89'	6.45'	07°23'07"
C49	481.50'	22.25'	13.63'	03°14'33"
C50	481.50'	7.20'	3.60'	00°51'26"
C51	481.50'	40.58'	20.30'	04°49'42"
C52	47.00'	10.52'	5.28'	12°49'14"
C53	47.00'	31.60'	16.42'	38°31'30"
C54	47.00'	25.02'	12.81'	30°30'10"
C55	47.00'	28.42'	14.66'	34°38'23"
C56	47.00'	17.09'	8.64'	20°50'03"
C57	820.00'	6.12'	3.06'	00°25'39"
C58	820.00'	47.20'	23.61'	03°17'54"
C59	820.00'	47.01'	23.51'	03°17'05"
C60	820.00'	46.89'	23.45'	03°16'35"
C61	820.00'	46.84'	23.43'	03°16'23"
C62	820.00'	46.87'	23.44'	03°16'29"
C63	820.00'	46.97'	23.49'	03°16'54"
C64	820.00'	47.14'	23.58'	03°17'38"
C65	820.00'	40.03'	20.02'	02°47'48"
C66	518.50'	23.44'	11.72'	02°35'29"
C67	518.50'	38.46'	19.24'	04°15'02"
C68	518.50'	38.51'	19.27'	04°15'21"
C69	518.50'	38.51'	19.27'	04°15'21"
C70	518.50'	38.51'	19.27'	04°15'21"
C71	518.50'	38.51'	19.27'	04°15'21"
C72	518.50'	38.51'	19.27'	04°15'21"
C73	518.50'	38.51'	19.27'	04°15'21"
C74	518.50'	38.51'	19.27'	04°15'21"
C75	518.50'	38.51'	19.27'	04°15'21"
C76	518.50'	38.51'	19.27'	04°15'21"
C77	518.50'	38.51'	19.27'	04°15'21"
C78	518.50'	38.51'	19.27'	04°15'21"
C79	518.50'	38.51'	19.27'	04°15'21"
C80	518.50'	38.51'	19.27'	04°15'21"
C81	518.50'	38.51'	19.27'	04°15'21"
C82	518.50'	38.51'	19.27'	04°15'21"
C83	518.50'	38.51'	19.27'	04°15'21"
C84	518.50'	38.51'	19.27'	04°15'21"
C85	518.50'	38.51'	19.27'	04°15'21"
C86	518.50'	38.51'	19.27'	04°15'21"
C87	518.50'	38.51'	19.27'	04°15'21"
C88	518.50'	38.51'	19.27'	04°15'21"
C89	518.50'	38.51'	19.27'	04°15'21"
C90	518.50'	38.51'	19.27'	04°15'21"
C91	518.50'	38.51'	19.27'	04°15'21"
C92	518.50'	38.51'	19.27'	04°15'21"
C93	518.50'	38.51'	19.27'	04°15'21"
C94	518.50'	38.51'	19.27'	04°15'21"
C95	518.50'	38.51'	19.27'	04°15'21"
C96	518.50'	38.51'	19.27'	04°15'21"
C97	518.50'	38.51'	19.27'	04°15'21"
C98	518.50'	38.51'	19.27'	04°15'21"
C99	518.50'	38.51'	19.27'	04°15'21"
C100	518.50'	38.51'	19.27'	04°15'21"
C101	518.50'	38.51'	19.27'	04°15'21"
C102	518.50'	38.51'	19.27'	04°15'21"
C103	518.50'	38.51'	19.27'	04°15'21"
C104	518.50'	38.51'	19.27'	04°15'21"
C105	518.50'	38.51'	19.27'	04°15'21"
C106	518.50'	38.51'	19.27'	04°15'21"
C107	518.50'	38.51'	19.27'	04°15'21"
C108	518.50'	38.51'	19.27'	04°15'21"
C109	518.50'	38.51'	19.27'	04°15'21"
C110	518.50'	38.51'	19.27'	04°15'21"
C111	518.50'	38.51'	19.27'	04°15'21"
C112	518.50'	38.51'	19.27'	04°15'21"
C113	518.50'	38.51'	19.27'	04°15'21"
C114	518.50'	38.51'	19.27'	04°15'21"
C115	518.50'	38.51'	19.27'	04°15'21"
C116	518.50'	38.51'	19.27'	04°15'21"
C117	518.50'	38.51'	19.27'	04°15'21"
C118	518.50'	38.51'	19.27'	04°15'21"
C119	518.50'	38.51'	19.27'	04°15'21"
C120	518.50'	38.51'	19.27'	04°15'21"
C121	518.50'	38.51'	19.27'	04°15'21"
C122	518.50'	38.51'	19.27'	04°15'21"
C123	518.50'	38.51'	19.27'	04°15'21"



- LEGEND:**
- ✱ SET REBAR W/AL CAP PLS # 3161 WITH REFERENCE MONUMENTS
  - 5/8" ALCAP TO BE SET BY REF. ③
  - 5/8" ALCAP TO BE SET BY REF. ②
  - (M) MEASURED BEARING AND/OR DISTANCE
  - (C) CALCULATED BEARING AND/OR DISTANCE
  - (R) RADIAL BEARING
  - ① REFERENCE BEARING AND/OR DISTANCE
  - ② PUBLIC STREETS DEDICATED PER THIS MAP TO THE CITY OF LAS VEGAS
  - LOT LINE
  - UNIT BOUNDARY LINE
  - CENTERLINE
  - SIDEWALK EASEMENT
  - S.V.R.E. (SIGHT VISIBILITY RESTRICTION EASEMENTS) PRIVATELY MAINTAINED WITH NO LANDSCAPING TALLER THAN 30 INCHES
  - N.T.S. NOT TO SCALE
  - ① BLOCK NUMBERS

TYPICAL P.U.E. & U.E.  
N.T.S.

**NOTES:**

- ALL REAR LOT CORNERS SHALL BE SET WITH A NAIL AND TAG P.L.S. 3161 ON BLOCK WALL AND ALL FRONT AND SIDE LOT CORNERS ADJOINING PUBLIC RIGHT-OF-WAY SHALL BE MARKED BY THE SAWCUTTING OF THE BACK OF CURBS ON THE PROLONGATION OF THE PROPERTY LINES.
- ALL COMMON LOTS SHALL BE MAINTAINED BY THE SUMMERLIN HOMEOWNERS ASSOCIATION.
- DIRECT VEHICULAR ACCESS TO SAGEBERRY DRIVE AND LITTLE LEAF DRIVE THROUGH COMMON ELEMENTS FROM ADJUTING LOTS IS PROHIBITED.

**CURVE TABLE:**

CURVE	RADIUS	LENGTH	TANGENT	DELTA
C104	959.50'	17.75'	8.88'	01°02'11"
C82	518.50'	38.51'	19.27'	04°15'21"
C83	100.00'	13.00'	6.51'	07°26'55"
C84	100.00'	24.10'	12.11'	13°48'25"
C85	681.50'	40.07'	20.04'	03°22'07"
C86	681.50'	16.57'	8.28'	01°23'34"
C87	518.50'	41.87'	20.95'	04°37'36"
C88	518.50'	68.60'	34.35'	07°34'50"
C89	718.50'	38.94'	19.47'	03°06'18"
C90	718.50'	38.94'	19.47'	03°06'18"
C91	481.50'	18.06'	9.03'	02°08'59"
C92	718.50'	22.44'	11.22'	01°47'23"
C93	481.50'	48.05'	24.04'	05°43'04"
C94	481.50'	48.05'	24.04'	05°43'04"
C95	481.50'	48.05'	24.04'	05°43'04"
C96	481.50'	48.05'	24.04'	05°43'04"
C97	481.50'	48.05'	24.04'	05°43'04"
C98	481.50'	48.05'	24.04'	05°43'04"
C99	481.50'	48.05'	24.04'	05°43'04"
C100	481.50'	25.91'	12.96'	03°04'57"
C101	922.50'	40.02'	20.01'	02°29'08"
C102	218.50'	2.53'	1.26'	00°39'47"
C103	218.50'	36.82'	18.45'	09°39'18"
C104	218.50'	36.82'	18.45'	09°39'18"
C105	218.50'	36.82'	18.45'	09°39'18"
C106	218.50'	36.82'	18.45'	09°39'18"
C107	218.50'	24.78'	12.40'	06°29'54"
C108	922.50'	43.81'	21.91'	02°43'17"
C109	922.50'	43.81'	21.91'	02°43'17"
C110	922.50'	43.81'	21.91'	02°43'17"
C111	981.50'	54.79'	27.40'	03°11'55"
C112	981.50'	5.26'	2.63'	00°18'26"
C113	959.50'	14.42'	7.21'	00°51'40"
C114	959.50'	36.37'	18.19'	02°10'19"
C115	181.50'	11.33'	5.66'	03°34'32"
C116	181.50'	84.84'	43.21'	26°47'00"
C117	181.50'	48.86'	24.58'	15°25'21"
C118	41.00'	28.65'	14.94'	40°02'19"
C119	41.00'	34.12'	18.12'	47°40'31"
C120	481.50'	32.42'	16.22'	03°51'27"
C121	481.50'	18.67'	9.34'	02°13'17"
C122	959.50'	33.78'	16.89'	02°01'03"
C123	959.50'	15.47'	7.73'	00°55'25"

4209

4542

