

0180422

01071

FINAL MAP OF GLENMERE NO. 3 - BY LEWIS HOMES

A COMMON INTEREST COMMUNITY
A PORTION OF LOT 5, OF THE "ARBORS AT SUMMERLIN VILLAGE 11/12, UNIT NO. 2C"
AS SHOWN BY A MAP ON FILE AS BOOK 80, PAGE 14 OF PLATS,
SITUATED IN SECTION 36, TOWNSHIP 20 SOUTH, RANGE 59 EAST, M.D.M.,
CITY OF LAS VEGAS, CLARK COUNTY, NEVADA

CURVE DATA

(FOR CURVES ON SHEET 2 OF 3)

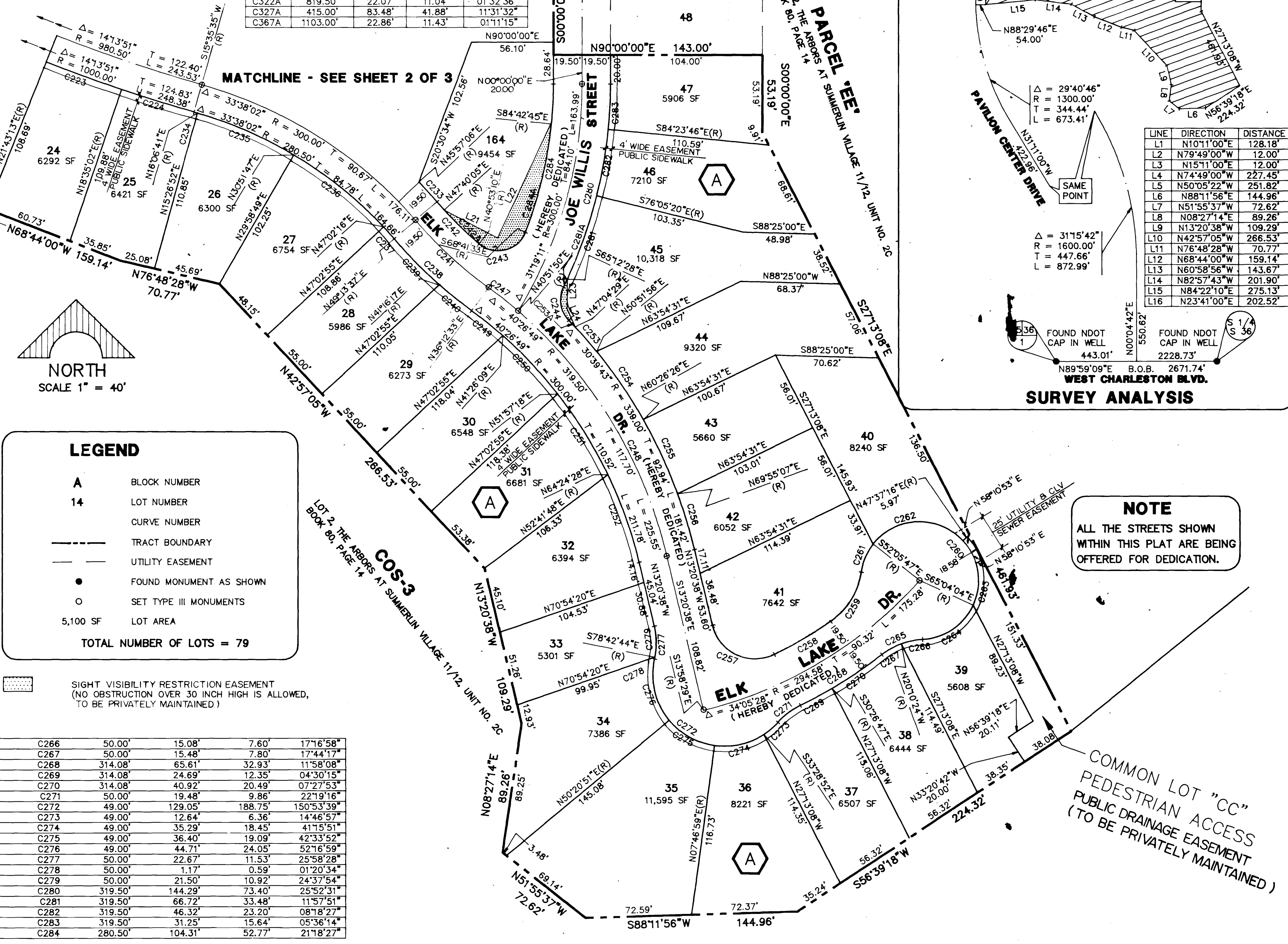
CURVE	RADIUS	LENGTH	TANGENT	DELTA
C302	680.50'	65.86'	32.95'	05°32'41"
C303	680.50'	66.98'	33.51'	05°38'21"
C304	680.50'	8.74'	4.37'	00°44'09"
C305	680.50'	76.12'	38.10'	08°24'33"
C306	680.50'	105.31'	52.76'	08°52'00"
C307	1785.00'	77.87'	38.94'	02°29'58"
C308	20.00'	34.17'	22.97'	97°54'02"
C309	780.50'	53.16'	26.59'	03°54'08"
C310	780.50'	78.46'	39.26'	05°45'34"
C311	780.50'	15.80'	7.90'	01°09'36"
C312	50.00'	36.70'	19.22'	42°03'05"
C313	40.50'	183.48'	48.64'	259°34'05"
C314	40.50'	21.27'	10.89'	30°05'24"
C315	40.50'	70.72'	48.31'	100°02'47"
C316	40.50'	73.42'	51.72'	103°52'10"
C317	40.50'	18.07'	9.19'	25°33'44"
C318	50.00'	33.06'	17.16'	37°52'46"
C319	819.50'	6.97'	3.48'	00°29'14"
C320	819.50'	56.04'	28.03'	03°55'05"
C321	819.50'	57.90'	28.96'	04°02'53"
C322	819.50'	49.96'	24.99'	03°29'35"
C323	20.00'	28.87'	17.60'	82°42'32"
C324	434.50'	55.42'	27.75'	07°18'27"
C325	434.50'	132.10'	66.56'	17°25'11"
C326	415.00'	5.26'	2.63'	00°43'36"
C327	415.00'	85.61'	42.96'	11°49'09"
C328	20.00'	30.00'	18.64'	85°57'14"
C329	20.00'	36.90'	26.40'	105°41'51"
C330	415.00'	3.84'	1.92'	00°31'47"
C331	860.00'	22.07'	11.03'	01°28'12"
C332	50.00'	36.51'	19.11'	41°50'16"
C333	50.00'	31.41'	16.24'	35°59'44"
C334	50.00'	5.10'	2.55'	05°50'31"
C335	40.50'	183.49'	48.62'	259°35'02"
C336	40.50'	94.37'	47.29'	133°30'35"
C337	40.50'	57.92'	35.17'	81°56'41"
C338	40.50'	31.19'	17.24'	44°07'45"
C339	50.00'	33.20'	17.24'	38°02'45"
C340	50.00'	28.34'	14.56'	32°28'22"
C341	50.00'	4.86'	2.43'	05°34'23"
C342	899.00'	27.77'	13.89'	01°46'11"
C343	1003.00'	32.63'	16.32'	01°51'50"
C344	1003.00'	67.28'	33.65'	03°50'35"
C345	1003.00'	72.53'	36.28'	04°08'36"
C346	1003.00'	101.91'	51.00'	05°49'17"
C347	1039.00'	119.65'	59.89'	06°35'53"
C348	1039.00'	126.04'	63.10'	06°57'02"
C349	1039.00'	24.44'	12.22'	01°20'52"
C350	1039.00'	55.05'	27.53'	03°02'08"
C351	1039.00'	64.60'	32.31'	03°33'45"
C352	1039.00'	55.41'	27.71'	03°03'20"
C353	1039.00'	62.28'	31.15'	03°26'04"
C354	1039.00'	32.79'	16.40'	01°48'30"
C355	760.00'	51.43'	25.72'	03°52'37"
C356	760.00'	51.23'	25.63'	03°51'45"
C357	760.00'	47.16'	23.59'	03°33'20"
C358	760.00'	55.50'	27.76'	04°11'02"
C359	439.00'	101.62'	51.04'	13°15'46"
C360	439.00'	8.92'	4.46'	01°09'51"
C361	439.00'	28.89'	14.45'	03°46'12"
C362	439.00'	61.06'	30.58'	07°58'09"
C363	439.00'	20.59'	10.30'	02°41'16"
C364	861.00'	35.89'	17.95'	02°23'17"
C365	861.00'	54.31'	27.16'	03°36'51"
C366	861.00'	49.77'	24.89'	03°18'44"
C367	30.00'	54.19'	38.05'	103°29'54"

S.V.R.E. METES & BOUNDS

LINE	DIRECTION	DISTANCE
L21	N62°12'51"W	40.98'
L22	N24°58'35"E	88.12'
L23	N00°54'37"E	19.69'
L24	S23°45'47"E	14.24'

S.V.R.E. CURVE DATA

CURVE	RADIUS	LENGTH	TANGENT	DELTA
C206A	939.00'	20.42'	10.21'	01°14'45"
C228A	961.00'	47.76'	23.88'	02°50'50"
C230A	319.50'	5.83'	2.92'	01°02'45"
C242A	280.50'	33.20'	16.62'	06°46'55"
C253A	339.00'	6.39'	3.20'	01°04'50"
C281A	319.50'	6.04'	3.02'	01°04'59"
C284A	280.50'	78.43'	39.47'	16°01'12"
C307A	1785.00'	25.46'	12.73'	00°49'03"
C309A	780.50'	69.12'	34.58'	05°04'26"
C322A	819.50'	22.07'	11.04'	01°32'36"
C327A	415.00'	83.48'	41.88'	11°31'32"
C367A	1103.00'	22.86'	11.43'	01°11'15"



LEGEND

- A BLOCK NUMBER
- 14 LOT NUMBER
- CURVE NUMBER
- TRACT BOUNDARY
- - - UTILITY EASEMENT
- FOUND MONUMENT AS SHOWN
- SET TYPE III MONUMENTS
- 5,100 SF LOT AREA

TOTAL NUMBER OF LOTS = 79

SIGHT VISIBILITY RESTRICTION EASEMENT (NO OBSTRUCTION OVER 30 INCH HIGH IS ALLOWED, TO BE PRIVATELY MAINTAINED)

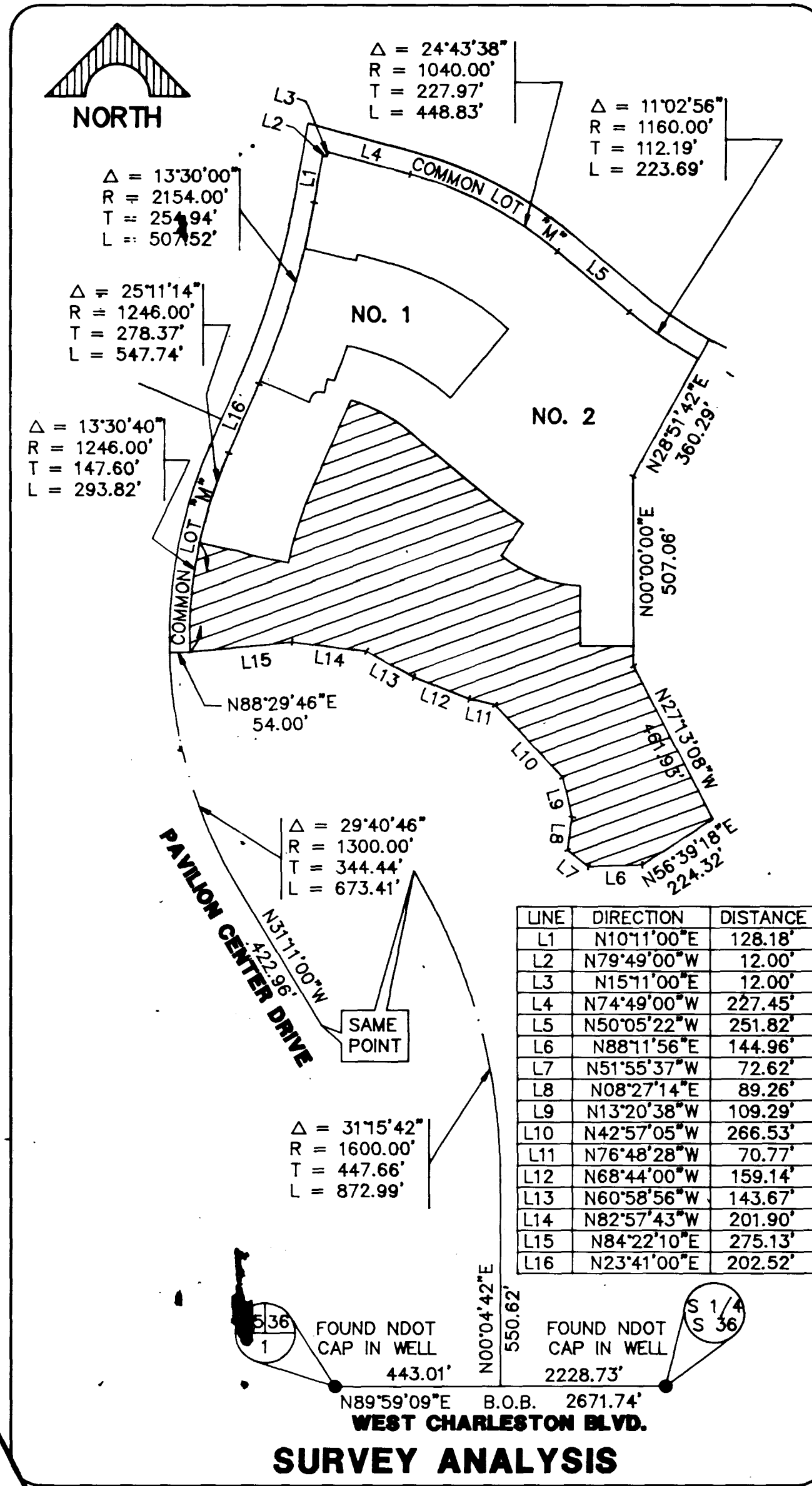
CURVE DATA

(FOR CURVES ON THIS SHEET)

CURVE	RADIUS	LENGTH	TANGENT	DELTA
C223	1000.00'	54.74'	27.38'	03°08'11"
C224	1000.00'	52.20'	26.11'	02°59'27"
C233	319.50'	18.26'	9.13'	03°16'31"
C234	280.50'	2.54'	1.27'	00°31'06"
C235	280.50'	72.22'	36.31'	14°45'06"
C236	280.50'	79.21'	39.87'	16°10'29"
C237	280.50'	10.70'	5.35'	02°11'21"
C238	319.50'	72.59'	36.45'	13°01'04"
C239	319.50'	44.36'	22.22'	07°57'20"
C240	319.50'	28.23'	14.12'	05°03'44"
C241	300.00'	68.16'	34.23'	13°01'04"
C242	280.50'	40.83'	20.45'	08°20'27"
C243	20.00'	38.25'	28.34'	109°34'43"
C244	20.00'	24.39'	13.97'	69°52'52"
C247	319.50'	25.96'	12.99'	04°39'18"
C248	319.50'	199.59'	103.17'	35°47'32"
C249	300.00'	27.37'	13.69'	05°13'37"
C250	300.00'	55.08'	27.62'	10°31'09"
C251	300.00'	65.20'	32.73'	12°27'10"
C252	300.00'	64.13'	32.19'	12°14'54"
C253	339.00'	28.82'	14.42'	04°52'17"
C254	339.00'	56.65'	28.39'	09°34'30"
C255	339.00'	56.08'	28.10'	09°28'41"
C256	339.00'	39.86'	19.96'	06°44'15"
C257	30.00'	53.63'	37.33'	102°25'39"
C258	275.08'	44.98'	22.54'	09°22'09"
C259	50.00'	40.78'	21.60'	46°43'35"
C260	40.50'	183.06'	49.15'	258°58'36"
C261	40.50'	21.04'	10.77'	29°46'15"
C262	40.50'	70.49'	48.03'	99°43'03"
C263	40.50'	47.58'	26.96'	67°18'40"
C264	40.50'	43.95'	24.42'	62°10'38"
C265	50.00'	30.56'	15.77'	35°01'15"

C266	50.00'	15.08'	7.60'	17°16'58"
C267	50.00'	15.48'	7.80'	17°44'17"
C268	314.08'	65.61'	32.93'	11°58'08"
C269	314.08'	24.69'	12.35'	04°30'15"
C270	314.08'	40.92'	20.49'	07°27'53"
C271	50.00'	19.48'	9.86'	22°19'16"
C272	49.00'	129.05'	188.75'	150°53'39"
C273	49.00'	12.64'	6.36'	14°46'57"
C274	49.00'	35.29'	18.45'	41°15'51"
C275	49.00'	36.40'	19.09'	42°33'52"
C276	49.00'	44.71'	24.05'	52°16'59"
C277	50.00'	22.67'	11.53'	25°58'28"
C278	50.00'	1.17'	0.59'	01°20'34"
C279	50.00'	21.50'	10.92'	24°37'54"
C280	319.50'	144.29'	73.40'	25°52'31"
C281	319.50'	66.72'	33.48'	11°57'51"
C282	319.50'	46.32'	23.20'	08°18'27"
C283	319.50'	31.25'	15.64'	05°36'14"
C284	280.50'	104.31'	52.77'	21°18'27"

BASIS OF BEARING
NORTH 89°59'09" EAST, BEING THE BEARING OF THE CENTERLINE OF WEST CHARLESTON BLVD., SHOWN BY A MAP THEREOF ON FILE IN BOOK 80, PAGE 14 OF PLATS IN THE CLARK COUNTY RECORDER'S OFFICE, CLARK COUNTY, NEV.



LINE	DIRECTION	DISTANCE
L1	N10°11'00"E	128.18'
L2	N79°49'00"W	12.00'
L3	N15°11'00"E	12.00'
L4	N74°49'00"W	227.45'
L5	N50°05'22"W	251.82'
L6	N88°11'56"E	144.96'
L7	N51°55'37"W	72.62'
L8	N08°27'14"E	89.26'
L9	N13°20'38"W	109.29'
L10	N42°57'05"W	266.53'
L11	N76°48'28"W	70.77'
L12	N68°44'00"W	159.14'
L13	N60°58'56"W	143.67'
L14	N84°22'10"E	201.90'
L15	N84°22'10"E	275.13'
L16	N23°41'00"E	202.52'

NOTE

ALL THE STREETS SHOWN WITHIN THIS PLAT ARE BEING OFFERED FOR DEDICATION.

COMMON LOT "CC" PEDESTRIAN ACCESS PUBLIC DRAINAGE EASEMENT (TO BE PRIVATELY MAINTAINED)

