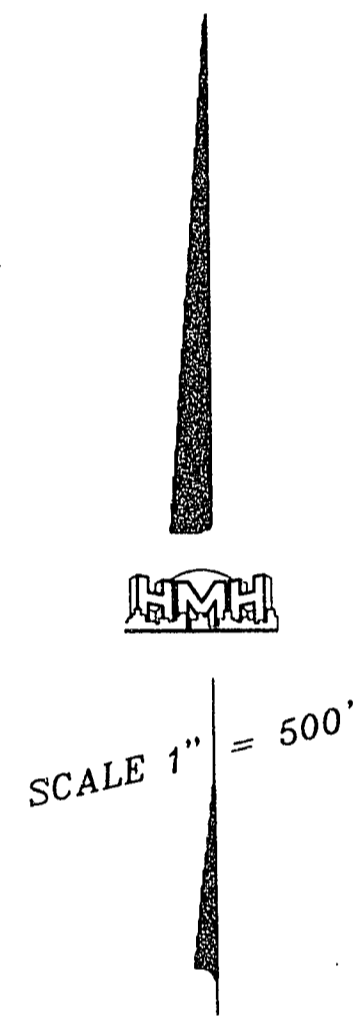


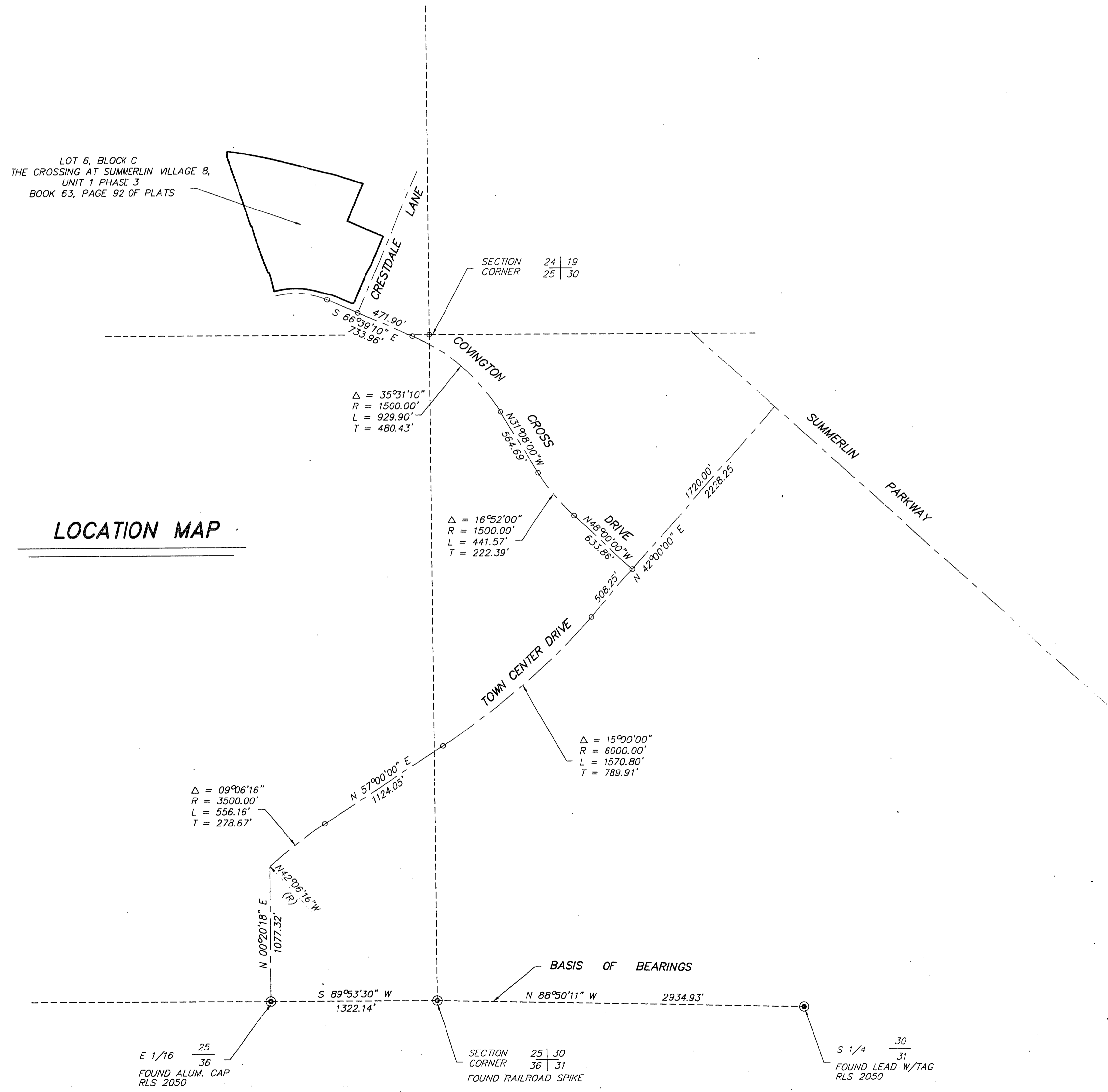
FINAL MAP OF PACIFIC CREST

A CONDOMINIUM SUBDIVISION AND COMMON INTEREST COMMUNITY

BEING A SUBDIVISION OF LOT SIX (6) IN BLOCK C OF THE CROSSING AT SUMMERLIN VILLAGE 8, UNIT 1 PHASE 3 AS SHOWN BY MAP THEREOF ON FILE IN BOOK 63, PAGE 92 OF PLATS IN THE CLARK COUNTY RECORDER'S OFFICE, CLARK COUNTY, NEVADA TOGETHER WITH LOT 1000 IN BLOCK A OF AMENDED PLAT OF PARCEL W IN THE CROSSING AT SUMMERLIN AS SHOWN BY MAP THEREOF ON FILE IN BOOK 71, PAGE 4 OF PLATS IN THE CLARK COUNTY RECORDER'S OFFICE, CLARK COUNTY, NEVADA LYING WITHIN SECTION 24, TOWNSHIP 20 SOUTH, RANGE 59 EAST, M.D.M., CITY OF LAS VEGAS, CLARK COUNTY, NEVADA



LOT 6, BLOCK C
THE CROSSING AT SUMMERLIN VILLAGE 8,
UNIT 1 PHASE 3
BOOK 63, PAGE 92 OF PLATS



LOCATION MAP

E 1/16 25/36
FOUND ALUM. CAP
RLS 2050

SECTION CORNER 25 | 30
36 | 31
FOUND RAILROAD SPIKE

S 1/4 30/31
FOUND LEAD W/TAG
RLS 2050