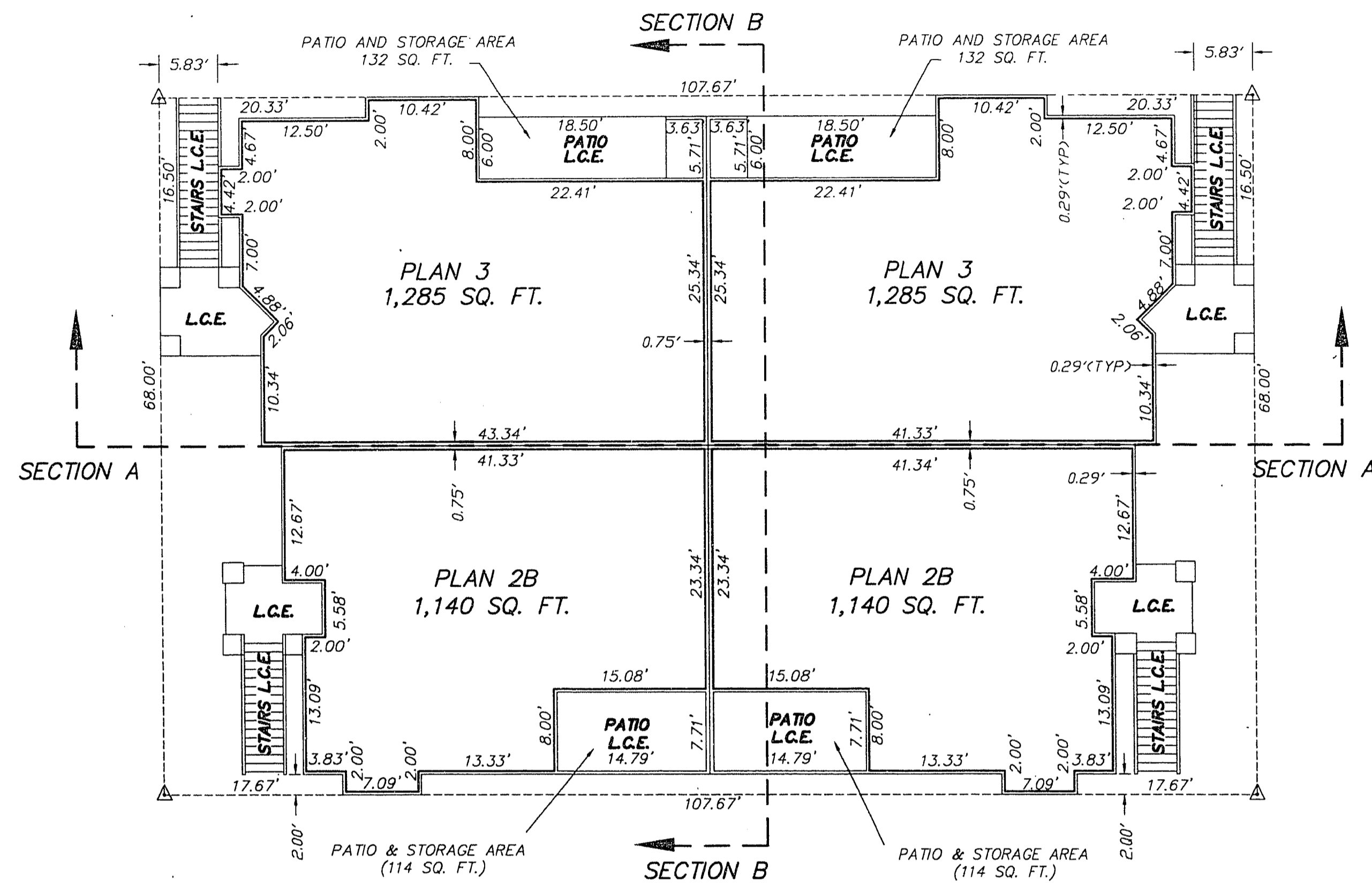


# FINAL MAP OF PACIFIC CREST

## A CONDOMINIUM SUBDIVISION AND COMMON INTEREST COMMUNITY

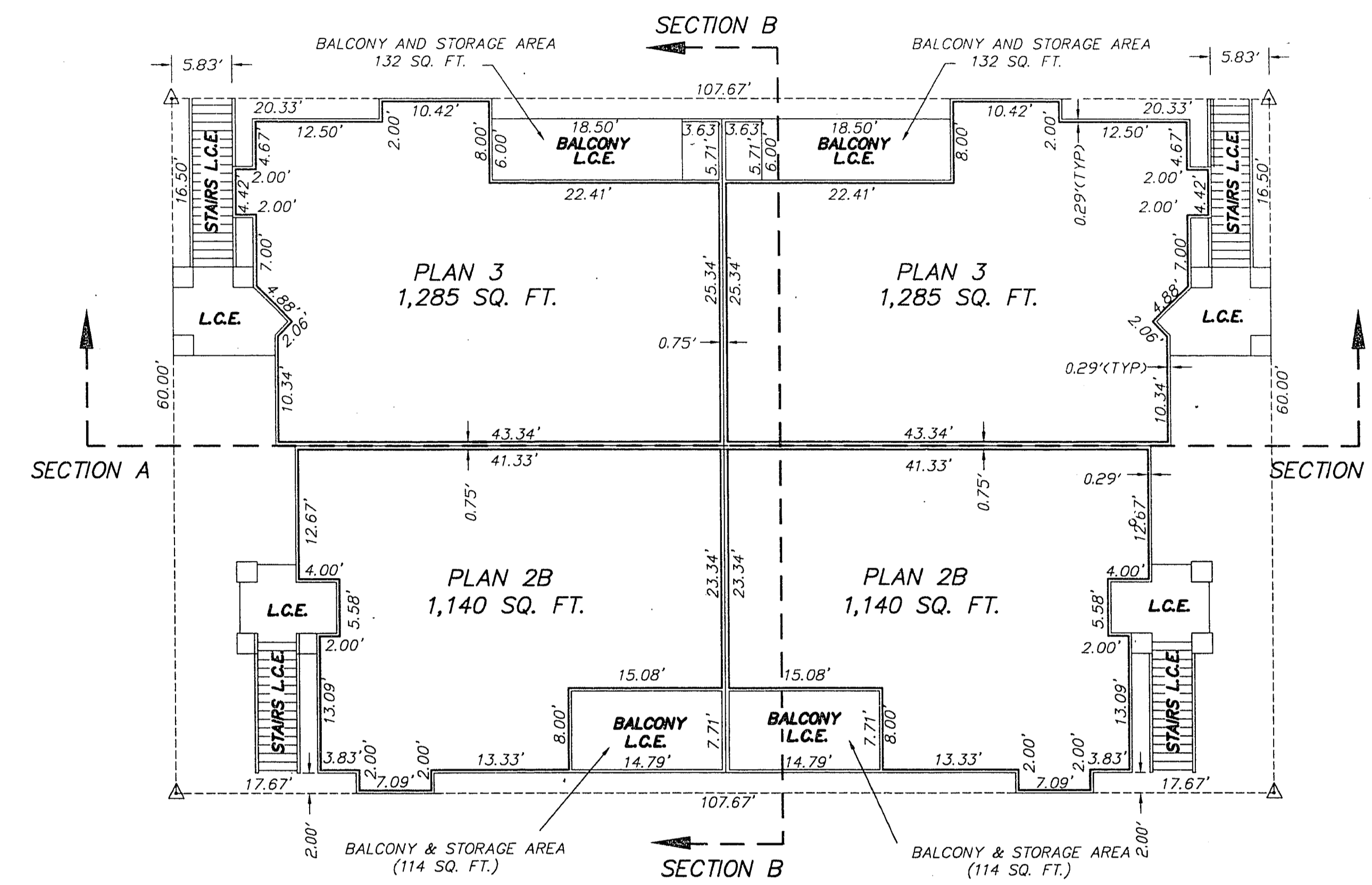
BEING A SUBDIVISION OF LOT SIX (6) IN BLOCK C OF THE CROSSING AT SUMMERLIN VILLAGE 8, UNIT 1 PHASE 3 AS SHOWN BY MAP THEREOF ON FILE IN BOOK 63, PAGE 92 OF PLATS IN THE CLARK COUNTY RECORDER'S OFFICE, CLARK COUNTY, NEVADA TOGETHER WITH LOT 1000 IN BLOCK A OF AMENDED PLAT OF PARCEL W IN THE CROSSING AT SUMMERLIN AS SHOWN BY MAP THEREOF ON FILE IN BOOK 71, PAGE 4 OF PLATS IN THE CLARK COUNTY RECORDER'S OFFICE, CLARK COUNTY, NEVADA LYING WITHIN SECTION 24, TOWNSHIP 20 SOUTH, RANGE 59 EAST, M.D.M., CITY OF LAS VEGAS, CLARK COUNTY, NEVADA



BUILDING TYPE 4

SCALE 1" = 10'

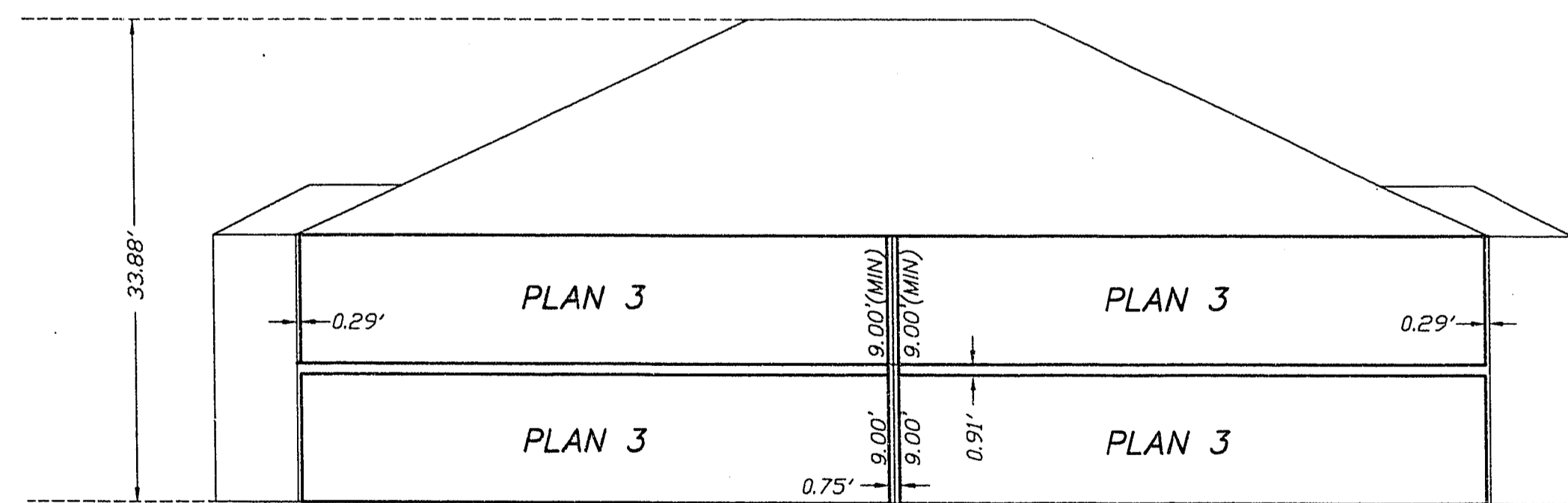
FIRST FLOOR



BUILDING TYPE 4

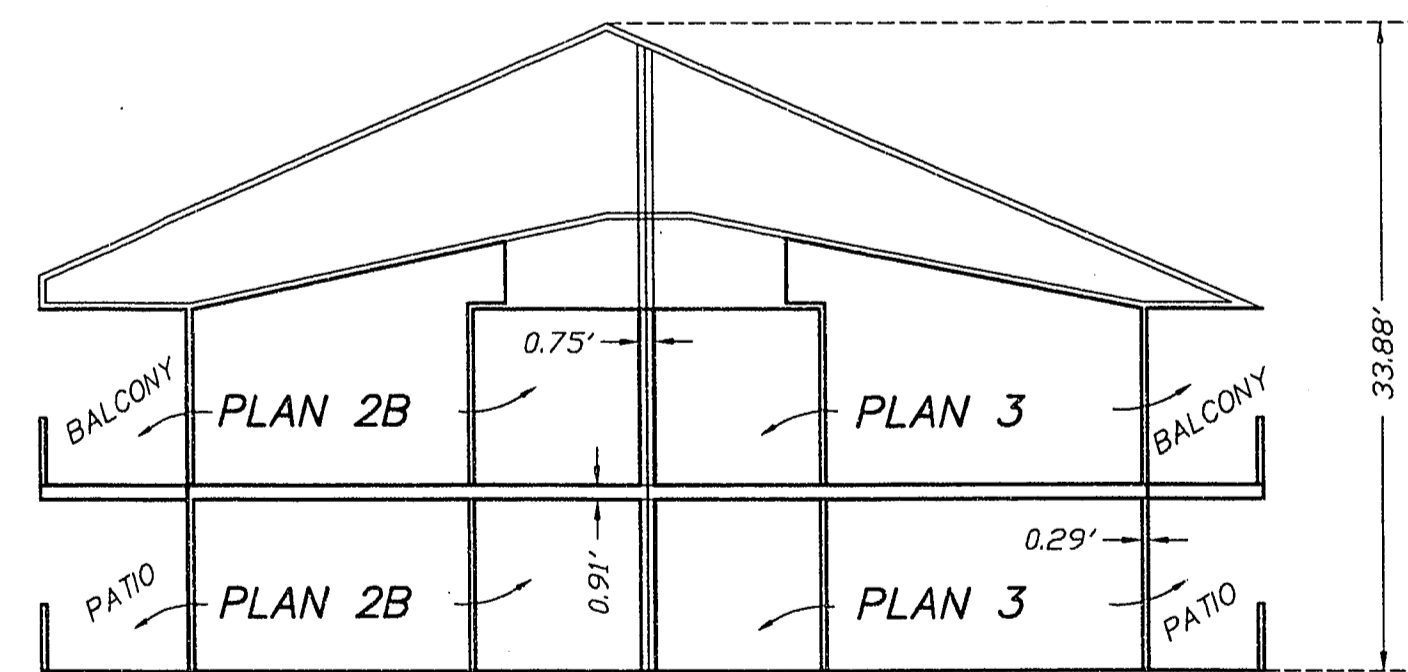
SCALE 1" = 10'

SECOND FLOOR



BUILDING TYPE 4 - SECTION A

SCALE 1" = 10'



BUILDING TYPE 4 - SECTION B

SCALE 1" = 10'

### LEGEND

- CORNER OF BUILDING ENVELOPE
- L.C.E.** LIMITED COMMON ELEMENT
- BUILDING ENVELOPE OUTLINE
- - - SECTION "A"

### NOTES:

- 1) ALL INTERIOR DIMENSIONS ARE FROM FACE OF STUD TO FACE OF STUD.
- 2) TYPICAL GARAGE PARKING ASSIGNMENTS FOR BUILDING TYPE 3.