

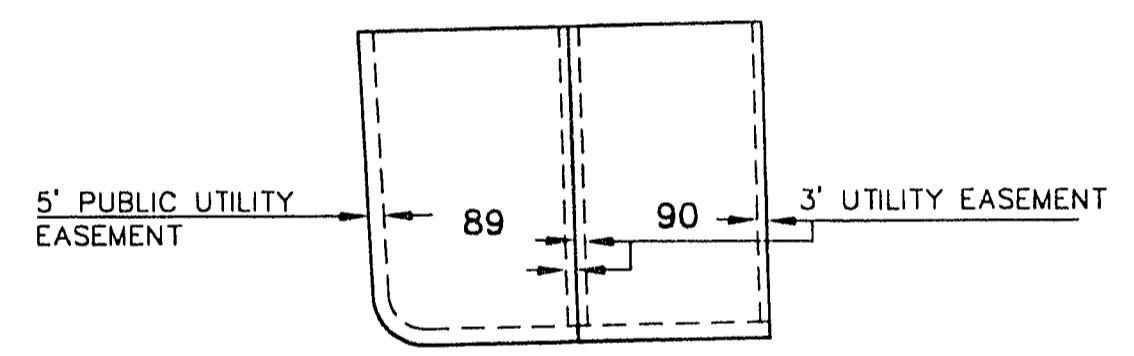
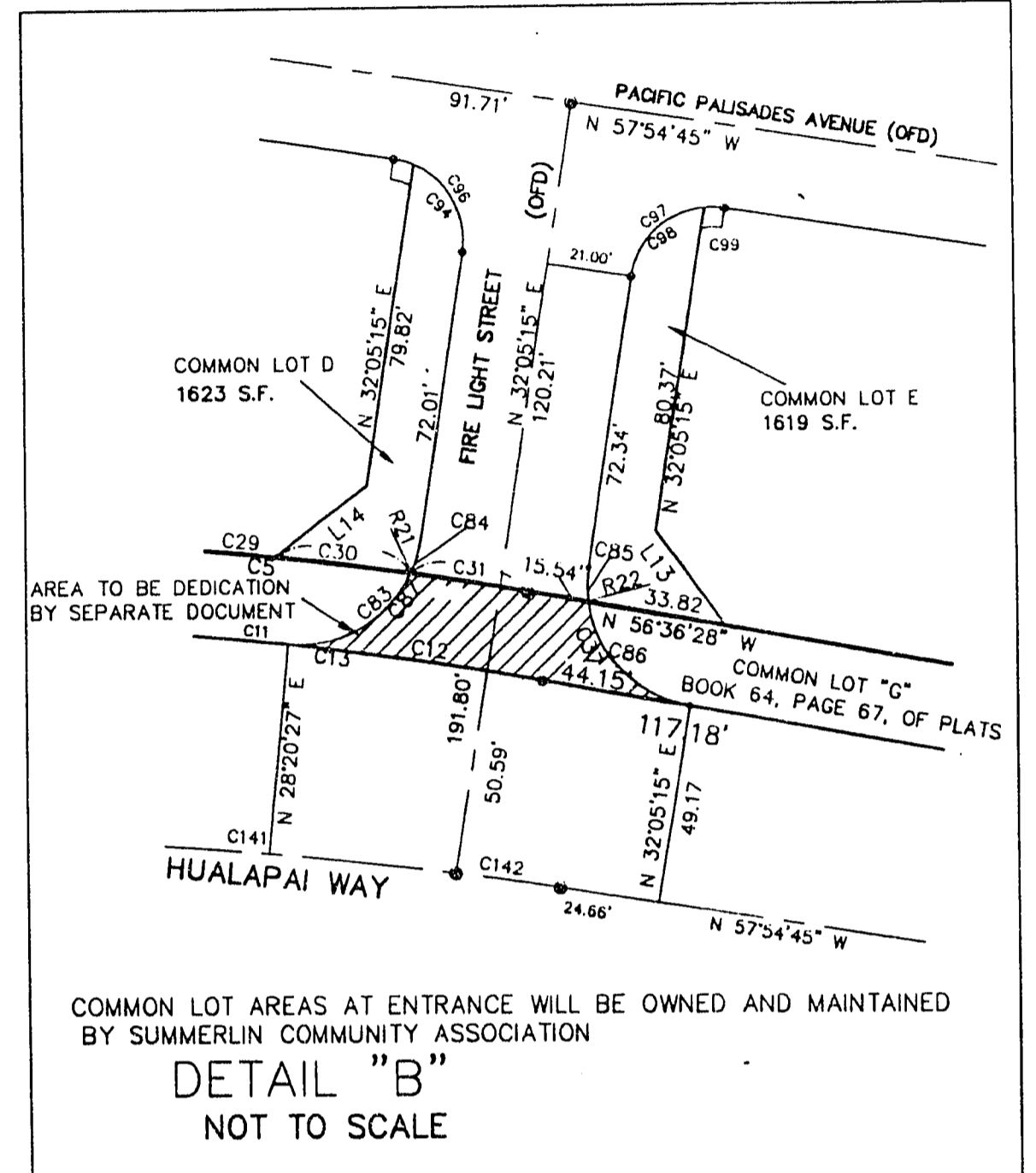
000307

22-17-91

00802

FINAL MAP OF DISCOVERY HILLS UNIT 2

A PORTION OF LOT 6 — THE CROSSING AT SUMMERLIN VILLAGE 8 UNIT NO. 2
BOOK 64, PAGE 67, OF PLATS; SECTION 25, TOWNSHIP 20 SOUTH, RANGE 59 EAST,
M.D.M.
CITY OF LAS VEGAS, CLARK COUNTY, NEVADA



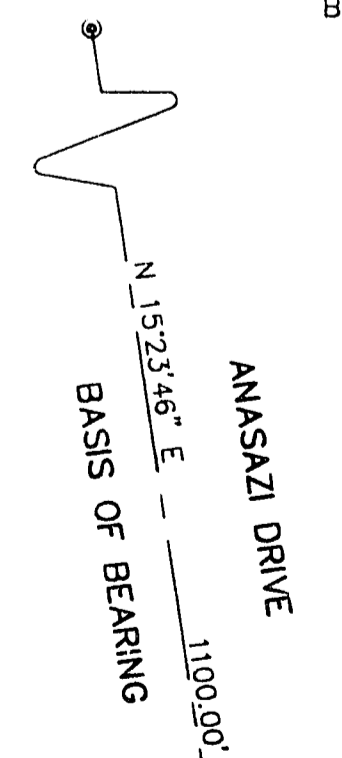
LEGEND

- SET TYPE III MONUMENT P.L.S. 10355 WITH TIES.
- SET REBAR AND AL. CAP P.L.S. 10355
- FOUND REBAR & AL. CAP P.L.S. 8056
- R1 RADIAL LINE NUMBER
- L4 LINE SEGMENT NUMBER
- C23 CURVE SEGMENT NUMBER
- Ⓢ BLOCK NUMBER
- 17 LOT NUMBER
- BOUNDARY LINE
- - - CENTERLINE
- - - 4' WIDE SIDEWALK EASEMENT
- P.O.B. POINT OF BEGINNING
- SF SQUARE FEET
- THERE ARE 52 LOTS IN THIS UNIT OF THIS SUBDIVISION.
- R-1 = BOOK 64 PAGE 67 OF PLATS
- O/A = OVERALL DISTANCE ALONG LINE OR CURVE
- (OFD) = OFFERED FOR DEDICATION

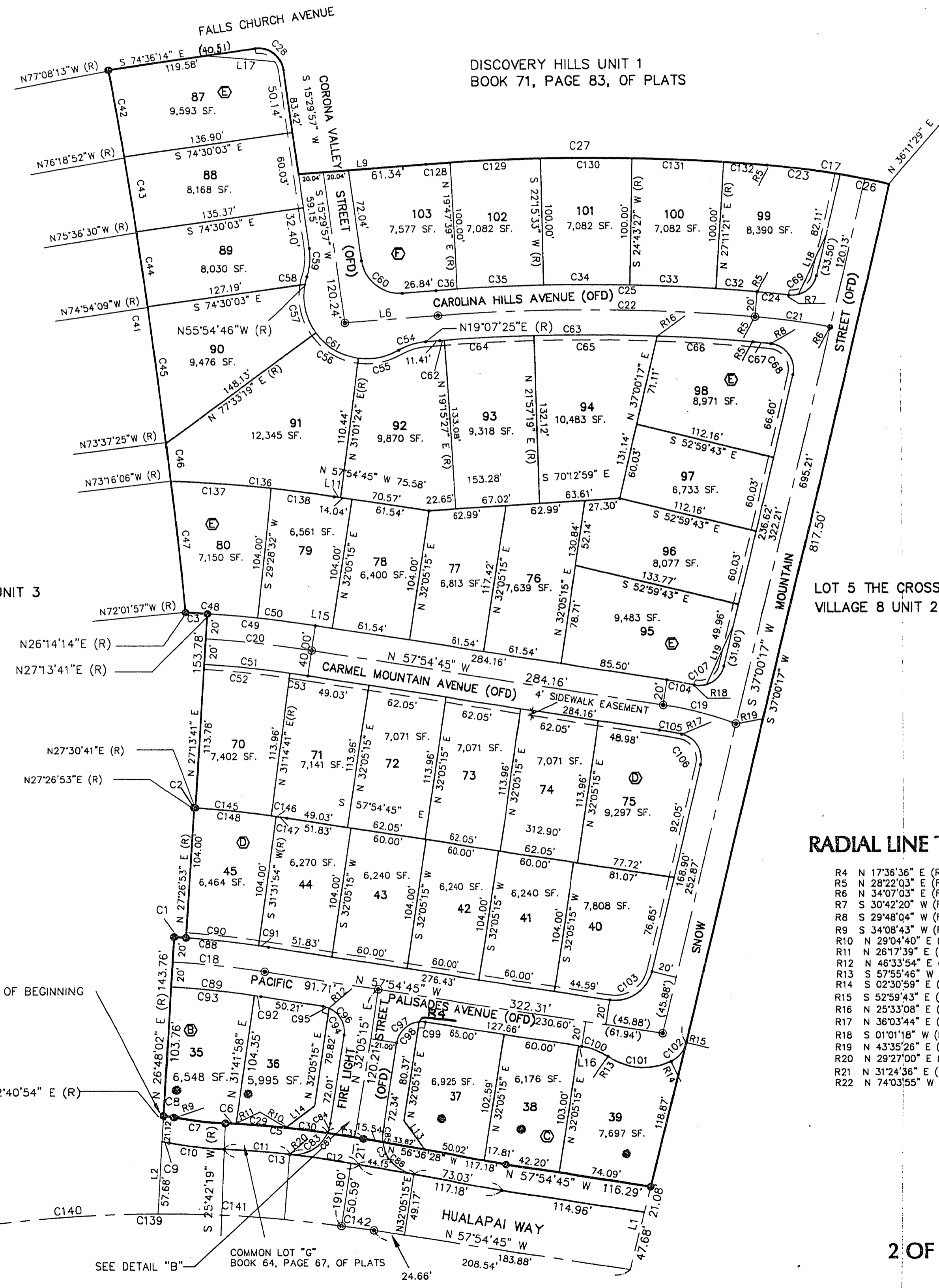
TYPICAL LOT DETAIL

NOTES

- 1) PURSUANT TO NRS 278.371 ALL REAR LOT CORNERS SHALL BE SET WITH A NAIL AND TAG " PLS 10355" ON BLOCK WALLS AND ALL FRONT OR SIDE LOT CORNERS ADJOINING RIGHT-OF-WAY SHALL BE MARKED BY THE SAW CUTTING OF THE BACK OF CURBS ON THE PROLONGATION OF THE PROPERTY LINES.
- 2) — DIRECT VEHICULAR ACCESS TO HUALAPAI WAY THROUGH COMMON AREA FROM ABUTTING LOTS IS PROHIBITED.
- 3) — COMMON LOT AREAS AT ENTRANCE WILL BE OWNED AND MAINTAINED BY SUMMERLIN COMMUNITY ASSOCIATION



PROPOSED DISCOVERY HILLS UNIT 3



RADIAL LINE TABLE

R4	N 173°36' E (R)
R5	N 28°22'03" E (R)
R6	N 34°07'03" E (R)
R7	S 30°42'20" W (R)
R8	S 28°48'04" W (R)
R9	S 34°08'43" W (R)
R10	N 29°04'40" E (R)
R11	N 26°17'39" E (R)
R12	N 48°33'54" E (R)
R13	S 57°55'46" W (R)
R14	S 02°30'59" E (R)
R15	S 52°59'43" E (R)
R16	N 25°33'08" W (R)
R17	N 36°03'44" E (R)
R18	S 01°01'18" W (R)
R19	N 43°35'28" E (R)
R20	N 29°27'00" E (R)
R21	N 31°24'36" E (R)
R22	N 74°03'55" W (R)

BOOK 72 PAGE 51
4427-2