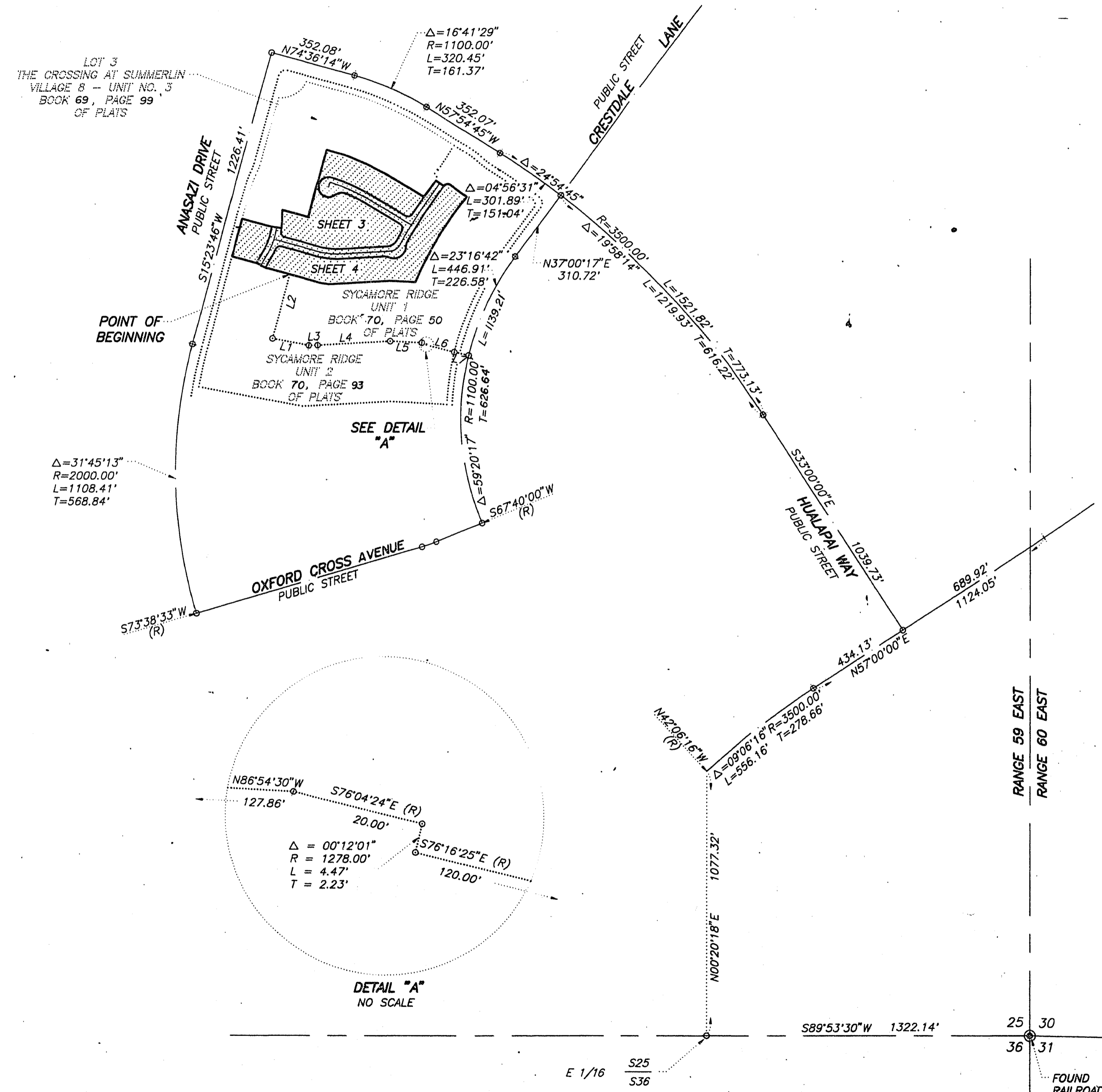


21-17-33

FINAL MAP OF SYCAMORE RIDGE - UNIT 3

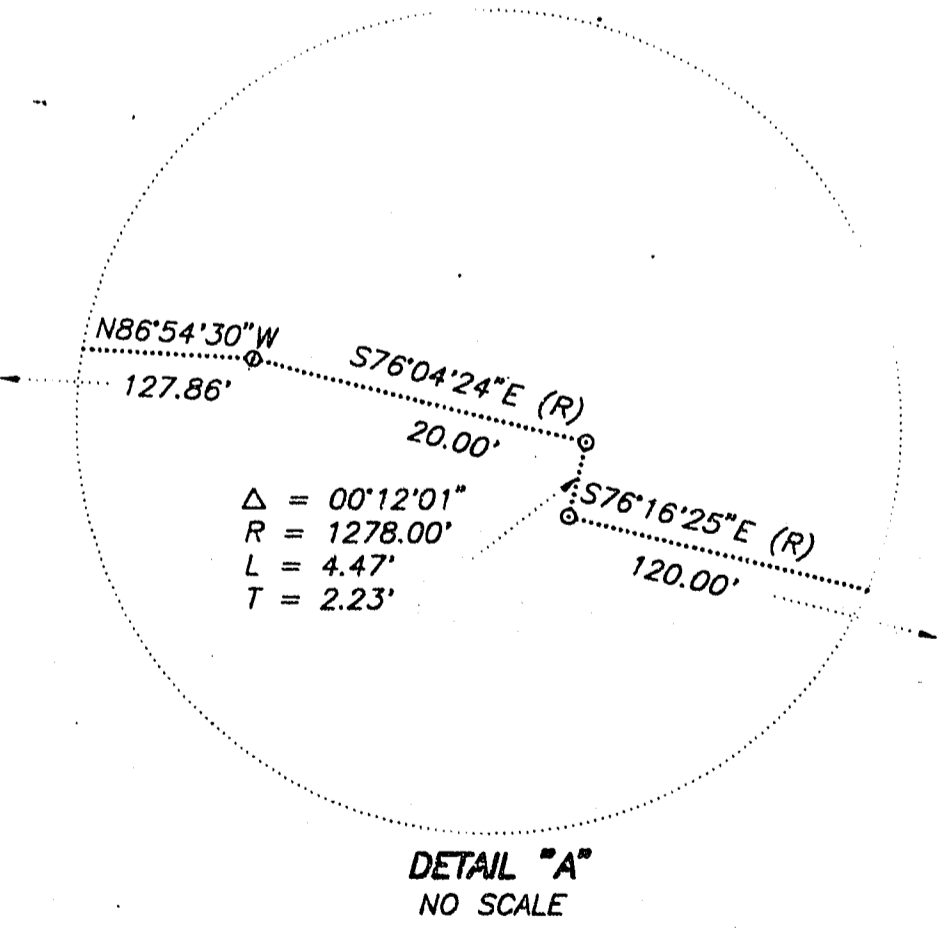
A PLANNED COMMUNITY AND COMMON INTEREST COMMUNITY
BEING A SUBDIVISION OF A PORTION OF LOT 4 IN BLOCK B OF "THE CROSSING AT SUMMERLIN VILLAGE 8 - UNIT NO. 3" AS SHOWN BY MAP THEREOF ON FILE IN BOOK 69, PAGE 99 OF PLATS IN THE CLARK COUNTY RECORDER'S OFFICE, CLARK COUNTY, NEVADA, LYING WITHIN SECTION 25, TOWNSHIP 20 SOUTH, RANGE 59 EAST, M.D.M., CITY OF LAS VEGAS, CLARK COUNTY, NEVADA



LINE	BEARING	DISTANCE
L1	N79°22'00"W	151.18'
L2	N15°23'46"E	270.04'
L3	S88°41'38"W	37.20'
L4	S86°57'00"W	298.12'
L5	N86°54'30"W	127.86'
L6	N76°16'25"W	120.00'
L7	N76°16'25"W(R)	58.00'

- LEGEND**
- FOUND MONUMENTATION AS SHOWN AND DESCRIBED
 - REFERENCE POINT
 - SUBDIVISION BOUNDARY LINE
 - STREET CENTERLINE
 - L1 STREET CENTERLINE

SCALE: 1" = 300'



LOCATION MAP