

FINAL MAP OF SYCAMORE RIDGE - UNIT 1

A PLANNED COMMUNITY AND COMMON INTEREST COMMUNITY
BEING A SUBDIVISION OF A PORTION OF LOT 4 IN BLOCK B OF "THE CROSSING AT SUMMERLIN VILLAGE 8 - UNIT NO. 3" AS SHOWN BY MAP THEREOF ON FILE IN BOOK 69, PAGE 99 OF PLATS IN THE CLARK COUNTY RECORDER'S OFFICE, CLARK COUNTY, NEVADA, LYING WITHIN SECTION 25, TOWNSHIP 20 SOUTH, RANGE 59 EAST, M.D.M., CITY OF LAS VEGAS, CLARK COUNTY, NEVADA.

LEGEND

- SET 5/8" REBAR AND ALUM. CAP STAMPED P.L.S. 9390 W/ALUMINUM REFERENCE TIES IN TOP OF CURB (UNLESS OTHERWISE NOTED)
- SET MONUMENT PER N.R.S. 278.371

LOT NUMBER
TOTAL RESIDENTIAL LOTS = 58
TOTAL COMMON LOTS = 3

ⓑ BLOCK NUMBER

① CURVE NUMBER

L1 LINE SEGMENT NUMBER

— SUBDIVISION BOUNDARY LINE

— STREET CENTERLINE

- - - 4.00' WIDE PUBLIC SIDEWALK EASEMENT

NOTES

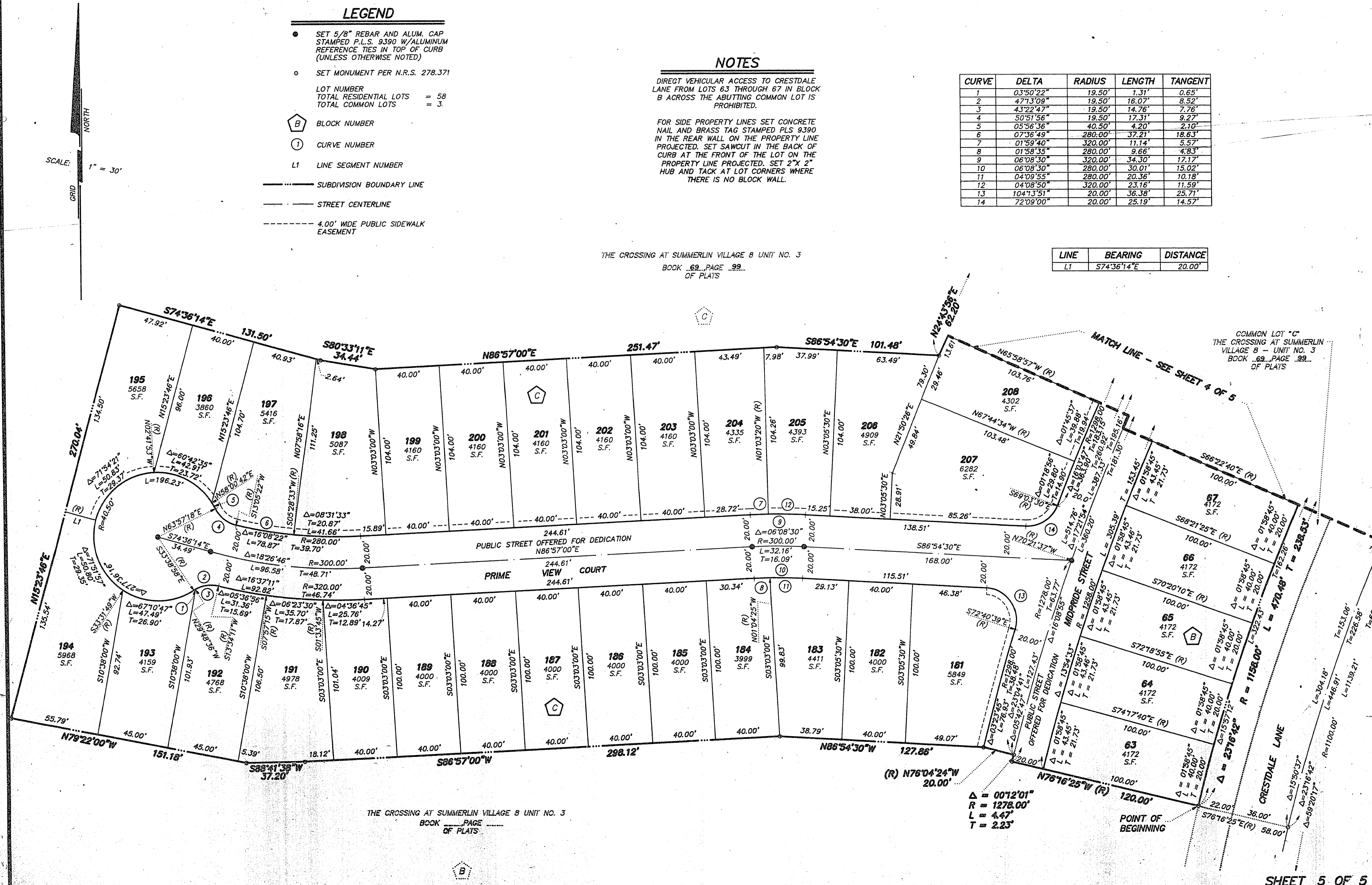
DIRECT VEHICULAR ACCESS TO CRESTDALE LANE FROM LOTS 63 THROUGH 67 IN BLOCK B ACROSS THE ABUTTING COMMON LOT IS PROHIBITED.

FOR SIDE PROPERTY LINES SET CONCRETE NAIL AND BRASS TAG STAMPED PLS 9390 IN THE REAR WALL ON THE PROPERTY LINE PROJECTED. SET SAWCUT IN THE BACK OF CURB AT THE FRONT OF THE LOT ON THE PROPERTY LINE PROJECTED. SET 2" X 2" HUB AND TACK AT LOT CORNERS WHERE THERE IS NO BLOCK WALL.

CURVE	DELTA	RADIUS	LENGTH	TANGENT
1	03°50'22"	19.50'	1.31'	0.65'
2	47°13'09"	19.50'	16.07'	8.52'
3	43°22'47"	19.50'	14.76'	7.76'
4	50°51'56"	19.50'	17.31'	9.27'
5	05°56'36"	40.50'	4.90'	2.10'
6	07°36'49"	280.00'	37.21'	18.63'
7	01°59'40"	320.00'	11.14'	5.57'
8	01°58'35"	280.00'	9.66'	4.83'
9	06°08'30"	320.00'	34.30'	17.17'
10	06°08'30"	280.00'	30.01'	15.02'
11	04°09'55"	280.00'	20.36'	10.18'
12	04°08'50"	320.00'	23.16'	11.59'
13	104°13'51"	20.00'	36.38'	25.71'
14	72°09'00"	20.00'	25.19'	14.57'

LINE	BEARING	DISTANCE
L1	S74°36'14"E	20.00'

THE CROSSING AT SUMMERLIN VILLAGE 8 UNIT NO. 3
BOOK 69, PAGE 99
OF PLATS



THE CROSSING AT SUMMERLIN VILLAGE 8 UNIT NO. 3
BOOK 69, PAGE 99
OF PLATS