

962809

02641

INDIAN HILLS - UNIT 3

A PORTION OF THE NORTHWEST QUARTER (NW 1/4) OF THE SOUTHEAST QUARTER (SE 1/4)
OF SECTION 24, TOWNSHIP 20 SOUTH, RANGE 59 EAST, M.D.M., CITY OF LAS VEGAS, CLARK COUNTY, NEVADA

LEGEND

- BOUNDARY LINE
- LOT LINE
- STREET CENTERLINE
- 5' WIDE PEDESTRIAN ACCESS CORRIDOR EASEMENT
- SET NAIL AND BRASS TAG "VIN PLS 9/05"
- SET TYPE MONUMENT
- ALUMINUM CAP "VIN PLS 9/05"
- FIXED MONUMENT AS DESCRIBED
- P.O.B.** POINT OF BEGINNING
- 17** LOT NUMBER / TOTAL LOTS = 40
- C25** CURVE NUMBER
- L22** COURSE NUMBER
- R19** RADIAL LINE NUMBER
- (R)** RADIAL
- (6)** BLOCK NUMBER
- S.F.** SQUARE FEET
- L.V.V.W.D.** LAS VEGAS VALLEY WATER DISTRICT
- "SIGHT VISIBILITY RESTRICTION EASEMENT AREA" - ARE PUBLIC EASEMENTS AND AS SUCH THE HEIGHT OF LANDSCAPING OR PHYSICAL IMPROVEMENTS WITHIN THE EASEMENT AREA IS RESTRICTED TO A MAXIMUM OF 30 INCHES.

CURVE TABLE

CURVE	RADIUS	LENGTH	TANGENT	DELTA
C1	15.00'	24.56'	16.04'	93°49'29"
C2	9200.00'	18.47'	9.23'	00°06'54"
C3	9200.00'	117.97'	58.99'	00°44'05"
C4	9200.00'	45.00'	22.50'	00°16'49"
C5	9200.00'	40.00'	20.00'	00°14'57"
C9	9200.00'	8.53'	4.27'	00°03'11"
C10	118.00'	101.86'	54.35'	40°27'41"
C11	3436.00'	96.55'	48.28'	01°36'36"
C12	3436.00'	142.40'	71.21'	02°22'28"
C13	3436.00'	143.10'	71.56'	02°23'10"
C14	3436.00'	128.98'	64.50'	02°09'03"
C15	19.50'	9.52'	4.86'	27°57'54"
C16	19.50'	7.10'	3.59'	20°51'44"
C17	40.50'	49.86'	28.64'	70°32'09"
C18	40.50'	41.89'	23.04'	59°15'41"
C19	40.50'	84.87'	70.24'	120°03'54"
C20	40.50'	19.64'	10.02'	27°47'31"
C21	19.50'	16.62'	8.85'	48°49'38"
C22	20.00'	32.75'	21.38'	93°49'29"
C23	30.00'	44.64'	27.61'	85°15'04"
C24	40.50'	20.66'	10.56'	29°13'17"
C25	40.50'	42.65'	23.54'	60°20'23"
C26	40.50'	34.82'	18.57'	49°15'57"
C27	40.50'	79.09'	59.92'	111°53'34"
C28	40.50'	19.04'	9.70'	26°56'03"
C29	50.00'	22.55'	11.47'	25°50'31"
C30	50.00'	19.06'	9.65'	21°50'20"
C31	50.00'	35.00'	18.25'	40°06'25"
C33	50.00'	30.44'	15.71'	34°52'55"
C34	50.00'	4.60'	2.30'	05°16'09"
C35	50.00'	17.95'	9.07'	20°34'22"
C36	40.50'	30.08'	18.71'	86°10'34"
C37	40.50'	196.26'	35.42'	27°39'15"
C38	50.00'	22.55'	11.47'	25°50'31"
C39	50.00'	119.50'	126.72'	136°56'06"

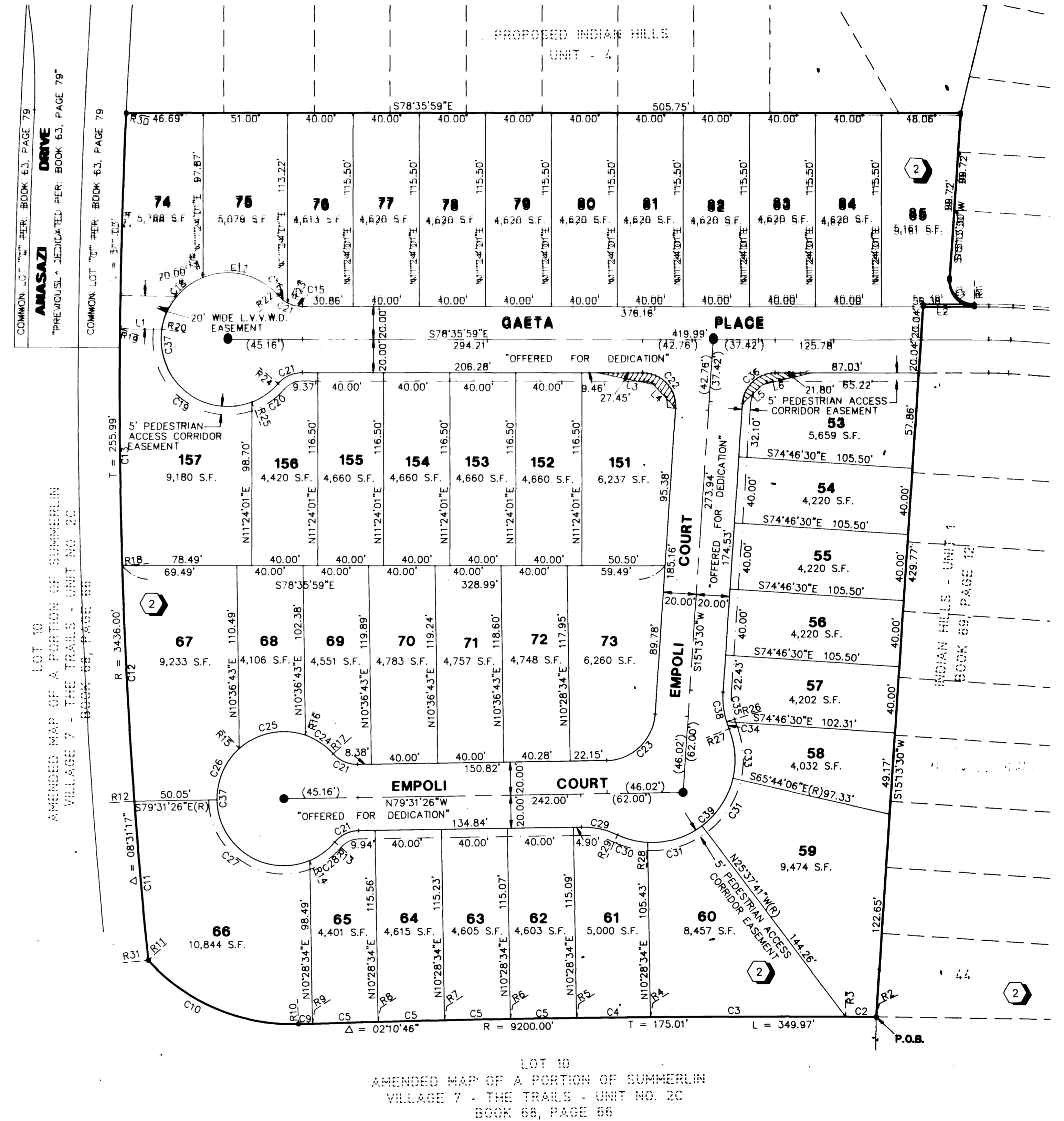
COURSE TABLE

LINE	DIRECTION	DISTANCE
L1	S78°06'01"E	25.44'
L2	N78°35'59"W	31.07'
L3	S66°52'54"E	34.78'
L4	S31°41'14"E	19.54'
L5	S58°18'46"W	16.81'
L6	S87°42'32"W	30.34'

RADIAL LINE TABLE

LINE	DIRECTION	TYPE
R1	S11°24'01"W	
R2	S11°45'14"W	
R3	N11°38'20"E	
R4	N10°54'15"E	
R5	N10°37'26"E	
R6	N10°22'29"E	
R7	N10°07'33"E	
R8	N09°52'36"E	
R9	N09°37'39"E	
R10	S09°34'28"W	PRC
R11	S59°02'08"W	
R12	S82°45'39"E	
R13	N38°21'04"W	PRC
R14	N11°25'00"W	
R15	S30°15'29"E	
R16	S30°04'55"W	
R17	S59°16'12"W	PRC
R18	S80°23'10"E	
R19	N78°00'00"W	
R20	S69°34'11"E	
R21	S10°18'31"E	
R22	S60°13'39"W	PRC
R23	N39°21'55"E	
R24	N37°25'36"W	PRC
R25	N09°38'06"W	
R26	S84°39'08"W	
R27	N79°22'59"E	PRC
R28	N14°28'45"E	
R29	N36°19'05"E	PRC
R30	N75°50'57"W	
R31	N84°22'15"W	

ACT	DATE	BY	REVISION
1	7/30/96	ARR	EMPOLI CT. AND COPPARO ST. CHANGED TO EMPOLI CT.



NOTES:

- ALL REAR LOT CORNERS SHALL BE SET WITH A NAIL AND BRASS TAG P.L.S. 9/05 ON BLOCK WALL AND ALL FRONT OF SIDE LOT CORNERS ADJOINING RIGHT-OF-WAY SHALL BE MARKED BY THE SAWCUTTING OF THE BACK OF CURBS ON THE PROLONGATION OF THE PROPERTY LINES.
- DIRECT VEHICULAR ACCESS TO ANASAZI DRIVE THROUGH COMMON AREA FROM ADJUTING LOTS IS PROHIBITED.

W.O. 4820-3
SHEET 3 OF 5
ARR

358

BOOK 75 PAGE 219 4410-3

