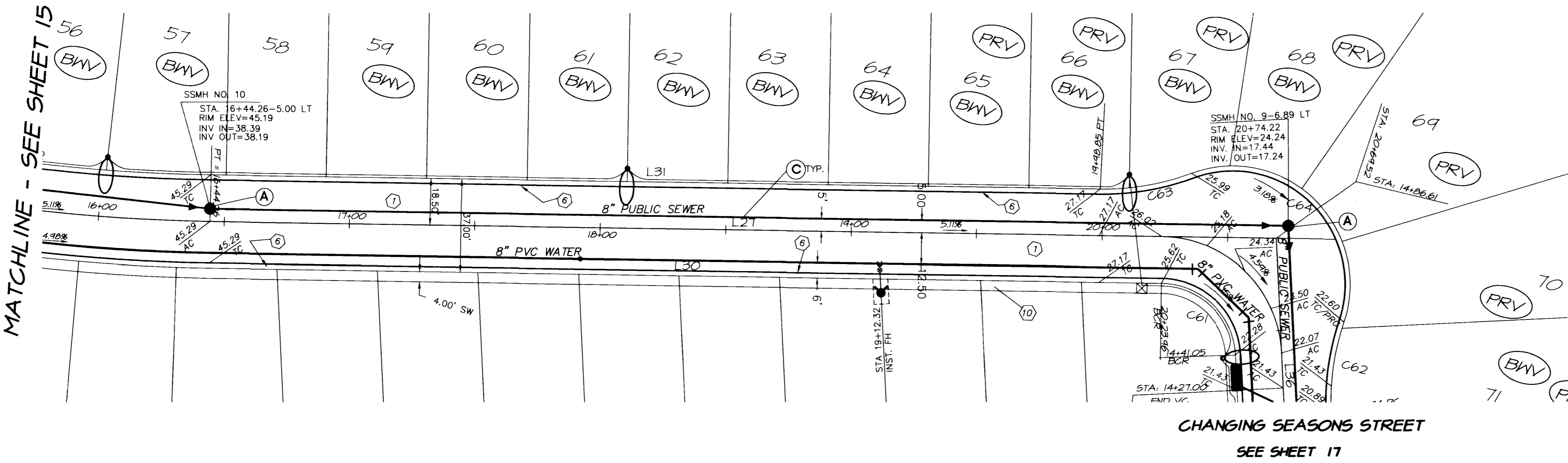
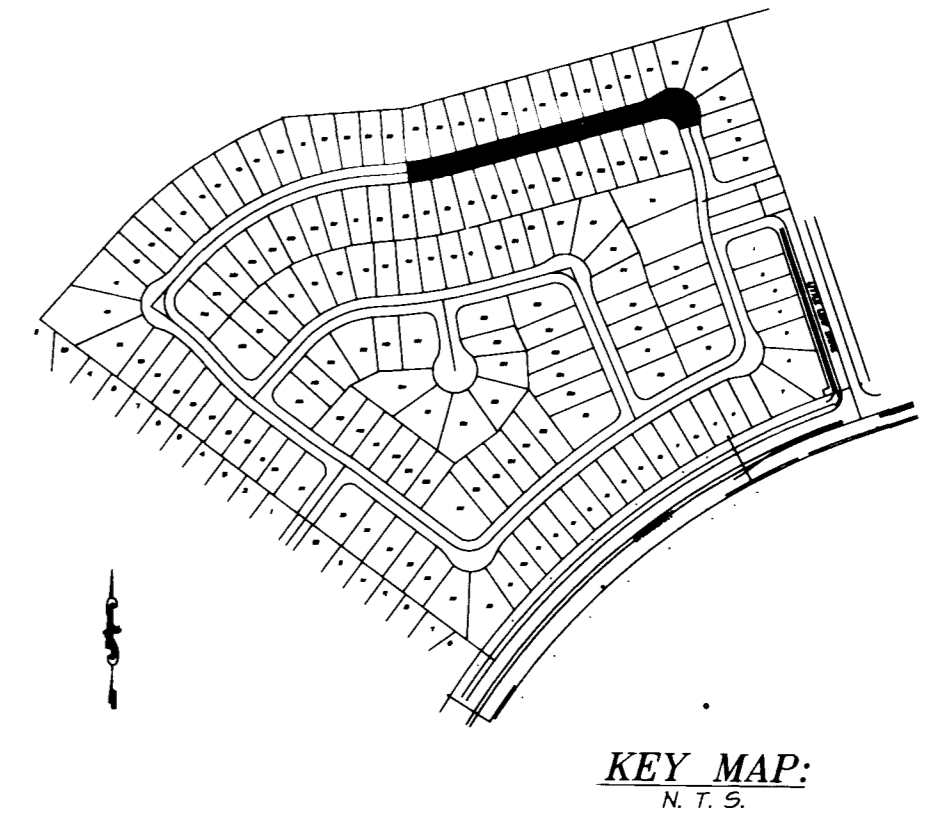


MATCHLINE - SEE SHEET 15



CHANGING SEASONS STREET
SEE SHEET 17



KEY MAP:
N.T.S.

LEGEND:

- 100.00 DESIGN ELEVATION
- (100.00) EXISTING ELEVATION
- AC ASPHALTIC CONCRETE
- TC TOP OF CURB
- FG FINISH GRADE
- GB GRADE BREAK
- HP HIGH POINT
- FE FINISH FLOOR
- FL FLOWLINE
- SLOPE DIRECTION
- SWALE FLOWLINE
- GRADE BREAK
- 1 EXISTING CONTOUR (1' INTERVAL)
- 2 EXISTING CONTOUR (5' INTERVAL)
- 10 CONSTRUCTION NOTES
- 10 LOT NUMBER
- PROPOSED WATER LINE
- 2 BLOCK NUMBER
- PROPOSED FIRE HYDRANT
- PROPOSED SEWER LINE W/MANHOLE

SCALE: HORZ: 1"=30'
VERT.: 1"=3'

SEWER KEY NOTES:

- (A) CONSTRUCT STANDARD ECCENTRIC MANHOLE PER D.C.S.W.C. PLATE SD-1
- (B) INSTALL TEMP. 4" SEWER CLEANOUT POINT OF CONNECTION
- (C) INSTALL SEWER MAIN (SIZE AS INDICATED ON PLAN) TRENCH SECTION BACKFILL PER D.C.S.W.C.S. NO. SD-16, SD-16A
- (D) INSTALL SEWER LATERAL PER D.C.S.W.C.S. NO. SD-17

BACK OF CURVE & STREET C/L CURVE DATA

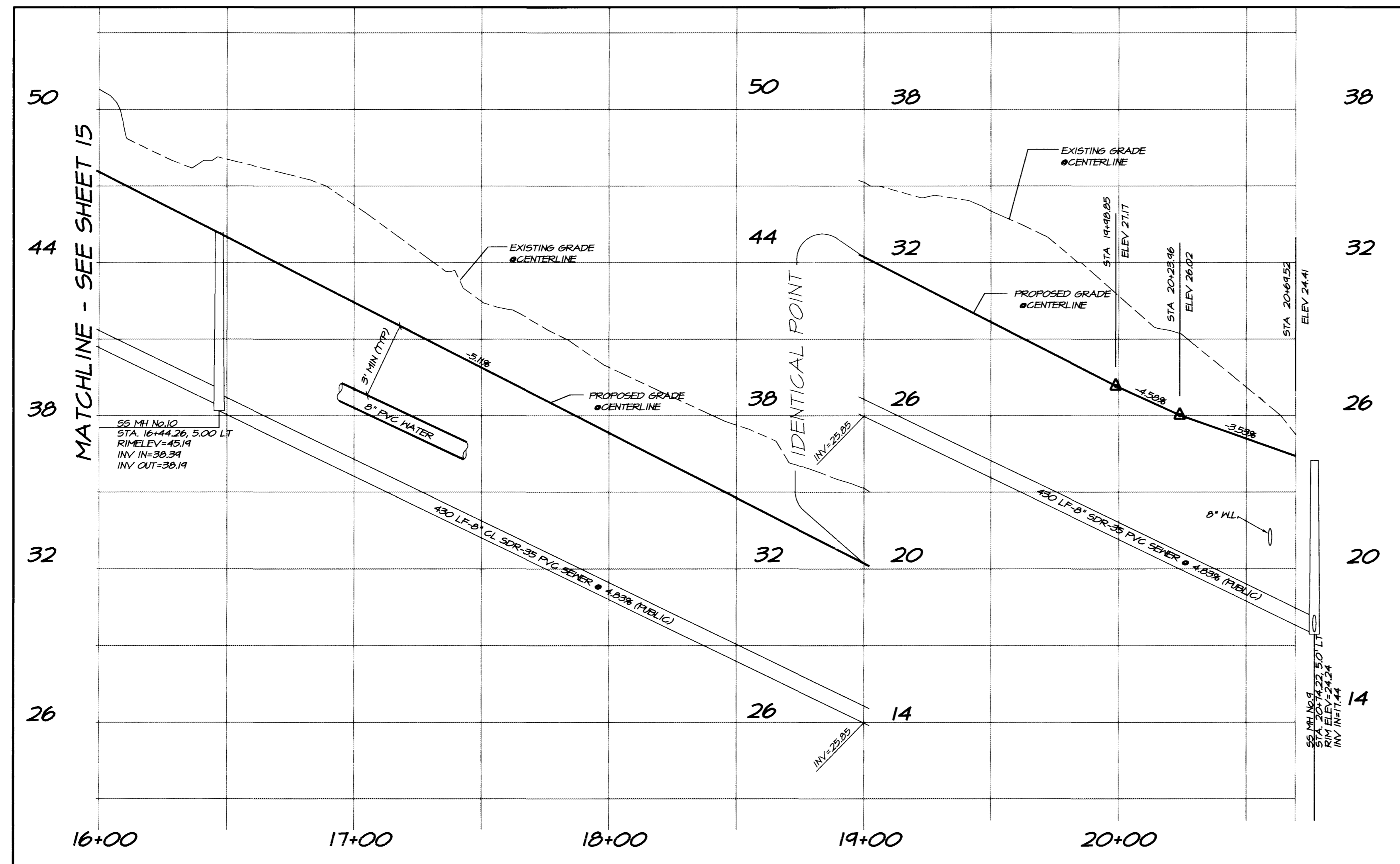
CURVE	RADIUS	LENGTH	DELTA
C61	30.00'	45.25'	86°25'24"
C63	100.00'	37.10'	21°15'20"
C64	47.00'	105.77'	128°56'04"

LINE	DIRECTION	DISTANCE
L27	S 74°54'30" W	425.26'
L30	S 74°54'30" W	379.70'
L31	S 74°54'30" W	354.59'

SIDEWALK RAMP TABLE:

RAMP	"A"	"B"
SW1	8.0	8.0
SW2	21.5	4.5
SW3	4.5	4.5
SW4	4.5	21.5
SW5	4.5	9.5
SW6	15.	4.5
SW7	9.5	4.5

WHOOPING CRANE LANE
(PUBLIC)



MATCHLINE - SEE SHEET 15

KEY NOTES:

- (1) CONSTRUCT 2" AC PAVING OVER 4" TYPE II BASE ON 6" TYPE I BASE PER SIS S-14. SEE SHEET 23 FOR STREET SECTION.
- (2) CONSTRUCT 8" WIDE CROSS GUTTER PER SIS S-64.
- (3) CONSTRUCT SIDEWALK RAMP PER SIS S-77, CASE I. REFER TO SIDEWALK RAMP TABLE FOR "A" AND "B" LENGTHS.
- (4) SIGHT VISIBILITY EASEMENT PER STD. DWG. 404.1600, B = 131 FT.
- (5) CONSTRUCT "A" CURB PER SIS S-50.
- (6) CONSTRUCT "L" CURB PER SIS S-47.
- (7) CONSTRUCT 2" VALLEY GUTTER PER DETAIL J ON SHEET 23.
- (8) SIDEWALK (BY OTHERS)
- (9) SIGHT VISIBILITY RESTRICTION EASEMENTS PER SD 404.1600
- (10) CONSTRUCT 4" SIDEWALK PER UNIFORM STD. DRAWINGS CLARK COUNTY AREA NO. 234

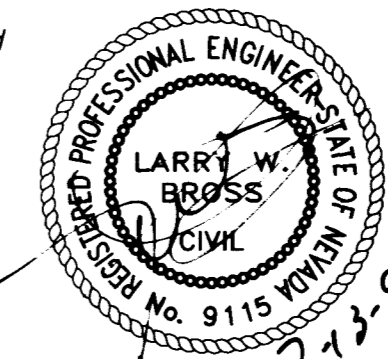
BASIS OF BEARING

BASIS OF BEARING OF THIS DESCRIPTION IS THE CENTERLINE OF ANASAZI DRIVE SHOWN AS NORTH 15°23'46" EAST ON THE MAP IN BOOK 64 OF PLATS, PAGE 67 OFFICIAL RECORDS OF CLARK COUNTY, NEVADA

BENCHMARK

CITY OF LAS VEGAS BENCHMARK 0LV001954 RIVET & PLATE IN TOP OF CURB NW SIDE OF TOWN CENTER DRIVE & SOUTH CIRCLE ISLAND. ELEVATION = 2728.37 NAVD 1988 (831.6074 M)

Avoid cutting underground utility lines. It's costly.
Call before you Dig
1-800-227-2600
UNDERGROUND SERVICE (USA)



Quality Control checked by:

PREPARED BY: Planning
Hunsaker Associates
401 N. BUFFALO DR. SUITE 100
LAS VEGAS, NEVADA 89102
(702) 542-4600

San Bernardino • San Diego • Las Vegas
Irvine • San Bernardino • San Diego • Las Vegas
DOCUMENT NO. 1506-ST
CAD FILE NAME: 1506-ST
PLOT DATE: 27/OCT/97

NO.	DESCRIPTION	BY	DATE	APPR.

FALLBROOK
LAS VEGAS, NEVADA

STREET & SEWER
PLAN & PROFILE

SCALE(H): 1"= 30'
SCALE(V): 1"= 3'
DES. BY: CH
DWN. BY: LDB
DATE: OCT/97
PROJECT NO.
1506-22
SHEET
16 OF 25

