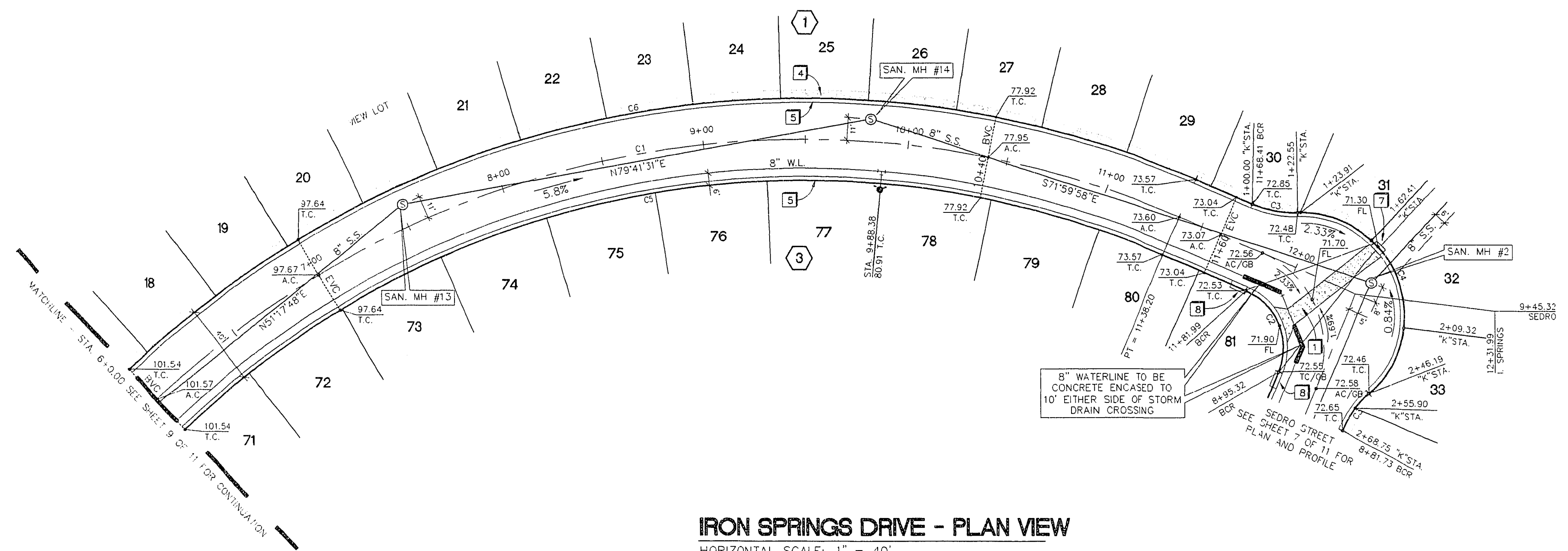
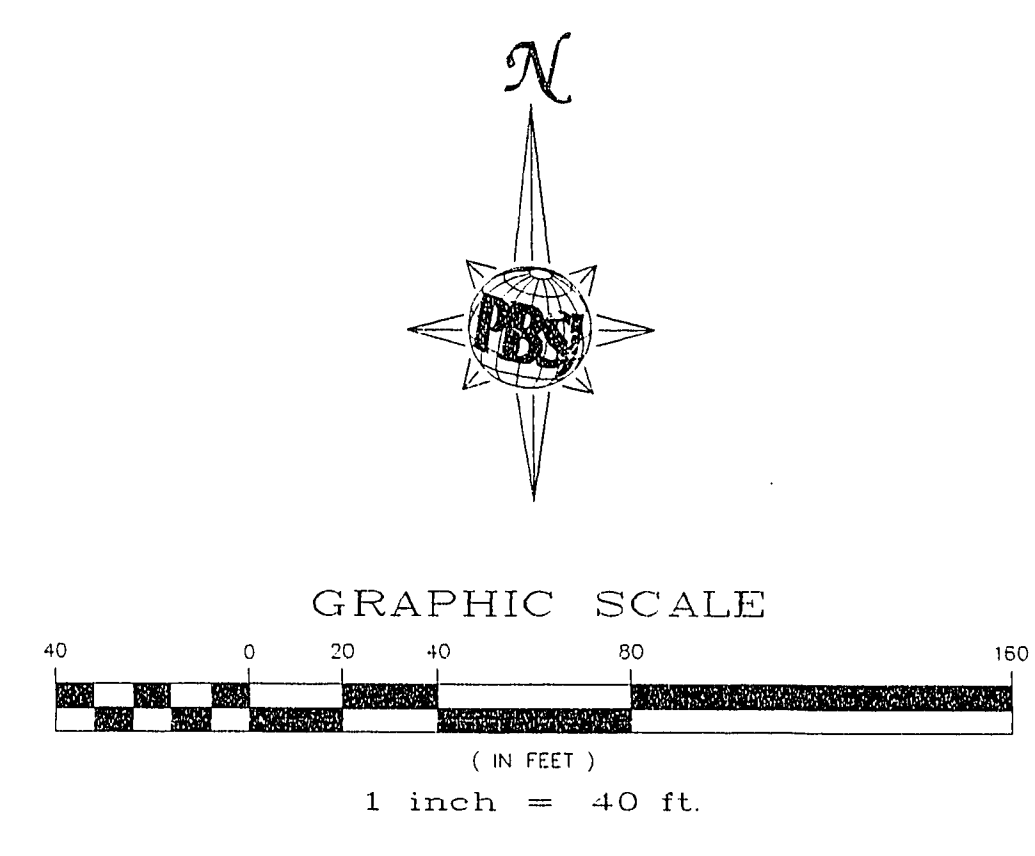


Call before you Dig
1-800-227-2600



IRON SPRINGS DRIVE - PLAN VIEW
HORIZONTAL SCALE: 1" = 40'

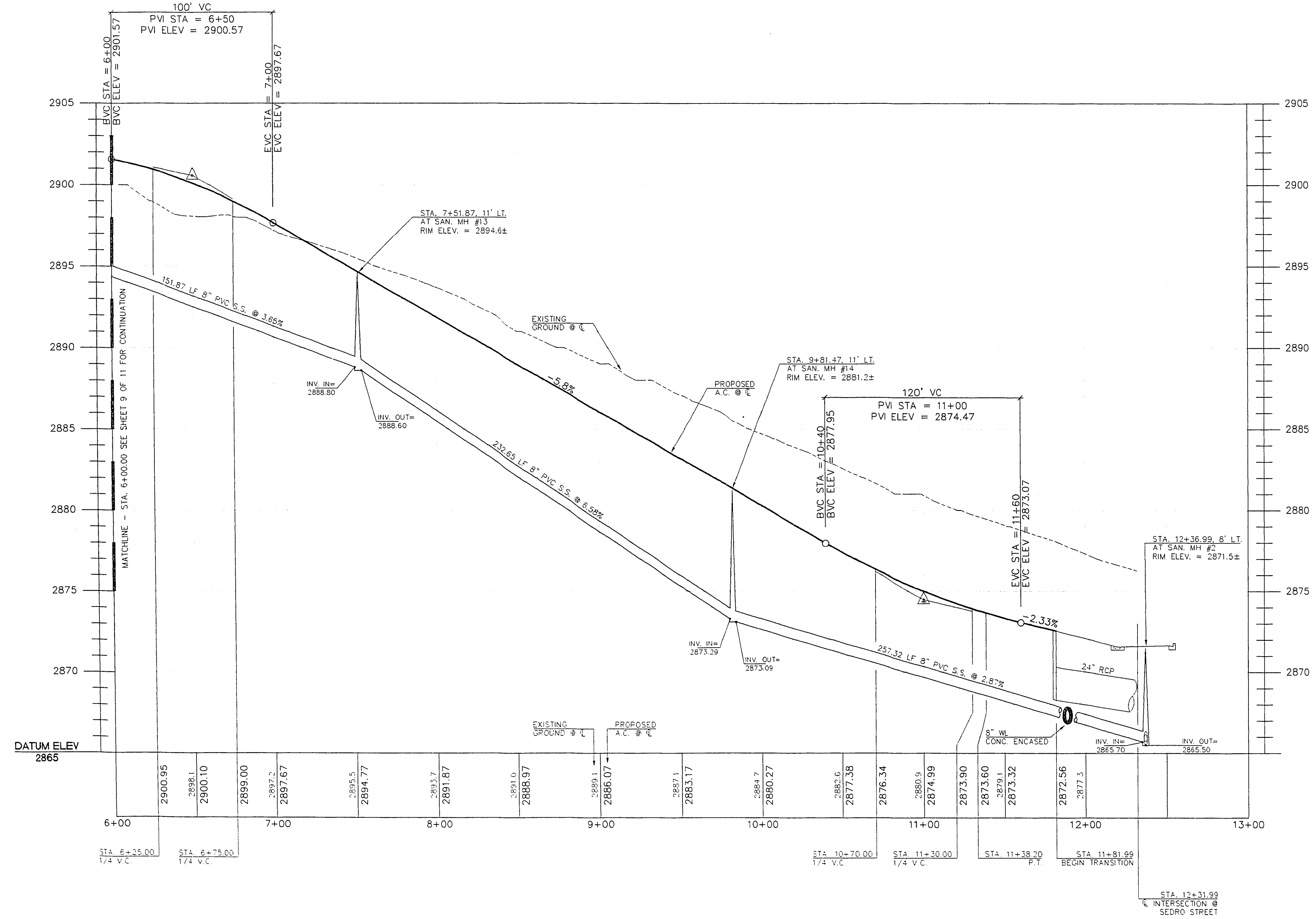


CENTERLINE CURVE DATA TABLE

No.	RADIUS	DELTA	LENGTH	TANGENT
C1	462.26'	86°42'31"	538.20'	304.27'

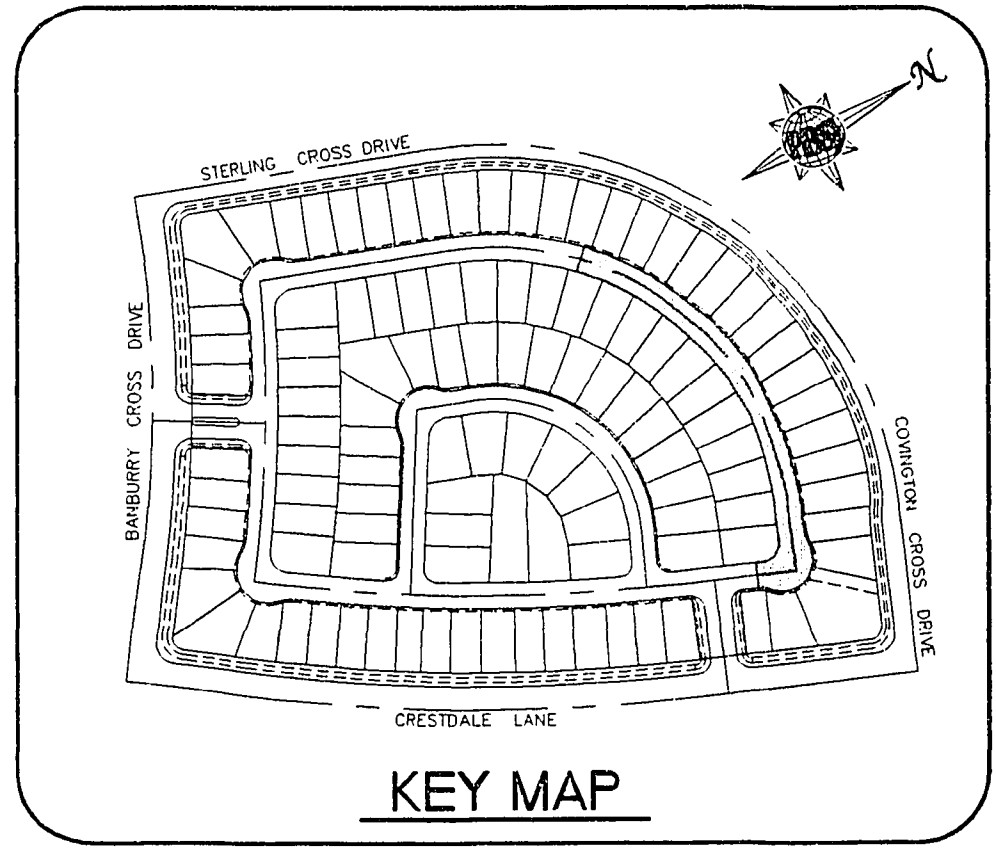
BACK OF CURB CURVE DATA TABLE

No.	RADIUS	DELTA	LENGTH	TANGENT
C2	30.00'	90°00'00"	47.12'	30.00'
C3	50.00'	25°50'31"	22.25'	11.47'
C4	50.00'	141°41'02"	133.64'	143.92'
C5	442.26'	66°42'31"	514.91'	291.11'
C6	482.26'	66°42'31"	561.48'	317.44'



IRON SPRINGS DRIVE - PROFILE
HORIZONTAL SCALE: 1" = 40'
VERTICAL SCALE: 1" = 5'

- CONSTRUCTION NOTES**
1. CONSTRUCT 8" CONCRETE VALLEY GUTTER PER SUMMERLIN IMPROVEMENT STANDARD DWG. NO. S-64.
 4. CONSTRUCT 4" WIDE CONCRETE SIDEWALK PER SUMMERLIN IMPROVEMENT STANDARD DWG. NO. S-72.
 5. CONSTRUCT "L" TYPE CURB & GUTTER PER SUMMERLIN IMPROVEMENT STANDARD DWG. NO. S-47.
 7. 4" TYPE "C" DROP INLET PER SUMMERLIN IMPROVEMENT STANDARD DWG. NO. D-14.
 8. 10" TYPE "C" DROP INLET PER SUMMERLIN IMPROVEMENT STANDARD DWG. NO. D-14.
- GENERAL NOTES**
1. ALL STATIONING IS CENTERLINE STATIONING UNLESS OTHERWISE NOTED.
 2. SEWER LENGTHS ARE FROM CENTER OF MANHOLE TO CENTER OF MANHOLE.
 3. "K" STA. INDICATES KNUCKLE STATIONING AT BACK OF CURB.



Date	Appr.	Date	Appr.

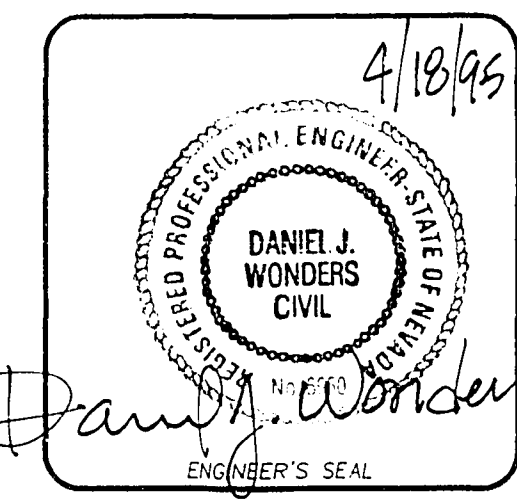
6600 West Charleston Blvd.
Las Vegas, Nevada 89121
Tel: 702/732-7278
Fax: 702/732-7278

POST, BUCKLEY, SCHLUH & JERNICAN
ENGINEERING - PLANNING - SURVEYING - CONSTRUCTION SERVICES

HIGHLAND HILLS

IRON SPRINGS DRIVE
STA. 6+00.00 TO 12+31.99
PLAN AND PROFILE

Drawn by Scale 1" = 40'
DIB
Checked by File No.
MJP 700IMP
Date APRIL 04, 1995
10 OF 11
PLOT DATE: 04-04-95



11-21-143

107Y-4394