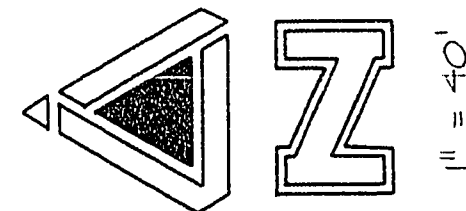


# PACIFIC BAY UNIT NO. 2

A PORTION OF THE NW1/4 OF THE SE1/4 OF SECTION 2, T. 21 S.,  
R. 60 E., M.D.M., CITY OF LAS VEGAS, CLARK COUNTY, NEVADA

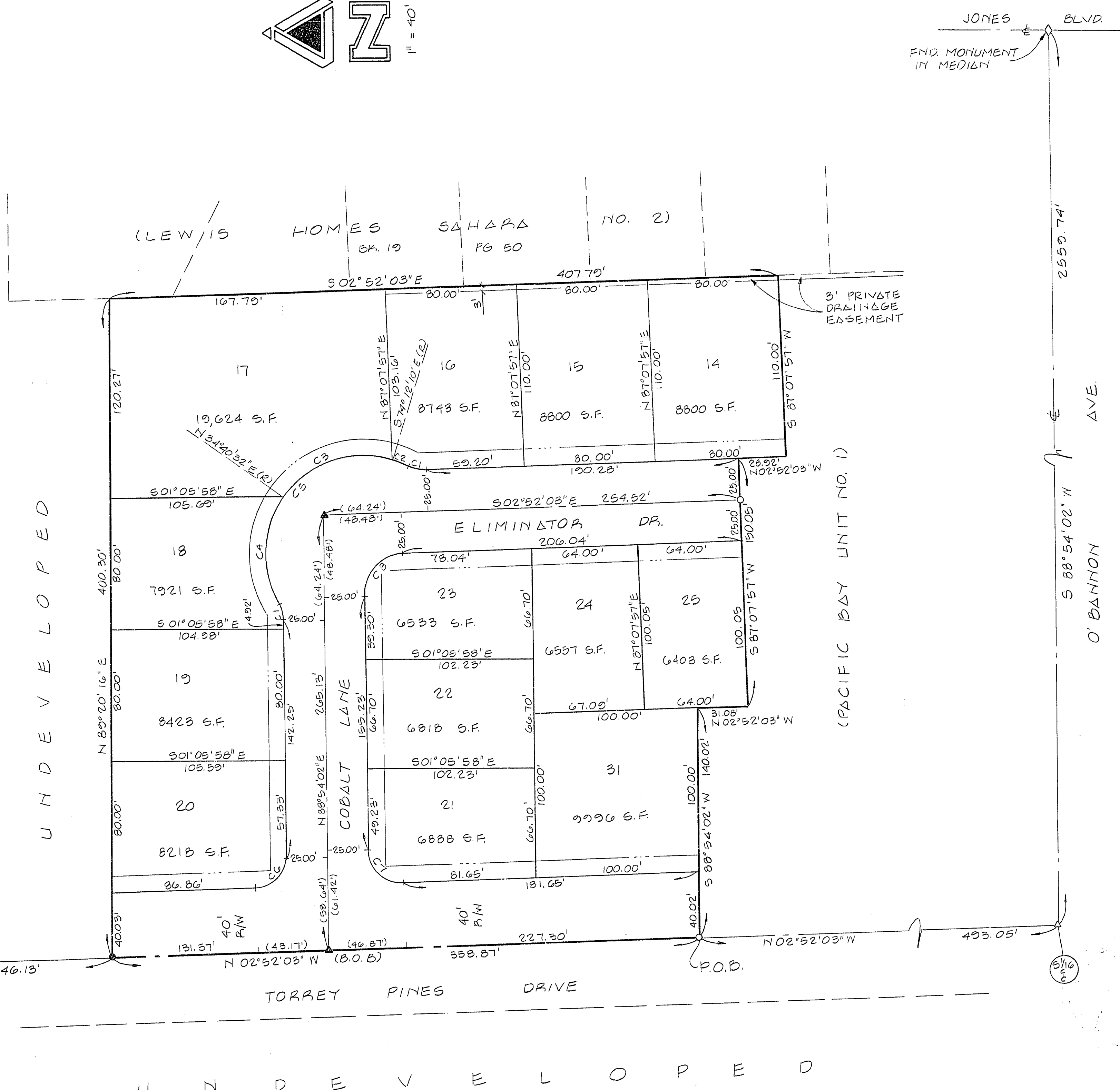


### CURVE DATA

No.	DELTA	RADIUS	LENGTH	TANGENT
C1	28° 04' 21"	25.00'	12.25'	6.25'
C2	9° 24' 28"	60.00'	9.85'	4.94'
C3	71° 07' 18"	60.00'	74.48'	42.89'
C4	63° 50' 51"	60.00'	66.86'	37.38'
C5	144° 22' 37"	60.00'	151.19'	186.75'
C6	88° 13' 55"	20.00'	30.80'	19.39'
C7	91° 46' 05"	20.00'	32.03'	20.63'
C8	88° 13' 55"	25.00'	38.50'	24.24'

### LEGEND

- FOUND 5/8" REBAR & AL. CAP - R.L.S. 6030
- △ FOUND 5/8" REBAR & AL. CAP - R.L.S. 6030 WITH BRASS CAP TIES IN TOP OF CURB
- ◇ POINT FOUND AS DESCRIBED
- SET 5/8" REBAR & AL. CAP - R.L.S. 6030
- ▲ SET 5/8" REBAR & AL. CAP - R.L.S. 6030 WITH BRASS CAP TIES IN TOP OF CURB
- 17 LOT NUMBER
- C3 CURVE DATA REFERENCE NUMBER
- EASEMENT BOUNDARY
- SETBACK LINE:  
FRONT - 10' MIN.  
SIDE - 10' MIN. (TOTAL)  
16' MIN. TO GARAGE DOOR
- P.O.B. POINT OF BEGINNING



- FOR REFERENCE ONLY -



ALCA  
ENGINEERING & SURVEYING, INC.  
CIVIL ENGINEERING & LAND SURVEYING  
820 S. VALLEY VIEW BLVD., LAS VEGAS, NV 89107-4411  
(702) 878-3358