

PAINTED DESERT

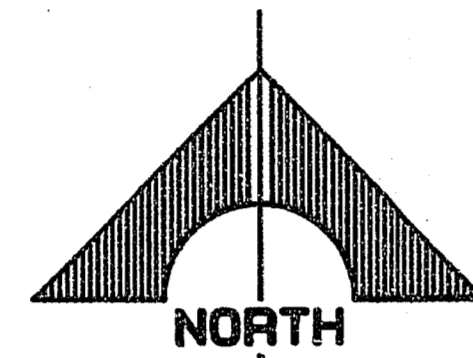
A PLANNED RESIDENTIAL DEVELOPMENT

A PORTION OF THE N1/2 AND THE SE1/4 OF SECTION 34 AND A PORTION OF THE N1/2 OF SECTION 33, T 19 S, R 60 E, M.D.M., CITY OF LAS VEGAS, CLARK COUNTY, NEVADA.

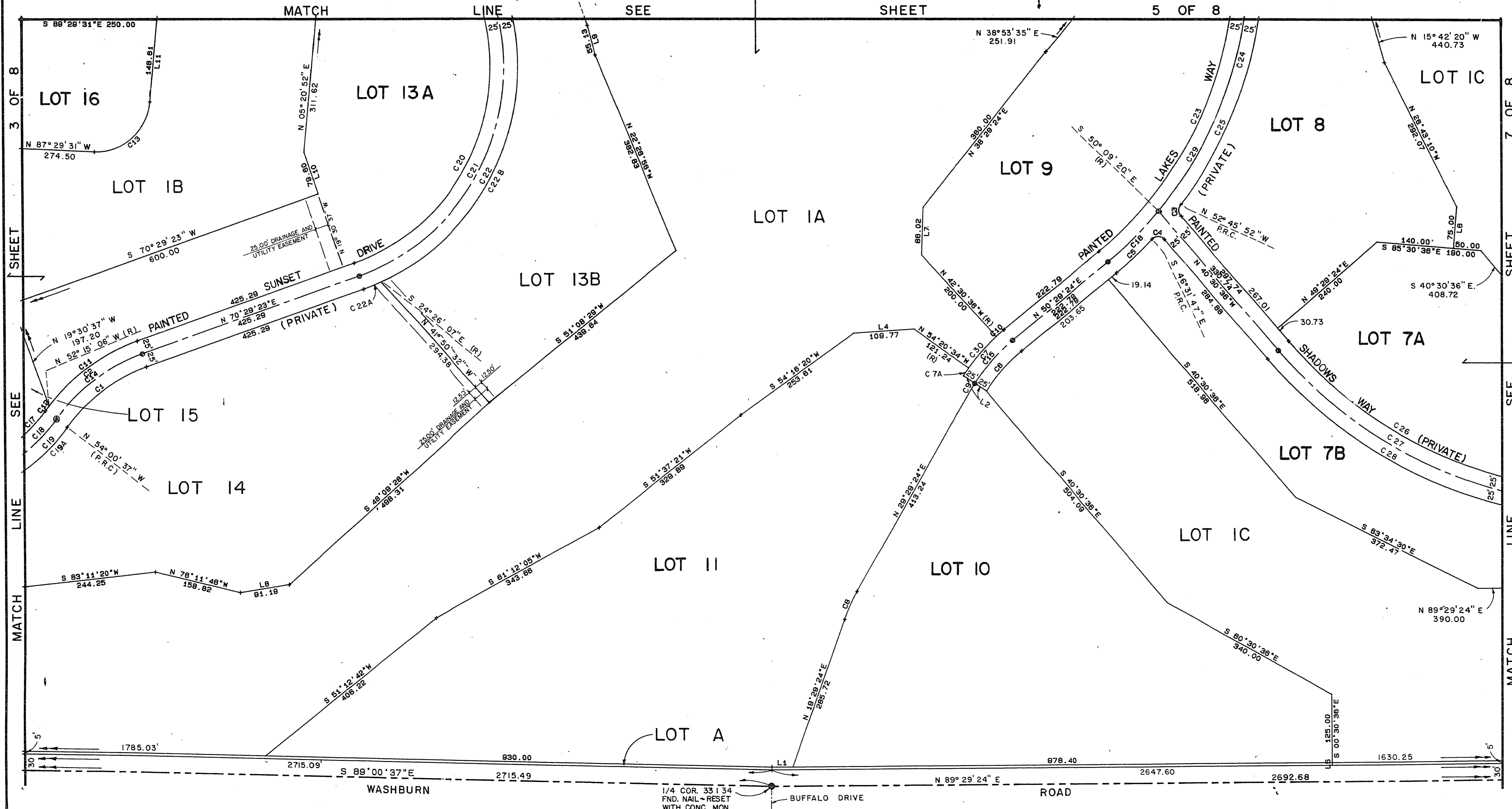
CURVE	DELTA	ARC	RADIUS	TANGENT
1	34°30'00"	186.86	310.00	98.26
2	34°30'00"	216.77	360.00	111.78
3	77°44'44"	20.35	15.00	12.09
4	96°01'11"	25.14	15.00	16.66
5	7°01'11"	89.44	730.00	44.77
6	17°28'30"	97.60	320.00	49.18
7	17°28'30"	112.85	370.00	56.87
8	10°00'00"	55.85	320.00	28.00
9	3°31'30"	21.23	345.00	10.62
10	3°00'00"	19.37	370.00	9.69
11	32°44'29"	205.72	360.00	105.75
12	1°45'31"	11.05	360.00	5.53
13	87°09'37"	152.12	100.00	95.16
14	34°30'00"	201.72	335.00	104.02
15	17°28'30"	105.22	345.00	53.02
16	10°38'44"	130.99	705.00	65.68
17	55°00'00"	297.58	310.00	161.38
18	55°00'00"	321.58	335.00	174.39
19	55°00'00"	345.58	360.00	187.40
20	108°00'00"	713.76	378.66	521.18
21	108°00'00"	760.88	403.66	555.59
22	108°00'00"	808.01	428.66	590.00
23	45°59'42"	545.88	680.00	288.61
24	35°20'58"	434.96	705.00	224.65
25	32°44'26"	417.14	730.00	214.44
26	50°00'00"	676.32	775.00	361.39
27	50°00'00"	698.13	800.00	373.05
28	50°00'00"	719.95	825.00	384.70
29	45°59'42"	565.95	705.00	299.22

LINE	BEARING	DISTANCE
1	N 89°29'24"E	38.89
2	N 56°59'06"W (R)	25.00
4	S 85°58'53"W	109.77
5	S 00°30'36"E	5.00
6	N 04°29'24"E	75.00
7	N 02°03'31"E	86.02
8	S 80°22'37"W	91.19
9	N 15°11'57"W	55.13
10	N 19°30'37"W	79.60
11	N 05°20'52"E	148.61

CURVE	DELTA	ARC	RADIUS	TANGENT
30	11°49'58"	76.41	370.00	38.34
22A	04°55'30"	36.85	428.66	18.43
7A	02°38'32"	17.06	370.00	8.53
22B	103°04'30"	771.16	428.66	539.62
19A	28°28'41"	178.93	360.00	91.35



SCALE: 1" = 100'



1/4 COR. 33 | 34
FND. NAIL - RESET
WITH CONC. MON.