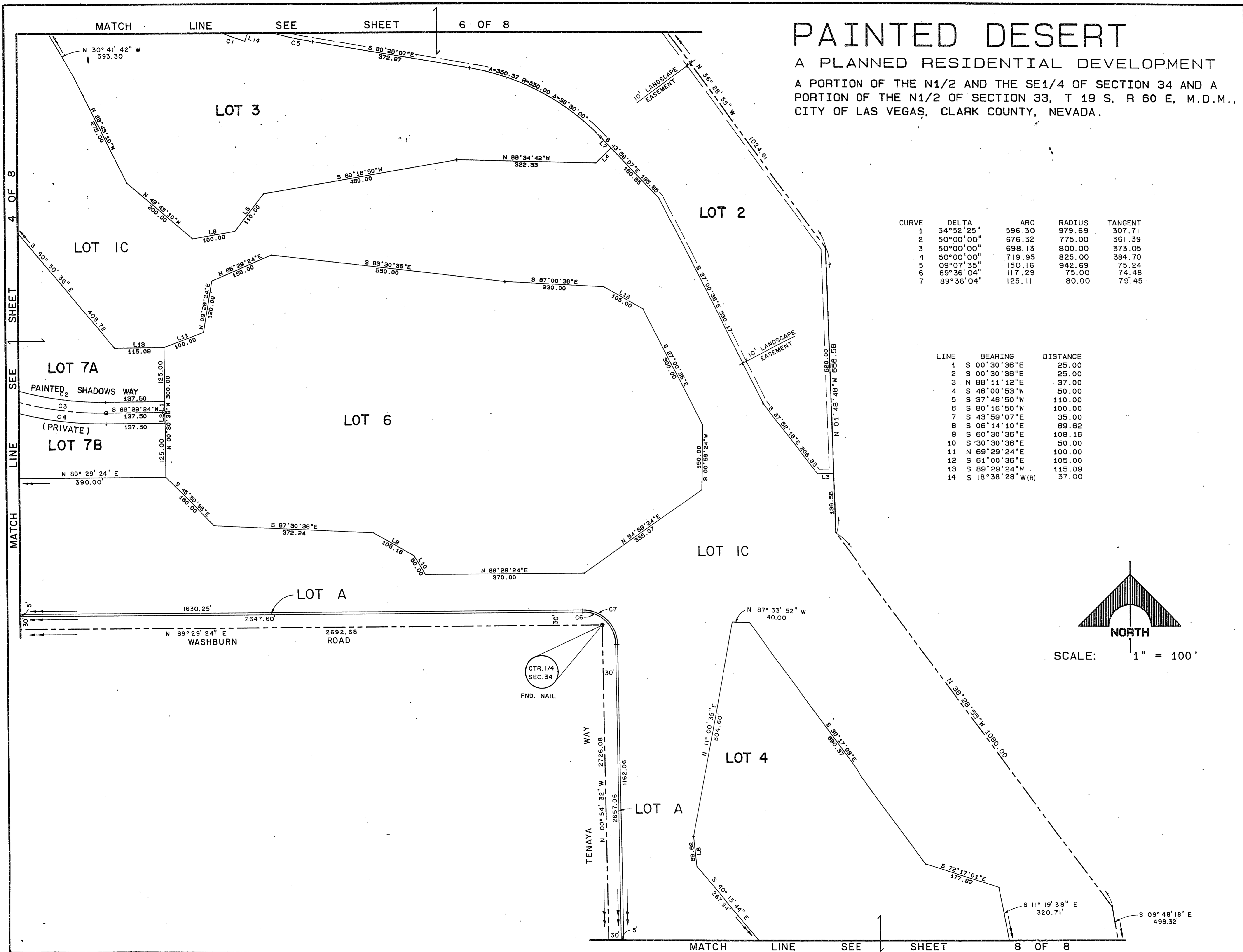


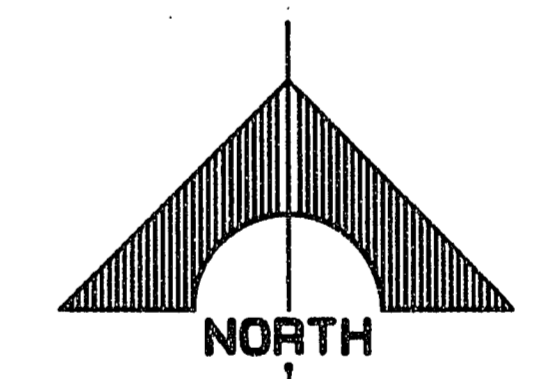
PAINTED DESERT

A PLANNED RESIDENTIAL DEVELOPMENT
 A PORTION OF THE N1/2 AND THE SE1/4 OF SECTION 34 AND A
 PORTION OF THE N1/2 OF SECTION 33, T 19 S, R 60 E, M.D.M.,
 CITY OF LAS VEGAS, CLARK COUNTY, NEVADA.



CURVE	DELTA	ARC	RADIUS	TANGENT
1	34°52'25"	596.30	979.69	307.71
2	50°00'00"	676.32	775.00	361.39
3	50°00'00"	698.13	800.00	373.05
4	50°00'00"	719.95	825.00	384.70
5	09°07'35"	150.16	942.69	75.24
6	89°36'04"	117.29	75.00	74.48
7	89°36'04"	125.11	80.00	79.45

LINE	BEARING	DISTANCE
1	S 00°30'36"E	25.00
2	S 00°30'36"E	25.00
3	N 88°11'42"E	37.00
4	S 46°00'53"W	50.00
5	S 37°46'50"W	110.00
6	S 80°16'50"W	100.00
7	S 43°59'07"E	35.00
8	S 06°14'10"E	69.62
9	S 60°30'36"E	108.16
10	S 30°30'36"E	50.00
11	N 69°29'24"E	100.00
12	S 61°00'36"E	105.00
13	S 89°29'24"W	115.08
14	S 18°38'28"W(R)	37.00



SCALE: 1" = 100'

MATCH LINE SEE SHEET 4 OF 8

MATCH LINE SEE SHEET 8 OF 8