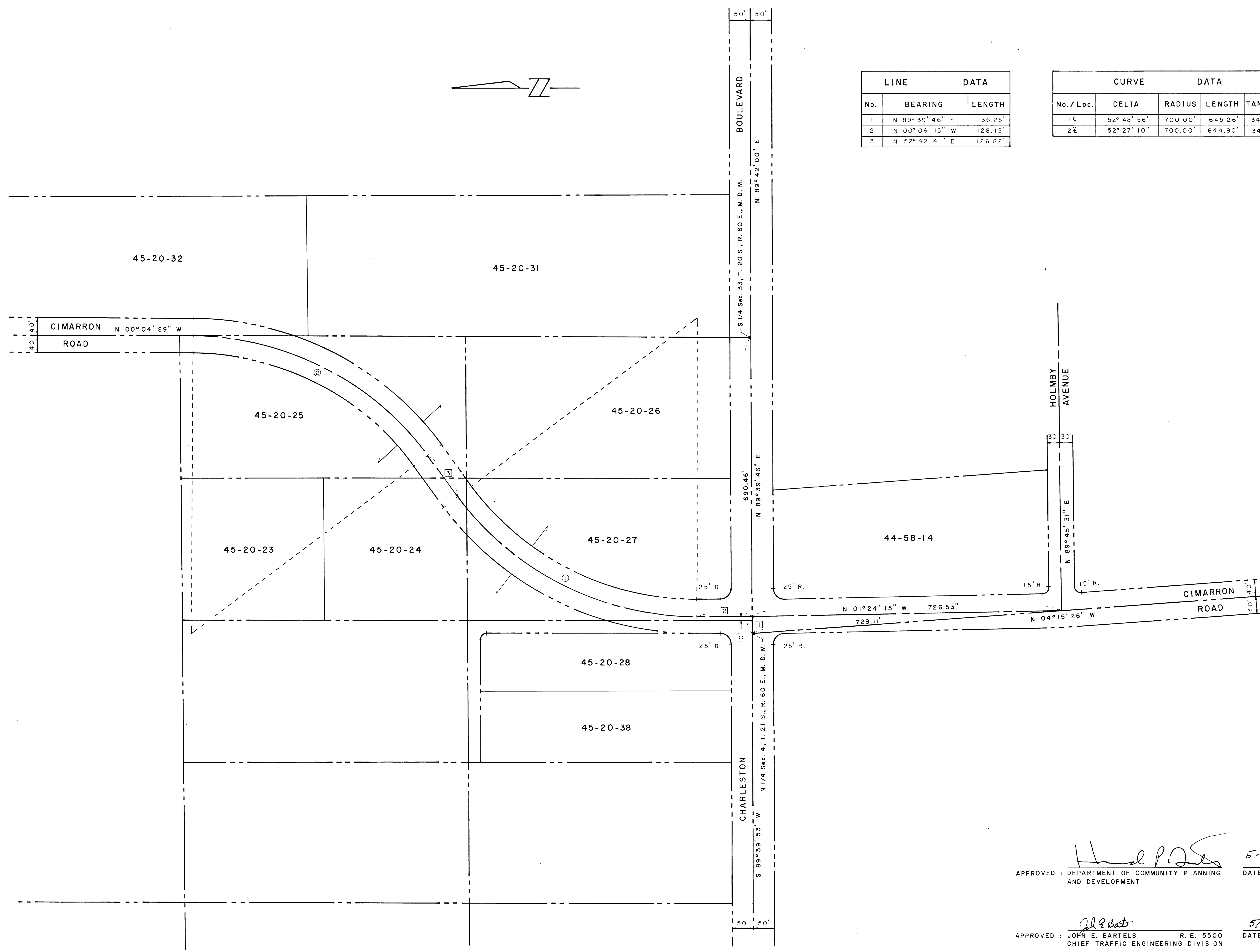
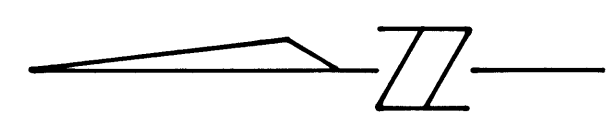



14-5-125

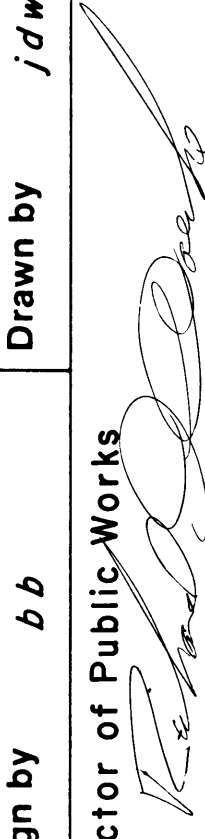


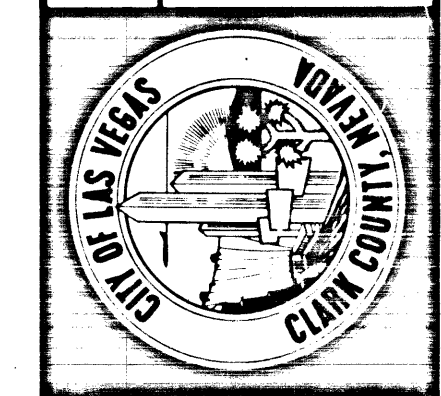
LINE DATA		
No.	BEARING	LENGTH
1	N 89° 39' 46" E	36.25'
2	N 00° 06' 15" W	128.12'
3	N 52° 42' 41" E	126.82'

CURVE DATA				
No. / Loc.	DELTA	RADIUS	LENGTH	TANGENT
1 @	52° 48' 56"	700.00'	645.26'	347.60'
2 @	52° 27' 10"	700.00'	644.90'	347.38'

APPROVED:  DATE: 5-21-86
 DEPARTMENT OF COMMUNITY PLANNING AND DEVELOPMENT

APPROVED:  DATE: 5/14/86
 JOHN E. BARTELS R. E. 5500
 CHIEF TRAFFIC ENGINEERING DIVISION

Department of Public Works Engineering Design Division PORTIONS OF SECTIONS 33, T. 20 S., R. 60 E., M. D. M. AND SECTION 4, T. 21 S., R. 60 E., M. D. M.	Scale (H) 1" = 100' Fid. bk. no. _____ Design by <i>bb</i> Director of Public Works 	Scale (V) _____ Date 05-09-86 Drawn by <i>jdw</i>	W.Q. 3336	PRELIMINARY ALIGNMENT 9-87
	CIMARRON ROAD AT CHARLESTON BOULEVARD PRELIM ALIGNMENT			Revisions Date



Drawing no. 115-372