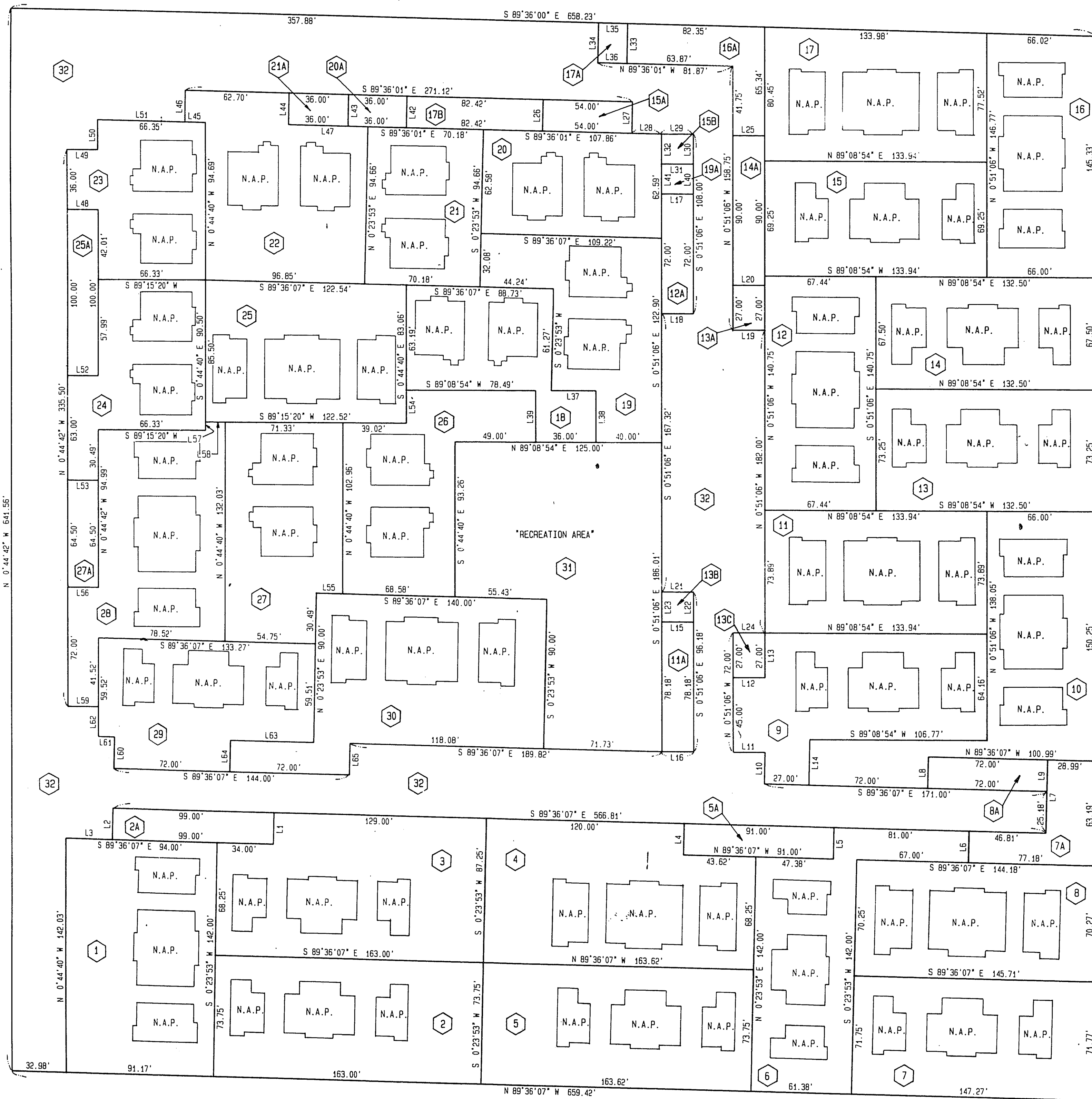


PIRATES COVE CONDOMINIUMS - UNIT 2

(A COMMON INTEREST COMMUNITY CONDOMINIUM DEVELOPMENT)
BEING PARCEL 2 OF FILE 55 OF PARCEL MAPS, PAGE 6
A PORTION OF SECTION 27, T.20 S., R.60 E., M.D.M.,
CITY OF LAS VEGAS, CLARK COUNTY, NEVADA

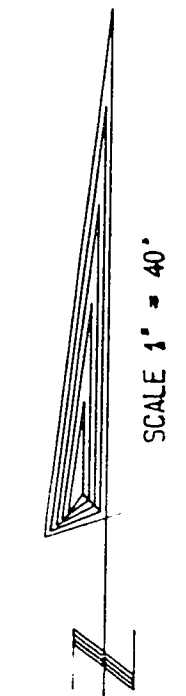
COURSE TABLE

LINE	BEARING	DISTANCE
L1	N 0°23'53" E	19.00
L2	N 0°23'53" E	19.00
L3	S 89°36'07" E	29.00
L4	S 0°23'53" W	19.00
L5	S 0°23'53" W	19.00
L6	S 0°23'53" W	19.00
L7	N 0°23'53" E	44.18
L8	N 0°23'53" E	19.00
L9	S 0°23'53" W	19.00
L10	N 0°23'53" E	19.00
L11	S 89°08'54" W	19.00
L12	N 89°08'54" E	19.00
L13	N 0°51'06" W	27.00
L14	S 0°23'53" W	27.43
L15	N 89°08'54" E	19.00
L16	S 89°08'54" W	19.00
L17	N 89°08'54" E	19.00
L18	S 89°08'54" W	19.00
L19	S 89°08'54" E	19.00
L20	N 89°08'54" E	19.00
L21	N 89°08'54" E	19.00
L22	S 0°51'06" E	18.00
L23	S 0°51'06" E	18.00
L24	N 89°08'54" E	19.00
L25	N 89°08'54" E	19.00
L26	N 0°23'59" E	19.00
L27	S 0°23'59" W	19.00
L28	S 89°36'01" E	18.00
L29	N 89°08'54" E	19.00
L30	S 0°51'06" E	18.00
L31	S 89°08'54" W	19.00
L32	N 0°51'06" W	18.00
L33	N 0°24'00" E	24.00
L34	N 0°24'00" E	24.00
L35	S 89°36'00" E	18.00
L36	S 89°36'01" E	18.00
L37	N 89°08'54" E	27.00
L38	S 0°51'06" E	31.00
L39	N 0°51'06" W	31.00
L40	S 0°51'06" E	18.00
L41	N 0°51'06" W	18.00
L42	N 0°23'59" E	19.00
L43	N 0°23'59" E	19.00
L44	S 0°23'59" W	19.00
L45	N 89°36'01" W	12.35
L46	N 0°23'59" E	19.00
L47	S 89°36'01" E	48.39
L48	S 89°15'18" W	19.00
L49	N 89°15'18" E	19.00
L50	N 0°44'42" W	18.00
L51	S 89°36'01" E	54.00
L52	N 89°15'18" W	19.00
L53	S 89°15'18" W	19.00
L54	N 0°44'40" W	19.87
L55	N 89°36'07" W	15.98
L56	S 89°15'18" W	19.00
L57	N 0°44'40" W	5.00
L58	N 89°15'20" E	12.17
L59	S 89°15'18" W	19.00
L60	N 0°23'53" E	19.00
L61	N 89°36'07" W	19.00
L62	N 0°44'42" W	18.00
L63	N 89°36'07" W	50.08
L64	S 0°23'53" W	19.00
L65	S 0°23'53" W	19.00



LEGEND

- 14 COMMON ELEMENT DESIGNATION
- L1 COURSE NUMBER
- N.A.P. NOT A PART



COMMON ELEMENT LOT TABULATION TABLE

LOT NO. 1 =	9,723 S.F.	LOT NO. 15B =	342 S.F.
LOT NO. 2 =	9,581 S.F.	LOT NO. 16 =	6,215 S.F.
LOT NO. 2A =	1,881 S.F.	LOT NO. 16A =	2,772 S.F.
LOT NO. 3 =	11,136 S.F.	LOT NO. 17 =	7,156 S.F.
LOT NO. 4 =	10,023 S.F.	LOT NO. 17A =	432 S.F.
LOT NO. 5 =	9,627 S.F.	LOT NO. 17B =	1,566 S.F.
LOT NO. 5A =	1,729 S.F.	LOT NO. 18 =	4,400 S.F.
LOT NO. 6 =	7,815 S.F.	LOT NO. 19 =	6,573 S.F.
LOT NO. 7 =	8,071 S.F.	LOT NO. 19A =	342 S.F.
LOT NO. 7A =	2,765 S.F.	LOT NO. 20 =	4,594 S.F.
LOT NO. 8 =	6,758 S.F.	LOT NO. 20A =	684 S.F.
LOT NO. 8A =	1,368 S.F.	LOT NO. 21 =	4,446 S.F.
LOT NO. 9 =	7,742 S.F.	LOT NO. 21A =	684 S.F.
LOT NO. 10 =	8,838 S.F.	LOT NO. 22 =	8,251 S.F.
LOT NO. 11 =	6,473 S.F.	LOT NO. 23 =	4,811 S.F.
LOT NO. 11A =	1,485 S.F.	LOT NO. 24 =	5,002 S.F.
LOT NO. 12 =	6,069 S.F.	LOT NO. 25 =	6,902 S.F.
LOT NO. 12A =	1,368 S.F.	LOT NO. 25A =	1,900 S.F.
LOT NO. 13 =	7,266 S.F.	LOT NO. 26 =	7,015 S.F.
LOT NO. 13A =	513 S.F.	LOT NO. 27 =	6,774 S.F.
LOT NO. 13B =	342 S.F.	LOT NO. 27A =	1,226 S.F.
LOT NO. 13C =	513 S.F.	LOT NO. 28 =	7,915 S.F.
LOT NO. 14 =	6,504 S.F.	LOT NO. 29 =	6,824 S.F.
LOT NO. 14A =	1,710 S.F.	LOT NO. 30 =	10,544 S.F.
LOT NO. 15 =	6,836 S.F.	LOT NO. 31 =	18,204 S.F.
LOT NO. 15A =	1,026 S.F.	LOT NO. 32 =	77,999 S.F.

ACT	DATE	BY	REVISION

BOOK 55 PAGE 38
53-15b Plat for 107-11522