

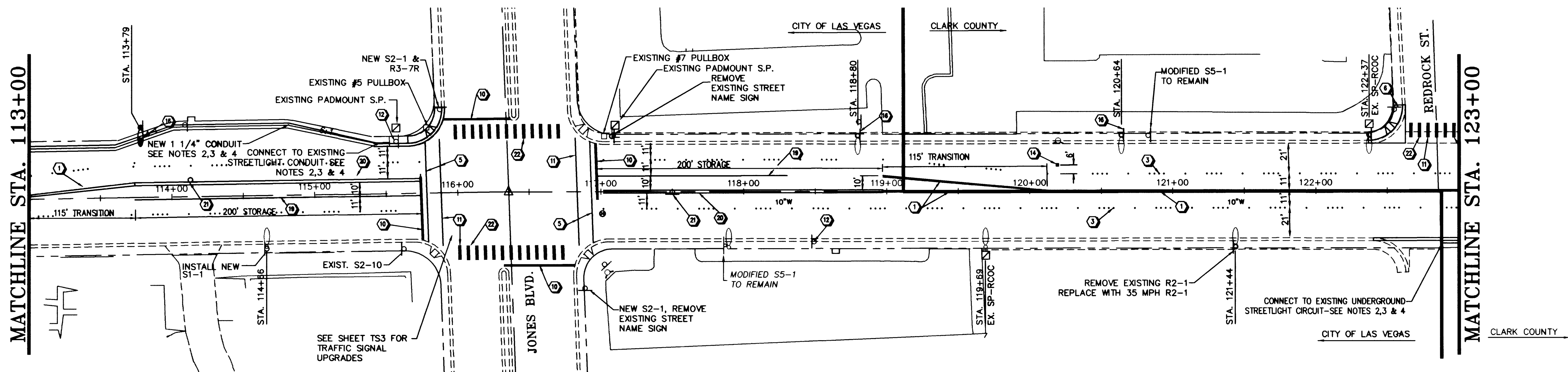
STREET LIGHTING NOTES

1. ALL STREET LIGHTS SHALL BE II GAGE SHAFTS WITH 200W HPS LUMINAIRE. ARM LENGTH = 8 FEET. SEE CLARK COUNTY AREA UNIFORM STD. DWGS. NO. 309 AND 318.
2. WHERE IT IS NECESSARY TO CONNECT STREET LIGHTS TO AN EXISTING UNDERGROUND CIRCUIT, THE CONTRACTOR SHALL VERIFY THE EXISTENCE OF A CONDUIT STUB OUT FROM THE POLE FOUNDATION OR LOCATION AT WHICH THE CONNECTION IS TO BE MADE. SHOULD SUCH STUB-OUTS BE MISSING, THE EXISTING FOUNDATION SHALL BE MODIFIED PER CLARK COUNTY AREA UNIFORM STD. DWG. NO. 320.
3. WHERE NEW STREET LIGHTS ARE TO BE ADDED TO AN EXISTING CIRCUIT, THE CONTRACTOR SHALL PROVIDE THE COMPLETE STREET LIGHT FOUNDATION & POLE, CONDUIT AND WIRES. TERMINATION WILL BE MADE BY CITY FORCES.
4. ALL NEW STREETLIGHT FOUNDATION CENTERLINES SHALL BE 4'-0" FROM THE TOP BACK OF CURB.
5. EXISTING STREETLIGHT CRASH CAPS ARE TO BE ADJUSTED (REMOVED & REPLACED) AS REQUIRED, TO MATCH NEW BACK OF SIDEWALK GRADES.
6. ALL LEGENDS AND SYMBOLS SHALL BE WHITE.
7. STREET LIGHT SERIES CIRCUIT WILL BE DISCONNECTED FOR THE CONTRACTOR. CONTACT CITY OF LAS VEGAS ELECTRICAL SERVICES AT 229-6331.
8. STREET LIGHT ELECTRICAL DISCONNECTIONS AND RECONNECTIONS SHALL BE DONE BY CITY FORCES AND COORDINATED WITH CLV ELECTRICAL SERVICES.

OAKEY BOULEVARD

CONSTRUCTION NOTES

- 1 STANDARD TYPE 1 CENTERLINE (YELLOW) PER STD DWG 244
- 2 STANDARD TYPE 2 CENTERLINE (YELLOW) PER STD DWG 244
- 3 STANDARD TYPE 5 LANE LINE PER STD DWG 244A
- 4 NOT USED
- 5 CONTINUOUS 12" WHITE LINE COLD FORMED POLYMER
- 6 EXISTING R1-1 WITH STREET NAME SIGNS TO REMAIN
- 7 EXISTING R1-1 TO REMAIN
- 8 NEW STANDARD STREET NAME SIGN SEE CLARK COUNTY AREA UNIFORM STD. DWGS 249, 250 & 251
- 9 NEW R1-1
- 10 CONTINUOUS 24" WHITE STOP BAR, 4' BEHIND CROSSWALK COLD FORMED POLYMER
- 11 10' CROSSWALKS LOCATED PER CLARK COUNTY AREA UNIFORM STD. DWGS 254
- 12 EXISTING CAT TRANSIT SYSTEM SIGN TO REMAIN
- 13 EXISTING R8-3A TO REMAIN
- 14 NEW 2-WAY BLUE REFLECTIVE MARKER, CENTERED IN DRIVING LANE
- 15 REPLACE R2-1(25) WITH NEW R2-1(35)
- 16 NEW R8-3A WITH R7-IAP PLACARD-BANDED TO STREETLIGHT POLE
- 17 NEW R7-IAP PLACARD-BANDED TO STREET LIGHT POLE BELOW EXISTING R8-3A
- 18 INSTALL NEW R1-3 SUPPLEMENTARY PLATE
- 19 133 FT OF LANE MARKING SEE CLARK COUNTY AREA STD DWG 246
- 20 TACK ON ISLAND CURB PER CLV MODIFIED STD DWG 220-A LENGTH = 200' WIDTH = 1' FILL GAP WITH 6" CONCRETE
- 21 NEW R6-1R WITH POST AND FOUNDATION
- 22 CONTINUOUS 24" WHITE COLD FORMED POLYMER AT LANE LINES AND LANE CENTERS
- 23 REMOVE EXISTING SIGN, POST, AND FOUNDATION
- 24 NEW S2-1 WITH POST AND FOUNDATION
- 25 REPLACE R1-1 WITH NEW S2-1
- 26 NEW C.A.T. SIGN
- 27 INSTALL NEW PHOTOELECTRIC CONTROL PER STD. DWG. 327

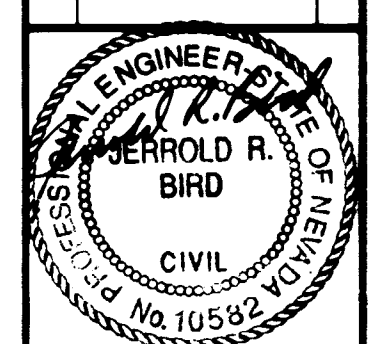


OAKEY BOULEVARD

CLV DWG NO. 107-V2247

Call before you Dig.
1-800-227-2000

NO.	REVISIONS	DESCRIPTION/DATE	BY
1	REVISED	9-2-95	



100 GRIER DRIVE
LAS VEGAS, NEVADA 89119
PHONE (702) 361-9050
FAX (702) 361-0659
INCORPORATED
CONSULTING ENGINEERS

NEVADA

STRIPING AND STREET LIGHTING PLAN
FROM STA. 103+00 TO STA. 123+00
OAKEY BOULEVARD
RAINBOW BLVD. TO DECATUR BLVD.

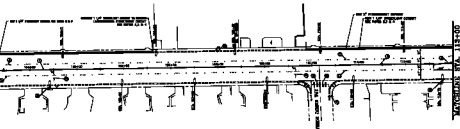
CITY OF LAS VEGAS
CLARK COUNTY

JOB NO.:	2-241-073
ACAD FILE:	OAKELS03
DESIGNED:	J.B.
DRAWN:	T.H.
CHECKED:	D.P.
DATE:	JUNE 1995

T3
27 OF 62 SHEETS



MATCHLINE STA. 108+00



MATCHLINE STA. 113+00

STREET LIGHTING NOTES

1. ALL LIGHTING SHALL BE IN ACCORDANCE WITH THE CITY OF CHICAGO STREET LIGHTING SPECIFICATIONS.
2. ALL LIGHTING SHALL BE IN ACCORDANCE WITH THE CITY OF CHICAGO STREET LIGHTING SPECIFICATIONS.
3. ALL LIGHTING SHALL BE IN ACCORDANCE WITH THE CITY OF CHICAGO STREET LIGHTING SPECIFICATIONS.
4. ALL LIGHTING SHALL BE IN ACCORDANCE WITH THE CITY OF CHICAGO STREET LIGHTING SPECIFICATIONS.
5. ALL LIGHTING SHALL BE IN ACCORDANCE WITH THE CITY OF CHICAGO STREET LIGHTING SPECIFICATIONS.
6. ALL LIGHTING SHALL BE IN ACCORDANCE WITH THE CITY OF CHICAGO STREET LIGHTING SPECIFICATIONS.
7. ALL LIGHTING SHALL BE IN ACCORDANCE WITH THE CITY OF CHICAGO STREET LIGHTING SPECIFICATIONS.
8. ALL LIGHTING SHALL BE IN ACCORDANCE WITH THE CITY OF CHICAGO STREET LIGHTING SPECIFICATIONS.
9. ALL LIGHTING SHALL BE IN ACCORDANCE WITH THE CITY OF CHICAGO STREET LIGHTING SPECIFICATIONS.
10. ALL LIGHTING SHALL BE IN ACCORDANCE WITH THE CITY OF CHICAGO STREET LIGHTING SPECIFICATIONS.

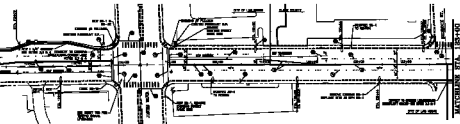
OAKLEY BOULEVARD

CONSTRUCTION NOTES

1. ALL CONSTRUCTION SHALL BE IN ACCORDANCE WITH THE CITY OF CHICAGO STREET LIGHTING SPECIFICATIONS.
2. ALL CONSTRUCTION SHALL BE IN ACCORDANCE WITH THE CITY OF CHICAGO STREET LIGHTING SPECIFICATIONS.
3. ALL CONSTRUCTION SHALL BE IN ACCORDANCE WITH THE CITY OF CHICAGO STREET LIGHTING SPECIFICATIONS.
4. ALL CONSTRUCTION SHALL BE IN ACCORDANCE WITH THE CITY OF CHICAGO STREET LIGHTING SPECIFICATIONS.
5. ALL CONSTRUCTION SHALL BE IN ACCORDANCE WITH THE CITY OF CHICAGO STREET LIGHTING SPECIFICATIONS.
6. ALL CONSTRUCTION SHALL BE IN ACCORDANCE WITH THE CITY OF CHICAGO STREET LIGHTING SPECIFICATIONS.
7. ALL CONSTRUCTION SHALL BE IN ACCORDANCE WITH THE CITY OF CHICAGO STREET LIGHTING SPECIFICATIONS.
8. ALL CONSTRUCTION SHALL BE IN ACCORDANCE WITH THE CITY OF CHICAGO STREET LIGHTING SPECIFICATIONS.
9. ALL CONSTRUCTION SHALL BE IN ACCORDANCE WITH THE CITY OF CHICAGO STREET LIGHTING SPECIFICATIONS.
10. ALL CONSTRUCTION SHALL BE IN ACCORDANCE WITH THE CITY OF CHICAGO STREET LIGHTING SPECIFICATIONS.



MATCHLINE STA. 113+00



MATCHLINE STA. 123+00

OAKLEY BOULEVARD



CLY DWG NO. 107-72247

AS BUILT



THE STATE OF ILLINOIS
OFFICE OF THE ENGINEER
FOR THE STATE OF ILLINOIS

STREETING AND STREET LIGHTING PLAN
FROM PLAT NO. 107-72247
SUBJECT: OAKLEY BOULEVARD, CHICAGO, ILLINOIS

DATE: 11-2-76
SCALE: AS SHOWN
SHEET NO. 1 OF 1

T3

11-2-76