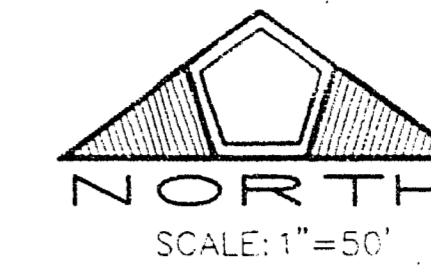


13-12-57
01662

96022a

PIONEER ESTATES WEST - PHASE 6

A PORTION OF THE SOUTHWEST QUARTER (SW 1/4) OF THE NORTHWEST QUARTER (NW 1/4) OF SECTION 10, TOWNSHIP 20 SOUTH, RANGE 60 EAST, M.D.M., CITY OF LAS VEGAS, CLARK COUNTY, NEVADA.



NW 1/16 SECTION 10

FOUND ALUMINUM CAP
P.L.S. 2050 PER
F. 55, P. 3 OF SURVEYS

FOUND TYPE III MONUMENT
P.L.S. 4541 - PER BOOK 61
PAGE 86 OF PLATS

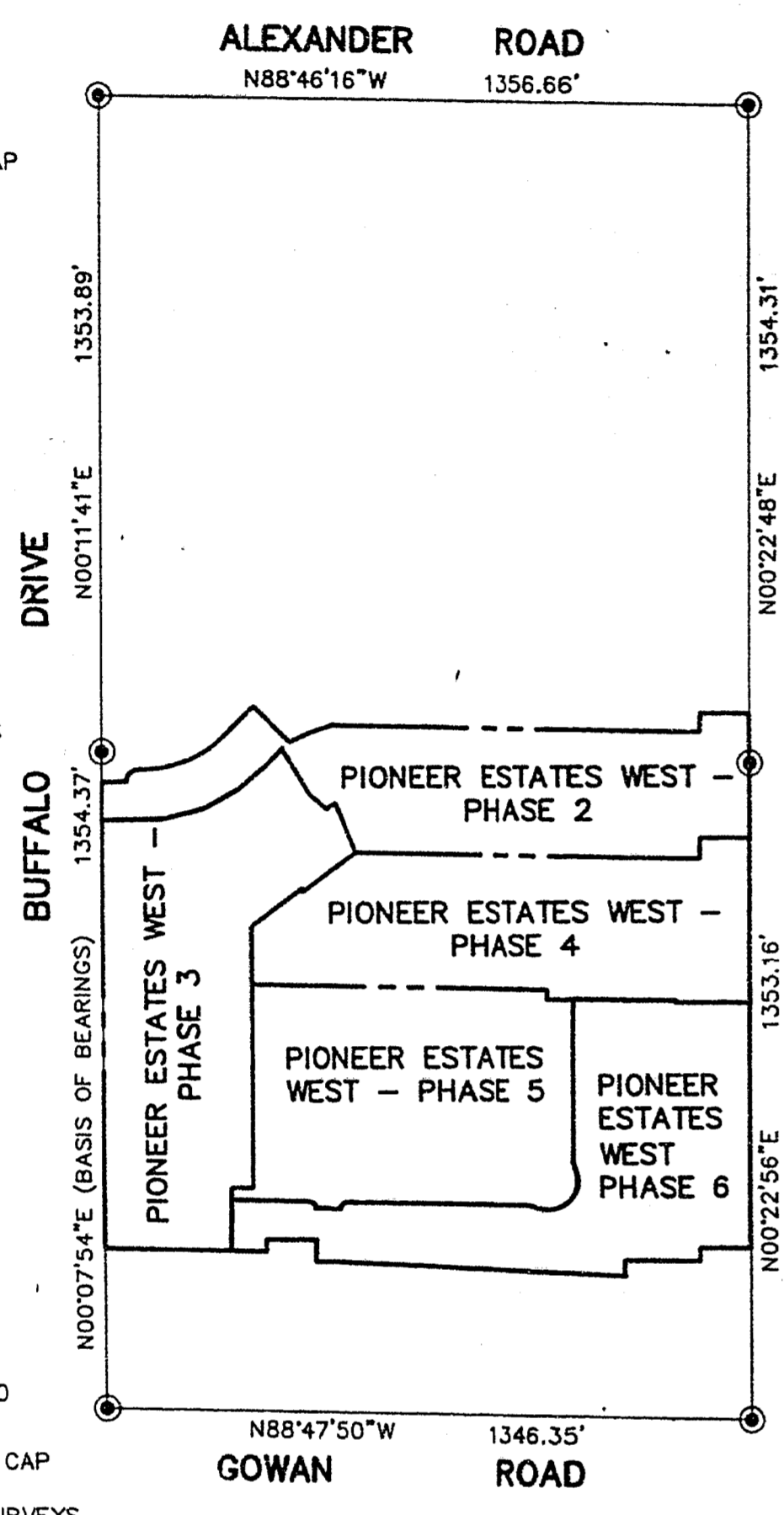
FOUND TYPE III MONUMENT
P.L.S. 4541 - PER BOOK 61
PAGE 86 OF PLATS

4 3
9 10
FOUND ALUMINUM CAP
P.L.S. 6305 - PER
F. 59, P. 3 OF
PARCEL MAPS

N 1/16 9 10
FOUND ALUMINUM CAP
R.L.S. 2050 PER
F. 55, P. 3 OF SURVEYS

1/4 COR. 9 10
FOUND ALUMINUM CAP
R.L.S. 2050 PER
F. 55, P. 3 OF SURVEYS

1/4 COR. 9 10
FOUND ALUMINUM CAP
R.L.S. 2050 PER
F. 55, P. 3 OF SURVEYS



LEGEND

- SET TYPE III MONUMENT P.L.S. 4541 AND TYPE IV MONUMENTS IN TOP OF CURB (UNLESS OTHERWISE NOTED)
- ⊙ FOUND MONUMENT AS SHOWN AND DESCRIBED
- 6 LOT NUMBER
TOTAL LOTS IN SUBDIVISION = 32
TOTAL ACREAGE = 6.46 ACRES
- ② BLOCK NUMBER
- ① CURVE NUMBER
- SUBDIVISION BOUNDARY LINE
- - - STREET CENTERLINE
- - - SECTION LINE

SURVEY ANALYSIS

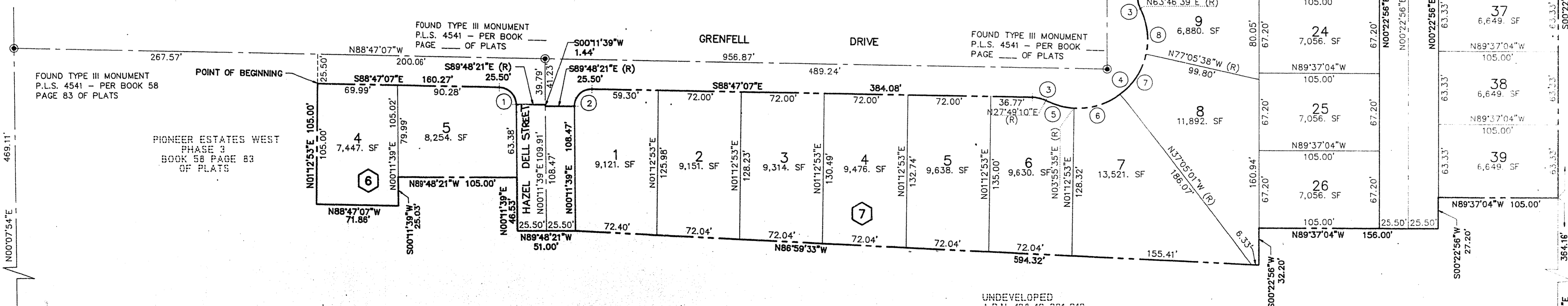
W 1/2 NW 1/4 SECTION 10,
T. 20 S., R. 60 E., M.D.M.

NW 1/16 SECTION 10

FOUND ALUMINUM CAP
R.L.S. 2050 PER
F. 55, P. 3 OF SURVEYS

W 1/16 C-C SECTION 10
FOUND TYPE III MONUMENT
P.L.S. 4541 - PER BOOK 34,
PAGE 68 OF PLATS

CURVE	DELTA	RADIUS	LENGTH	TANGENT
1	88°58'46"	15.00'	23.29'	14.74'
2	91°01'14"	15.00'	23.63'	15.27'
3	26°36'17"	25.00'	11.61'	6.91'
4	144°02'31"	60.00'	150.84'	184.89'
5	23°53'35"	60.00'	25.02'	12.69'
6	41°00'35"	60.00'	42.95'	22.44'
7	40°00'37"	60.00'	41.90'	21.84'
8	39°07'43"	60.00'	40.98'	21.32'



- NOTES:**
- ALL REAR PROPERTY CORNERS ARE REBAR AND ALUMINUM CAP P.L.S. 4541 UNLESS WALL IS BUILT THEN NAIL AND BRASS TAG P.L.S. 4541 SET IN WALL DENOTES SIDE PROPERTY LINE. SET SAWCUT IN THE TOP OF CURB ON THE SIDE PROPERTY LINES EXTENDED.
 - COMMUNITY SEWERS ARE TO BE PROVIDED BY THE CITY OF LAS VEGAS.
 - ALL STREETS SHOWN HEREON ARE PUBLIC STREETS, HEREBY DEDICATED TO THE CITY OF LAS VEGAS.

UNDEVELOPED
A.P.N. 138-10-201-010

W 1/16 C-C SECTION 10
FOUND TYPE III MONUMENT
P.L.S. 4541 - PER BOOK 34,
PAGE 68 OF PLATS

BOOK 71 Page 82 4209-VI