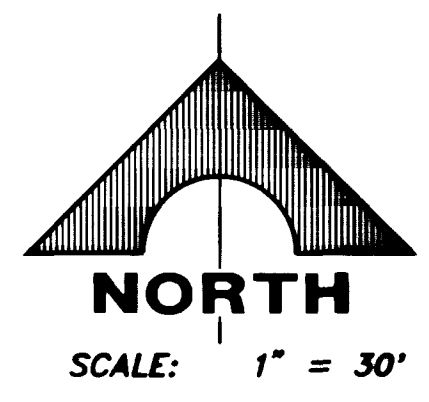
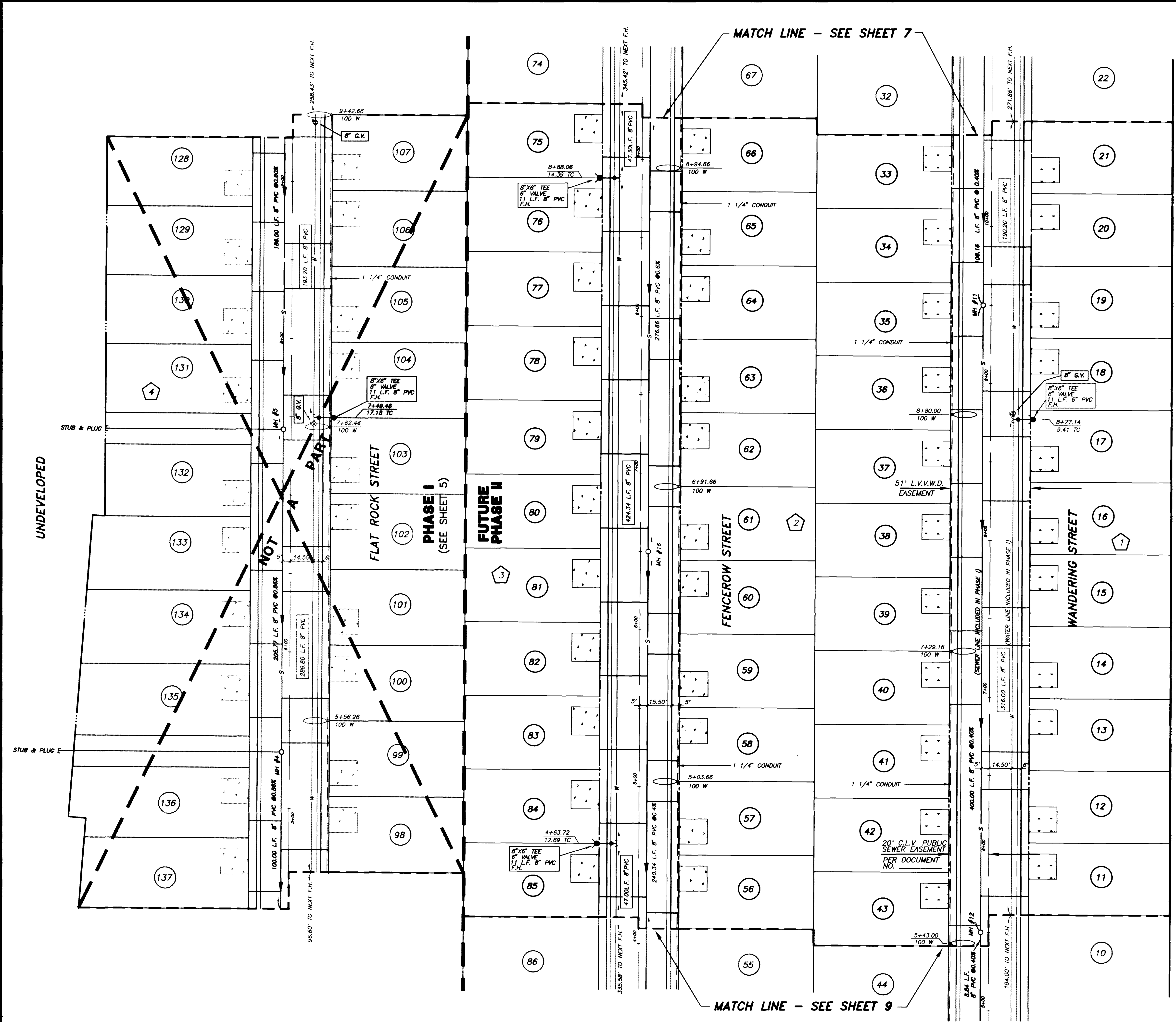


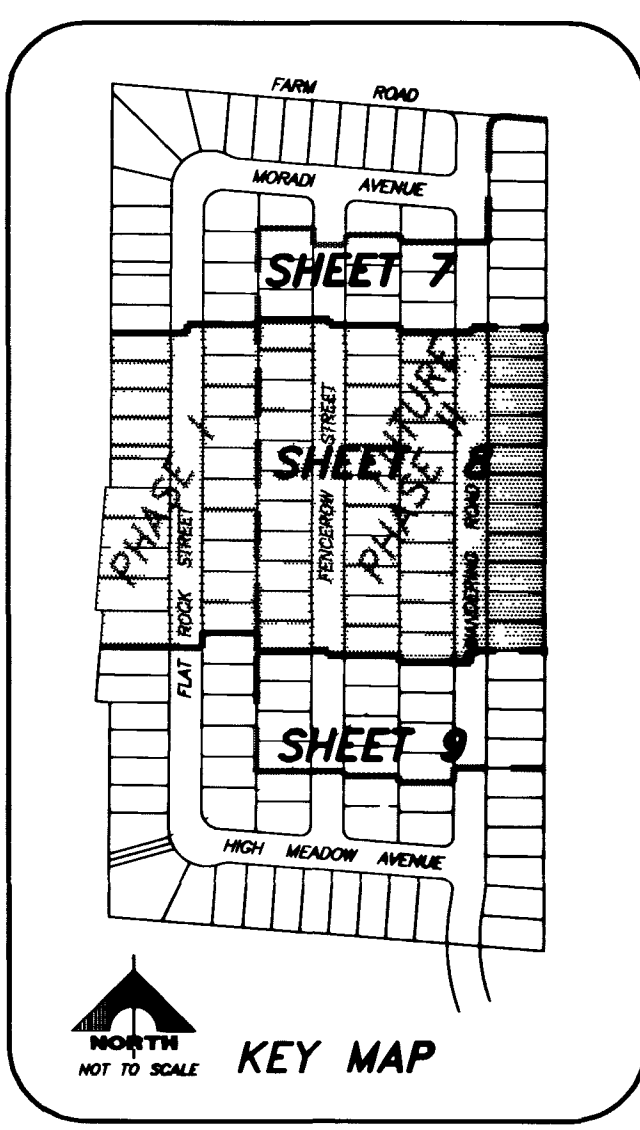
JOB NO. 727.018

PLOTTED: 05/23/95 2:11 PM DRAWING: C:\DRAWINGS\01\01-8

BY: B



PROPOSED ELKHORN SPRINGS DEVELOPMENT



APPROVED FOR CONSTRUCTION

LAS VEGAS VALLEY WATER DISTRICT DATE

REV	DATE	DESCRIPTION	C.L.V.	DATE

RECOMMENDED BY	DATE
SONNY W. WALLACE	10/18/95
DESIGNED BY	DATE
SONNY W. WALLACE	10/18/95

ENGINEER - STATE OF NEVADA
 SONNY W. WALLACE
 LICENSE NO. 10118
 EXPIRES 10/18/95

STANPARK HOMES OF NEVADA
 ORCHARD VALLEY - FUTURE PHASE II
 UTILITY PLAN II - PHASE II (FUTURE)

G.C. WALLACE, INC.
 Engineering/Architecture
 1555 SOUTH RAINBOW BLVD., LAS VEGAS, NEVADA 89102

SHEET 8

OF 24 SHEETS

9153

11-20-50

307Y-4391-1

