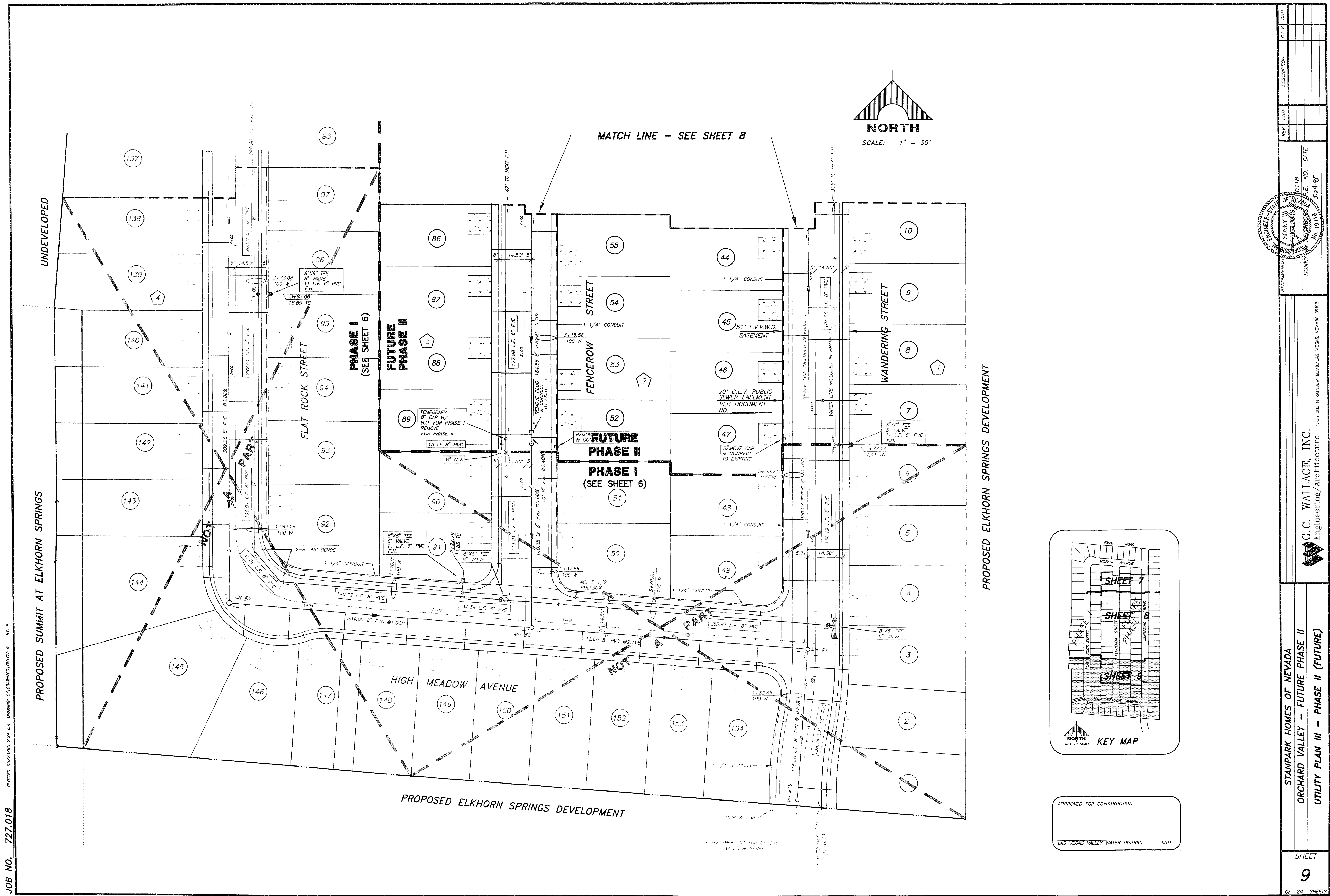
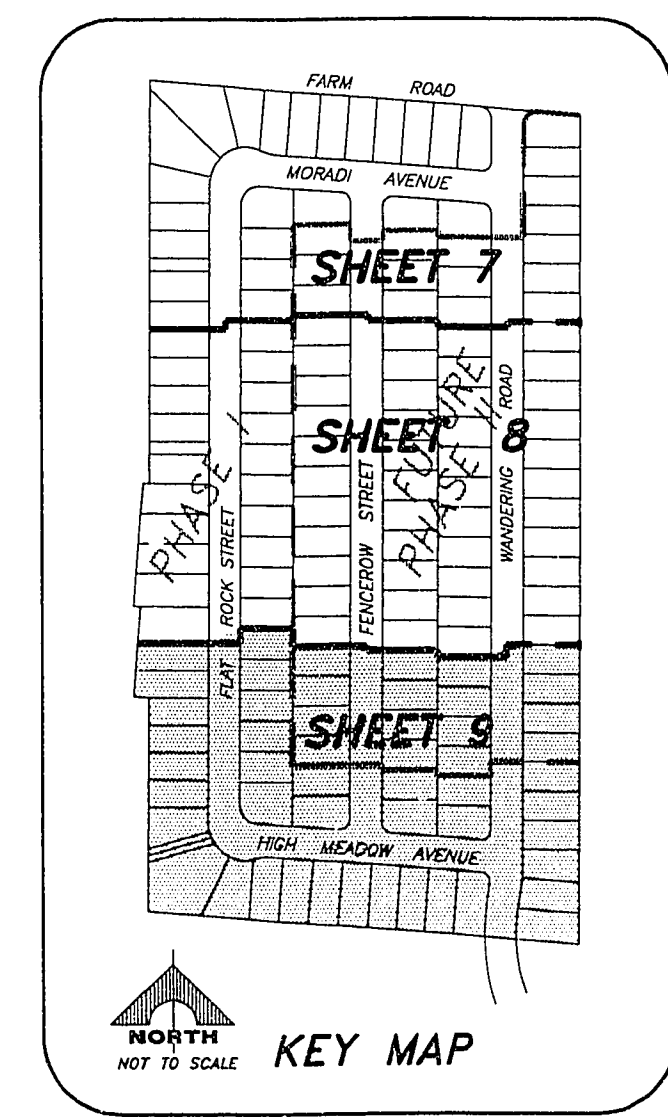


JOB NO. 727.018

PRINTED: 06/23/95 2:24 pm DRAWING: C:\DRAWINGS\01\01-9 BR: II



PROPOSED ELKHORN SPRINGS DEVELOPMENT



APPROVED FOR CONSTRUCTION

LAS VEGAS VALLEY WATER DISTRICT DATE

REV	DATE	DESCRIPTION	CLL	DATE

RECOMMENDED BY: SONNY W. WALLACE, INC. E. NO. DATE

ENGINEER: SONNY W. WALLACE, INC. E. NO. DATE

1555 SOUTH RAINBOW BLVD., LAS VEGAS, NEVADA 89102

STANPARK HOMES OF NEVADA

ORCHARD VALLEY - FUTURE PHASE II

UTILITY PLAN III - PHASE II (FUTURE)

SHEET 9

OF 24 SHEETS

11-20-52

307Y-4391-1