

**WATER DISTRICT STANDARD NOTES**

- NO WORK SHALL BEGON UNTIL THE WATER PLANS HAVE BEEN RELEASED FOR CONSTRUCTION BY THE LVWD. FOLLOWING WATER PLAN APPROVAL, 48 HOUR NOTICE SHALL BE GIVEN TO THE LVWD COMMUNICATION SUPPORT CENTER (258-7171) PRIOR TO THE START OF CONSTRUCTION. NOTICE MUST BE GIVEN BY 2:00 P.M. THE BUSINESS DAY PRIOR TO A LVWD INSPECTION.
- ALL WORK SHALL CONFORM TO LVWD STANDARD PLATES, DRAWINGS, AND SPECIFICATIONS, LATEST EDITION.
- ALL WORK, EXCEPT AS MODIFIED BY THESE PLANS OR BY NOTE 2, SHALL BE DONE IN ACCORDANCE WITH THE MOST CURRENT DRAFT OR EDITION OF THE UNIFORM STANDARD SPECIFICATIONS FOR PUBLIC WORKS CONSTRUCTION OF SITE IMPROVEMENT, CLARK COUNTY AREA.
- A SINGLE PIPE MATERIAL SHALL BE USED THROUGHOUT THE PROJECT UNLESS OTHERWISE APPROVED BY THE LVWD.
- ALL SERVICE LATERALS TWO (2) INCHES IN DIAMETER AND SMALLER SHALL BE COPPER TUBING WITH LVWD APPROVED SERVICE SADDLES.
- ALL WATER METER BOXES SHALL BE LOCATED OUTSIDE OF DRIVEWAY AREAS.
- ALL VALVES SHALL BE LOCATED OUTSIDE OF DRIVEWAYS, VALLEY AND CURB CUTTERS.
- THE FOLLOWING REQUIREMENTS MUST BE MET IN THE EVENT A WATER LINE AND SANITARY OR STORM SEWER LINE CROSS:
  - A. MINIMUM EIGHTEEN (18) INCH VERTICAL SEPARATION (OUTSIDE TO OUTSIDE) MUST BE MAINTAINED WHEN THE WATER LINE IS INSTALLED OVER THE SANITARY OR STORM SEWER LINE. IF THE VERTICAL SEPARATION CANNOT BE MAINTAINED OR THE WATER LINE MUST BE PLACED UNDER THE SANITARY OR STORM SEWER LINE, THE SANITARY OR STORM SEWER LINE MUST BE CONSTRUCTED WITH ONE OF THE FOLLOWING OR, AS SHOWN ON THESE PLANS:
    - A. POTABLE WATER SUPPLY QUALITY MATERIAL.
    - B. ENCASMENT, WITH FOUR (4) HIGH CONCRETE EXTENDED 10" EA SIDE, MINIMUM 4" THICKNESS.
    - C. SLEEVING WITH POTABLE WATER SUPPLY QUALITY PIPE.
- EACH PROVISION MUST EXTEND ALONG THE SANITARY OR STORM SEWER, ON EITHER SIDE OF THE MAIN, A MINIMUM TO FOOT DISTANCE PERPENDICULAR TO THE WATER MAIN EXTERIOR.
- WARNING TAPE SHALL BE REQUIRED OVER ALL MAINS, ALL SIX (6) INCH DIAMETER AND LARGER SERVICE LATERALS, AND ANY SERVICE LATERAL NOT INSTALLED PERPENDICULAR TO THE MAIN IN ACCORDANCE WITH STANDARD PLATE NO. 27.
- ALL WATER FACILITIES SHALL BE FILLED, DISINFECTED, PRESSURE TESTED, FLUSHED, FILLED AND AN ACCEPTABLE WATER SAMPLE OBTAINED, PRIOR TO CONNECTION TO THE LVWD'S DISTRIBUTION SYSTEM.
- THE CONTRACTOR MUST OBTAIN ALL METERS TWO (2) INCHES AND SMALLER FROM LVWD CENTRAL STORES. TELEPHONE 258-3152 FORTY-EIGHT (48) HOURS PRIOR TO PICKUP.
- CONSTRUCTION MAY INTERRUPT SERVICE, WITH LVWD APPROVAL AND PROPER NOTIFICATION, BETWEEN THE HOURS OF 10 PM AND 6 AM, SUNDAY THROUGH THURSDAY. CIRCUMSTANCES MAY REQUIRE TEMPORARY SERVICE FEES BE INSTALLED, WITHOUT LVWD REIMBURSEMENT. ANY TEMPORARY SERVICE FEES MUST HAVE PRIOR LVWD APPROVAL.
- ALL WATER FACILITY CONSTRUCTION MATERIALS USED MUST BE AS LISTED ON THE LVWD'S PRE-APPROVED MATERIALS AND MANUFACTURERS LISTING FOR NEW FACILITIES, LATEST REVISION, OR SPECIFICALLY APPROVED ON THESE PLANS.

**APPROXIMATE QUANTITIES**

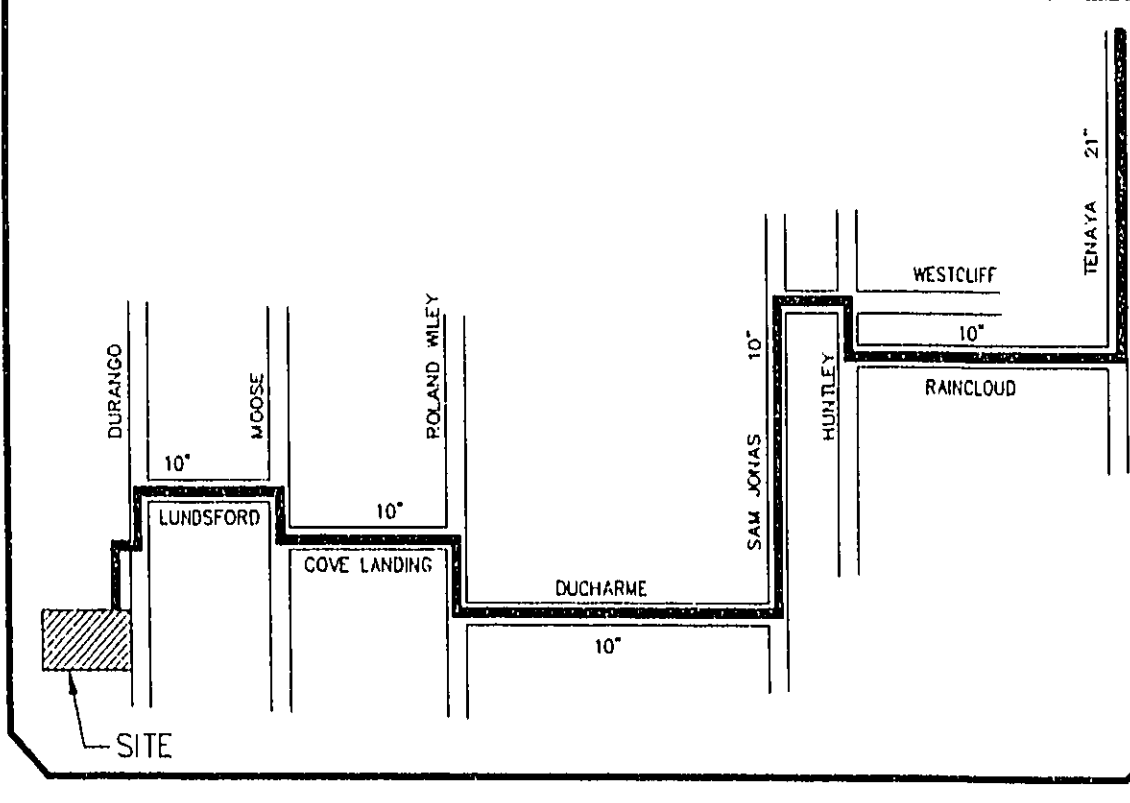
| WATER                            | UNIT 3   |
|----------------------------------|----------|
| STD. F.H. W/6" G.V. & 6" LATERAL | 6 EA.    |
| 6" MAIN                          | 1446 LF. |
| 8" MAIN                          | 2147 LF. |
| 6" GATE VALVE                    | 1 EA.    |
| 8" GATE VALVE                    | 3 EA.    |
| 3/4" WATER SERVICES              | 63 EA.   |
| 3/4" WATER METER (FROM LVWD)     | 63 EA.   |
| METER BOX                        | 63 EA.   |
| 2" BLOW-OFF W/CAP                | 2 EA.    |
| 8" MECH. JT. TAPPING SLEEVE      | 1 EA.    |
| 8" TAPPING VALVE                 | 1 EA.    |

NOTES:  
1. WATER LATERALS, SEWER LATERALS, AND DRIVEWAY LOCATIONS AND WIDTHS ARE SHOWN SCHEMATICALLY ONLY. IT IS THE CONTRACTOR'S RESPONSIBILITY TO INSTALL WATER AND SEWER LATERALS SO THEY'RE NOT IN CONFLICT WITH DRIVEWAYS.

**APPROXIMATE QUANTITIES**

| STREET LIGHTS AND TRAFFIC            | UNIT 3   |
|--------------------------------------|----------|
| 100 WATT HPS LUMINAIRE W/11 GA. POLE | 16 EA.   |
| 200 WATT HPS LUMINAIRE W/11 GA. POLE | 4 EA.    |
| 1-1/4" PVC CONDUIT                   | 3602 LF. |
| NO. 3-1/2 PULLBOX                    | 4 EA.    |
| 6" D-3 STREET NAME SIGN              | 7 EA.    |
| 30" STOP SIGN                        | 1 EA.    |
| OM3R (OBJECT MARKER)                 | N/A      |
| BARRICADE (TYPE III)                 | N/A      |

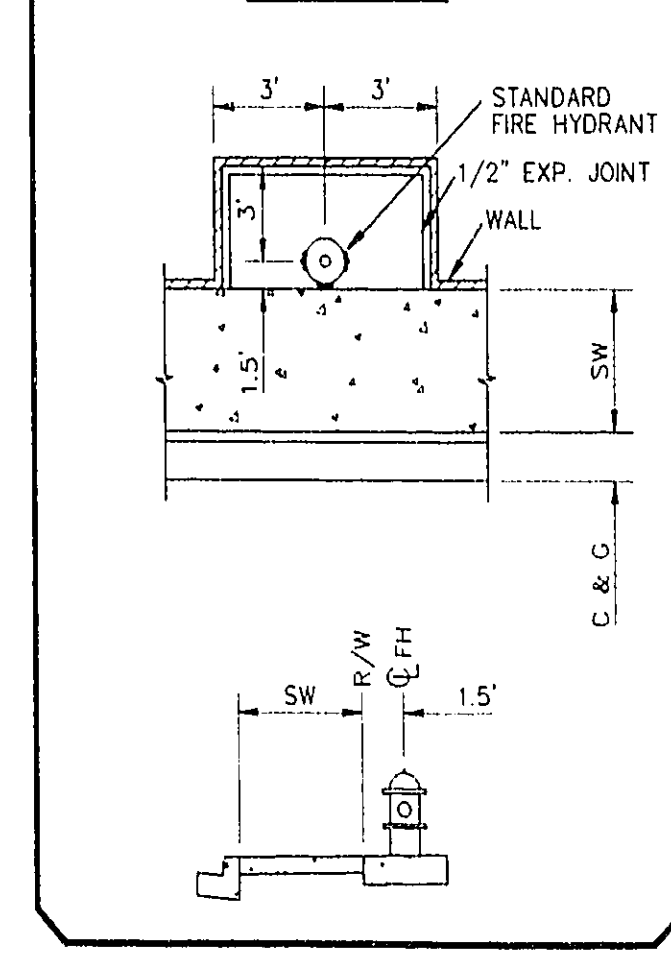
**EXISTING SANITARY SEWER SERVICE ROUTE**



**FIRE DEPARTMENT NOTES**

- ALL WORK SHALL BE DONE IN STRICT ACCORDANCE WITH THE CLARK COUNTY ORDINANCE #1167, NFPA #24, 1987 EDITION AND THE UNIFORM FIRE CODE, 1988 EDITION.
- ON ANY BUILDING CONSTRUCTION SITE, ACCESSIBLE FIRE HYDRANTS SHALL BE INSTALLED BEFORE CONSTRUCTION MATERIALS ARE DELIVERED TO THE SITE AND CONSTRUCTION COMMENCES. SAID FIRE HYDRANTS SHALL BE IN GOOD WORKING ORDER WITH REQUIRED WATER SUPPLY.
- IF DURING CONSTRUCTION IT BECOMES NECESSARY TO CLOSE ANY CONTROL VALVE OR PLACE A HYDRANT OUT OF SERVICE, THE CLARK COUNTY FIRE DEPARTMENT MUST BE CONTACTED.
- PAINTING OF CURBS AND/OR STRIPING OF ASPHALT AREAS AND PROTECTION OF HYDRANTS FROM PHYSICAL INJURY SHALL BE IN ACCORDANCE WITH THE CLARK COUNTY FIRE DEPARTMENT FIRE HYDRANT INSTALLATION SPECIFICATIONS HANDBOOK.
- NO FIRE HYDRANT SHALL BE LOCATED WITHIN 25 FEET OF ANY STRUCTURE, OR 6 FEET OF A DRIVEWAY, POWER POLE, LIGHT STANDARD, OR ANY OTHER OBSTRUCTION. FOR WALL, FENCE AND PLANTER LOCATIONS, A PERIMETER AROUND THE FIRE HYDRANT MEASURING A MINIMUM OF 3 FEET FROM ITS CENTER SHALL BE MAINTAINED CLEAR OF ALL OBSTRUCTIONS AT ALL TIMES.
- AT ALL TIMES DURING CONSTRUCTION SUITABLE EMERGENCY VEHICLE ACCESS ROADS BE MAINTAINED. ROADWAYS MUST BE SMOOTH, COMPACTED AND CAPABLE OF SUPPORTING THE IMPROVED LOADS OF ALL EMERGENCY VEHICLES.
- PRIOR TO ACCEPTANCE OF ANY PRIVATE FIRE SERVICE MAIN, A SATISFACTORY HYDROSTATIC TEST WITH PIPING JOINTS UNCOVERED MUST BE CONDUCTED. APPROVED PLANS AND A CONTRACTOR'S MATERIALS AND TEST CERTIFICATE MUST BE PROVIDED AT TIME OF INSPECTION.
- BLUE REFLECTIVE MARKERS INSTALLED PER SECTION 13.04.130 (d) OF CLARK COUNTY ORDINANCE # 1167, MUST BE PROVIDED BEFORE FINAL HYDRANT ACCEPTANCE CAN BE ATTAINED.

**FIRE HYDRANT LOCATION TYPICAL**



**FITTINGS LEGEND**

|                            |                                   |
|----------------------------|-----------------------------------|
| 6" MAIN                    | 6" GATE VALVE                     |
| 8" MAIN                    | 12"x8" REDUCER                    |
| 8" GATE VALVE              | 6" - 45° BEND                     |
| 8" - 90° BEND              | 2" - BLOW-OFF ASSEMBLY W/CAP      |
| STD. FIRE HYDRANT ASSEMBLY | 8"x6"x6" MECH. JT. TAPPING SLEEVE |
| 6"x6"x6" TEE               | 8"x6"x6" TEE                      |
| 8"x6" REDUCER              | PLUG AND CAP                      |
| 8" TAPPING VALVE           |                                   |

**LEGEND**

|                                 |                     |
|---------------------------------|---------------------|
| — W —                           | WATER LINE (NEW)    |
| — E —                           | WATER LINE (EXIST.) |
| — F —                           | WATER LINE (FUTURE) |
| — S —                           | SEWER LINE (NEW)    |
| — E —                           | SEWER LINE (EXIST.) |
| — F —                           | SEWER LINE (FUTURE) |
| — G —                           | GATE VALVE          |
| — MH# —                         | SEWER MANHOLE       |
| — 1-1/4" PVC CONDUIT            |                     |
| — #3 1/2 PULL BOX               |                     |
| — F —                           | FIRE HYDRANT        |
| — W/6" GATE VALVE               |                     |
| — S —                           | SEWER LATERAL (4")  |
| — 100W H.P.S. STREET LIGHT      |                     |
| — 200W H.P.S. STREET LIGHT      |                     |
| — 30" STOP SIGN (STD. DWG. 246) |                     |

**LAS VEGAS FIRE DEPARTMENT**

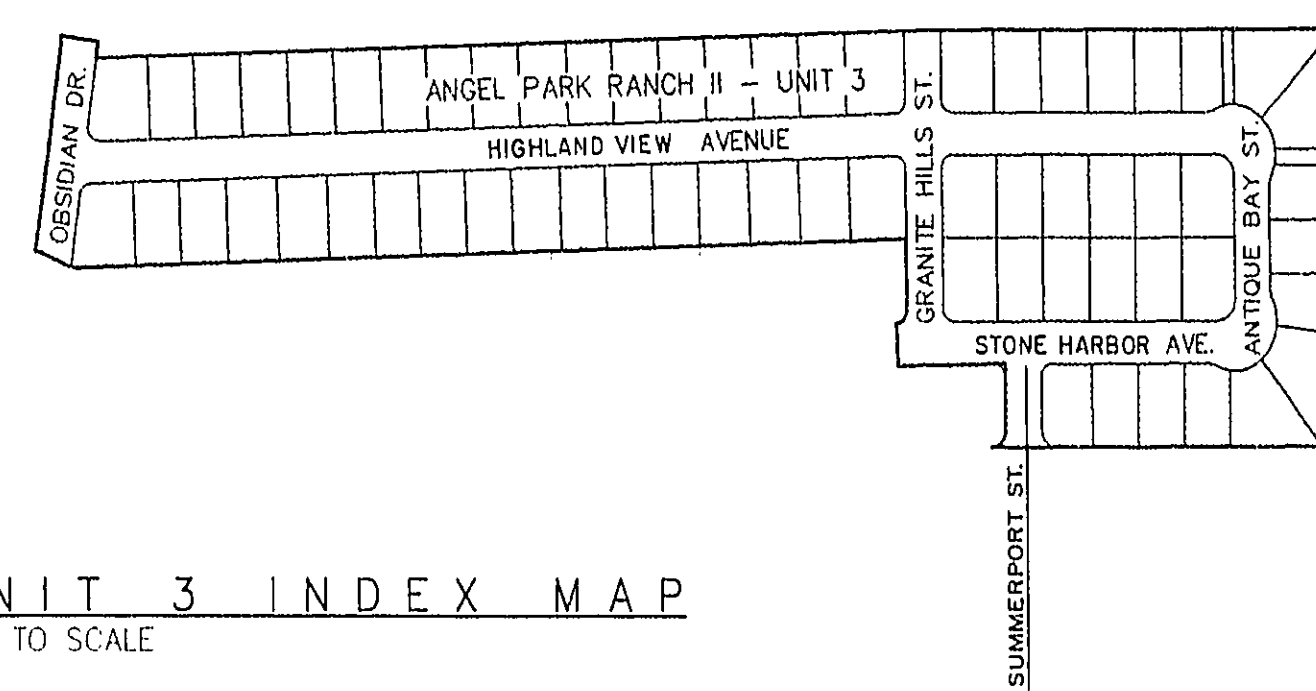
FIRE FLOW REQUIREMENT IS 1,500 GALLONS PER MINUTE WITH 20 POUNDS PER SQUARE INCH RESIDUAL PRESSURE

| BASED ON                                   |               |
|--|---------------|
| SQUARE FOOTAGE                             | 2340          |
| LARGEST AREA BETWEEN AREA SEPARATION WALLS | N/A           |
| HEIGHT                                     | ONE STORY     |
| TYPE OF CONSTRUCTION                       | TYPE 5        |
| EXPOSURES                                  | 10'           |
| SPRINKLER SYSTEM                           | NONE          |
| OCCUPANCY                                  | SINGLE-FAMILY |
| ROOF CONSTRUCTION                          | TILE          |

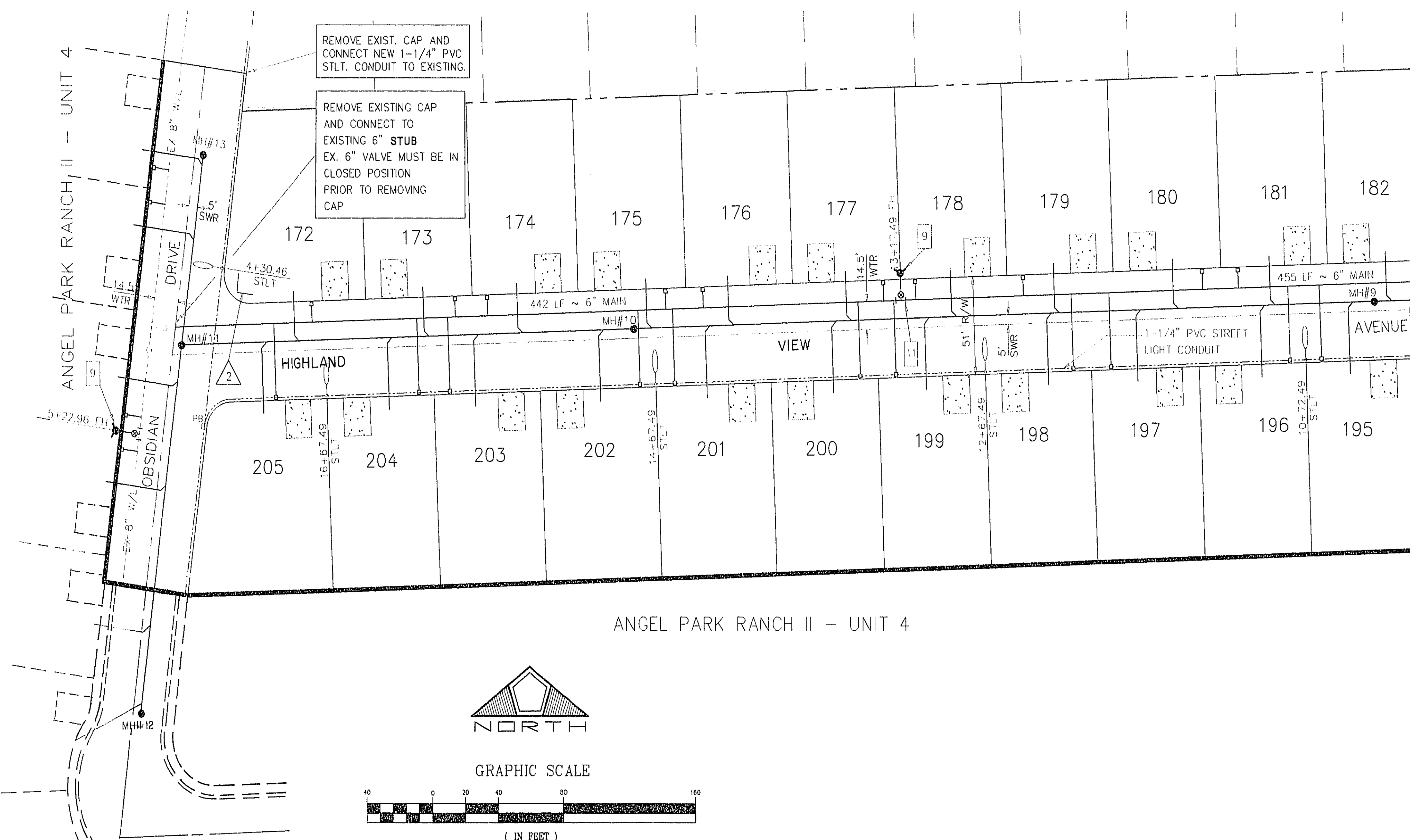
**APPROVALS**

1-27-95  
 LAS VEGAS FIRE DEPARTMENT DATE  
 1-30-95  
 NEVADA POWER COMPANY DATE

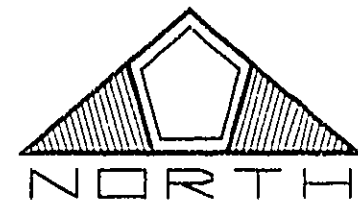
**Call before you Dig.**  
 1-800-227-2600  
 UNDERGROUND SERVICE ALERT (USA)



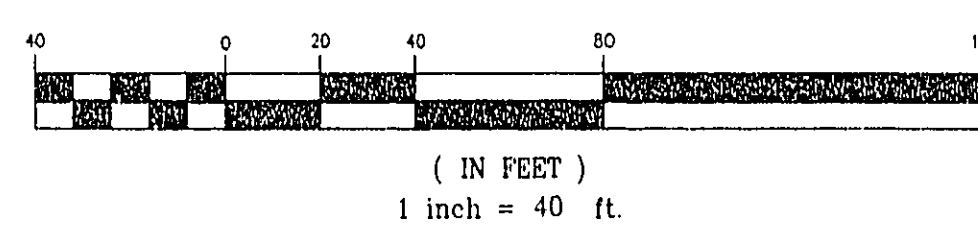
UNIT 3 INDEX MAP  
NOT TO SCALE



ANGEL PARK RANCH II - UNIT 4



GRAPHIC SCALE



MATCH LINE - SEE SHEET 4

| NO. | DESCRIPTION | DATE | APP'D. |
|-----|-------------|------|--------|
|     |             |      |        |

DATE: 1/25/95  
 DESIGNED BY: CCS  
 CHECKED BY: CCS  
 JOB NO.: 1-0-003  
 SCALE:

DATE: 1/25/95  
 DRAWN BY: CCS  
 CHECKED BY: CCS  
 JOB NO.: 1-0-003  
 SCALE:

**PENTACORE**  
 Engineering, Inc.  
 6763 West Charleston Boulevard  
 Las Vegas, Nevada 89102  
 (702) 598-0015

PULTE HOMES  
 ANGEL PARK RANCH II - UNIT 3  
 UTILITY PLAN

SHEET  
**3**  
 OF 14

11-5-17

3074-4289-3

24

20