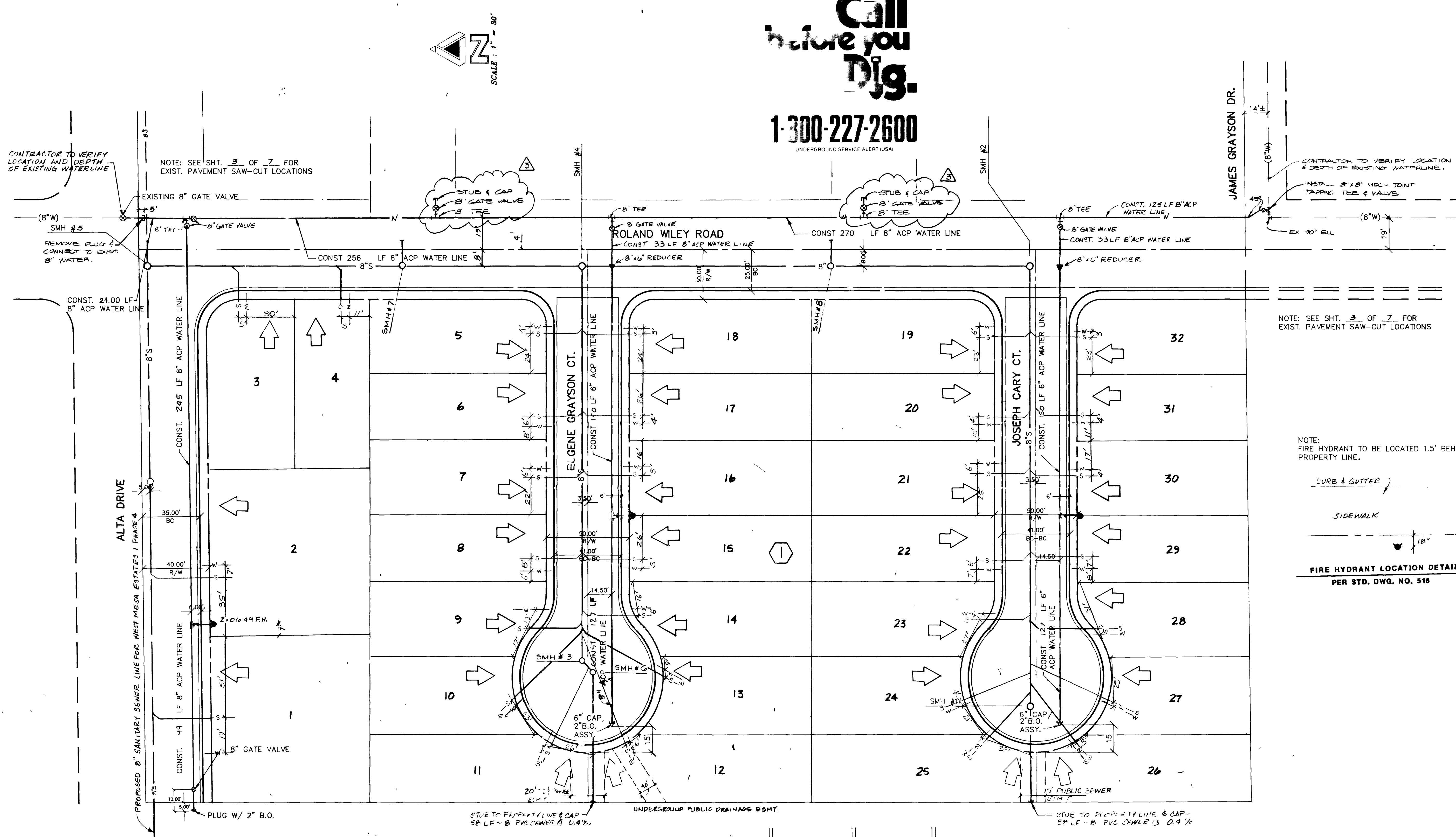


Avoid cutting underground utility lines. It's costly.

Call before you Dig.

1-300-227-2600

UNDERGROUND SERVICE ALERT (USA)



CONTRACTOR TO VERIFY LOCATION AND DEPTH OF EXISTING WATERLINE

NOTE: SEE SHT. 3 OF 7 FOR EXIST. PAVEMENT SAW-CUT LOCATIONS

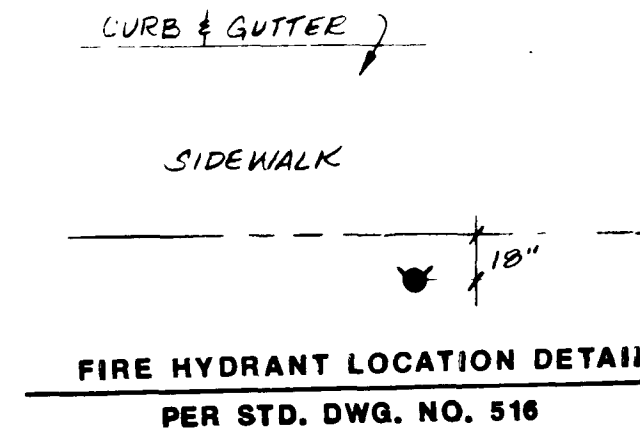
CONTRACTOR TO VERIFY LOCATION & DEPTH OF EXISTING WATERLINE.

INSTALL 8" X 8" MECH. JOINT TRAPPING, TEE & VALVE

EX 90° ELL

NOTE: SEE SHT. 3 OF 7 FOR EXIST. PAVEMENT SAW-CUT LOCATIONS

NOTE: FIRE HYDRANT TO BE LOCATED 1.5' BEHIND PROPERTY LINE.



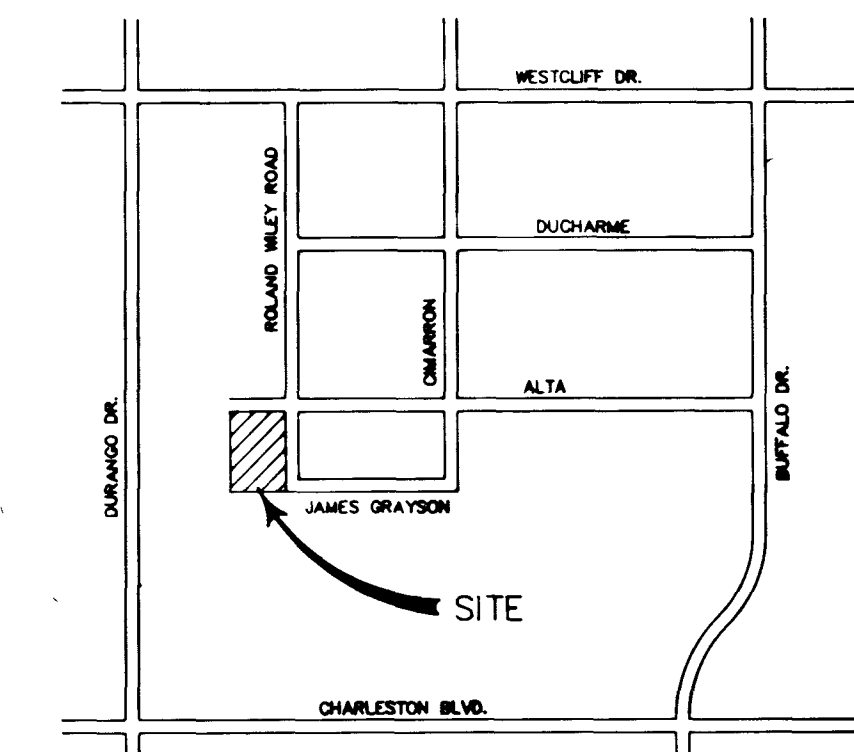
QUANTITIES ESTIMATES

WATER	
6" WATER LINE	= 554 LF.
8" WATER LINE	= 1098 LF.
FIRE HYDRANT & APP.	= 3 EA.
3/4" SERVICE & METER, LOTS 31-32	= 2 EA.
3/4" SERVICE & 5/8" METER, LOTS 1-30	= 30 EA.
MECH. JOINT, TAPPING TEE & VALVE	= 1 EA.

SEWER	
8" SEWER LINE	= 1208 LF.
4" SEWER LATERALS	= 996 LF.
SEWER MANHOLES	= 8 EA.

LEGEND

	PROPOSED SEWER MAIN FOR WEST MESA ESTATES / PHASE 4
	EXISTING SEWER MANHOLE
	EXISTING WATER MAIN
	EXISTING FIRE HYDRANT
	PROPOSED SEWER MAIN
	PROPOSED SEWER MANHOLE
	PROPOSED WATER MAIN
	PROPOSED FIRE HYDRANT
	PROPOSED SEWER LATERAL
	PROPOSED DRIVEWAY LOCATION



PROJECT NAME: Pacific Bay Estates

This project was prepared in compliance with the San Vegas Valley Water District's technical requirements; however, this water plan is NOT APPROVED FOR CONSTRUCTION at this time.

[Signature] 7-31-91
DATE

[Signature] 3/25/92
DATE

[Signature] 8-2-91
DATE

GLV FIRE MARSHALL
REQUIRES FIRE FLOW = 1500 GPM
RESIDUAL PRESSURE = 20 PSI

NO.	DATE	BY	DESCRIPTION
1	7/31/91	PWC	AS-BUILT PLANS
2	8/1/91	ACB	REV. F.H. LOCATION & QTY.
3	8/1/91	ARS	REV. F.H. LOCATION & QTY.
4	8/1/91	ARS	REV. F.H. LOCATION & QTY.
5	8/1/91	ARS	REV. F.H. LOCATION & QTY.
6	8/1/91	ARS	REV. F.H. LOCATION & QTY.
7	8/1/91	ARS	REV. F.H. LOCATION & QTY.
8	8/1/91	ARS	REV. F.H. LOCATION & QTY.
9	8/1/91	ARS	REV. F.H. LOCATION & QTY.
10	8/1/91	ARS	REV. F.H. LOCATION & QTY.
11	8/1/91	ARS	REV. F.H. LOCATION & QTY.
12	8/1/91	ARS	REV. F.H. LOCATION & QTY.
13	8/1/91	ARS	REV. F.H. LOCATION & QTY.
14	8/1/91	ARS	REV. F.H. LOCATION & QTY.
15	8/1/91	ARS	REV. F.H. LOCATION & QTY.
16	8/1/91	ARS	REV. F.H. LOCATION & QTY.
17	8/1/91	ARS	REV. F.H. LOCATION & QTY.
18	8/1/91	ARS	REV. F.H. LOCATION & QTY.
19	8/1/91	ARS	REV. F.H. LOCATION & QTY.
20	8/1/91	ARS	REV. F.H. LOCATION & QTY.
21	8/1/91	ARS	REV. F.H. LOCATION & QTY.
22	8/1/91	ARS	REV. F.H. LOCATION & QTY.
23	8/1/91	ARS	REV. F.H. LOCATION & QTY.
24	8/1/91	ARS	REV. F.H. LOCATION & QTY.
25	8/1/91	ARS	REV. F.H. LOCATION & QTY.
26	8/1/91	ARS	REV. F.H. LOCATION & QTY.
27	8/1/91	ARS	REV. F.H. LOCATION & QTY.
28	8/1/91	ARS	REV. F.H. LOCATION & QTY.
29	8/1/91	ARS	REV. F.H. LOCATION & QTY.
30	8/1/91	ARS	REV. F.H. LOCATION & QTY.
31	8/1/91	ARS	REV. F.H. LOCATION & QTY.
32	8/1/91	ARS	REV. F.H. LOCATION & QTY.

SCALE (H)	SCALE (V)
1"=30'	1"=30'
DES. R.C.	
DR. A.R.S.	
SECTION 33 T.20 S. R.60 E.	

ALCA
ENGINEERING & SURVEYING, INC.
820 S. VALLEY VIEW BOULEVARD
LAS VEGAS, NEVADA 89107-4411
(702) 878-3358 FAX: 878-1092

PACIFIC BAY ESTATES
WATER AND SEWER PLAN
"AS-BUILT"
LAS VEGAS, NEVADA

JOB TITLE	
DWG NAME PBEWS.DWG	
DWG DATE 04/08/91	
JOB NO.	90110204
SHEET 5 OF 7	

(As Built) 3074-4207

