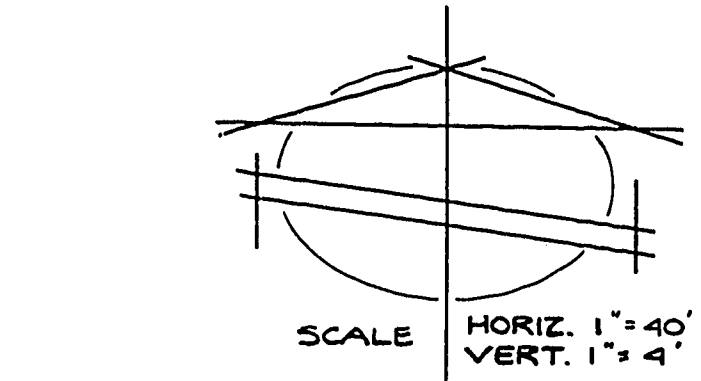
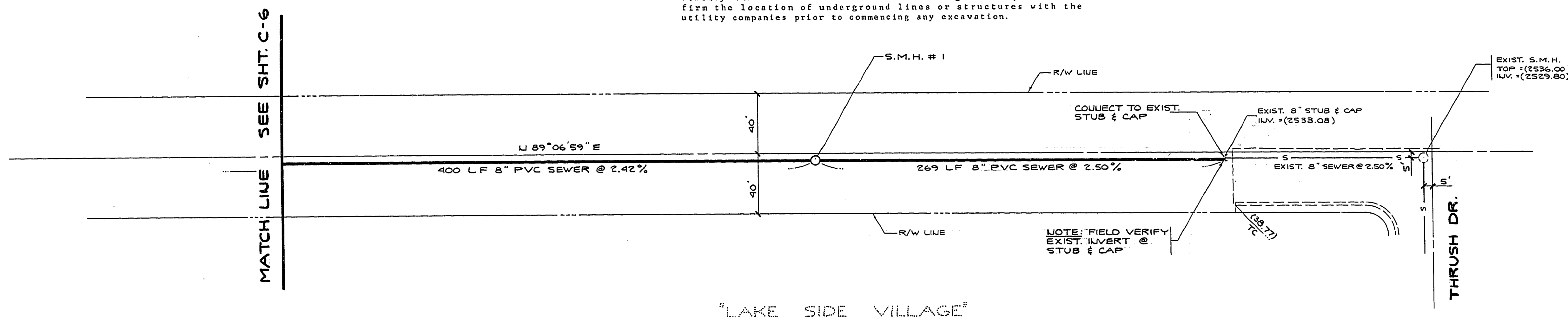


UTILITY NOTE

The location of underground utilities shown hereon has been determined from surface evidence of their existence or from information obtained from the utility companies. The Engineer accepts no liability for the existence or non-existence of utility lines. Contractors and others using this map must confirm the location of underground lines or structures with the utility companies prior to commencing any excavation.



BEUCH MARK

B.L.M. BRASS CAP LOCATED AT THE CENTER AT CHARLESTON BLVD. AND BLADED DIRT ROAD (BUFFALO DR.) APPROX. 600 FEET WEST FROM COOSW34 (SECTION CORNER)
ELEV. = 2527.60 CLV EUG. DEPT. DATUM

SEWER LINE NOTES

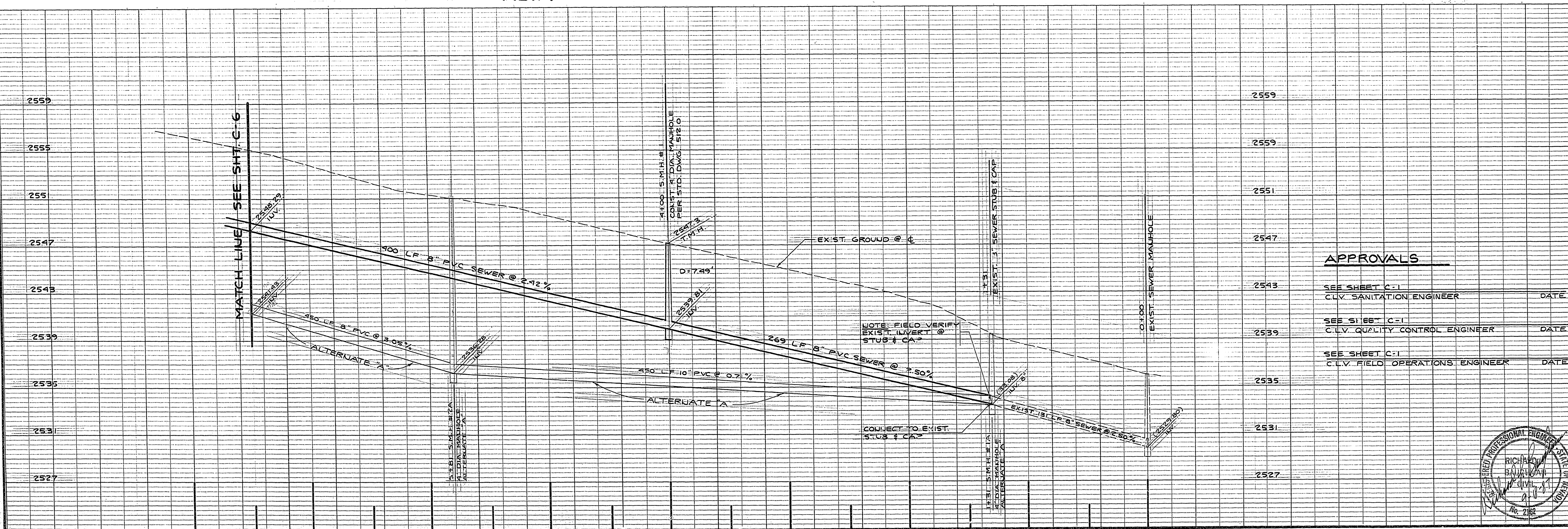
- All construction and materials shall be in accordance with Design and Construction Standards of the City of Las Vegas and the Uniform Standard Specifications for Public Works Construction Off-Site Improvements, Clark County Area, Nevada, 1976. In all cases, the City's criteria shall prevail over the Uniform Standard Specifications.
- City of Las Vegas drawings shall be applied to all construction.
- Sewer mains only to be laid in sewer trenches.
- All 1" house laterals to be laid at not less than minimum slopes.
- Sewer lateral locations to be marked in accordance with Standard Drawing 80-11 in the District Standards (Clark County Sanitation District).
- It shall be the contractor's responsibility to perform construction as per plans. Any additions, deletions, or changes shall first meet with the approval of the City of Las Vegas.
- If a lateral is under a driveway, concrete slab, or A.C. area, a cleanout shall be installed and extended to grade with a elected brass cap or with a water-tight box which as a metal cover marked "Sew. C.O."
- Cut sheets must be submitted to the City before construction will be permitted to start.
- All contractors installing sewer mains which will be under the jurisdiction of the City of Las Vegas must be Class "A" Contractors.
- Construction Concrete Collectors per Standard Drawing No. 512.9.

NOTE:
FOR SEWER QUANTITIES SEE SHT C-8

7+50 MATCH LINE
4+00 S.M.H. #1
1+31 EXIST. 8" STUB & CAP
0+00 EXIST. SEWER MAJHOLE
-0+05 EXIST. INTERSECTION

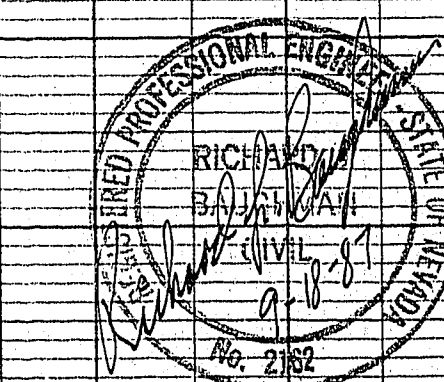
ALTA

DRIVE



APPROVALS

SEE SHEET C-1 CLV. SANITATION ENGINEER	DATE
SEE SHEET C-1 CLV. QUALITY CONTROL ENGINEER	DATE
SEE SHEET C-1 CLV. FIELD OPERATIONS ENGINEER	DATE



DATE: JULY 1987
DESIGN: D.S.T.
DRAWN: D.S.T.
CHECK: J.W.L.
SCALE: AS NOTED

PREPARED FOR: **MARK SCHUIPEL**

BAUGHMAN & TURNER
MINING ENGINEERS
LAND SURVEYORS
2325 WEST CHARLESTON BOULEVARD
LAS VEGAS, NEVADA 89102
702-870-9771

SEWER LINE DESIGN
SECTION 33, TOWNSHIP 20 SOUTH, RANGE 60 EAST, M.D.B.4M
CITY OF LAS VEGAS, CLARK COUNTY, NEVADA

PASO ROBLES ESTATES

SHEET 1 OF 6
PROJ. NO. 307Y-2488
F.B. 162, PG. 67