

PARADISE CANYON

(A COMMON INTEREST COMMUNITY SUBDIVISION)

BEING ALL OF LOT 1 OF BOOK 74, OF PLATS, PAGE 56, AND ALSO ALL OF THOSE PARCELS OF LAND ADDED TO SAID LOT 1, AND SHOWN AS PARCELS A, B & C ON THE RECORD OF SURVEY FOR BOUNDARY LINE ADJUSTMENT IN FILE _____, OF SURVEYS, PAGE _____, AND BEING PART OF THE SOUTHWEST QUARTER OF SECTION 30, TOWNSHIP 20 SOUTH, RANGE 60 EAST, M.D.M., CITY OF LAS VEGAS, CLARK COUNTY, NEVADA.

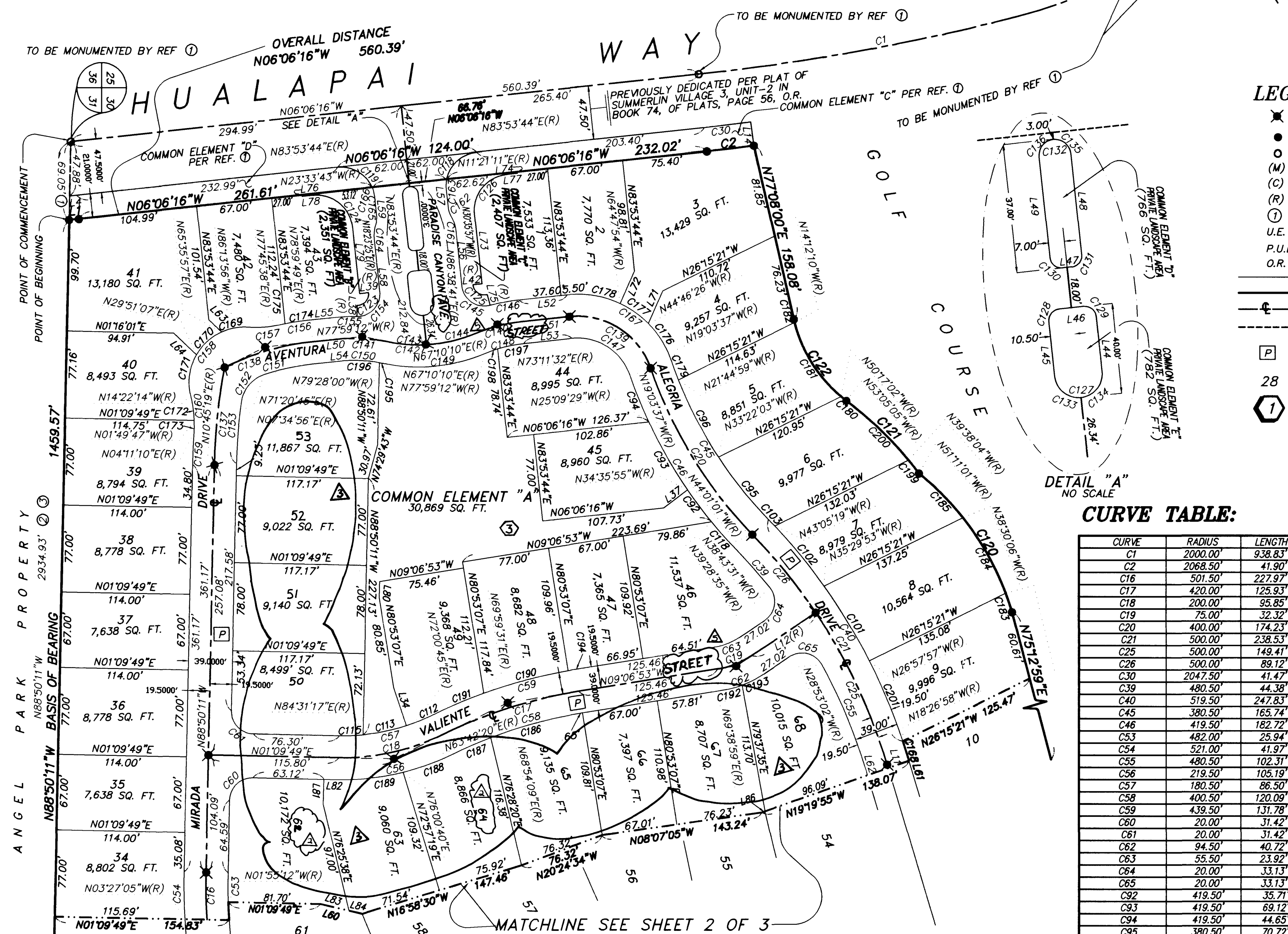
TOTAL LOTS: 68 LOTS
TOTAL ACREAGE: 19.72 ACRES

NOTES:

1) ALL REAR LOT CORNERS SHALL BE SET WITH A WAL AND TAG P.L.S. # 3161 ON BLOCK WALL AND ALL FRONT AND SIDE LOT CORNERS ADJOINING PUBLIC RIGHT-OF-WAY SHALL BE MARKED BY THE SAWCUTTING OF THE BACK OF CURBS ON THE PROLONGATION OF THE PROPERTY LINES.

2) ALL PRIVATE EASEMENTS, COMMON ELEMENT & PUBLIC DRAINAGE EASEMENTS SHALL BE MAINTAINED BY THE PARADISE CANYON HOMEOWNER'S ASSOCIATION.

SCALE: 1" = 60'



LEGEND:

- ✱ SET REBAR W/AL CAP PLS # 3161 W/REFERENCE MONUMENTS
- ANGLE POINT IN BOUNDARY FOUND MONUMENT AS NOTED
- (M) MEASURED BEARING AND/OR DISTANCE
- (C) CALCULATED BEARING AND/OR DISTANCE
- (R) RADIAL BEARING
- ① REFERENCE BEARING AND/OR DISTANCE
- U.E. UTILITY EASEMENT
- P.U.E. PUBLIC UTILITY EASEMENT
- O.R. OFFICIAL RECORDS OF CLARK COUNTY, NEVADA
- UNIT BOUNDARY LINE
- CENTERLINE OF PRIVATE DRIVES
- PRIVATE PARKING EASEMENT
- PRIVATE DRIVES, PUBLIC UTILITY EASEMENTS AND CITY OF LAS VEGAS SEWER EASEMENT.
- 28 LOT NUMBERS
- ① BLOCK NUMBERS

BASIS OF BEARINGS:

BEING THE SOUTH LINE OF THE SOUTHWEST QUARTER (SW 1/4) OF SECTION 30, TOWNSHIP 20 SOUTH, RANGE 60 EAST, M.D.M., AS SHOWN ON THE MAP IN FILE IN BOOK 71, OF PLATS, PAGE 13, OFFICIAL RECORDS OF CLARK COUNTY, NEVADA, WHICH BEARS: NORTH 88°50'11" WEST.

REFERENCES:

- ① PLATS BOOK 74, PAGE 56
- ② PARCEL MAPS FILE 82, PAGE 64
- ③ PARCEL MAPS FILE 63, PAGE 26

CURVE TABLE:

CURVE	RADIUS	LENGTH	TANGENT	DELTA
C137	519.50	86.97	43.59	09°35'30"
C138	221.50	79.59	40.23	20°35'17"
C139	68.50	92.11	54.53	77°02'39"
C140	144.50	42.18	21.24	16°43'34"
C141	144.50	45.69	23.04	18°07'04"
C142	130.50	79.36	40.95	34°50'38"
C143	130.50	35.00	17.61	15°22'08"
C144	130.50	44.36	22.39	19°28'31"
C145	200.00	34.57	23.43	09°02'15"
C146	164.00	25.87	12.96	09°02'15"
C147	49.00	65.89	39.01	77°02'39"
C148	125.00	36.49	18.38	16°43'34"
C149	150.00	91.22	47.07	34°50'38"
C150	125.00	39.53	19.93	18°07'04"
C151	202.00	44.25	22.21	12°32'59"
C152	30.00	33.39	18.66	63°45'48"
C153	500.00	56.01	28.04	06°25'07"
C154	20.00	33.90	22.65	97°06'18"
C155	164.00	20.34	10.18	07°06'18"
C156	241.00	25.81	12.92	06°08'06"
C157	100.00	27.94	14.06	16°00'26"
C158	49.00	92.48	67.61	108°08'18"
C159	539.00	28.43	14.22	03°01'21"
C160	100.00	32.99	16.34	18°33'23"
C161	30.00	12.83	6.51	24°29'41"
C162	20.00	8.55	4.34	24°29'41"
C163	30.00	9.14	4.61	17°27'27"
C164	30.00	12.83	6.51	24°29'41"
C165	20.00	8.55	4.34	24°29'41"
C166	30.00	9.14	4.61	17°27'27"
C167	88.00	118.33	70.05	77°02'39"
C168	49.00	24.09	12.29	28°10'06"
C169	49.00	30.57	15.80	35°44'51"
C170	49.00	37.82	19.91	44°13'20"
C171	100.00	21.89	10.99	12°32'27"
C172	100.00	10.50	5.25	06°00'56"
C173	241.00	20.60	10.31	04°53'55"
C174	241.00	5.20	2.60	01°41'11"
C175	88.00	39.49	20.08	25°42'48"
C176	88.00	30.76	15.54	20°01'28"
C177	88.00	48.08	24.66	31°18'22"
C178	380.50	17.86	8.93	02°41'23"
C179	125.00	6.11	3.06	02°48'03"
C180	125.00	78.72	40.71	36°04'52"
C181	125.00	2.92	1.46	01°20'10"
C182	250.00	17.76	8.88	04°04'09"
C183	250.00	77.44	39.03	17°44'55"
C184	250.00	55.33	27.78	12°40'54"
C185	400.50	83.67	41.99	11°58'10"
C186	400.50	36.33	18.18	05°11'49"
C187	219.50	47.14	23.66	12°18'21"
C188	219.50	58.05	29.19	15°09'09"
C189	439.50	77.50	38.85	10°06'13"
C190	439.50	48.29	24.13	06°17'11"
C191	94.50	18.53	9.30	11°14'08"
C192	94.50	22.19	11.15	13°27'16"
C193	439.50	6.00	3.00	00°46'56"
C194	125.00	3.23	1.61	01°28'48"
C195	125.00	36.30	18.28	16°38'16"
C196	125.00	23.35	11.71	10°42'12"
C197	125.00	13.14	6.58	06°01'22"
C198	325.00	14.99	7.50	02°38'34"
C199	325.00	76.29	38.32	13°27'01"
C200	519.50	77.22	38.68	08°30'59"
C201	519.50	77.22	38.68	08°30'59"

CURVE TABLE:

CURVE	RADIUS	LENGTH	TANGENT	DELTA
C1	2000.00	938.83	478.23	26°53'44"
C2	2068.50	41.90	20.95	01°09'38"
C6	501.50	227.97	115.08	26°02'44"
C17	420.00	125.93	63.44	17°10'47"
C18	200.00	95.85	48.86	27°27'29"
C19	75.00	32.32	16.41	24°41'24"
C20	400.00	174.23	88.52	24°57'24"
C21	500.00	238.53	121.58	27°19'58"
C25	500.00	148.41	75.26	17°07'15"
C26	500.00	89.12	44.68	10°12'44"
C30	2047.50	41.42	20.74	01°09'58"
C39	480.50	44.38	22.20	05°17'30"
C40	519.50	247.83	124.87	27°19'58"
C45	380.50	165.74	84.20	24°57'24"
C46	419.50	182.72	92.83	24°57'24"
C53	482.00	25.94	12.97	03°05'01"
C54	521.00	41.97	20.99	04°36'54"
C55	480.50	102.31	51.35	12°12'00"
C56	219.50	105.19	53.63	27°27'29"
C57	180.50	86.50	44.10	27°27'29"
C58	400.50	120.08	60.50	17°10'47"
C59	439.50	114.42	57.22	17°10'47"
C60	20.00	31.42	20.00	90°00'00"
C61	20.00	31.42	20.00	90°00'00"
C62	94.50	40.72	20.68	24°41'24"
C63	55.50	23.92	12.15	24°41'24"
C64	20.00	33.13	21.80	94°55'14"
C65	20.00	33.13	21.80	94°55'14"
C92	419.50	35.71	17.87	04°52'40"
C93	419.50	69.12	34.64	09°26'26"
C94	419.50	44.65	22.34	06°05'53"
C95	380.50	70.72	35.46	10°38'58"
C96	380.50	77.15	38.71	11°37'03"
C101	519.50	77.36	38.75	08°31'56"
C102	519.50	68.82	34.46	07°35'26"
C103	519.50	8.42	4.21	00°55'42"
C112	180.50	26.17	13.11	08°18'26"
C113	180.50	39.41	19.78	12°30'32"
C115	180.50	20.93	10.47	06°38'32"
C118	419.50	33.24	16.63	04°32'26"
C119	30.00	37.98	22.01	72°32'33"
C120	250.00	150.53	77.63	34°29'59"
C121	325.00	91.29	45.95	16°05'35"
C122	125.00	87.74	45.77	40°13'05"
C123	10.00	16.95	11.32	97°06'18"
C124	32.00	50.27	32.00	90°00'00"
C125	10.00	17.29	11.72	99°02'15"
C126	32.00	50.27	32.00	90°00'00"
C127	10.50	33.00	<INFINITE>	180°00'00"
C128	5.00	7.85	5.00	90°00'00"
C129	5.00	7.85	5.00	90°00'00"
C130	5.00	7.85	5.00	90°00'00"
C131	5.00	7.85	5.00	90°00'00"
C132	7.00	21.99	<INFINITE>	180°00'00"
C133	10.50	16.50	10.51	90°00'00"
C134	10.50	16.50	10.51	90°00'00"
C135	7.00	11.00	7.00	90°00'00"
C136	7.00	11.00	7.00	90°00'00"

NUMBERED COURSES:

LINE	DIRECTION	DISTANCE	LINE	DIRECTION	DISTANCE
L1	N06°05'51"W	8.73'	L57	N83°53'44"E	16.00'
L4	N06°05'51"W	8.06'	L58	N83°53'44"E	47.04'
L12(R)	N33°48'17"W	68.22'	L59	N83°53'44"E	16.00'
L14	N82°44'06"E	21.00'	L60	N73°52'38"E	8.43'
L13	N71°31'03"E	35.42'	L63	N43°35'38"E	15.78'
L37	N37°08'16"W	26.80'	L64	N43°35'38"E	27.07'
L38	N88°59'58"W	10.00'	L71	N66°08'31"W	31.60'
L39	N06°06'16"W	8.00'	L72	N66°08'31"W	31.58'
L42	N06°06'16"W	8.00'	L73	N83°53'44"E	62.31'
L44	N83°53'44"E	24.49'	L74	N83°53'44"E	1.33'
L45	N83°53'44"E	24.49'	L75	N74°51'29"E	10.00'
L46	N06°06'16"W	11.00'	L76	N83°53'44"E	1.33'
L47	N06°06'16"W	4.00'	L77	N06°06'16"W	9.50'
L48	N83°53'44"E	45.00'	L78	N06°06'16"W	9.50'
L49	N83°53'44"E	45.00'	L79	N83°53'44"E	59.44'
L50	N06°06'16"W	23.16'	L80	N88°50'11"W	14.22'
L51	N06°06'16"W	43.10'	L81	N88°50'11"W	22.08'
L52	N06°06'16"W	43.10'	L82	N01°09'49"E	13.18'
L53	N06°06'16"W	43.10'	L83	N13°10'29"E	25.81'
L54	N06°06'16"W	23.16'	L84	N13°10'29"E	12.47'
L55	N06°06'16"W	23.16'	L86	N19°19'55"W	2.94'
L56	N83°53'44"E	49.91'			

P. 1992-1\MP\1922HC1 Thu Aug 21 11:02:57 1997 Plotted by: CTP

PREPARED BY: **HLSAket**
 Planning & Engineering - Surveying
 401 N. BUFFALO DR. SUITE 100
 LAS VEGAS, NEVADA 89108
 (702) 242-4800

PROJECT NO. 1922-1
 SHEET 3 of 15

SCALE: 1" = 60'

DESIGN BY: GLR
 DRAWN BY: GLR
 DATE: 1-97

REVISIONS:

NO.	DATE	BY	REVISION
1	10/10/97	GLR	CHANGE LOT NUMBERS
2	10/10/97	GLR	CHANGE LOT NUMBERS
3	10/10/97	GLR	CHANGE LOT NUMBERS
4	10/10/97	GLR	CHANGE LOT NUMBERS
5	10/10/97	GLR	CHANGE LOT NUMBERS
6	10/10/97	GLR	CHANGE LOT NUMBERS
7	10/10/97	GLR	CHANGE LOT NUMBERS
8	10/10/97	GLR	CHANGE LOT NUMBERS
9	10/10/97	GLR	CHANGE LOT NUMBERS
10	10/10/97	GLR	CHANGE LOT NUMBERS
11	10/10/97	GLR	CHANGE LOT NUMBERS
12	10/10/97	GLR	CHANGE LOT NUMBERS
13	10/10/97	GLR	CHANGE LOT NUMBERS
14	10/10/97	GLR	CHANGE LOT NUMBERS
15	10/10/97	GLR	CHANGE LOT NUMBERS
16	10/10/97	GLR	CHANGE LOT NUMBERS
17	10/10/97	GLR	CHANGE LOT NUMBERS
18	10/10/97	GLR	CHANGE LOT NUMBERS
19	10/10/97	GLR	CHANGE LOT NUMBERS
20	10/10/97	GLR	CHANGE LOT NUMBERS
21	10/10/97	GLR	CHANGE LOT NUMBERS
22	10/10/97	GLR	CHANGE LOT NUMBERS
23	10/10/97	GLR	CHANGE LOT NUMBERS
24	10/10/97	GLR	CHANGE LOT NUMBERS
25	10/10/97	GLR	CHANGE LOT NUMBERS
26	10/10/97	GLR	CHANGE LOT NUMBERS
27	10/10/97	GLR	CHANGE LOT NUMBERS
28	10/10/97	GLR	CHANGE LOT NUMBERS
29	10/10/97	GLR	CHANGE LOT NUMBERS
30	10/10/97	GLR	CHANGE LOT NUMBERS
31	10/10/97	GLR	CHANGE LOT NUMBERS
32	10/10/97	GLR	CHANGE LOT NUMBERS
33	10/10/97	GLR	CHANGE LOT NUMBERS
34	10/10/97	GLR	CHANGE LOT NUMBERS
35	10/10/97	GLR	CHANGE LOT NUMBERS
36	10/10/97	GLR	CHANGE LOT NUMBERS
37	10/10/97	GLR	CHANGE LOT NUMBERS
38	10/10/97	GLR	CHANGE LOT NUMBERS
39	10/10/97	GLR	CHANGE LOT NUMBERS
40	10/10/97	GLR	CHANGE LOT NUMBERS
41	10/10/97	GLR	CHANGE LOT NUMBERS
42	10/10/97	GLR	CHANGE LOT NUMBERS
43	10/10/97	GLR	CHANGE LOT NUMBERS
44	10/10/97	GLR	CHANGE LOT NUMBERS
45	10/10/97	GLR	CHANGE LOT NUMBERS
46	10/10/97	GLR	CHANGE LOT NUMBERS
47	10/10/9		

