

VICINITY MAP
NO SCALE

Call before you Dig.
1-800-227-2600
UNDERGROUND SERVICE (USAS)

LEGEND

EXISTING	PROPOSED	DESCRIPTION
---	---	RIGHT OF WAY - PROPERTY LINE
---	---	CENTERLINE
---	---	WATER LINE
---	---	SEWER - 12" DIA. PIPE
---	---	GAS LINE
---	---	STORM DRAIN
---	---	POWER LINE - POWER POLE
---	---	TELEPHONE LINE
---	---	FIRE HYDRANT
---	---	WATER VALVE
---	---	METERS - 1" & 2" SIZES
---	---	REDUCTION
---	---	SHOULDER
---	---	CLEARCUT
---	---	STREET LIGHT
---	---	SCREENED FASHION POLE
---	---	WIRE OR CABLE LINK FENCE
---	---	BRUSH ENCLOSURE
---	---	GRADE BREAK
---	---	BARBUT
---	---	EDGE OF PAVEMENT
---	---	CORNER
---	---	FLOW LINE
---	---	FINISH FLOOR
---	---	FINISH GRADE
---	---	EXISTING - 1" VISH GRADE
---	---	TOP OF C.
---	---	CONCRETE
---	---	A.G. PAVEN. - FINISHED

NOTE:
EXISTING UTILITY LOCATIONS SHOWN HEREON ARE APPROXIMATE ONLY. IT SHALL BE THE CONTRACTOR'S RESPONSIBILITY TO DETERMINE THE EXACT VERTICAL AND HORIZONTAL LOCATION OF ALL EXISTING UNDERGROUND UTILITIES PRIOR TO COMMENCING CONSTRUCTION. NO REPRESENTATION IS MADE THAT ALL EXISTING UTILITIES ARE SHOWN HEREON. THE ENGINEER ASSUMES NO RESPONSIBILITY FOR UTILITIES NOT SHOWN OR UTILITIES NOT SHOWN IN THEIR PROPER LOCATION. CALL BEFORE YOU DIG. 1-800-227-2600.

BENCHMARK
BRENNER & ASSOCIATES, INC. BENCHMARK - RR SPIKE IN POWER POLE 200' S.W. OF INTERSECTION OF SMOKE RANCH ROAD AND BUFFALO DRIVE ELEV. = 2413.54

BASIS OF BEARINGS
THE NORTH LINE OF SECTION 22, TOWNSHIP 20 SOUTH, RANGE 60 EAST, M.D.M., LAS VEGAS, NEVADA ALSO BEING THE CENTERLINE OF SMOKE RANCH ROAD, BEARS SOUTH 89° 40' 36" EAST PER RECORD OF SURVEY, FILE 42, PAGE 33, OFFICIAL RECORDS OF CLARK COUNTY, NEVADA

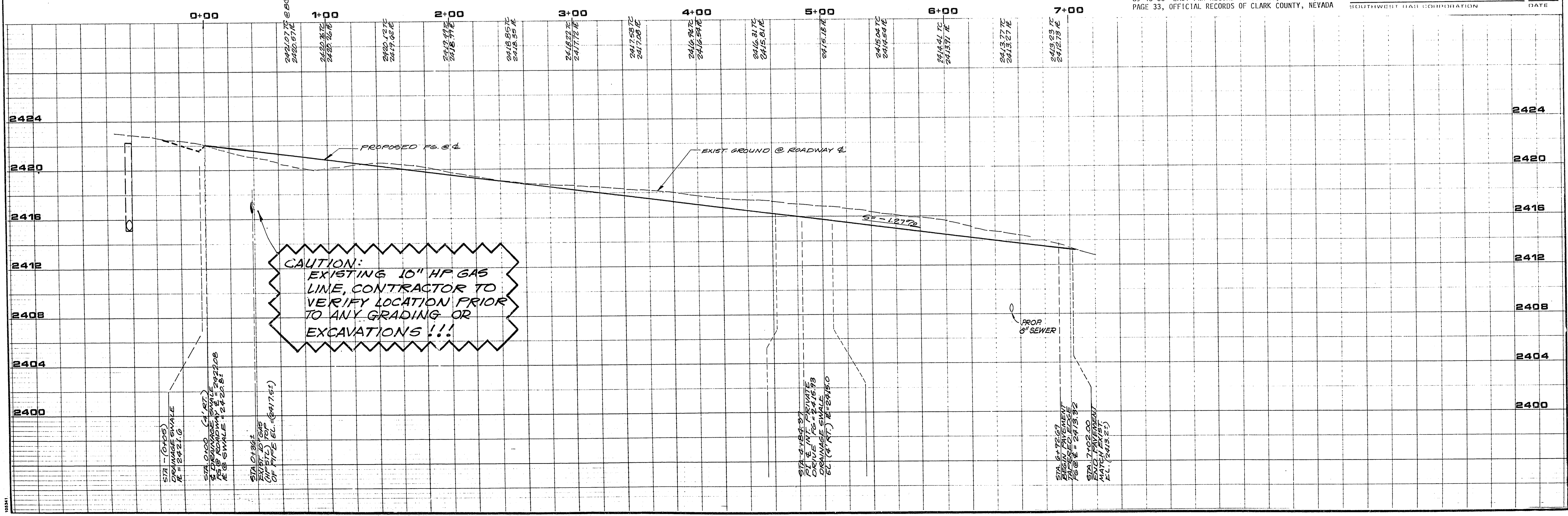
APPROVALS

 JAKE P. DE SARMIENTO, DATE 07-21-89
 SOUTHWEST FAB CORPORATION, DATE

CURVE DATA TABLE

NO.	RADIUS	DELTA	LENGTH	TANGENT	I.O.
1	25.00'	87°25'49"	38.15'	23.90'	RE
2	30.00'	87°25'49"	45.69'	29.68'	BC
3	10.00'	180°	62.83'	0	BC

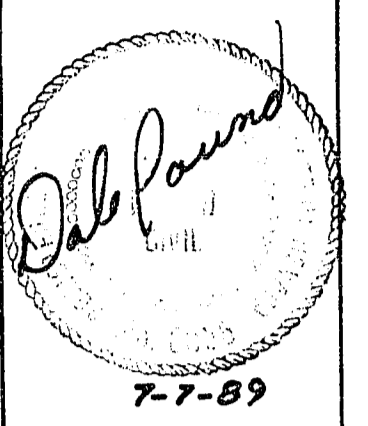
CALICHE WAY
SCALE 1"=40' HORIZONTAL
1"=4' VERTICAL



CAUTION:
EXISTING 10" HP GAS LINE, CONTRACTOR TO VERIFY LOCATION PRIOR TO ANY GRADING OR EXCAVATIONS !!!

REVISIONS

NO.	DESCRIPTION/DATE	BY



SPARKS, NEVADA
LAS VEGAS, NEVADA
incorporated
S&A
ENGINEERING PLANNERS

NEVADA

PORT SIDE WAY STREET IMPROVEMENTS
PACIFIC HARBORS V
A PORTION OF THE NW 1/4 OF SECTION 22, T. 20S., R. 60E. M.D.M.

LAS VEGAS

JOB NO. 2-384-11-1
DESIGNED DP/MAH
DRAWN MAH
COMP.
CHECKED
DATE MARCH 1989

10
10 of 14 SHEETS
107Y-4060-V