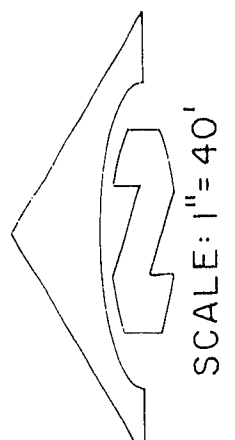


SURVEYOR'S CERTIFICATION

I, RITA M. LUMOS, A DULY REGISTERED LAND SURVEYOR IN THE STATE OF NEVADA, DO HEREBY CERTIFY THAT STREET AND REFERENCE MONUMENTS SHOWN ON THIS MAP HAVE BEEN MEASURED AND ESTABLISHED IN THE FIELD BY ME OR UNDER MY DIRECT SUPERVISION AND COMPLETED ON THE 11TH DAY OF MAY, 1989.

RITA M. LUMOS
REGISTERED LAND SURVEYOR NO. 5094

Rita M. Lumos
6/6/89



NUMBERED COURSES

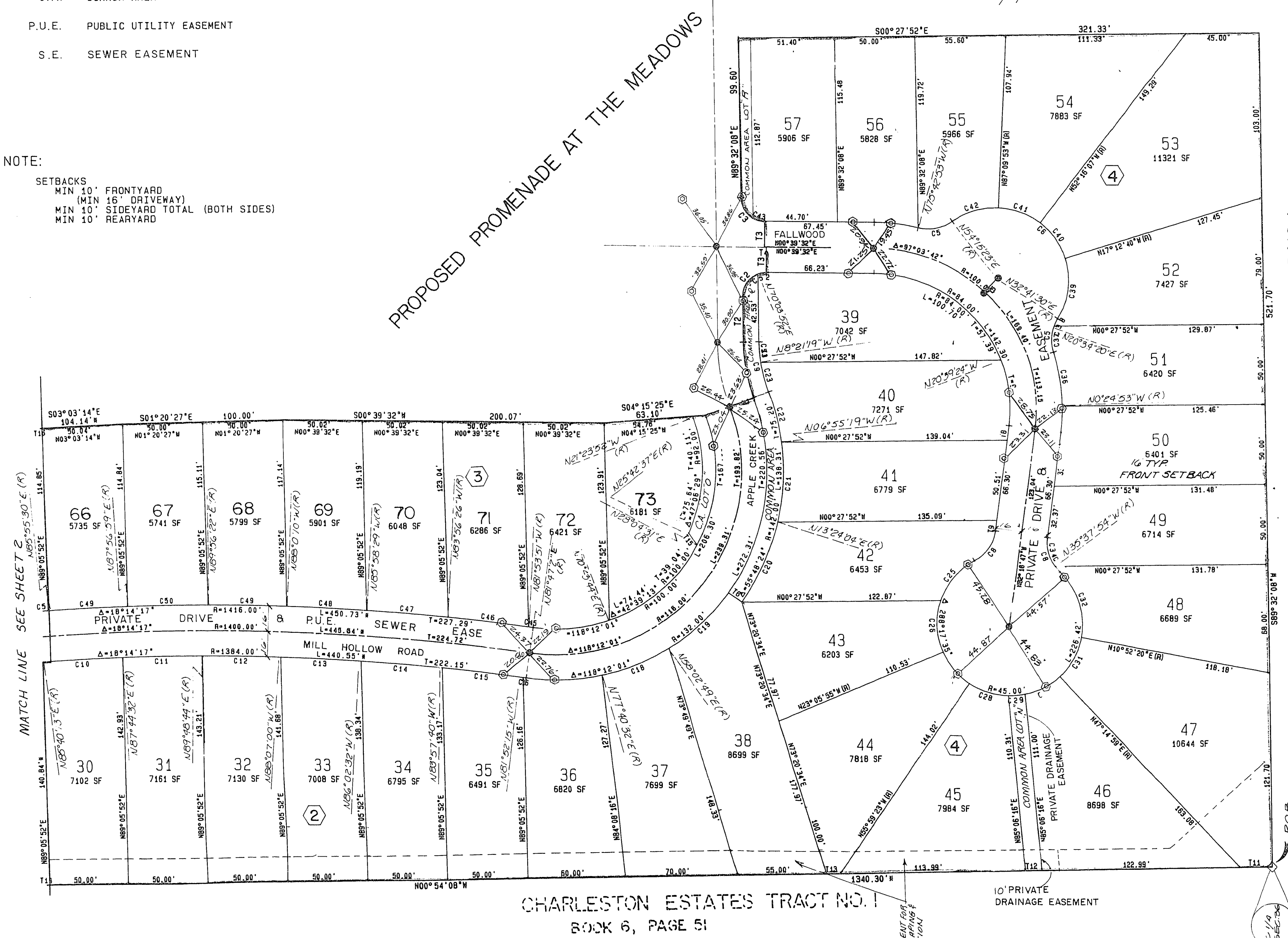
REF. NO.	BEARING	DISTANCE
T 1	S19°58'21"E (R)	32.00
T 2	N89°32'08"E	25.38
T 3	N 0°00'00"E	16.00
T 4	N35°48'37"E (R)	10.00
T 5	N89°32'08"E	6.14
T 6	N82°16'47"W (R)	6.65
T 7	N 0°00'00"E	10.00
T 8	N 0°00'00"E	20.00
T 9	N 0°00'00"E	10.00
T 10	N 0°00'00"E	9.67
T 11	N 0°00'00"E	50.00
T 12	N 0°00'00"E	50.00
T 13	N 0°00'00"E	50.00
T 14	N 0°00'00"E	50.00
T 15	N 0°00'00"E	50.00

LEGEND

- SET CENTERLINE POINTS OF 5/8" REBAR W/ ALUM. CAP RLS 5094
- ⊙ SET BRASS CAP IN CURB RLS 5094
- ◇ SECTIONAL TIE CORNERS
- ② BLOCK NUMBERS
- 13 LOT NUMBERS
- C.A. COMMON AREA
- P.U.E. PUBLIC UTILITY EASEMENT
- S.E. SEWER EASEMENT

NOTE:

- SETBACKS
- MIN 10' FRONTYARD
- MIN 10' DRIVEWAY
- MIN 10' SIDEYARD TOTAL (BOTH SIDES)
- MIN 10' REARYARD



CURVE DATA

CURVE NO.	DELTA	RADIUS	LENGTH	TANGENT
C1	104.00	104.00	35.44	17.88
C2	15.00	15.00	23.86	12.30
C3	115.00	115.00	39.27	14.71
C4	115.00	115.00	39.27	14.71
C5	115.00	115.00	39.27	14.71
C6	115.00	115.00	39.27	14.71
C7	115.00	115.00	39.27	14.71
C8	115.00	115.00	39.27	14.71
C9	115.00	115.00	39.27	14.71
C10	115.00	115.00	39.27	14.71
C11	115.00	115.00	39.27	14.71
C12	115.00	115.00	39.27	14.71
C13	115.00	115.00	39.27	14.71
C14	115.00	115.00	39.27	14.71
C15	115.00	115.00	39.27	14.71
C16	115.00	115.00	39.27	14.71
C17	115.00	115.00	39.27	14.71
C18	115.00	115.00	39.27	14.71
C19	115.00	115.00	39.27	14.71
C20	115.00	115.00	39.27	14.71
C21	115.00	115.00	39.27	14.71
C22	115.00	115.00	39.27	14.71
C23	115.00	115.00	39.27	14.71
C24	115.00	115.00	39.27	14.71
C25	115.00	115.00	39.27	14.71
C26	115.00	115.00	39.27	14.71
C27	115.00	115.00	39.27	14.71
C28	115.00	115.00	39.27	14.71
C29	115.00	115.00	39.27	14.71
C30	115.00	115.00	39.27	14.71
C31	115.00	115.00	39.27	14.71
C32	115.00	115.00	39.27	14.71
C33	115.00	115.00	39.27	14.71
C34	115.00	115.00	39.27	14.71
C35	115.00	115.00	39.27	14.71
C36	115.00	115.00	39.27	14.71
C37	115.00	115.00	39.27	14.71
C38	115.00	115.00	39.27	14.71
C39	115.00	115.00	39.27	14.71
C40	115.00	115.00	39.27	14.71
C41	115.00	115.00	39.27	14.71
C42	115.00	115.00	39.27	14.71
C43	115.00	115.00	39.27	14.71
C44	115.00	115.00	39.27	14.71
C45	115.00	115.00	39.27	14.71
C46	115.00	115.00	39.27	14.71
C47	115.00	115.00	39.27	14.71
C48	115.00	115.00	39.27	14.71
C49	115.00	115.00	39.27	14.71
C50	115.00	115.00	39.27	14.71
C51	115.00	115.00	39.27	14.71
C52	115.00	115.00	39.27	14.71
C53	115.00	115.00	39.27	14.71
C54	115.00	115.00	39.27	14.71
C55	115.00	115.00	39.27	14.71
C56	115.00	115.00	39.27	14.71
C57	115.00	115.00	39.27	14.71
C58	115.00	115.00	39.27	14.71
C59	115.00	115.00	39.27	14.71
C60	115.00	115.00	39.27	14.71
C61	115.00	115.00	39.27	14.71
C62	115.00	115.00	39.27	14.71
C63	115.00	115.00	39.27	14.71
C64	115.00	115.00	39.27	14.71
C65	115.00	115.00	39.27	14.71
C66	115.00	115.00	39.27	14.71
C67	115.00	115.00	39.27	14.71
C68	115.00	115.00	39.27	14.71
C69	115.00	115.00	39.27	14.71
C70	115.00	115.00	39.27	14.71
C71	115.00	115.00	39.27	14.71
C72	115.00	115.00	39.27	14.71
C73	115.00	115.00	39.27	14.71
C74	115.00	115.00	39.27	14.71
C75	115.00	115.00	39.27	14.71
C76	115.00	115.00	39.27	14.71
C77	115.00	115.00	39.27	14.71
C78	115.00	115.00	39.27	14.71
C79	115.00	115.00	39.27	14.71
C80	115.00	115.00	39.27	14.71
C81	115.00	115.00	39.27	14.71
C82	115.00	115.00	39.27	14.71
C83	115.00	115.00	39.27	14.71
C84	115.00	115.00	39.27	14.71
C85	115.00	115.00	39.27	14.71
C86	115.00	115.00	39.27	14.71
C87	115.00	115.00	39.27	14.71
C88	115.00	115.00	39.27	14.71
C89	115.00	115.00	39.27	14.71
C90	115.00	115.00	39.27	14.71
C91	115.00	115.00	39.27	14.71
C92	115.00	115.00	39.27	14.71
C93	115.00	115.00	39.27	14.71
C94	115.00	115.00	39.27	14.71
C95	115.00	115.00	39.27	14.71
C96	115.00	115.00	39.27	14.71
C97	115.00	115.00	39.27	14.71
C98	115.00	115.00	39.27	14.71
C99	115.00	115.00	39.27	14.71
C100	115.00	115.00	39.27	14.71

CHARLESTON HEIGHTS TRACT NO. 1
BOOK 5, PAGE 52

TOTAL AREA: 14.913 Acres ±
TOTAL N° OF LOTS: 73

BASIS OF BEARINGS

North 00°54'08" West; being the west line of the Southwest quarter (SW 1/4) of the Northeast quarter (NE 1/4) of Section 36, Township 20 South, Range 60 East, M.D.W. as shown by a map on file in the Clark County, Nevada Recorder's Office, in File 46 of Surveys, Page 54.

MONUMENTATION MAP
FOR
PROMENADE AT THE MEADOWS ESTATES
POR. S1/2, NE1/4, SECTION 36, T20S, R60E, M.D.M.
CITY OF LAS VEGAS, CLARK COUNTY, NEVADA

SEA ENGINEERS/PLANNERS
SPARKS, NEVADA
LAS VEGAS, NEVADA
PHOENIX, ARIZONA

JOB NO. 2-525-001-B71
DESIGNED WCH
DRAWN HP 1000 A800
COMP
CHECKED SP
DATE JUNE 5, 1989
SHEET NO. 1 OF 2 SHEETS