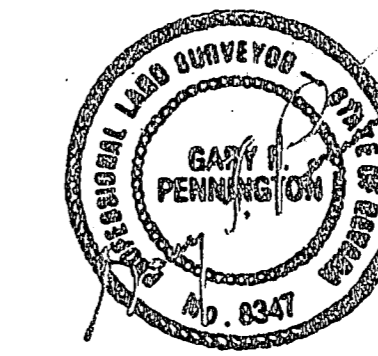


SURVEYOR'S CERTIFICATION

I, GARY F. PENNINGTON, A PROFESSIONAL LAND SURVEYOR IN THE STATE OF NEVADA, DO HEREBY CERTIFY THAT THE STREET AND REFERENCE MONUMENTS SHOWN ON THIS MAP HAVE BEEN MEASURED AND ESTABLISHED IN THE FIELD BY ME OR UNDER MY DIRECT SUPERVISION AND COMPLETED ON THE 26TH DAY OF JULY 1990.

GARY F. PENNINGTON
PROFESSIONAL LAND SURVEYOR NO. 8347



CURVE NO.	DELTA	RADIUS	LENGTH	TANGENT	CHORD
C 1	96°52'36"	15.00	23.27	14.71	21.00
C 2	91°07'24"	15.00	23.86	15.30	21.42
C 3	89°31'28"	104.00	35.44	17.89	35.27
C 4	89°24'43"	100.00	66.79	39.82	67.44
C 5	89°03'57"	100.00	68.18	35.48	66.87
C 6	87°49'08"	100.00	66.01	34.26	64.92
C 7	85°31'25"	120.00	40.89	20.65	40.70
C 8	18°01'00"	144.00	45.28	22.83	45.09

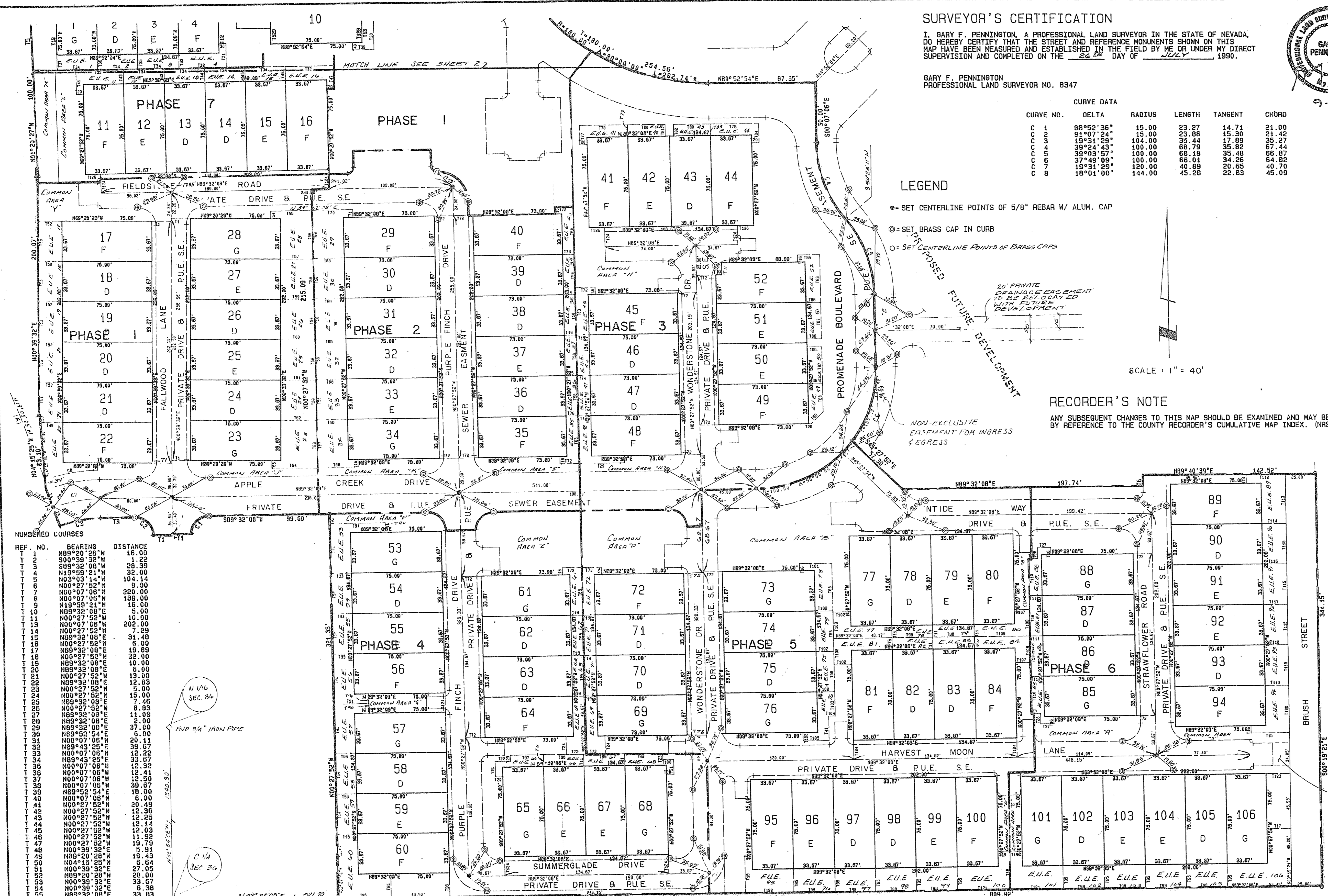
LEGEND

- = SET CENTERLINE POINTS OF 5/8" REBAR W/ ALUM. CAP
- ⊙ = SET BRASS CAP IN CURB
- = SET CENTERLINE POINTS OF BRASS CAPS

SCALE 1" = 40'

RECORDER'S NOTE

ANY SUBSEQUENT CHANGES TO THIS MAP SHOULD BE EXAMINED AND MAY BE DETERMINED BY REFERENCE TO THE COUNTY RECORDER'S CUMULATIVE MAP INDEX. (NRS 278.5695)



REF. NO.	BEARING	DISTANCE
T 1	N89°00'28"W	15.00
T 2	S00°39'32"E	1.23
T 3	S89°32'08"W	20.39
T 4	N11°58'24"E	32.83
T 5	N03°03'14"W	104.14
T 6	N00°27'52"W	9.00
T 7	N00°07'06"W	169.00
T 8	N00°07'06"W	169.00
T 9	N19°59'21"W	16.00
T 10	N89°32'08"W	5.00
T 11	N00°27'52"W	10.00
T 12	N00°27'52"W	202.00
T 13	N00°07'06"W	7.22
T 14	N89°32'08"E	31.48
T 15	N89°32'08"E	19.60
T 16	N89°32'08"E	6.00
T 17	N00°27'52"W	32.00
T 18	N89°32'08"E	10.00
T 19	N89°32'08"E	6.00
T 20	N00°27'52"W	12.83
T 21	N00°27'52"W	6.00
T 22	N00°27'52"W	15.00
T 23	N89°32'08"E	7.46
T 24	N89°32'08"E	6.00
T 25	N89°32'08"E	11.09
T 26	N89°32'08"E	9.00
T 27	N00°07'06"W	5.00
T 28	N89°32'08"E	20.11
T 29	N89°43'25"E	39.87
T 30	N00°07'06"W	12.22
T 31	N89°43'25"E	33.67
T 32	N00°07'06"W	12.41
T 33	N00°07'06"W	12.50
T 34	N89°52'54"E	27.50
T 35	N89°52'54"E	18.00
T 36	N00°27'52"W	20.48
T 37	N00°27'52"W	12.36
T 38	N00°27'52"W	10.25
T 39	N00°27'52"W	12.03
T 40	N00°27'52"W	11.92
T 41	N00°27'52"W	15.79
T 42	N00°39'32"E	5.91
T 43	N89°20'28"W	19.43
T 44	N04°15'26"E	33.67
T 45	N00°39'32"E	27.05
T 46	N89°20'28"W	20.00
T 47	N00°39'32"E	33.67
T 48	N00°39'32"E	6.38
T 49	N89°32'08"E	33.93
T 50	N89°32'08"E	40.72
T 51	N00°27'52"W	26.62
T 52	N89°20'28"W	33.67
T 53	N89°20'28"W	27.28
T 54	N89°20'28"W	27.94
T 55	N89°20'28"W	29.90
T 56	N89°20'28"W	29.26
T 57	N00°27'52"W	39.67
T 58	N89°20'28"W	9.76
T 59	N00°27'52"W	8.00
T 60	N89°20'28"W	9.56
T 61	N89°20'28"W	15.34
T 62	N89°31'50"E	18.00
T 63	N89°32'08"E	14.14
T 64	N00°27'52"W	20.17
T 65	N89°32'08"E	19.59
T 66	N89°32'08"E	39.67
T 67	N89°32'08"E	14.14
T 68	N89°32'08"E	12.00
T 69	N89°32'08"E	12.00
T 70	N89°32'08"E	17.00
T 71	N89°32'08"E	46.00
T 72	N00°27'52"W	15.23
T 73	N89°52'54"E	39.67
T 74	N00°27'52"W	9.99

REF. NO.	BEARING	DISTANCE
T 96	N89°32'08"E	43.50
T 97	N89°32'08"E	26.83
T 98	N89°32'08"E	33.67
T 99	N89°32'08"E	30.83
T 100	N89°32'08"E	6.83
T 101	N89°32'08"E	26.50
T 102	N89°32'08"E	14.14
T 103	N00°27'52"W	20.17
T 104	N89°32'08"E	5.50
T 105	N89°32'08"E	14.14
T 106	N00°27'52"W	8.00
T 107	N89°32'08"E	29.00
T 108	N00°27'52"W	11.00
T 109	N89°32'08"E	45.21
T 110	N00°27'52"W	30.83
T 111	N89°32'08"E	10.54

REF. NO.	BEARING	DISTANCE
T 112	N89°40'39"E	32.02
T 113	N00°19'21"W	40.88
T 114	N89°32'08"E	19.92
T 115	N00°19'21"W	33.67
T 116	N89°32'08"E	19.83
T 117	N89°32'08"E	19.79
T 118	N89°32'08"E	19.67
T 119	N89°32'08"E	19.59
T 120	N00°19'21"W	39.67
T 121	N89°32'08"E	12.00
T 122	N89°32'08"E	39.67
T 123	N89°40'39"E	20.00
T 124	N00°19'21"W	16.00
T 125	N89°52'54"E	16.00
T 126	N89°32'08"E	13.00
T 127	N00°07'06"W	13.00

REF. NO.	BEARING	DISTANCE
T 128	N00°07'06"W	71.03
T 129	N00°07'06"W	33.67

REF. NO.	BEARING	DISTANCE
T 130	N89°32'08"E	32.02
T 131	N00°19'21"W	40.88
T 132	N89°32'08"E	19.92
T 133	N00°19'21"W	33.67
T 134	N89°32'08"E	19.83
T 135	N89°32'08"E	19.79
T 136	N89°32'08"E	19.67
T 137	N89°32'08"E	19.59
T 138	N00°19'21"W	39.67
T 139	N89°32'08"E	12.00
T 140	N89°32'08"E	39.67
T 141	N89°40'39"E	20.00
T 142	N00°19'21"W	16.00
T 143	N89°52'54"E	16.00
T 144	N89°32'08"E	13.00
T 145	N00°07'06"W	13.00

MONUMENTATION MAP
FOR
PROMENADE AT THE MEADOWS
FOR SV2, NE 1/4, SECTION 36, T20S, R06E, M.D.M.
CITY OF LAS VEGAS, CLARK COUNTY, NEVADA

JOB NO. 2-525-001-875
DESIGNED
DRAWN HP1000 A600
COMP. M.E.
CHECKED R.F.F./SL
DATE SEP 1990
SHEET NO. 1 OF 2 SHEETS



SPARKS, NEVADA
LAS VEGAS, NEVADA
PHOENIX, ARIZONA