

Book 870304

MONUMENTATION LOCATION PLAN

PIONEER ESTATES

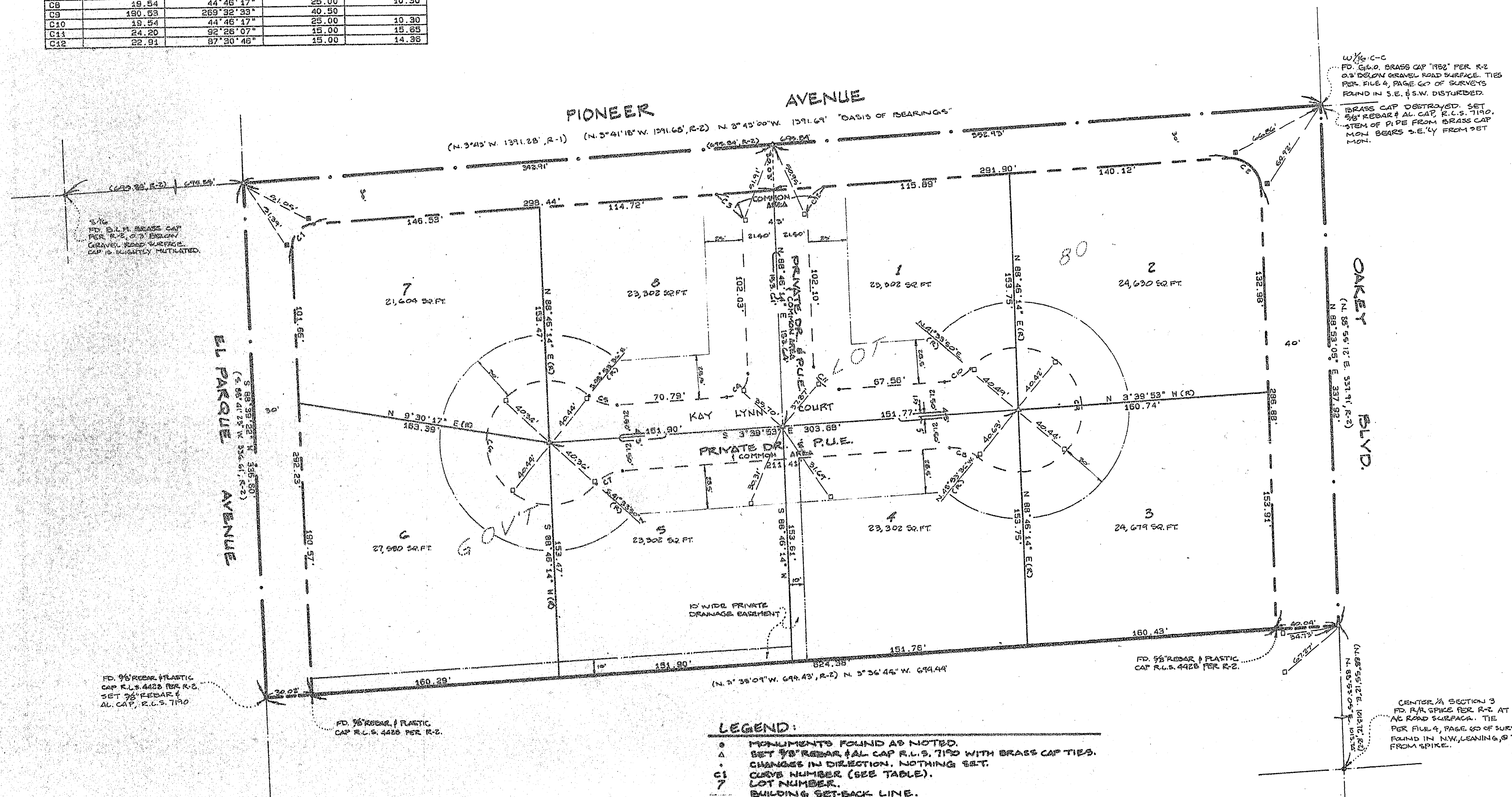
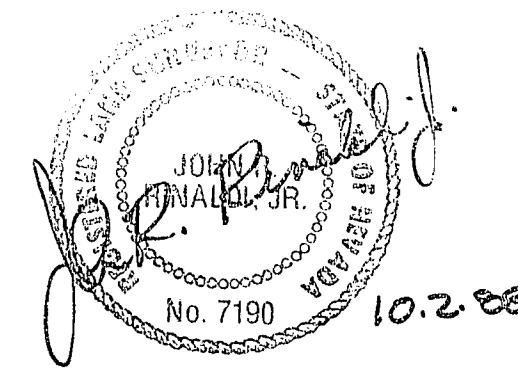
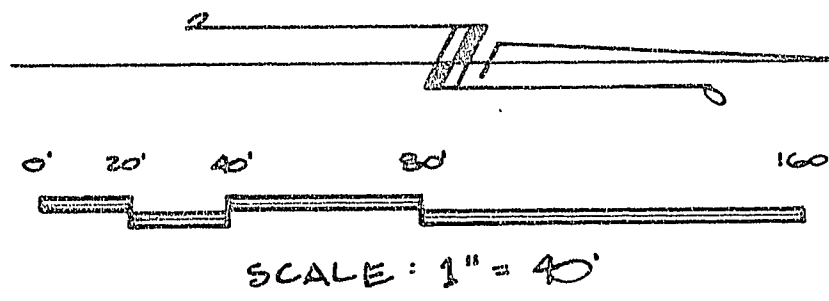
A PORTION OF THE N.W. 1/4 OF THE N.E. 1/4 OF THE S.W. 1/4 OF SECTION 3, T. 21 S., R. 60 E., CITY OF LAS VEGAS, STATE OF NEVADA.

SURVEYOR'S CERTIFICATE:

I, JOHN R. RINALDI, JR., A DULY REGISTERED LAND SURVEYOR IN THE STATE OF NEVADA, DO HEREBY CERTIFY THAT THE MONUMENTS HAVE BEEN SET AND THE TIE DISTANCES ESTABLISHED AS SHOWN HEREON. THIS SURVEY WAS COMPLETED ON SEPT 28, 1988.

CURVE TABLE:

CURVE	ARC	DELTA	RADIUS	TAN LENGTH
C1	22.94	87°37'38"	15.00	14.39
C2	22.92	82°38'08"	20.00	20.93
C3	24.21	82°29'14"	15.00	15.67
C4	22.92	87°33'59"	15.00	14.38
C5	19.54	44°48'17"	25.00	10.30
C6	190.53	269°32'33"	40.50	10.30
C7	19.54	44°48'17"	25.00	10.30
C8	19.54	44°48'17"	25.00	10.30
C9	190.53	269°32'33"	40.50	10.30
C10	19.54	44°48'17"	25.00	10.30
C11	24.23	82°28'07"	15.00	15.65
C12	22.91	87°30'49"	15.00	14.38



W/4-C-C  
 FD. 1/2" BRASS CAP 1182 PER R-2  
 0.3" BELOW GRAVEL ROAD SURFACE. TIES  
 PER FILE 4, PAGE 60 OF SURVEYS  
 FOUND IN S.E. 1/4 S.W. DISTURBED.

BRASS CAP DESTROYED. SET  
 3/8" REBAR # AL. CAP. R.L.S. 7150.  
 ITEM OF PIPE FROM BRASS CAP  
 HIGH BEARS 9.6" FROM SET  
 MON.

3/8" FD. 1/2" BRASS CAP  
 PER R-2, 0.7" BELOW  
 GRAVEL ROAD SURFACE.  
 CAP IS FAULTILY MUTILATED.

FD. 3/8" REBAR # PLASTIC  
 CAP R.L.S. 4428 PER R-2.  
 SET 75" REBAR #  
 AL. CAP, R.L.S. 7150

FD. 3/8" REBAR # PLASTIC  
 CAP R.L.S. 4428 PER R-2.

CENTER 1/4 SECTION 3  
 FD. 1/2" BRASS CAP R.L.S. 1182 AT  
 AL. ROAD SURFACE. THE  
 PER FILE 4, PAGE 60 OF SURVEYS  
 FOUND IN N.W. 1/4 S.W. 1/4  
 FROM SPIKE.

**NOTE:**  
 GOV'T LOT 80 AS SHOWN HEREON IS SUBJECT  
 TO 30' WIDE PATENT EASEMENTS AROUND  
 THE ENTIRE PERIMETER. PER PATENT N°  
 1176927.

- LEGEND:**
- MONUMENTS FOUND AS NOTED.
  - △ SET 3/8" REBAR # AL. CAP R.L.S. 7150 WITH BRASS CAP TIES.
  - CHANGES IN DIRECTION. NOTHING SET.
  - C1 CURVE NUMBER (SEE TABLE).
  - LOT NUMBER.
  - 7 BUILDING SET-BACK LINE.
  - R-1 B.L.M. DEPENDENT RESURVEY AND SUBDIVISION OF SECTIONS  
 PLAT EXECUTED JANUARY 25 TO APRIL 16, 1952.
  - R-2 PARCEL MAP N° 51-06 IN PROGRESS BY RICHARD HAFEN  
 R.L.S. 4428.
  - SET 1/2" BRASS CAP TIE MON. IN TOP OF CONC. CURB.
  - SET 1/2" BRASS CAP TIE MON. IN TOP OF 2' TALL  
 BLOCK WALL.