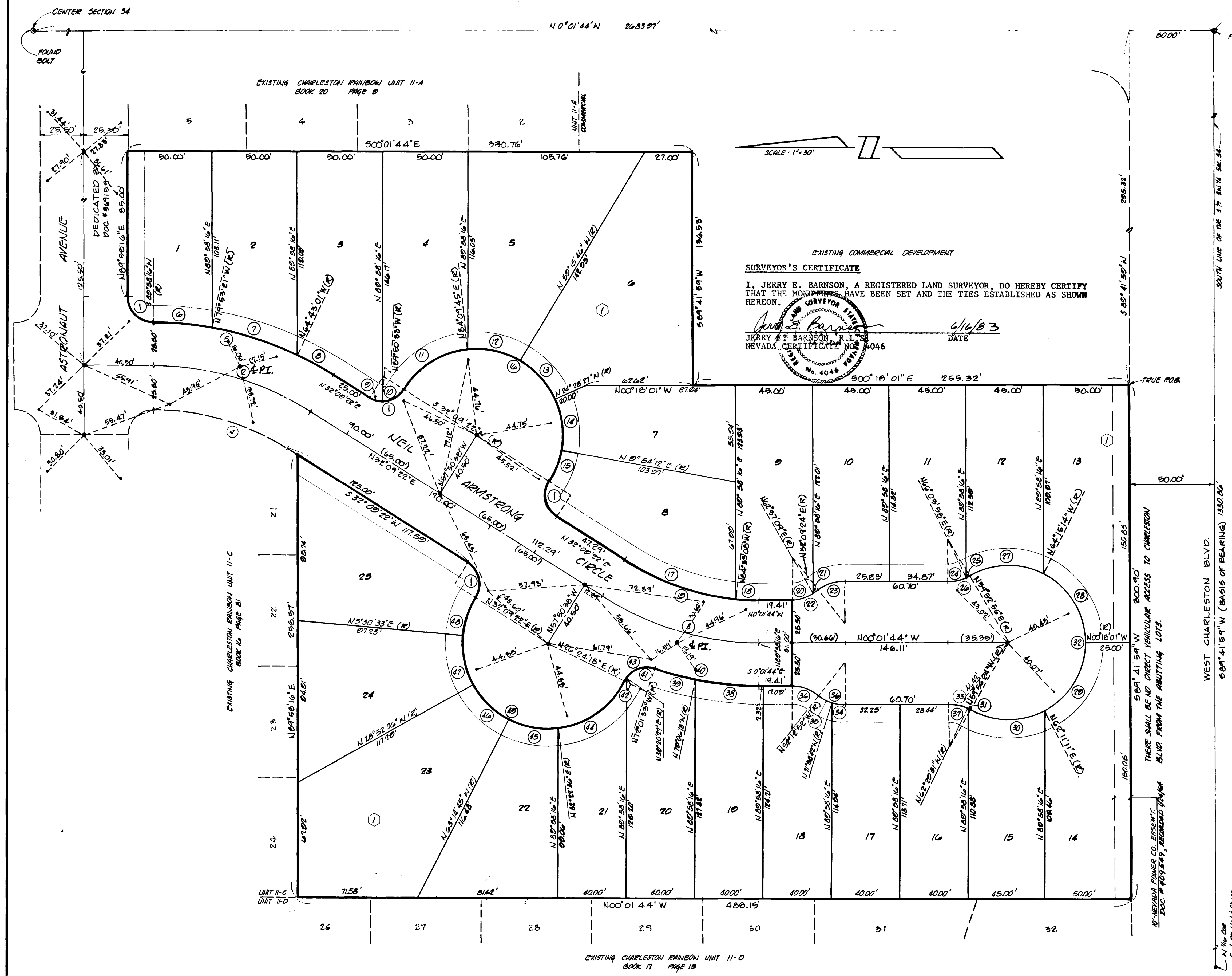


PINECREST MONUMENT TIE MAP

A PORTION OF THE S 1/2 OF THE SW 1/4 OF SECTION 34,
T20S, R60E, M.D.M., CITY OF LAS VEGAS, CLARK COUNTY,
NEVADA



SURVEYOR'S CERTIFICATE
I, JERRY E. BARNSON, A REGISTERED LAND SURVEYOR, DO HEREBY CERTIFY THAT THE MONUMENTS HAVE BEEN SET AND THE TIES ESTABLISHED AS SHOWN HEREON.


 DATE 6/16/03

LEGEND

- 4 LOT NUMBER / TOTAL LOTS - 25
- ⊙ BLOCK NUMBER
- ⊙ CURVE NUMBER
- TRUC POINT OF BEGINNING
- MINIMUM BUILDING SETBACK LINE 10' FRONT, 10' CORNER SIDE
- FOUND POINT AS INDICATED
- FOUND 5/8" REBAR w/ ALUM. CAP RLS N° 4046
- SET 5/8" REBAR w/ ALUM. CAP i/ w/ 1/4" REFERENCES RLS N° 4046
- BRASS CAP IN T.C.

CURVE TABLE

N/A	DELTA	RADIUS	LENGTH	TANGENT
1	50°00'00"	15.00'	23.54'	15.00'
2	32°11'06"	173.31'	87.35'	50.00'
3	32°11'06"	173.31'	87.35'	50.00'
4	32°11'06"	173.31'	87.35'	50.00'
5	32°11'06"	173.31'	87.35'	50.00'
6	10°08'23"	108.81'	35.18'	17.64'
7	15°10'20"	108.81'	52.25'	26.48'
8	6°52'23"	108.81'	23.85'	11.84'
9	31°50'55"	15.00'	8.38'	4.30'
10	58°00'05"	15.00'	15.18'	8.31'
11	52°00'23"	50.00'	45.35'	24.30'
12	36°34'20"	50.00'	31.02'	16.52'
13	34°47'10"	50.00'	30.36'	15.66'
14	34°22'30"	50.00'	30.00'	15.47'
15	22°15'10"	50.00'	19.42'	9.83'
16	180°00'00"	50.00'	157.08'	-
17	26°42'30"	147.81'	68.00'	35.00'
18	5°28'36"	147.81'	14.13'	7.07'
19	32°11'06"	147.81'	83.03'	42.64'
20	27°21'07"	25.00'	11.83'	6.05'
21	10°27'45"	25.00'	4.57'	2.20'
22	27°48'52"	25.00'	16.50'	8.56'
23	27°48'52"	25.00'	16.50'	8.56'
24	23°54'18"	25.00'	10.43'	5.20'
25	6°11'02"	25.00'	2.70'	1.35'
26	30°29'20"	25.00'	13.13'	6.72'
27	55°51'50"	45.50'	44.36'	24.12'
28	63°57'13"	45.50'	50.70'	28.41'
29	62°20'12"	45.50'	49.62'	27.60'
30	57°22'25"	45.50'	46.00'	25.16'
31	2°33'27"	25.00'	1.12'	0.56'
32	240°10'40"	45.50'	180.73'	-
33	30°28'20"	25.00'	13.13'	6.72'
34	18°23'02"	25.00'	7.88'	3.97'
35	10°45'50"	25.00'	8.62'	4.36'
36	37°48'52"	25.00'	16.50'	8.56'
37	27°31'53"	25.00'	12.01'	6.12'
38	10°55'31"	198.81'	37.01'	19.01'
39	17°04'40"	198.81'	24.56'	12.30'
40	18°00'11"	198.81'	62.47'	31.48'
41	68°35'00"	15.00'	17.87'	10.24'
42	12°26'00"	15.00'	3.39'	1.70'
43	51°34'08"	15.00'	21.35'	12.04'
44	55°58'18"	50.00'	48.64'	26.57'
45	34°22'30"	50.00'	30.00'	15.47'
46	34°22'30"	50.00'	30.00'	15.47'
47	26°38'40"	50.00'	23.25'	11.84'
48	185°45'04"	50.00'	162.10'	-
49	120°00'00"	12.00'	25.13'	20.78'
50	120°00'00"	1.00'	2.10'	1.73'

2794

