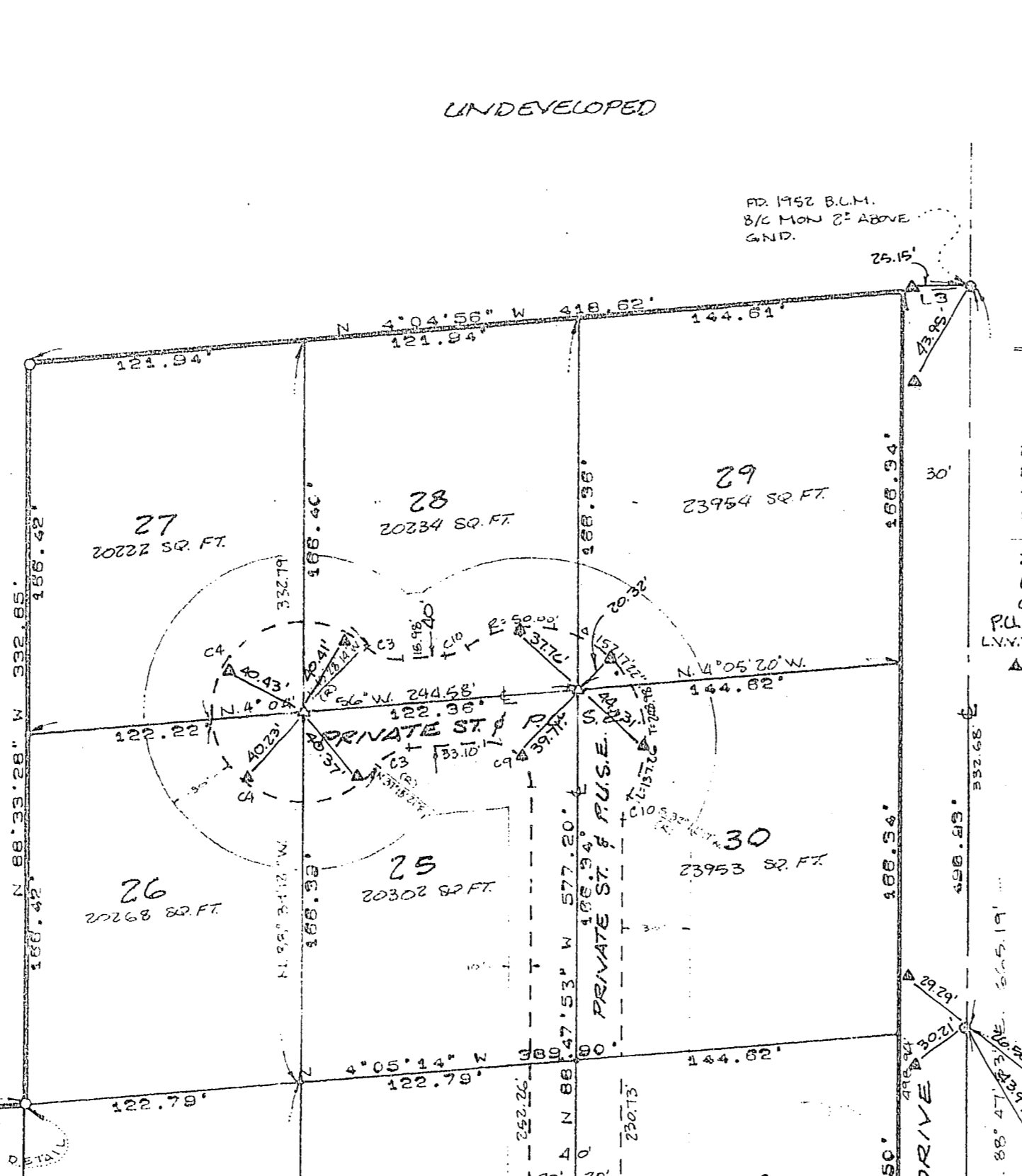
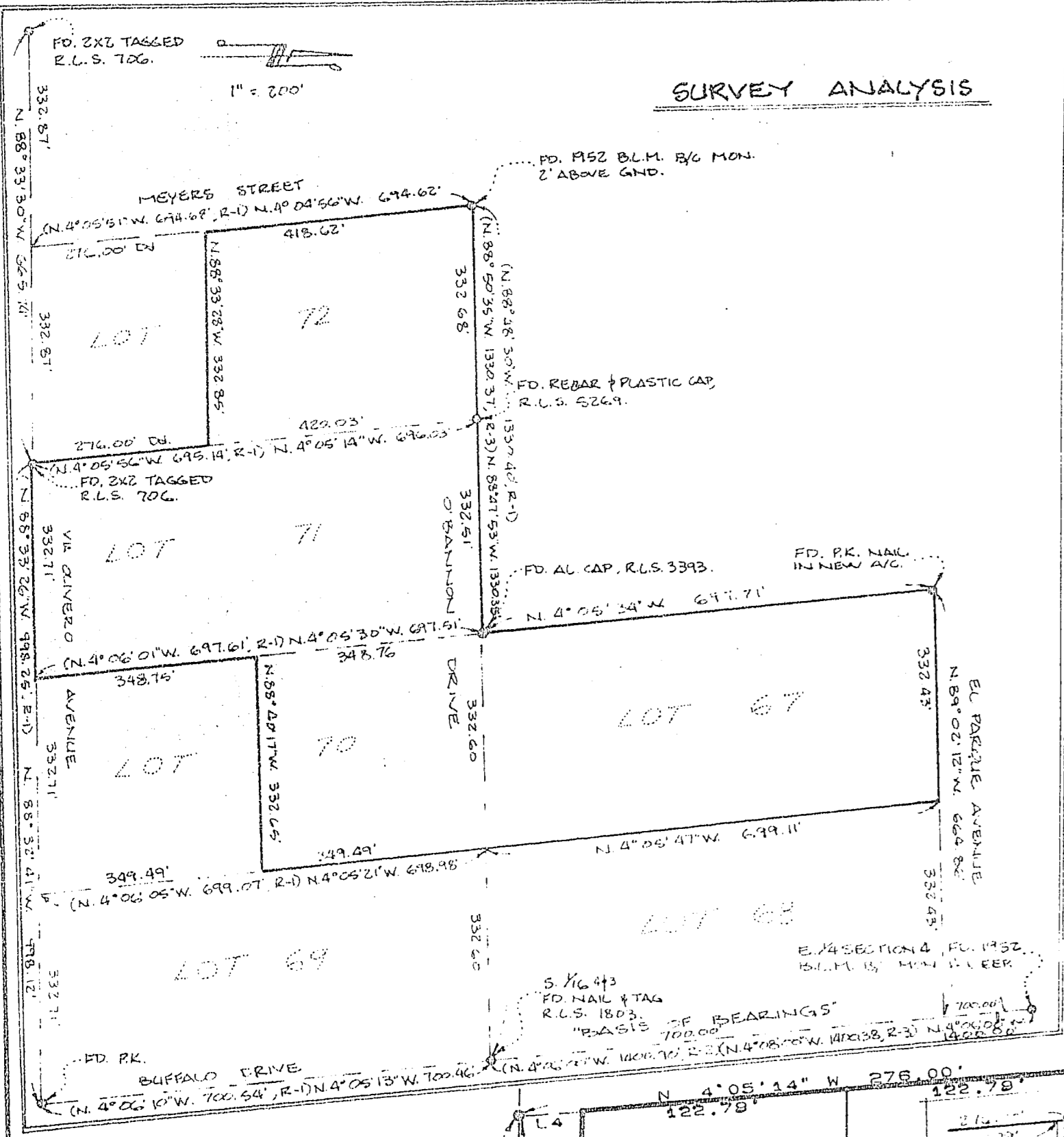


MONUMENTATION PLAN

PALISADES ESTATES

A PORTION OF THE EAST 1/2 OF THE S.E. 1/4 OF SECTION 4 T. 21 S., R. 60 E., M.D.B. & M., CITY OF LAS VEGAS, CLARK COUNTY, NEVADA



- LEGEND:**
- 0 MONUMENTS FOUND AS NOTED.
 - Δ SET 5/8" REBAR # AL. CAP R.L.S. 7190 WITH BRASS CAP TIES.
 - SET 5/8" REBAR # PLASTIC CAP R.L.S. 7190
 - R-1 PARCEL MAP FILE 50, PAGE 24.
 - R-2 PARCEL MAP FILE 47, PAGE 19.
 - R-3 RECORD OF SURVEY FILE 23, PAGE 50.
 - DJ DEC. # 00218, RECORDED OCT. 8, 1986.
 - BUILDING SET BACK LINE.
 - L-1 TYPICAL LOT NUMBER.
 - L-2 LINE DATA (SEE TABLE).
 - C-1 CURVE DATA (SEE TABLE).
 - P.U.S.E. PUBLIC UTILITY & SEWER EASEMENT (N.V.M.D. LAS VEGAS VALLEY WATER DISTRICT)
 - ▲ SET BRASS CAP TIE MON IN TOP CURB RM, R.L.S. 7190

CURVE TABLE:

CURVE	ARC	DELTA	RADIUS	TAN LENGTH
C1	45.90	11° 21' 57"	250.00	27.00
C2	49.90	11° 21' 57"	250.00	27.00
C3	16.97	48° 36' 43"	20.00	9.03
C4	97.98	128° 36' 43"	40.50	107.21

LINE TABLE:

LINE	BEARING	DISTANCE
L1	N 88° 40' 17" W	30.13
L2	N 4° 05' 41" W	30.13
L3	N 4° 05' 36" W	30.13
L4	N 4° 05' 14" W	30.13
L5	N 4° 05' 32" W	30.13
L6	N 4° 05' 30" W	30.13
L7	N 4° 05' 30" W	30.13
L8	N 4° 05' 34" W	30.13
L9	N 4° 05' 34" W	30.13
L10	N 4° 05' 41" W	30.13
L11	N 4° 05' 21" W	30.13
L12	N 4° 05' 47" W	30.13
L13	N 4° 05' 47" W	30.13
L14	N 4° 05' 30" W	30.13
L15	N 88° 47' 53" W	33.76
L16	N 88° 47' 53" W	33.76
L17	N 88° 47' 53" W	33.76
L18	N 88° 47' 53" W	33.76
L19	N 88° 47' 53" W	110.67
L20	N 88° 47' 53" W	110.67
L21	N 88° 47' 53" W	110.67

BASIS OF BEARINGS:

THAT PORTION OF THE EAST LINE OF SECTION 4, T. 21 S., R. 60 E., M.D.B. & M., BETWEEN THE E. 1/4 CORNER & THE S. 1/4 CORNER, AND NOTED AS N. 4° 05' 00" WEST ON PARCEL MAP FILE 47, PAGE 19.

CURVE TABLE (CONTINUED):

CURVE	ARC	DELTA	RADIUS	TAN LENGTH
C5	23.18	84° 42' 31"	15.00	18.07
C6	24.95	85° 17' 24"	15.00	18.07
C7	47.84	11° 25' 57"	240.00	24.00
C8	39.91	11° 25' 57"	200.00	20.00
C9	35.26	45° 17' 24"	20.00	21.41
C10	102.82	31° 00' 10"	30.00	5.58
C11	29.57	84° 42' 31"	20.00	18.23

UNDEVELOPED

I, JOHN R. RINALDI JR., A DULY REGISTERED LAND SURVEYOR IN THE STATE OF NEVADA, DO HEREBY CERTIFY THAT THE MONUMENTS HAVE BEEN SET AND THE TIE DISTANCES ESTABLISHED AS SHOWN HEREON, AND WAS COMPLETED ON SEPTEMBER 29, 1988.

John Rinaldi Jr.
 11-1-88

