

PAINTED DESERT PARCEL 6

A PORTION OF THE S. 1/2 OF THE N. 1/2 OF SECTION 34, T. 19 S., R. 60 E., M.D.M.

MONUMENT TIE MAP



NOTES

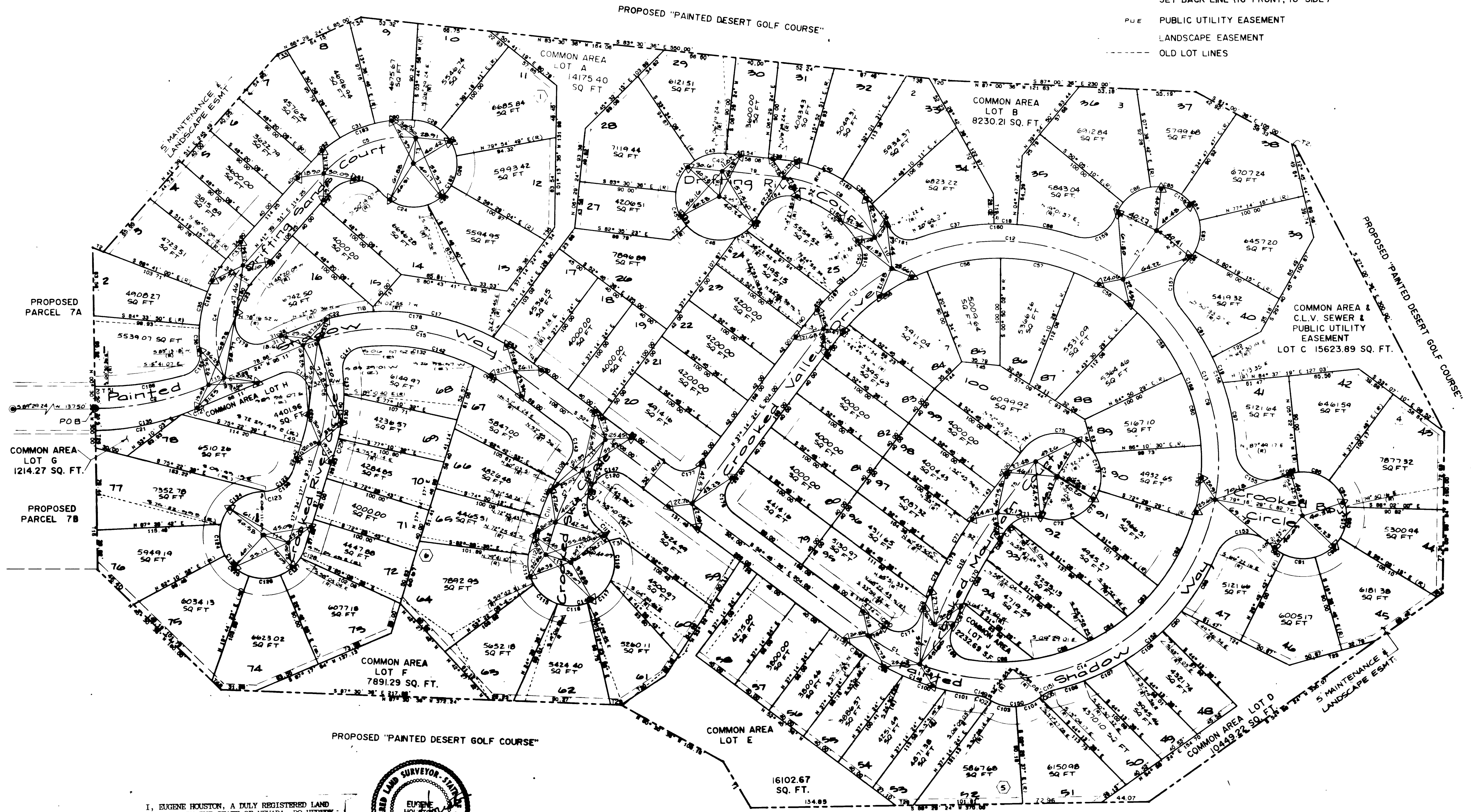
ALL COMMON AREAS, DENOTED PER THIS PLAT AS COMMON AREA - LOTS "A" THRU "J" ARE TO SERVE AS UTILITY EASEMENTS.

ALL STREETS SHOWN PER THIS PLAT ARE TO BE PRIVATE, WITH THE RIGHT-OF-WAY BEING DEDICATED TO THE CITY OF LAS VEGAS AS A SEWER & PUBLIC UTILITY EASEMENT.

BASIS OF BEARING

THE SOUTH LINE OF THE SE. 1/4 OF THE NW. 1/4 OF SECTION 33, T. 19 S., R. 60 E., M.D.M., WHICH BEARS S. 88° 59' 47" E., AS SHOWN BY A MAP IN THE OFFICE OF THE CLARK COUNTY NEVADA RECORDER IN BOOK 35 OF PLATS ON PAGE 53

- ▲ SET 2" BC. IN.T.C. STAMPED R.M. (DIST. NOTED)
- FND. 5/8" REBAR W/ALUM. CAP, RLS 2050
- SET 5/8" REBAR W/ALUM. CAP, RLS 6305
- C1 CURVE NUMBER
- T1 LINE NUMBER
- 25 LOT NUMBER
- 2 BLOCK NUMBER
- SET BACK LINE (16' FRONT, 10' SIDE)
- PUE PUBLIC UTILITY EASEMENT
- LANDSCAPE EASEMENT
- OLD LOT LINES



I, EUGENE HOUSTON, A DULY REGISTERED LAND SURVEYOR IN THE STATE OF NEVADA, DO HEREBY CERTIFY THAT THE MONUMENTS HAVE BEEN SEEN AND THE TIES ESTABLISHED AS SHOWN HEREIN.
Eugene Houston
EUGENE HOUSTON, R.L.S. 8186



4/21/89

PAINTED DESERT PARCEL 6

A PORTION OF THE S. 1/4 OF THE N. 1/4 OF SECTION 34, T. 9 S., R. 90 E., M34E

MENTAL IS MAP

NOTES

1. THIS MAP IS A REPRODUCTION OF THE ORIGINAL MAP AS FILED IN THE PUBLIC RECORDS OF THE COUNTY OF MARICOPA, ARIZONA.

2. ALL DIMENSIONS ARE IN FEET AND DECIMALS THEREOF.

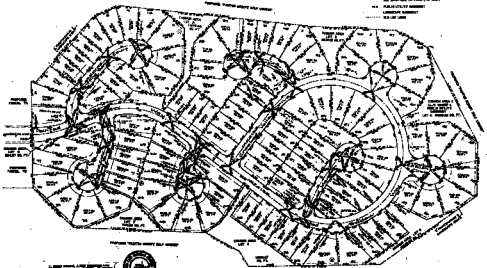
3. THE AREA OF THIS PARCEL IS 1.0000 ACRES.

BASE OF GRADE

1. THE ELEVATION OF THE SURFACE OF THE GROUND AT THE CORNERS OF THIS PARCEL IS AS FOLLOWS:

2. THE ELEVATION OF THE SURFACE OF THE GROUND AT THE CENTER OF THIS PARCEL IS AS FOLLOWS:

- 1. 1/4" OF AN INCH EQUALS 100 FEET
- 2. ALL DIMENSIONS ARE IN FEET
- 3. ALL DIMENSIONS ARE IN FEET
- 4. ALL DIMENSIONS ARE IN FEET
- 5. ALL DIMENSIONS ARE IN FEET
- 6. ALL DIMENSIONS ARE IN FEET
- 7. ALL DIMENSIONS ARE IN FEET
- 8. ALL DIMENSIONS ARE IN FEET
- 9. ALL DIMENSIONS ARE IN FEET
- 10. ALL DIMENSIONS ARE IN FEET
- 11. ALL DIMENSIONS ARE IN FEET
- 12. ALL DIMENSIONS ARE IN FEET
- 13. ALL DIMENSIONS ARE IN FEET
- 14. ALL DIMENSIONS ARE IN FEET
- 15. ALL DIMENSIONS ARE IN FEET
- 16. ALL DIMENSIONS ARE IN FEET
- 17. ALL DIMENSIONS ARE IN FEET
- 18. ALL DIMENSIONS ARE IN FEET
- 19. ALL DIMENSIONS ARE IN FEET
- 20. ALL DIMENSIONS ARE IN FEET



PAINTED DESERT
 A PORTION OF THE S. 1/4 OF THE N. 1/4 OF SECTION 34, T. 9 S., R. 90 E., M34E



PLAT 1 OF 1