

LINE	BEARING	DISTANCE	LINE	BEARING	DISTANCE
L1	S 00°30'29" W	55.05'	L28	N 89°15'58" E	13.23'
L2	N 00°30'22" E	45.00'	L29	N 84°52'41" E	13.34'
L3	N 89°29'37" W	100.00'	L30	S 87°29'31" E	21.17'
L4	S 80°36'39" E	37.00'	L31	N 89°29'31" W	20.00'
L5	N 46°12'54" E	72.54'	L32	N 00°21'49" W	14.85'
L6	N 00°05'35" E	50.45'	L33	S 89°38'11" W	15.00'
L7	N 89°38'11" E	84.48'	L34	S 70°00'00" W	15.00'
L8	S 43°47'06" E	14.69'	L35	N 89°54'25" W	17.67'
L9	N 89°15'58" E	86.48'	L36	N 46°12'54" E	5.28'
L10	N 39°56'16" E	50.30'	L37	N 46°12'54" E	6.02'
L11	N 46°12'54" E	22.17'	L38	N 00°05'35" E	5.59'
L12	S 89°15'58" W	46.73'	L39	N 70°00'00" E	7.57'
L13	S 89°38'11" W	94.41'	L40	N 70°00'00" E	15.00'
L14	S 89°38'11" W	84.48'	L41	N 70°00'00" E	9.40'
L15	S 00°05'35" W	50.45'	L42	N 89°38'11" E	14.74'
L16	S 52°29'32" W	50.30'	L43	N 84°52'41" E	16.83'
L17	N 86°20'04" E	85.33'	L44	S 89°04'15" E	12.92'
L18	N 89°15'58" E	87.22'	L45	S 89°04'15" E	2.47'
L19	S 89°38'11" W	95.00'	L46	S 84°52'41" W	12.79'
L20	S 46°12'54" W	29.34'	L47	S 89°15'58" W	15.72'
L21	N 00°21'49" W	19.98'	L48	S 86°20'04" W	24.15'
L22	N 50°57'39" E	26.25'	L49	S 86°20'04" W	8.82'
L23	N 70°00'00" E	37.37'	L50	S 46°12'54" W	13.81'
L24	N 70°00'00" E	56.37'	L51	S 46°12'54" W	10.37'
L25	S 06°45'38" E	29.34'	L52	S 47°28'01" W	5.51'
L26	S 85°23'13" E	6.36'	L53	S 89°38'11" W	14.48'
L27	N 86°20'04" E	21.44'	L54	S 70°00'00" W	1.75'
			L55	S 89°15'58" E	9.74'
			L56	S 89°38'11" W	9.74'
			L57	S 89°29'38" E	5.00'

### MONUMENTATION CERTIFICATE

I, JAMES A. DALE, A DULY REGISTERED PROFESSIONAL LAND SURVEYOR IN THE STATE OF NEVADA, DO HEREBY CERTIFY THAT THE MONUMENTS HAVE BEEN SET AND THE TIE DISTANCES ESTABLISHED AS SHOWN HEREON. THIS SURVEY WAS COMPLETED ON NOVEMBER 14, 1991.

JAMES A. DALE  
PROFESSIONAL LAND SURVEYOR  
NEVADA CERTIFICATE NO. 7740

*James A. Dale*  
11-19-1991

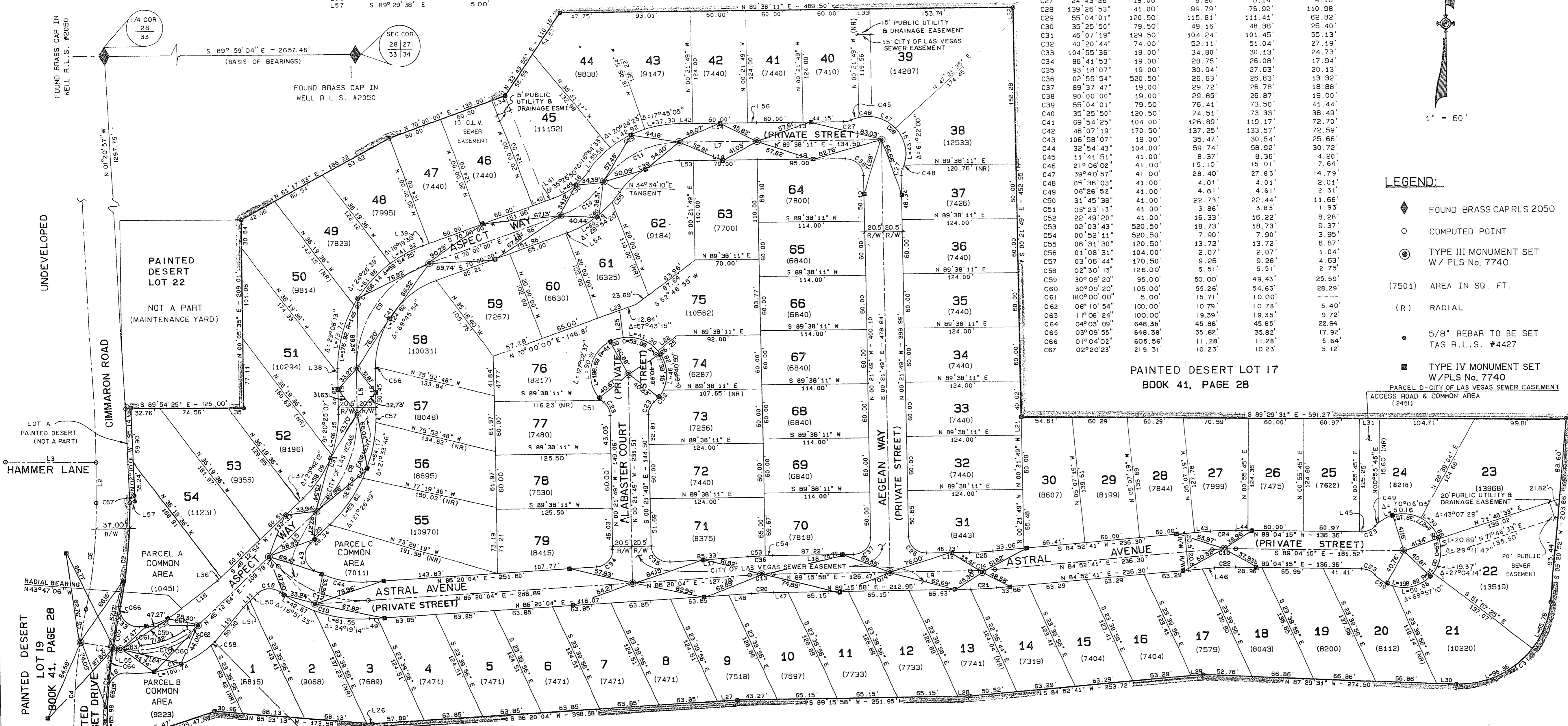
PAINTED DESERT LOT 16  
PHASE A  
BOOK 41, PAGE 28

CURVE	DELTA	RADIUS	LENGTH	CHORD	TANGENT
C1	13°02'54"	648.38'	147.66'	147.34'	74.15'
C2	15°02'54"	605.56'	127.34'	127.10'	63.91'
C3	87°09'37"	100.00'	158.13'	137.87'	95.15'
C4	09°52'59"	685.38'	119.22'	118.07'	59.26'
C5	03°09'55"	685.38'	37.86'	37.86'	18.94'
C6	12°02'54"	568.56'	119.56'	119.34'	60.00'
C7	35°23'29"	100.00'	62.63'	61.61'	31.36'
C8	45°07'18"	150.00'	129.75'	117.81'	63.88'
C9	69°54'25"	124.50'	151.90'	142.65'	87.03'
C10	35°25'50"	100.00'	61.84'	60.86'	31.94'
C11	55°04'01"	100.00'	96.11'	92.45'	52.13'
C12	48°52'50"	124.50'	108.38'	105.00'	57.90'
C13	02°55'54"	500.00'	25.58'	25.58'	12.79'
C14	04°23'17"	350.00'	26.81'	26.80'	13.41'
C15	06°03'04"	240.00'	25.35'	25.34'	12.69'
C16	89°11'24"	19.00'	29.58'	26.68'	18.73'
C17	48°18'41"	125.00'	106.20'	103.12'	56.51'
C18	81°17'59"	19.00'	26.96'	24.75'	15.31'
C19	41°10'49"	145.00'	104.22'	101.99'	54.47'
C20	02°55'54"	479.50'	24.53'	24.53'	12.27'
C21	04°23'17"	370.50'	28.38'	28.37'	14.19'
C22	05°03'04"	219.50'	23.18'	23.17'	11.60'
C23	48°49'38"	19.00'	16.19'	15.71'	8.62'
C24	06°03'04"	260.50'	27.51'	27.50'	13.77'
C25	04°23'17"	329.50'	25.24'	25.23'	12.62'
C26	90°22'13"	19.00'	29.57'	26.96'	19.12'
C27	24°43'26"	19.00'	8.20'	8.14'	4.16'
C28	139°26'53"	41.00'	99.79'	76.92'	110.98'
C29	55°04'01"	120.50'	115.81'	111.41'	62.82'
C30	35°25'50"	79.50'	79.50'	49.16'	48.38'
C31	46°07'18"	129.50'	104.24'	101.45'	55.13'
C32	05°03'04"	219.50'	23.18'	23.17'	11.60'
C33	104°55'36"	19.00'	34.80'	30.13'	24.73'
C34	86°41'53"	19.00'	28.75'	26.08'	17.94'
C35	93°18'07"	19.00'	30.94'	27.63'	20.13'
C36	02°55'54"	520.50'	26.63'	26.63'	13.32'
C37	89°37'47"	19.00'	29.72'	26.78'	18.88'
C38	90°00'00"	19.00'	29.85'	26.87'	19.00'
C39	55°04'01"	79.50'	76.41'	73.50'	41.44'
C40	35°25'50"	120.50'	74.51'	73.33'	38.48'
C41	59°54'25"	104.00'	125.89'	119.17'	72.70'
C42	46°07'18"	179.50'	137.25'	133.57'	72.58'
C43	106°58'07"	19.00'	35.47'	30.54'	25.66'
C44	32°54'43"	104.00'	59.74'	58.92'	30.72'
C45	11°41'51"	41.00'	8.37'	8.36'	4.20'
C46	21°06'02"	41.00'	15.10'	15.01'	7.64'
C47	39°40'57"	41.00'	28.40'	27.83'	14.79'
C48	04°36'03"	41.00'	4.01'	4.01'	2.01'
C49	06°26'52"	41.00'	4.61'	4.61'	2.31'
C50	31°45'38"	41.00'	22.73'	22.44'	11.66'
C51	05°23'13"	41.00'	3.86'	3.86'	1.93'
C52	39°48'20"	41.00'	16.33'	16.22'	8.28'
C53	02°03'43"	520.50'	18.73'	18.73'	9.37'
C54	00°52'11"	520.50'	7.90'	7.90'	3.95'
C55	06°31'30"	120.50'	13.72'	13.72'	6.87'
C56	01°08'31"	104.00'	2.07'	2.07'	1.04'
C57	03°06'44"	170.50'	9.26'	9.26'	4.63'
C58	02°30'13"	126.00'	5.51'	5.51'	2.75'
C59	30°09'20"	95.00'	50.00'	49.43'	25.59'
C60	30°09'20"	105.00'	55.26'	54.63'	28.29'
C61	180°00'00"	5.00'	15.71'	10.00'	0.00'
C62	06°10'54"	100.00'	10.79'	10.79'	5.40'
C63	1°06'24"	100.00'	19.39'	19.35'	9.72'
C64	04°03'09"	648.38'	45.86'	45.85'	22.94'
C65	03°09'55"	648.38'	35.82'	35.82'	17.92'
C66	01°04'02"	605.56'	11.28'	11.28'	5.64'
C67	02°20'29"	219.51'	10.23'	10.23'	5.12'



#### LEGEND:

- ◆ FOUND BRASS CAP PLS 2050
- COMPUTED POINT
- ⊙ TYPE III MONUMENT SET W/ PLS No. 7740
- (7501) AREA IN SQ. FT.
- (R) RADIAL
- 5/8" REBAR TO BE SET TAG R.L.S. #4427
- TYPE IV MONUMENT SET W/ PLS No. 7740



PAINTED DESERT GOLF COURSE  
HOLE NO.3  
BOOK 41, PAGE 28

TIE MAP OF <b>PAINTED DESERT PARCEL 16 PHASE B</b> (A PLANNED RESIDENTIAL DEVELOPMENT)		NO. <u>00592</u> Filed at the request of <u>SUMMIT ENGINEERING CORP.</u>
SITUATED IN THE NORTH HALF (N 1/2) OF SECTION 33, TOWNSHIP 19 SOUTH, RANGE 60 EAST, M.D.M. LAS VEGAS, CLARK COUNTY, NEVADA		Date <u>5-03-89</u> At <u>15:19</u> Book <u>42</u> Page <u>50</u> of Plats Official Records Book <u>892503</u> Clark County, Nevada Records Joan L. Swift, Recorder
<b>SUMMIT ENGINEERING CORPORATION</b> CONSULTING ENGINEERS AND SURVEYORS 12540 HEND AVENUE, SUITE 204 LAS VEGAS, NEVADA 89138	SHEET <u>2</u> OF <u>2</u>	Fee: <u>89.50</u> Deputy <u>CJK</u>