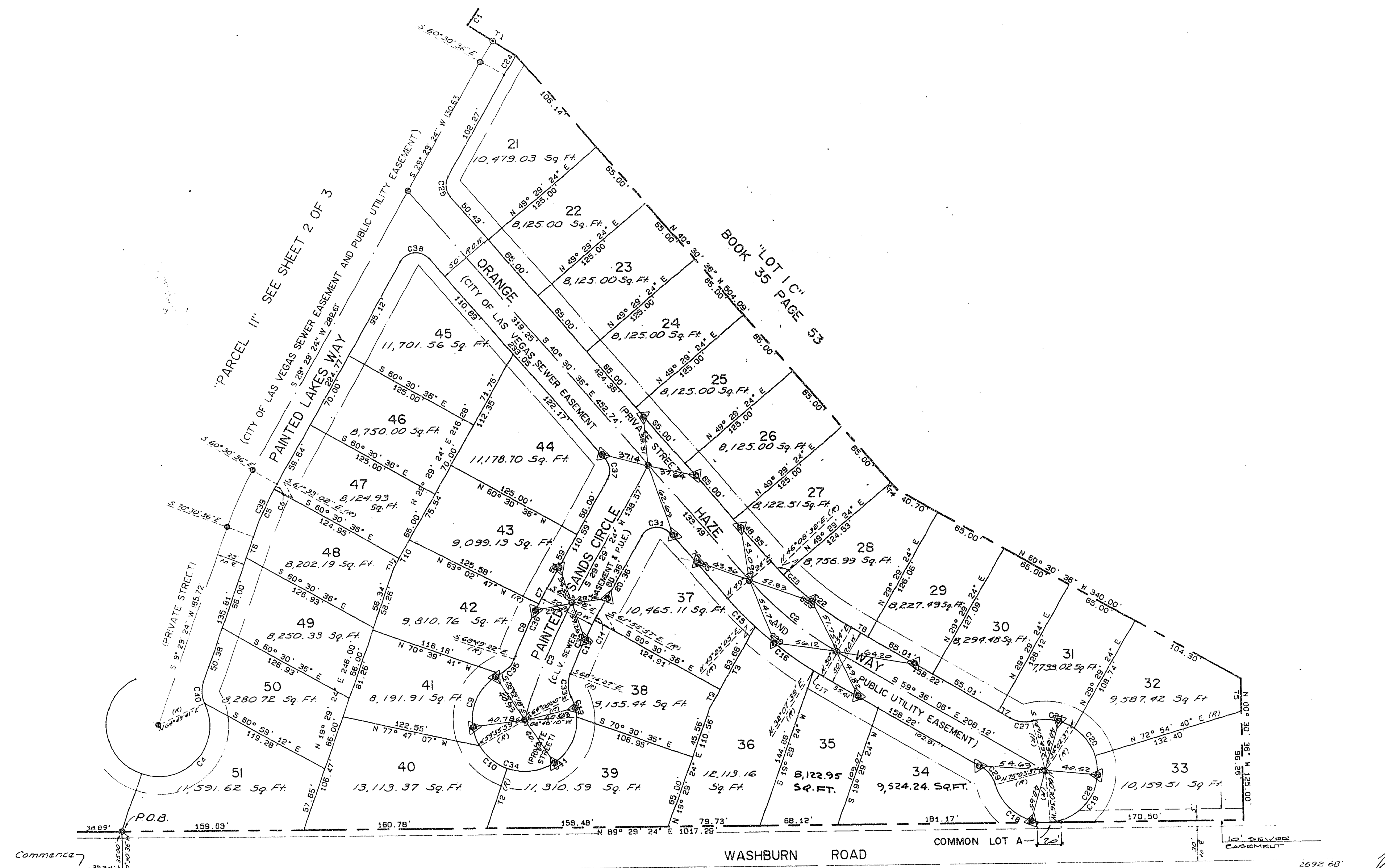


PAINTED DESERT PARCELS 10 & 11

A PORTION OF THE (NE. 1/4) OF SEC. 33 AND A PORTION OF THE (NW. 1/4) OF SEC. 34, T. 19 S., R. 60 E., M.D.M.
ALSO BEING LOTS 10 & 11, AS SHOWN IN FILE 35 OF PLATS ON PAGE 53 CLARK COUNTY, NEV. RECORDS

MONUMENT TIE MAP



LEGEND

- ▲ SET 2" B.C. IN T.C. STAMPED R.M. (DIST. NOTED)
- ▲ FND. AS INDICATED
- ⊙ FND. 5/8" REBAR W/ALUM. CAP RLS 2050
- SET 5/8" REBAR W/ALUM. CAP RLS 6305
- SET BACK LINE (16' FRONT, 10' SIDE, 20' MIN. AT THE GARAGE DOOR OPENING)
- CI CURVE NUMBER
- TI LINE NUMBER
- 24 LOT NUMBER
- ⓪ BLOCK NUMBER
- C.L.V. CITY OF LAS VEGAS
- P.U.E. PUBLIC UTILITY EASEMENT

CURVE DATA TABLE

LABEL	RADIUS	CENTRAL ANGLE	ARC LENGTH	TAN. LENGTH
C1	370.00	02° 38' 32"	17.06	8.53
C2	300.00	19° 05' 30"	99.96	50.45
C3	500.00	12° 54' 35"	112.66	56.57
C4	45.50	134° 39' 43"	106.94	108.94
C5	295.00	08° 57' 35"	46.13	23.11
C6	295.00	01° 02' 25"	3.36	2.89
C7	525.00	01° 40' 50"	15.40	7.70
C8	525.00	05° 45' 35"	52.93	26.49
C9	45.50	89° 58' 43"	74.05	48.15
C10	45.50	40° 28' 35"	32.12	16.76
C11	45.50	112° 43' 14"	89.51	88.38
C12	45.50	25° 46' 11"	18.08	9.16
C13	475.00	06° 18' 29"	32.30	16.17
C14	475.00	00° 34' 01"	4.70	2.35
C15	325.00	06° 06' 18"	34.63	17.33
C16	325.00	11° 15' 28"	63.85	32.03
C17	325.00	01° 43' 45"	9.81	4.90
C18	45.50	75° 34' 12"	60.01	35.27
C19	45.50	106° 34' 44"	84.84	81.02
C20	45.50	38° 52' 04"	30.87	16.05

CURVE DATA TABLE

LABEL	RADIUS	CENTRAL ANGLE	ARC LENGTH	TAN. LENGTH
C21	45.50	48° 18' 26"	38.36	20.40
C22	275.00	15° 44' 44"	75.57	38.03
C23	275.00	03° 20' 45"	15.06	8.03
C24	320.00	03° 31' 30"	19.69	9.85
C25	15.50	70° 00' 00"	18.84	10.85
C26	275.00	19° 05' 30"	51.63	26.25
C27	25.50	44° 39' 43"	19.88	10.47
C28	45.50	269° 19' 25"	213.88	--
C29	25.50	44° 39' 43"	19.88	10.47
C30	325.00	19° 05' 30"	108.29	54.65
C31	15.50	110° 00' 00"	29.76	22.14
C32	475.00	06° 52' 35"	57.00	28.53
C33	25.50	47° 45' 34"	21.26	11.29
C34	45.50	288° 00' 43"	213.79	--
C35	25.50	48° 00' 04"	18.69	9.79
C36	255.00	07° 27' 28"	68.33	34.21
C37	15.50	70° 00' 00"	18.84	10.85
C38	15.50	110° 00' 00"	29.76	22.14
C39	255.00	10° 00' 00"	51.49	25.81
C40	25.50	44° 39' 43"	19.88	10.47

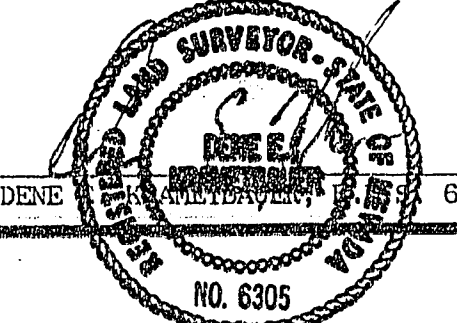
LINE DATA TABLE

LABEL	BEARING	DISTANCE
T1	N 56° 59' 06" W	50.00
T2	S 19° 29' 24" E	56.13
T3	N 29° 29' 24" E	82.80
T4	S 40° 30' 36" E	7.95
T5	S 00° 30' 36" E	28.74
T6	N 19° 29' 24" E	19.43
T7	N 59° 36' 06" W	11.88
T8	N 59° 36' 06" W	16.32
T9	S 29° 29' 24" W	19.14
T10	N 29° 29' 24" E	28.39
T11	S 29° 29' 24" W	9.52

BASIS OF BEARING

THE BASIS OF BEARING FOR THIS SURVEY IS THE SOUTH LINE OF THE SE 1/4 OF THE NW 1/4 OF SECTION 33, T. 19S., R. 60 E., M.D.M. WHICH BEARS SOUTH 88° 59' 47" EAST AS SHOWN BY MAP IN THE OFFICE OF THE CLARK COUNTY, NEVADA RECORDER IN BOOK 35 OF PLATS ON PAGE 53.

I, DENE E. KRAMTBBAUER, A DULY REGISTERED LAND SURVEYOR IN THE STATE OF NEVADA, DO HEREBY CERTIFY THAT THE MONUMENTS HAVE BEEN SET AND THE TIES ESTABLISHED AS SHOWN HERON.



4/12/05