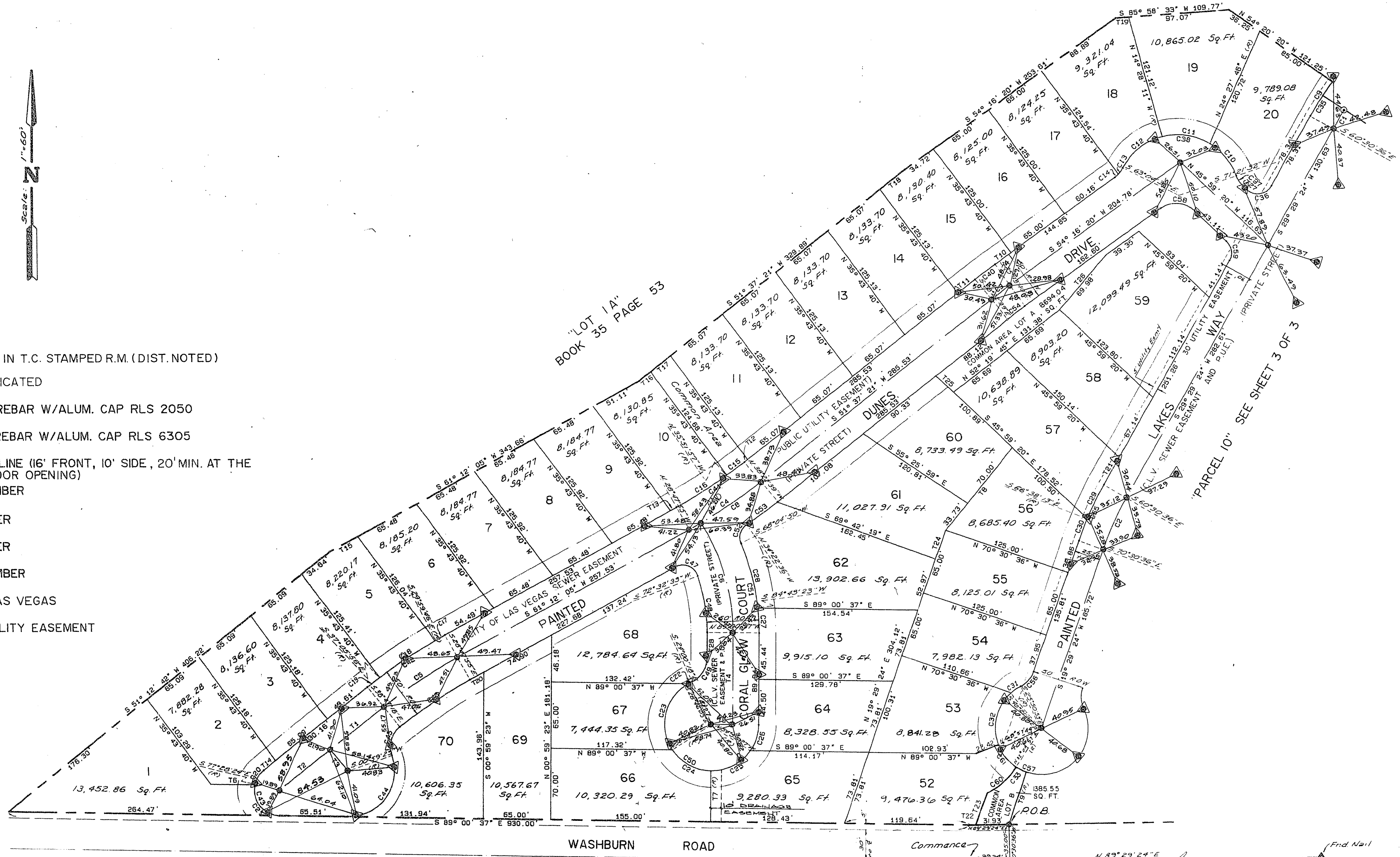


# PAINTED DESERT PARCELS 10 & 11

A PORTION OF THE (NE. 1/4) OF SEC. 33 AND A PORTION OF THE (NW. 1/4) OF SEC. 34, T. 19 S., R. 60 E., M.D.M.  
 ALSO BEING LOTS 10 & 11, AS SHOWN IN FILE 35 OF PLATS ON PAGE 53 CLARK COUNTY, NEV. RECORDS  
 MONUMENT TIE MAP



### LEGEND

- ▲ SET 2" B.C. IN T.C. STAMPED R.M. (DIST. NOTED)
- ▲ FND. AS INDICATED
- ⊙ FND. 5/8" REBAR W/ALUM. CAP RLS 2050
- SET 5/8" REBAR W/ALUM. CAP RLS 6305
- SET BACK LINE (16' FRONT, 10' SIDE, 20' MIN. AT THE GARAGE DOOR OPENING)
- CI CURVE NUMBER
- T1 LINE NUMBER
- G2 LOT NUMBER
- ④ BLOCK NUMBER
- C.L.V. CITY OF LAS VEGAS
- P.U.E. PUBLIC UTILITY EASEMENT

CURVE DATA TABLE

LABEL	RADIUS	CENTRAL ANGLE	ARC LENGTH	TAN. LENGTH
C1	345.00	03° 31' 30"	21.23	19.89
C2	320.00	10° 00' 00"	55.85	28.00
C3	500.00	02° 38' 59"	29.12	11.56
C4	500.00	03° 34' 44"	33.53	14.68
C5	500.00	05° 59' 23"	37.18	16.37
C6	200.00	32° 27' 31"	113.31	56.22
C7	500.00	01° 33' 27"	13.53	6.80
C8	500.00	08° 01' 17"	70.09	35.06
C9	370.00	06° 10' 02"	39.83	19.83
C10	59.50	39° 48' 24"	11.31	21.52
C11	59.50	48° 03' 08"	17.82	29.29
C12	59.50	48° 38' 21"	18.48	28.87
C13	25.50	18° 24' 20"	7.30	3.88
C14	25.50	10° 58' 32"	4.87	2.44
C15	475.00	02° 30' 42"	20.82	10.41
C16	475.00	07° 04' 02"	26.59	13.33
C17	525.00	01° 11' 51"	10.67	5.49
C18	525.00	07° 08' 12"	25.09	12.52
C19	525.00	01° 41' 20"	10.47	7.74
C20	525.00	08° 41' 09"	19.88	10.78
C21	25.00	101° 32' 13"	44.30	30.52
C22	45.50	04° 45' 47"	3.78	1.89
C23	45.50	04° 19' 43"	3.78	1.89
C24	45.50	05° 54' 50"	44.40	24.15
C25	45.50	05° 54' 50"	44.40	24.15
C26	45.50	04° 05' 10"	37.07	13.55
C27	225.00	06° 18' 00"	24.61	12.32
C28	325.00	16° 38' 35"	65.38	32.91
C29	345.00	08° 07' 37"	28.69	19.46
C30	345.00	03° 52' 23"	23.32	11.87

CURVE DATA TABLE

LABEL	RADIUS	CENTRAL ANGLE	ARC LENGTH	TAN. LENGTH
C31	45.50	14° 30' 07"	11.52	5.79
C32	45.50	70° 21' 18"	55.13	32.27
C33	45.50	12° 32' 33"	10.00	5.02
C34	570.00	03° 31' 20"	22.75	11.39
C35	15.50	104° 31' 18"	28.28	20.03
C36	25.50	27° 20' 52"	12.17	6.20
C37	59.50	134° 28' 03"	139.61	141.89
C38	25.50	27° 20' 52"	12.17	6.20
C39	525.00	02° 38' 59"	24.29	12.14
C40	475.00	08° 34' 44"	79.41	39.80
C41	325.00	08° 34' 44"	61.04	45.88
C42	25.50	140° 13' 19"	61.18	69.10
C43	45.50	109° 43' 49"	67.14	84.89
C44	25.50	69° 07' 07"	13.13	6.84
C45	475.00	08° 38' 23"	82.82	41.51
C46	15.50	101° 20' 28"	27.42	19.92
C47	475.00	08° 38' 23"	82.82	41.51
C48	175.00	18° 20' 50"	30.34	15.17
C49	55.50	69° 00' 19"	28.83	16.25
C50	45.50	245° 00' 19"	194.88	45.89
C51	225.00	28° 33' 33"	45.08	22.54
C52	15.50	77° 32' 34"	20.98	12.45
C53	225.00	04° 00' 03"	38.88	19.34
C54	475.00	12° 32' 33"	21.97	10.99
C55	345.00	10° 00' 00"	80.21	30.18
C56	25.50	144° 59' 43"	19.88	10.47
C57	45.50	268° 19' 39"	213.88	45.89
C58	25.50	73° 44' 20"	35.49	21.30
C59	15.50	78° 28' 44"	20.42	12.00
C60	69.99	33° 51' 11"	41.35	21.30
C61	45.50	33° 52' 41"	29.29	15.17

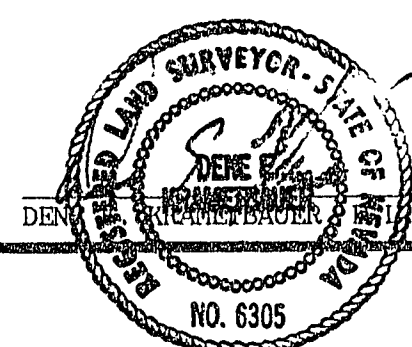
LINE DATA TABLE

LABEL	BEARING	DISTANCE
T1	S 51° 12' 42" W	66.70
T2	S 51° 12' 42" W	63.48
T3	S 38° 47' 18" E	26.15
T4	S 00° 59' 23" W	89.94
T5	S 89° 00' 37" W	20.50
T6	S 89° 00' 37" E	42.73
T7	S 00° 59' 23" W	103.00
T8	S 38° 47' 18" W	50.73
T9	S 19° 28' 24" W	54.53
T10	S 54° 18' 20" W	19.69
T11	S 51° 37' 21" W	21.06
T12	S 38° 47' 18" E	4.19
T13	S 81° 12' 05" W	6.60
T14	S 51° 12' 42" N	15.48
T15	S 81° 12' 05" E	30.63
T16	N 51° 37' 21" E	14.27
T17	N 51° 37' 21" E	25.03
T18	N 51° 37' 21" E	36.31
T19	N 85° 38' 33" E	15.70
T20	N 61° 12' 05" E	15.55
T21	S 28° 28' 24" W	30.83
T22	N 85° 38' 33" E	6.86
T23	N 19° 28' 24" E	31.06
T24	S 19° 28' 24" W	29.70
T25	N 45° 59' 20" E	29.88
T26	N 40° 28' 18" E	69.98
T27	N 45° 59' 20" W	4.38
T28	S 00° 59' 23" W	25.59

### BASIS OF BEARING

THE BASIS OF BEARING FOR THIS SURVEY IS THE SOUTH LINE OF THE SE 1/4 OF THE NW 1/4 OF SECTION 33, T. 19S., R. 60 E., M.D.M. WHICH BEARS SOUTH 88° 59' 47" EAST AS SHOWN BY MAP IN THE OFFICE OF THE CLARK COUNTY, NEVADA RECORDER IN BOOK 35 OF PLATS ON PAGE 53.

I, DENE E. KRAMTBAUER, A DULY REGISTERED LAND SURVEYOR IN THE STATE OF NEVADA, DO HEREBY CERTIFY THAT THE MONUMENTS HAVE BEEN SET AND THE LINES ESTABLISHED AS SHOWN HERON.



9/12/22