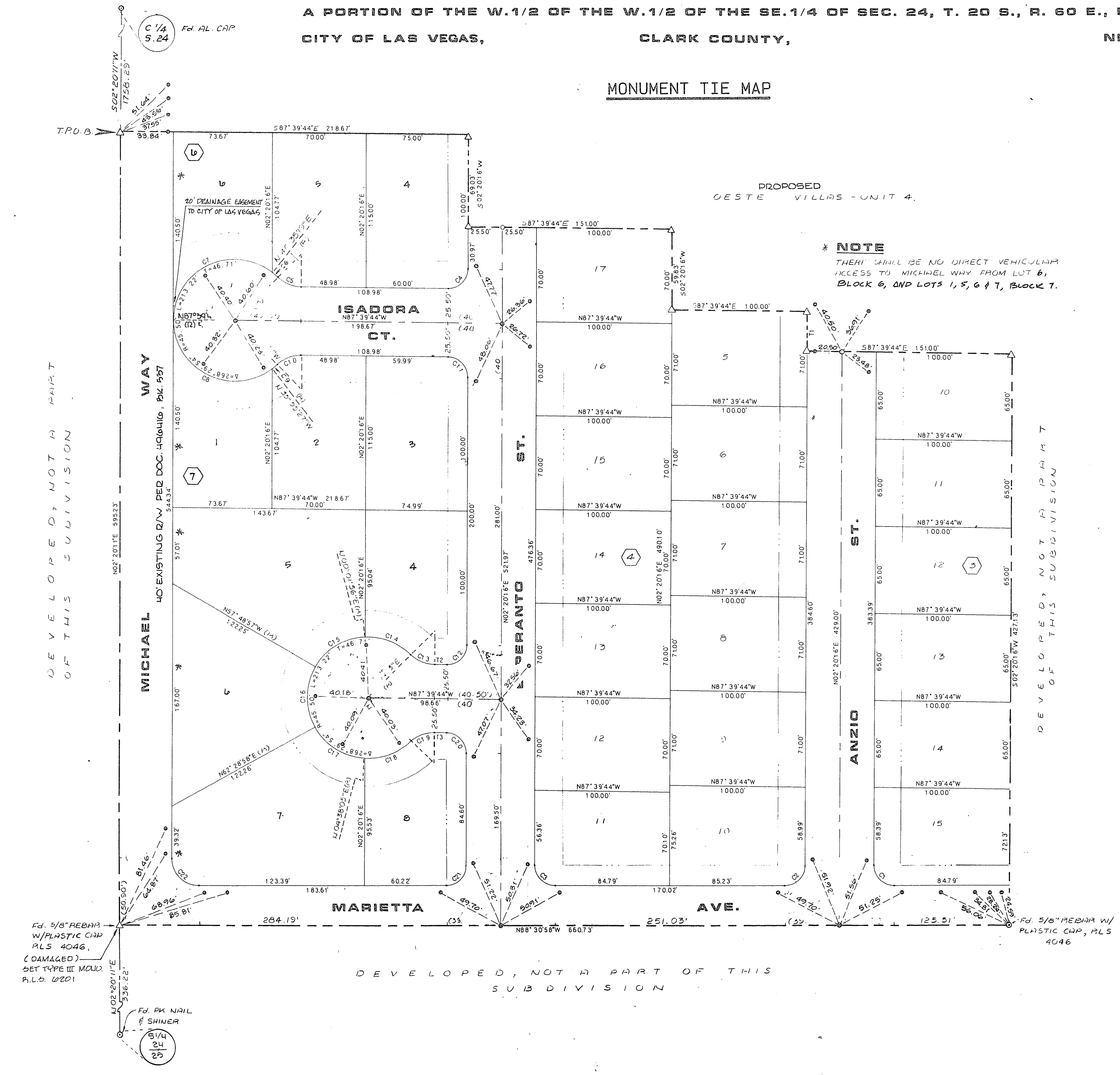


4-6-129

OESTE VILLAS - UNIT 5

A PORTION OF THE W. 1/2 OF THE W. 1/2 OF THE SE. 1/4 OF SEC. 24, T. 20 S., R. 60 E., M.D.M.,
CITY OF LAS VEGAS, CLARK COUNTY, NEVADA

MONUMENT TIE MAP



SURVEYOR'S CERTIFICATE

I, Gene D. Krametbauer, a Duly Registered Land Surveyor in the State of Nevada, do hereby certify that the monuments have been set and the tie distance established as shown hereon. This survey was completed on January 14, 1988.

Gene D. Krametbauer
Gene D. Krametbauer, R.L.S.
Nevada Certification No. 6201

1/15/88

*** NOTE**
THERE SHALL BE NO DIRECT VEHICULAR ACCESS TO MICHAEL WAY FROM LOT 6, BLOCK 6, AND LOTS 1, 5, 6 & 7, BLOCK 7.

LEGEND

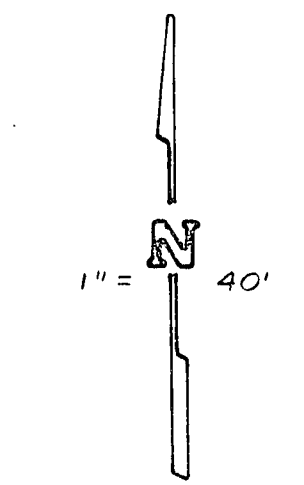
- ① Fd. POINT AS DESCRIBED
- △ Fd. 5/8" REBAR W/HL CAP, MLS 6201
- ▲ SET 5/8" REBAR W/HL CAP, MLS 6201 (TYPE III MONUMENT)
- Fd. 5/8" REBAR W/HL CAP & B/C REFERENCE TIES, MLS 6201
- 15 LOT NUMBER, TOTAL = 30
- ③ BLOCK NUMBER
- C-0 CURVE NUMBER
- T-1 LINE NUMBER
- (M) MANHOLE
- BUILDING, SETBACK LINE, 20' FRONT, 15' CORNER
- SET 5/8" REBAR W/HL CAP & B/C REFERENCE TIES, MLS 6201

CURVE DATA

NO.	DELTA	RADIUS	LENGTH	TAN
C1	90°51'14"	15.00	23.78	15.23
C2	89°08'46"	15.00	23.34	14.78
C3	90°51'14"	15.00	23.79	15.23
C4	90°00'00"	15.00	23.56	15.00
C5	44°14'57"	25.00	19.31	10.16
C6	5°59'54"	45.50	4.76	2.38
C7	128°15'08"	45.50	101.85	93.81
C8	128°15'38"	45.50	101.85	93.83
C9	5°59'54"	45.50	4.75	2.38
C10	44°14'57"	25.00	19.31	10.16
C11	90°00'00"	15.00	23.56	15.00
C12	90°00'00"	15.00	23.56	15.00
C13	44°14'57"	25.00	19.31	10.16
C14	46°33'17"	45.50	36.97	19.57
C15	57°50'53"	45.50	45.94	25.14
C16	59°42'05"	45.50	47.41	26.11
C17	57°50'53"	45.50	45.94	25.14
C18	46°32'46"	45.50	36.96	19.57
C19	44°14'57"	25.00	19.31	10.16
C20	90°00'00"	15.00	23.56	15.00
C21	89°08'46"	15.00	23.34	14.78
C22	90°51'09"	20.00	31.71	20.30

LINE DATA

NO.	BEARING	DISTANCE
T1	S02°20'16"W	29.40
T2	N87°39'44"W	8.97
T3	N87°39'44"W	8.97



DEVELOPED, NOT A PART OF THIS SUBDIVISION

DEVELOPED, NOT A PART OF THIS SUBDIVISION

DEVELOPED, NOT A PART OF THIS SUBDIVISION