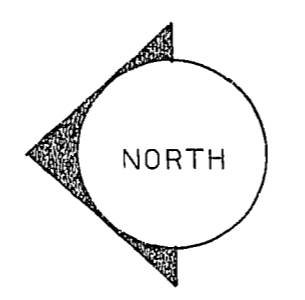
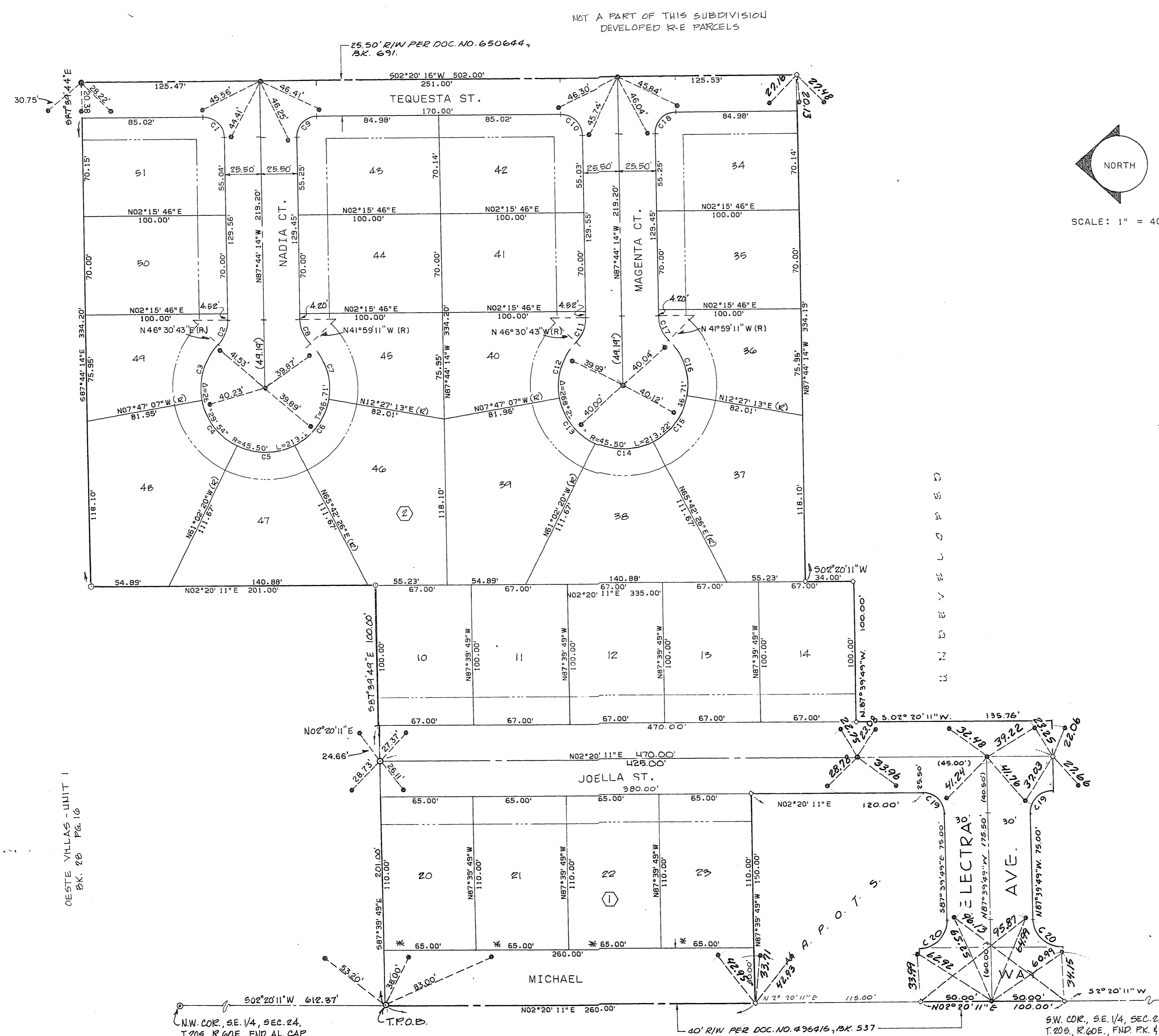


OESTE VILLAS - UNIT 2

BEING A PORTION OF THE W 1/2 OF THE W 1/2 OF THE SE 1/4
OF SEC. 24, T.20 S., R. 60 E., M.D.M.,
CITY OF LAS VEGAS, CLARK COUNTY, NEVADA.

MONUMENT TIE MAP



SCALE: 1" = 40'

LEGEND

- 46 LOT NUMBER / TOTAL LOTS = 27
- (2) BLOCK NUMBER
- C6 CURVE NUMBER
- BUILDING SETBACK LINE
20' FRONT / 15' SIDE
- FOUND AS SET BY OESTE VILLAS-UNIT 1, BK 28, PG. 16, UNLESS OTHERWISE SHOWN
- SET 5/8" REBAR W/AL. CAP W/B.C. REFERENCES, R.L.S. 4046
- SET BRASS CAP IN TOP OF CURB
- ◇ SET REBAR W/AL. CAP, R.L.S. 4046
- * NOTE: DIRECT VEHICULAR ACCESS TO MICHAEL WAY FROM THE REAR OF LOTS 20 THROUGH 23, BLOCK 1 IS PROHIBITED.

SURVEYORS CERTIFICATE

I, JERRY E. BARNSON, A REGISTERED LAND SURVEYOR,
DO HEREBY CERTIFY THAT THE MONUMENTS HAVE BEEN
SET AND THE REFERENCE TIES ESTABLISHED AS SHOWN HEREON.

Jerry E. Barnson 9/29/83
DATE

NO	DELTA	RADIUS	LENGTH	TAN
C1	89°55'30"	15.00	23.54	14.98
C2	44°14'57"	29.00	19.31	10.16
C3	54°17'50"	45.50	43.12	23.33
C4	53°15'13"	45.50	42.29	22.81
C5	53°15'14"	45.50	42.29	22.81
C6	53°15'13"	45.50	42.29	22.81
C7	54°26'24"	45.50	43.23	23.40
C8	44°14'57"	29.00	19.31	10.16
C9	90°04'30"	15.00	23.58	15.02
C10	89°55'30"	15.00	23.54	14.98
C11	44°14'57"	29.00	19.31	10.16
C12	54°17'50"	45.50	43.12	23.33
C13	53°15'13"	45.50	42.29	22.81
C14	53°15'14"	45.50	42.29	22.81
C15	53°15'13"	45.50	42.29	22.81
C16	54°26'24"	45.50	43.23	23.40
C17	44°14'57"	29.00	19.31	10.16
C18	90°04'30"	15.00	23.58	15.02
C19	90°00'00"	15.00	23.56	15.00
C20	90°00'00"	20.00	31.42	20.00

OESTE VILLAS - UNIT 1
BK. 28 PG. 16

U
N
I
T
E
D
S
T
A
T
E
S
O
F
A
M
E
R
I
C
A

N.W. COR., SE. 1/4, SEC. 24,
T. 20S., R. 60E., FND. AL. CAP

DEVELOPED
R-E
PARCELS
NOT A PART OF THIS SUBDIVISION

S.W. COR., SE. 1/4, SEC. 24,
T. 20S., R. 60E., FND. PK. 4 SH.

OESTE VILLAS - 2 TIE MAP

Oeste Villas 2