

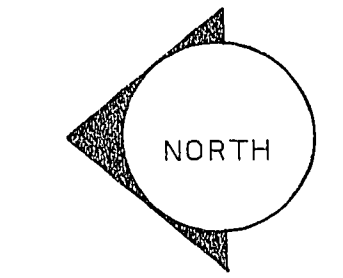
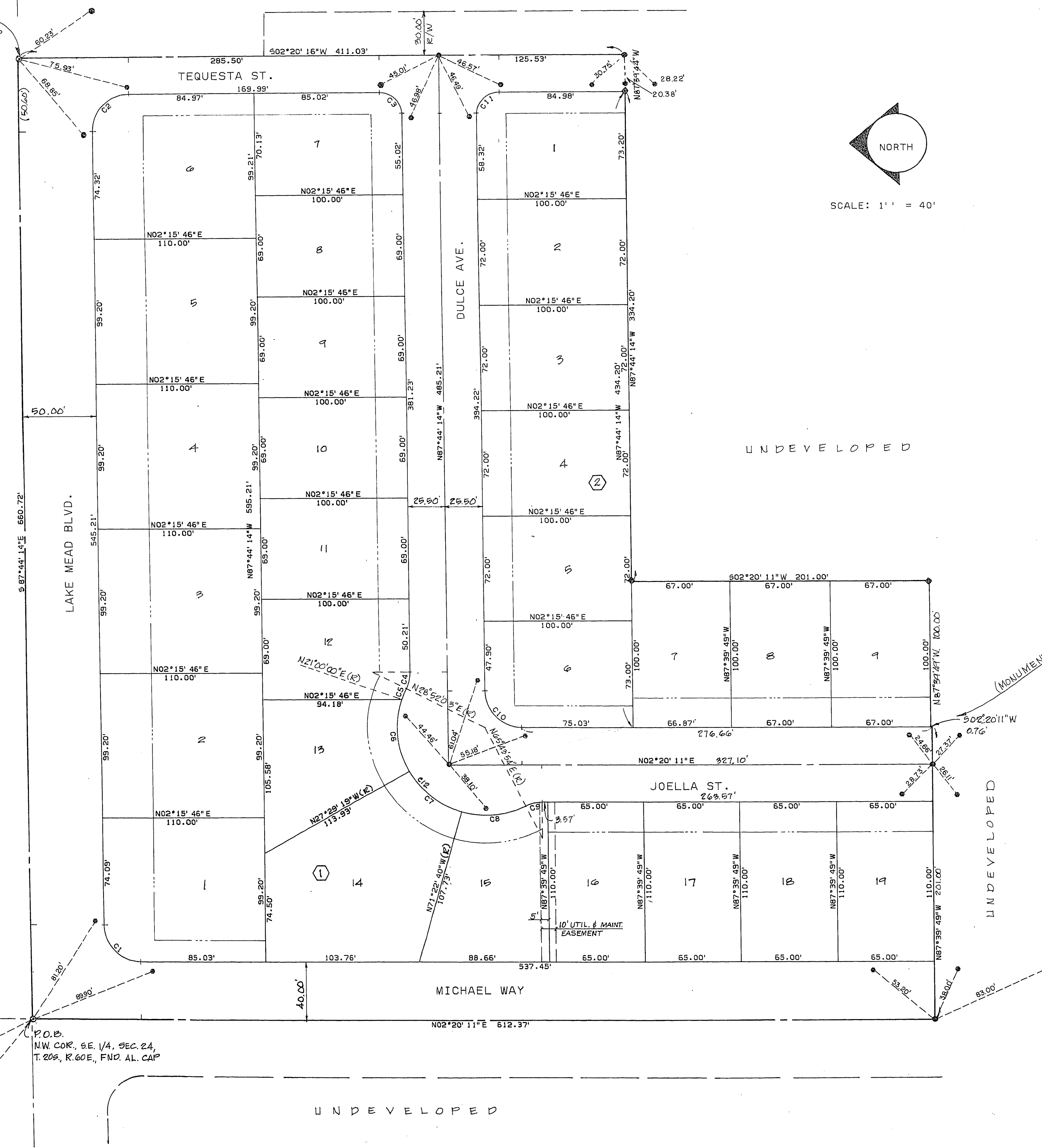
OESTE VILLAS - UNIT 1

BEING A PORTION OF THE W 1/2 OF THE W 1/2 OF THE SE 1/4
OF SEC. 24, T. 20 S., R. 60 E., M.D.M.
CITY OF LAS VEGAS, CLARK COUNTY, NEVADA.

MONUMENT TIE MAP

N.E. COR. W1/2 W.1/2 SE.1/4
FND. 5/8" REBAR W/PLASTIC CAP
RESET W/5/8" REBAR
W/AL. CAP. R.L.S. 4046

CURTIS PARK MAJOR - UNIT No. 3, BK. 5 PG. 75



SCALE: 1" = 40'

LEGEND

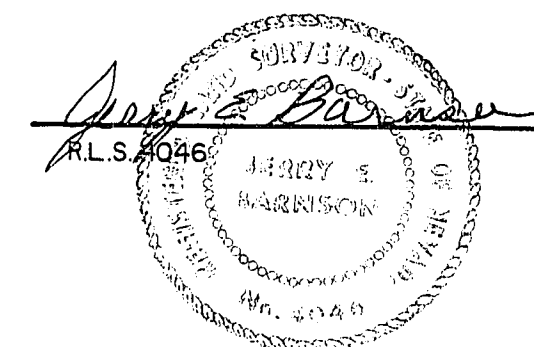
- 14 LOT NUMBER / TOTAL LOTS = 28
 - (1) BLOCK NUMBER
 - C7 CURVE NUMBER
 - BUILDING SETBACK LINE
20' FRONT, EXCEPT LAKE MEAD BLVD = 35'
15' SIDE
 - FOUND AS INDICATED
 - SET 5/8" REBAR W/AL. CAP W/BC REFERENCES, R.L.S. 4046
 - SET BRASS CAP IN TOP OF CURB
 - ◆ SET 5/8" REBAR W/AL. CAP, R.L.S. 4046
- NOTE: VEHICULAR ACCESS TO MICHAEL WAY FROM THE REAR OF LOTS 14 THRU 19, BLOCK 1 IS PROHIBITED.

CURVE DATA

NO	DELTA	RADIUS	LENGTH	TAN
C1	89°59'35"	25.00	39.24	24.97
C2	90°04'30"	25.00	39.30	25.03
C3	89°59'30"	15.00	23.54	14.98
C4	26°36'17"	25.00	11.61	5.91
C5	7°52'03"	60.00	8.24	4.13
C6	48°29'19"	60.00	50.78	27.02
C7	43°53'21"	60.00	45.96	24.17
C8	42°53'26"	60.00	44.91	23.57
C9	26°38'17"	25.00	11.61	5.91
C10	89°59'35"	25.00	39.24	24.97
C11	90°04'30"	15.00	23.58	15.02
C12	14°2'08"04"	60.00	144.89	180.03

SURVEYORS CERTIFICATE

I, JERRY E. BARNSON, A REGISTERED LAND SURVEYOR,
DO HEREBY CERTIFY THAT THE MONUMENTS HAVE BEEN
SET AND THE REFERENCE TIES ESTABLISHED AS SHOWN HEREON.



9/29/83
JTB